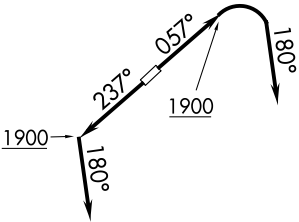


| DEPARTURE ROUTE DESCRIPTION   |
|---|
| <p><u>TAKEOFF RUNWAY 6:</u> Climb on heading 056° to 1900, then right turn on heading 180° or as assigned by ATC for RADAR vectors to cross AHMET at or above 3000, thence....</p> <p><u>TAKEOFF RUNWAY 24:</u> Climb on heading 236° to 1900, then on heading 180° or as assigned by ATC for RADAR vectors to cross AHMET at or above 3000, thence....</p> <p>....on track 169° to cross KKIDS at or below 14000, then on (transition).<br/>Maintain altitude assigned by ATC, expect filed altitude ten minutes after departure.</p> <p><u>ELLWOOD CITY TRANSITION (AHMET4.EWC)</u></p> <p><u>NUSMM TRANSITION (AHMET4.NUSMM)</u></p> |

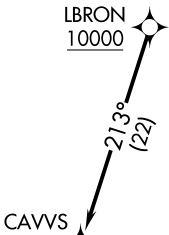
D-ATIS  
119.95  
CLNC DEL  
121.85 (when tower closed)  
GND CON  
121.85  
COUNTY TOWER ★  
118.5 (CTAF)  
CLEVELAND DEP CON  
125.35 346.325

TOP ALTITUDE:  
ASSIGNED BY ATC



NOTE: RADAR required.  
NOTE: RNAV 1.  
NOTE: DME/DME/IRU or GPS required.

TAKEOFF MINIMUMS:  
Rwys 6, 24: Standard with a minimum climb  
of 500' per NM to 1400.



NOTE: Chart not to scale.



DEPARTURE ROUTE DESCRIPTION

TAKEOFF RUNWAY 6: Climb on heading 057° to 1900, then right turn heading 180° or as assigned by ATC for RADAR vectors to cross LBRON at or above 10000, thence....  
TAKEOFF RUNWAY 24: Climb on heading 237° to 1900, then on heading 180° or as assigned by ATC for RADAR vectors to cross LBRON at or above 10000, thence....

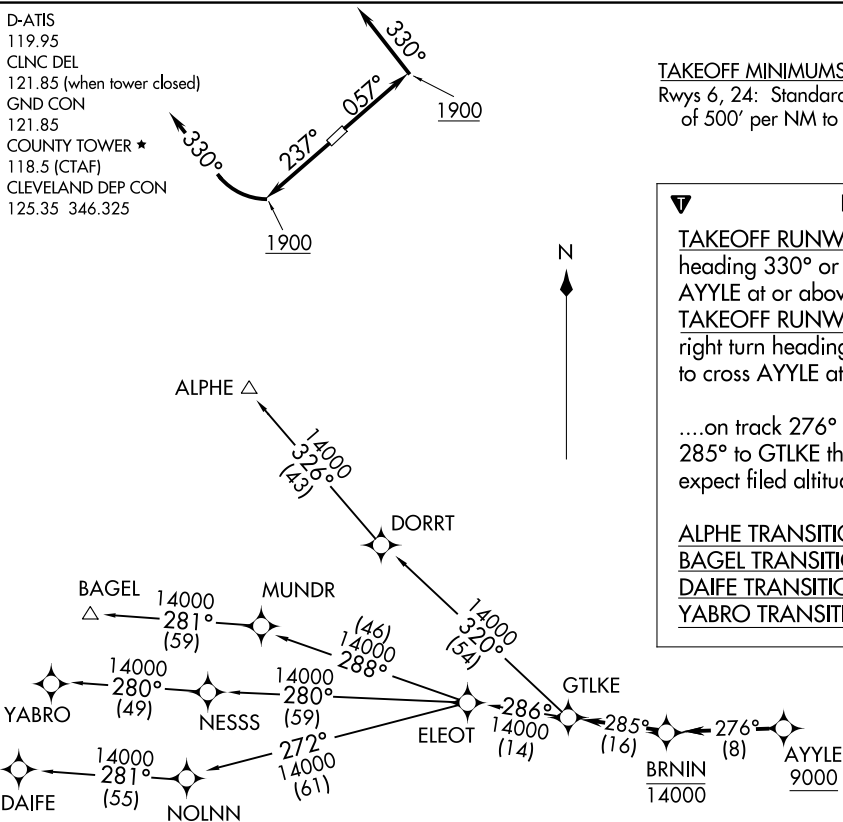
....on track 213° to CAVVS, then on (transition).  
Maintain altitude assigned by ATC, expect  
filed altitude ten minutes after departure.

APPLETON TRANSITION (CAVVS4.APE)

GTLKE FOUR DEPARTURE (RNAV)  
(GTLKE4.GTLKE) 26MAR20

CUYAHOGA COUNTY (CGF)  
CLEVELAND, OHIO

D-ATIS  
119.95  
CLNC DEL  
121.85 (when tower closed)  
GND CON  
121.85  
COUNTY TOWER ★  
118.5 (CTAF)  
CLEVELAND DEP CON  
125.35 346.325



NOTE: Chart not to scale.

#### TAKEOFF MINIMUMS:

Rwys 6, 24: Standard with a minimum climb of 500' per NM to 1400.

#### DEPARTURE ROUTE DESCRIPTION

**TAKEOFF RUNWAY 6:** Climb on heading 057° to 1900, then on heading 330° or as assigned by ATC for RADAR vectors to cross AYYLE at or above 9000, thence....

**TAKEOFF RUNWAY 24:** Climb on heading 237° to 1900, then right turn heading 330° or as assigned by ATC for RADAR vectors to cross AYYLE at or above 9000, thence....

....on track 276° to cross BRNIN at or below 14000, then on track 285° to GTLKE then on (transition). Maintain ATC assigned altitude, expect filed altitude 10 minutes after departure.

ALPHE TRANSITION (GTLKE4.ALPHE)

BAGEL TRANSITION (GTLKE4.BAGEL)

DAIFE TRANSITION (GTLKE4.DAIFE)

YABRO TRANSITION (GTLKE4.YABRO)

NOTE: RADAR required.

NOTE: RNAV 1.

NOTE: DME/DME/IRU or GPS required.

NOTE: BAGEL TRANSITION: For aircraft landing MDW only, or as assigned by ATC.

NOTE: DAIFE TRANSITION: For aircraft landing ORD only, or as assigned by ATC.

(GTLKE4.GTLKE) 23278  
GTLKE FOUR DEPARTURE (RNAV)

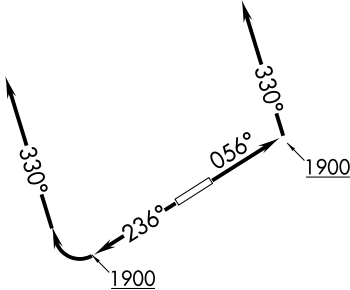
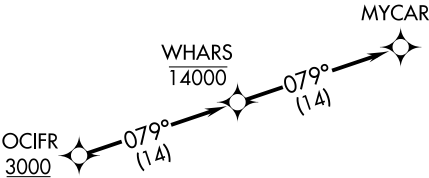
AL-5027 (FAA)

CUYAHOGA COUNTY (CGF)  
CLEVELAND, OHIO

D-ATIS  
119.95  
CLNC DEL  
121.85 (when tower closed)  
GND CON  
121.85  
COUNTY TOWER ★  
118.5 (CTAF)  
CLEVELAND DEP CON  
125.35 346.325

TOP ALTITUDE:  
ASSIGNED BY ATC

NOTE: RNAV 1.  
NOTE: RADAR required.  
NOTE: DME/DME/IRU or GPS required.



TAKEOFF MINIMUMS:  
Rwys 6, 24: Standard  
with minimum climb of  
500' per NM to 1400.

NOTE: Chart not to scale.



DEPARTURE ROUTE DESCRIPTION

TAKEOFF RUNWAY 6: Climb on heading 056° to 1900, then on heading 330° or as assigned by ATC for RADAR vectors to cross OCIFR at or above 3000, thence....  
TAKEOFF RUNWAY 24: Climb on heading 236° to 1900, then right turn on heading 330° or as assigned by ATC for RADAR vectors to cross OCIFR at or above 3000, thence....  
....on track 079° to cross WHARS at or below 14000, then on track 079° to MYCAR.  
Maintain altitude assigned by ATC, expect filed altitude ten minutes after departure.

ZAAPA FIVE DEPARTURE (RNAV)  
(ZAAPAS.ZAAPA) 26MAR20

CLEVELAND, OHIO  
CUYAHOGA COUNTY (CGF)

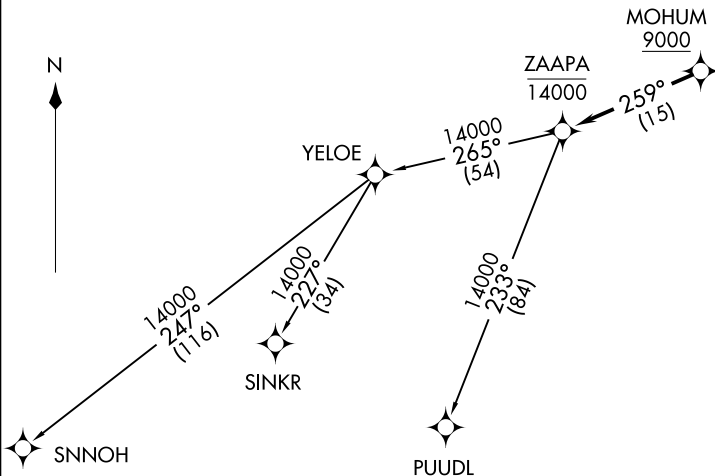
D-ATIS  
119.95  
CLNC DEL  
121.85 (when tower closed)  
GND CON  
121.85  
COUNTY TOWER ★  
118.5 (CTAF)  
CLEVELAND DEP CON  
125.35 346.325

**TOP ALTITUDE:  
ASSIGNED BY ATC**

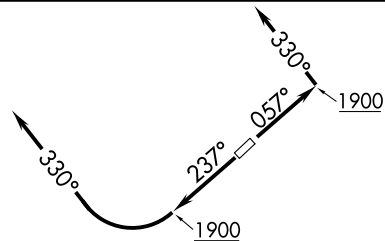
**TAKEOFF MINIMUMS:**

Rwys 6, 24: Standard with a minimum climb  
of 500' per NM to 1400.

- NOTE: RADAR required.  
NOTE: RNAV 1.  
NOTE: DME/DME/IRU or GPS required.  
NOTE: PUUDL TRANSITION: For aircraft at or  
below FL220 only or as assigned by ATC.



NOTE: Chart not to scale.



**DEPARTURE ROUTE DESCRIPTION**

**TAKEOFF RUNWAY 6:** Climb on heading 057° to 1900, then on heading 330° or as assigned by ATC for RADAR vectors to cross MOHUM at or above 9000, thence....  
**TAKEOFF RUNWAY 24:** Climb on heading 237° to 1900, then right turn heading 330° or as assigned by ATC for RADAR vectors to cross MOHUM at or above 9000, thence....

....on track 259° to cross ZAAPA at or below 14000, then on (transition). Maintain ATC assigned altitude, expect filed altitude ten minutes after departure.

PUUDL TRANSITION (ZAAPAS.PUUDL)  
SINKR TRANSITION (ZAAPAS.SINKR)  
SNNOH TRANSITION (ZAAPAS.SNNOH)

(ZAAPAS.ZAAPA) 23278  
AL-5027 (FAA)

CUYAHOGA COUNTY (CGF)  
CLEVELAND, OHIO