

WAAS CH <b>93637</b> <b>W12A</b>	APP CRS <b>119°</b>	Rwy Idg TDZE Apt Elev	<b>3300</b> <b>813</b> <b>813</b>
--	------------------------	-----------------------------	---

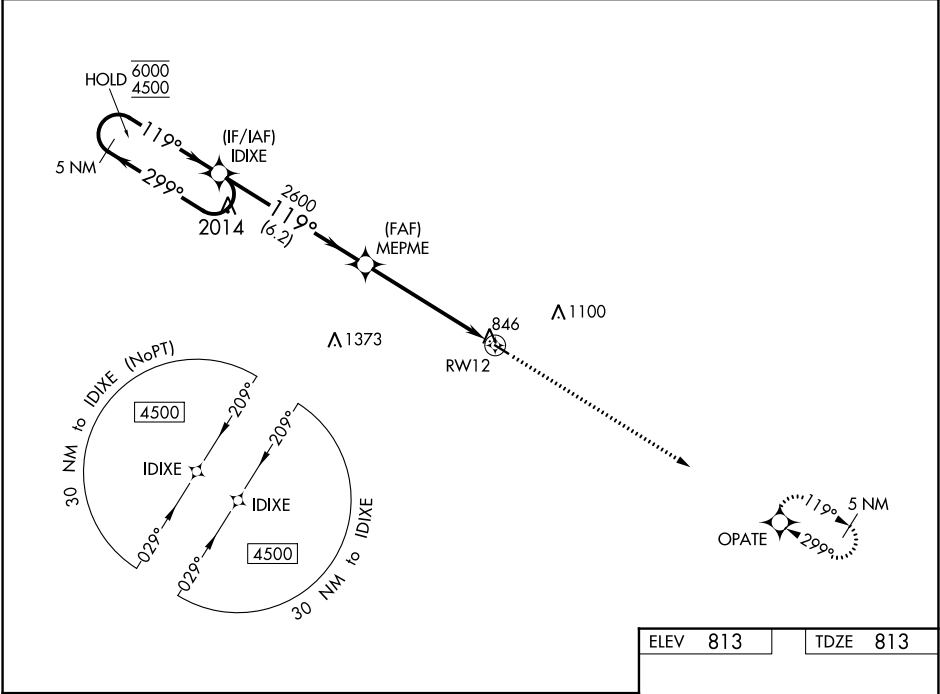
# RNAV (GPS) RWY 12

MEMPHIS MEML (Ø3D)

RNP APCH.  
 ▼ Rwy 12 helicopter visibility reduction below ¾ SM NA.  
 ▲ NA Baro-VNAV NA. Use Kirksville altimeter setting.

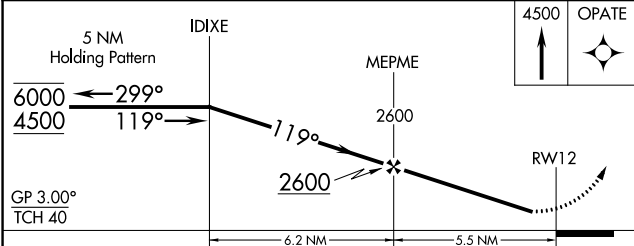
MISSED APPROACH: Climb to 4500 direct OPATE and hold, continue climb-in-hold to 4500.

IRK ASOS <b>121.125</b>	KANSAS CITY CENTER <b>126.225 317.775</b>	CTAF <b>122.90</b>
----------------------------	--	-----------------------

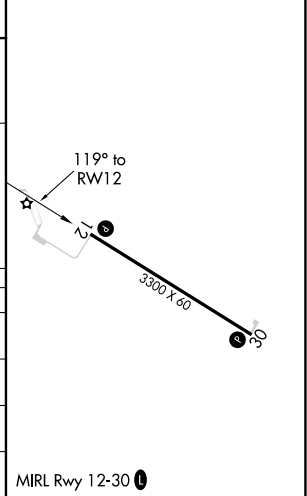


NC-3, 22 FEB 2024 to 21 MAR 2024

NC-3, 22 FEB 2024 to 21 MAR 2024



ELEV 813	TDZE 813
----------	----------



CATEGORY	A	B	C	D
LPV DA	1144-1 331 (400-1)			NA
LNAV/VNAV DA	1144-1 331 (400-1)			NA
LNAV MDA	1360-1	547 (600-1)	1360-1 5/8 547 (600-1 3/8)	NA
CIRCLING	1360-1	547 (600-1)	1500-2 687 (700-2)	NA

MIRL Rwy 12-30

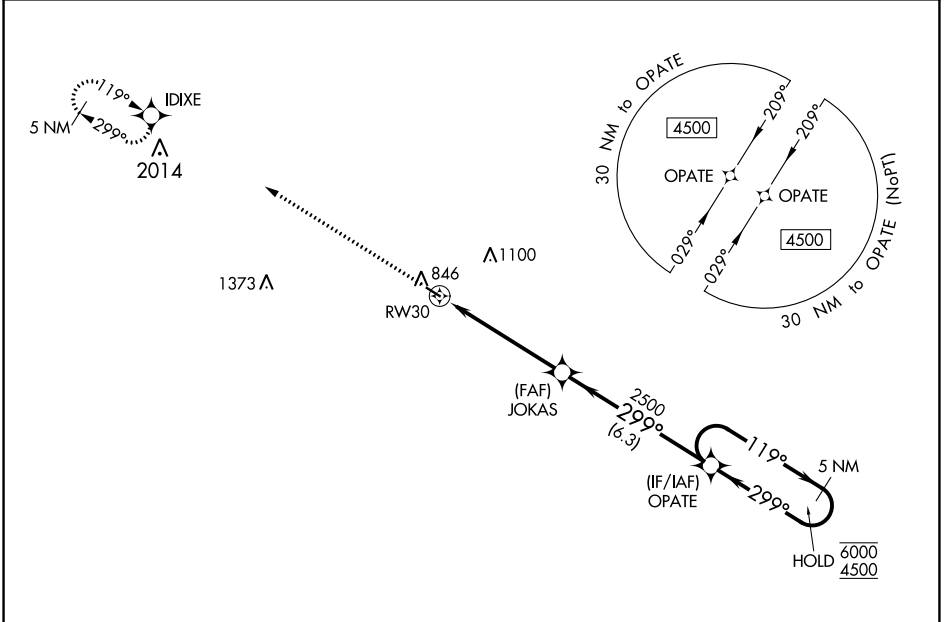
WAAS CH <b>86437</b> <b>W30A</b>	APP CRS <b>299°</b>	Rwy Idg <b>3300</b> TDZE <b>813</b> Apt Elev <b>813</b>
--	------------------------	---

# RNAV (GPS) RWY 30

MEMPHIS MEML (Ø3D)

RNP APCH.	MISSED APPROACH: Climb to 4500 direct IDIXE and hold, continue climb-in-hold to 4500.
<p>▼ Rwy 30 helicopter visibility reduction below ¼ SM NA.</p> <p>▲ NA Baro-VNAV NA. Use Kirksville altimeter setting.</p>	

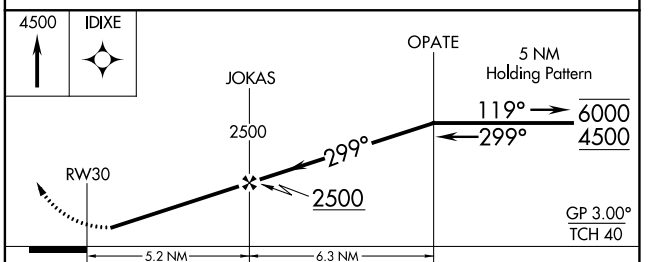
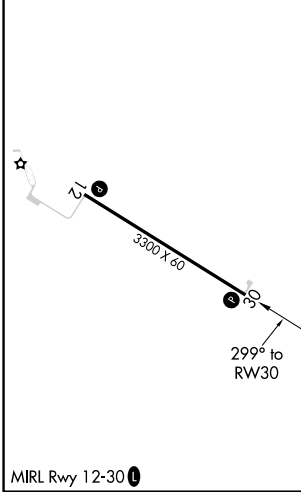
IRK ASOS <b>121.125</b>	KANSAS CITY CENTER <b>126.225 317.775</b>	CTAF <b>122.9</b>
----------------------------	--	----------------------



NC-3, 22 FEB 2024 to 21 MAR 2024

NC-3, 22 FEB 2024 to 21 MAR 2024

ELEV <b>813</b>	TDZE <b>813</b>
-----------------	-----------------



CATEGORY	A	B	C	D
LPV DA	1144-1 331 (400-1)			NA
LNAV/VNAV DA	1144-1 331 (400-1)			NA
LNAV MDA	1340-1	527 (600-1)	1340-1½ 527 (600-1½)	NA
<b>C</b> CIRCLING	1340-1	527 (600-1)	1500-2 687 (700-2)	NA