

APP CRS	Rwy Idg	<b>3779</b>
<b>263°</b>	TDZE	<b>632</b>
	Apt Elev	<b>634</b>

# RNAV (GPS) RWY 26

GRIFFITH-MERRILLVILLE (Ø5C)

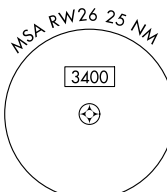
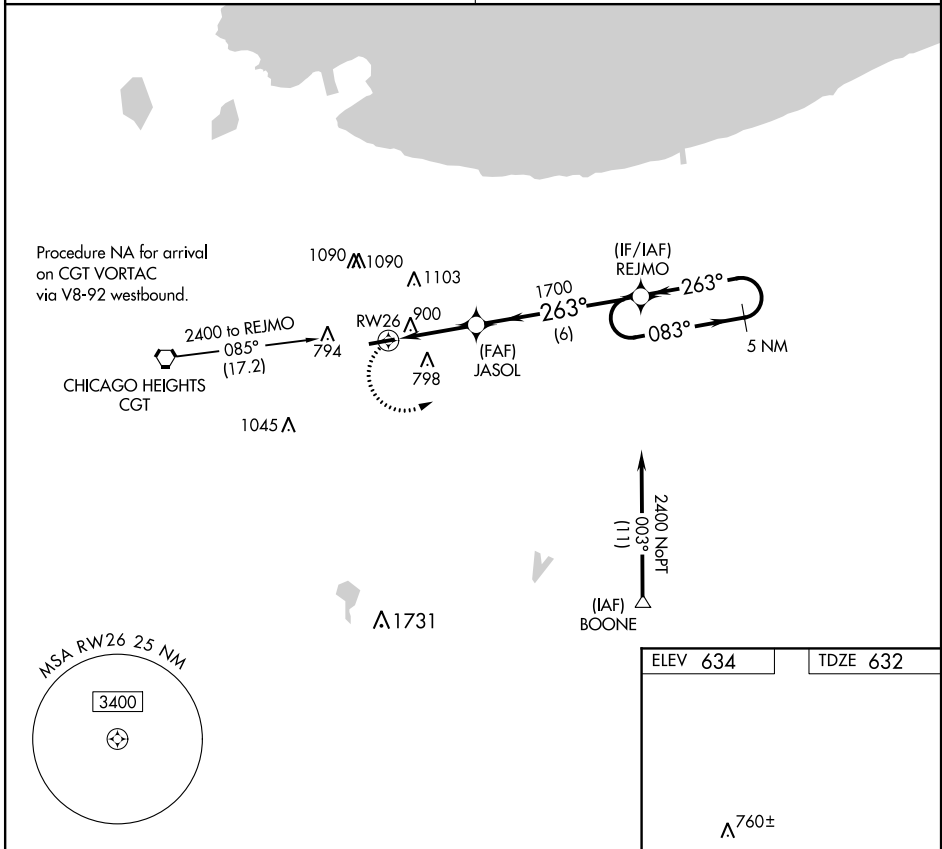
RNP APCH

▼ Obtain local altimeter setting on CTAF; when not received use Chicago Midway  
 ▲ NA Init altimeter setting and increase all MDAs 60 feet. Visibility reduction by  
 helicopters NA. Procedure NA at night.

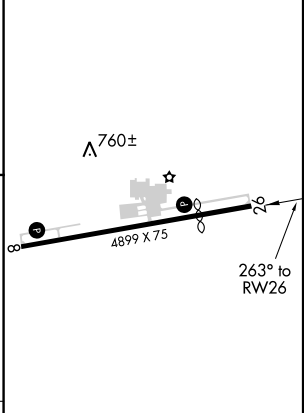
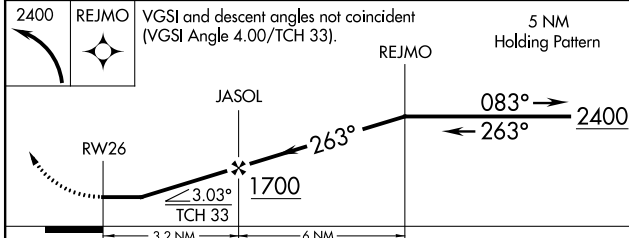
MISSED APPROACH: Climbing left  
 turn to 2400 direct REJMO and hold.

CHICAGO APP CON  
**133.1 285.6**

UNICOM  
**123.0 (CTAF) 0**



ELEV 634	TDZE 632
----------	----------



CATEGORY	A	B	C	D
LNNAV MDA	1160-1	528 (600-1)		NA
<b>C</b> CIRCLING	1200-1	566 (600-1)		NA

REL Rwy 8 and 26 0  
 MRL Rwy 8-26 0

EC-2, 17 JUN 2021 to 15 JUL 2021

EC-2, 17 JUN 2021 to 15 JUL 2021

APP CRS	Rwy Idg	<b>4899</b>
<b>083°</b>	TDZE	<b>634</b>
	Apt Elev	<b>634</b>

# RNAV (GPS) RWY 8

GRIFFITH-MERRILLVILLE (Ø5C)

RNP APCH

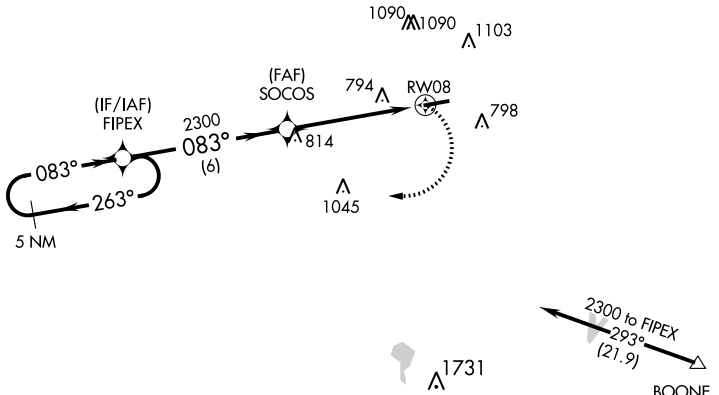
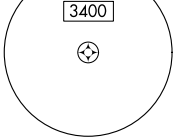
▼ Obtain local altimeter setting on CTAF; when not received use Chicago Midway  
 ▲ NA Init altimeter setting and increase all MDAs 60 feet. Visibility reduction by helicopters NA. Procedure NA at night.

MISSED APPROACH: Climbing right turn to 2300 direct FIPEX and hold.

CHICAGO APP CON  
**133.1 285.6**

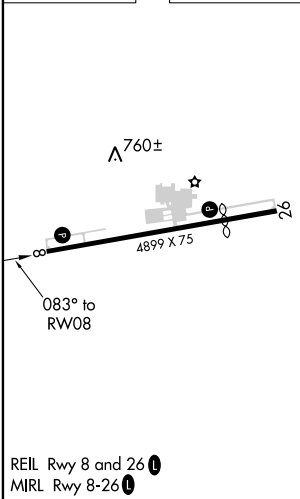
UNICOM  
**123.0 (CTAF) 1**

MSA RW08 25 NM



Procedure NA for arrivals at BOONE via V422 southeastbound.

ELEV 634      TDZE 634



REIL Rwy 8 and 26 1  
 MIRL Rwy 8-26 1

5 NM Holding Pattern	VGSi and descent angles not coincident (VGSi Angle 3.50/TCH 44).		2300	FIPEX
	FIPEX	SOCOS		
2300	← 263°	→ 083°	2300	083°
			3.04°	TCH 41
		6 NM	5 NM	
CATEGORY	A	B	C	D
LNAV MDA	1080-1	446 (500-1)		NA
<input checked="" type="checkbox"/> CIRCLING	1200-1	566 (600-1)		NA

EC-2, 17 JUN 2021 to 15 JUL 2021

EC-2, 17 JUN 2021 to 15 JUL 2021

VORTAC CGT <b>114.2</b> Chan <b>89</b>	APP CRS <b>084°</b>	Rwy Idg TDZE <b>634</b> Apt Elev <b>634</b>	<b>4899</b> <b>634</b> <b>634</b>
--	------------------------	---	---

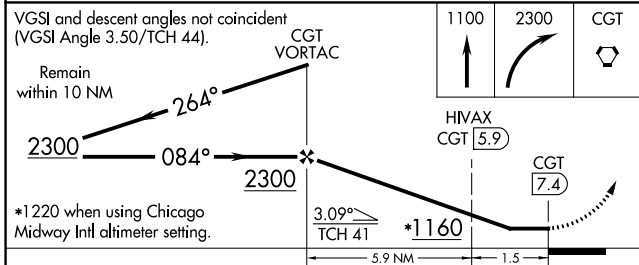
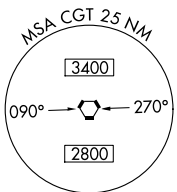
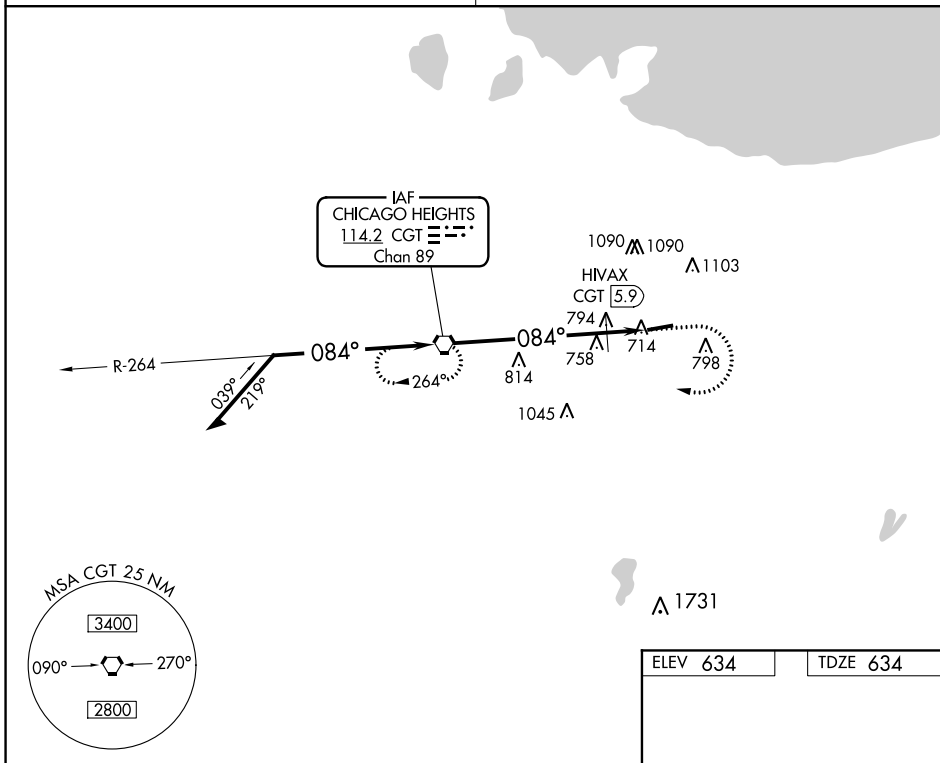
**VOR RWY 8**  
GRIFFITH-MERRILLVILLE (05C)

**NA** Obtain local altimeter setting on CTAF; when not received, use Chicago Midway Intl altimeter setting and increase all MDAs 60 feet. Visibility reduction by helicopters NA. Procedure NA at night.

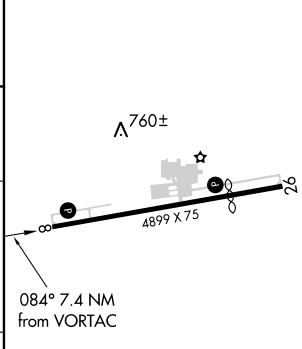
**MISSED APPROACH:** Climb to 1100 then climbing right turn to 2300 direct CGT VORTAC and hold.

CHICAGO APP CON  
**133.1 285.6**

UNICOM  
**123.0 (CTAF) 0**



ELEV 634	TDZE 634
----------	----------



CATEGORY	A	B	C	D
S-8	1160-1	526 (600-1)		NA
CIRCLING	1200-1	566 (600-1)		NA
HIVAX FIX MINIMUMS				
S-8	1060-1	426 (500-1)		NA
CIRCLING	1200-1	566 (600-1)		NA

REIL Rwy 8 and 26	0
MIRL Rwy 8-26	0
FAF to MAP 7.4 NM	
Knots	60 90 120 150 180
Min:Sec	7:24 4:56 3:42 2:58 2:28

EC-2, 17 JUN 2021 to 15 JUL 2021

EC-2, 17 JUN 2021 to 15 JUL 2021