

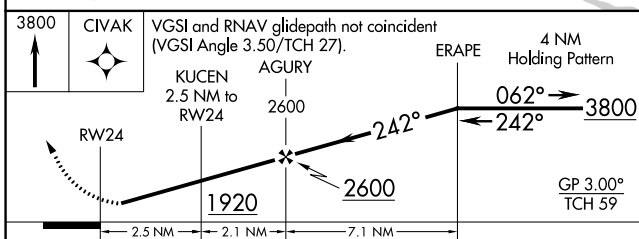
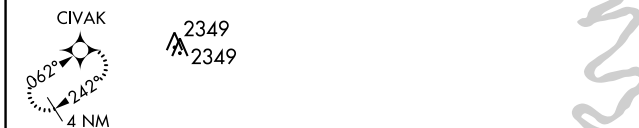
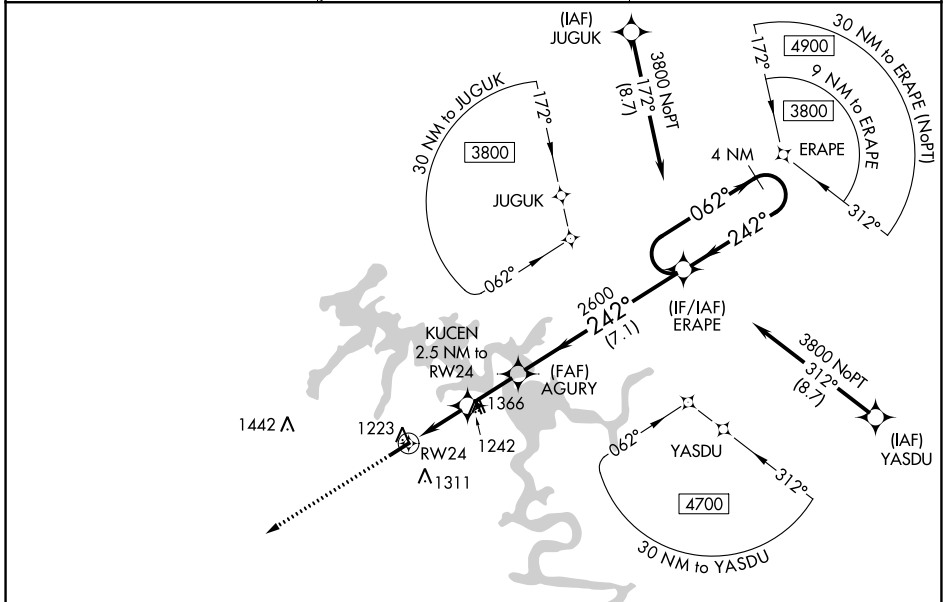
WAAS CH <b>93527</b> <b>W24A</b>	APP CRS <b>242°</b>	Rwy Idg TDZE <b>1084</b> Apt Elev <b>1084</b>
--	------------------------	---

# RNAV (GPS) RWY 24

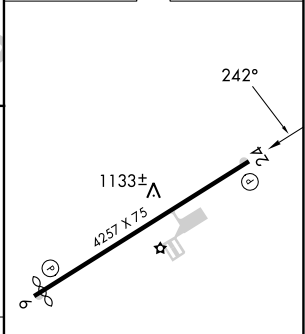
SMITHVILLE MUNI (ØA.3)

RNP APCH.	Baro-VNAV NA. Procedure NA at night. Rwy 24 helicopter visibility reduction below 1 SM NA. Use Sparta altimeter setting, when not received, use Tullahoma altimeter setting and increase LPV DA to 1455 feet; increase LNAV/VNAV DA to 1471 feet and all visibilities 1/8 SM, increase all MDA 60 feet and LNAV visibility Cat C 1/8 SM.	MISSED APPROACH: Climb to 3800 direct CIVAK and hold.
-----------	--	---

SRB AWOS-3 <b>128.25</b>	MEMPHIS CENTER <b>132.9 290.3</b>	UNICOM <b>122.8</b> (CTAF)
-----------------------------	--------------------------------------	-------------------------------



ELEV 1084	TDZE 1084
-----------	-----------



CATEGORY	A	B	C	D
LPV DA	1402-1	318 (400-1)		NA
LNAV/VNAV DA	1418-1	334 (400-1)		NA
LNAV MDA	1520-1	436 (500-1)	1520-1¼ 436 (500-1¼)	NA

MIRL Rwy 6-24  
REIL Rwy 6 and 24

SE-1, 22 FEB 2024 to 21 MAR 2024

SE-1, 22 FEB 2024 to 21 MAR 2024

WAAS CH <b>82433</b> <b>W06A</b>	APP CRS <b>062°</b>	Rwy ldg <b>4106</b> TDZE <b>1079</b> Apt Elev <b>1084</b>
--	------------------------	---

# RNAV (GPS) RWY 6

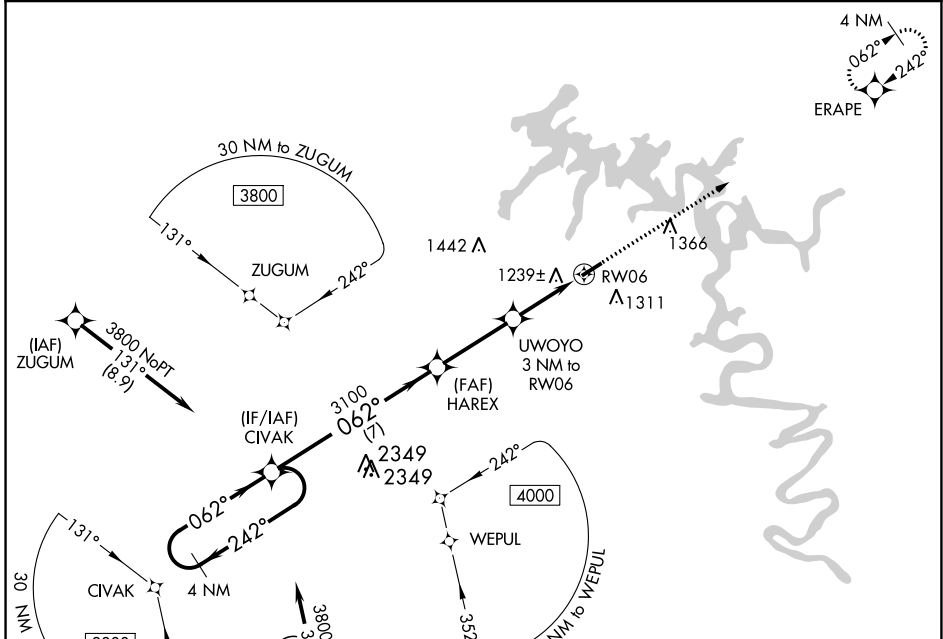
SMITHVILLE MUNI (ØA3)

RNP APCH.

Baro-VNAV NA. Procedure NA at night. Rwy 6 helicopter visibility reduction below 1 SM NA. Use Sparta altimeter setting; when not received, use Tullahoma altimeter setting and increase LPV DA to 1486 feet and all visibilities  $\frac{1}{8}$  SM, increase LNAV/VNAV DA to 1645 feet and all visibilities  $\frac{1}{4}$  SM, increase all MDA 60 feet and LNAV visibility Cat C  $\frac{1}{4}$  SM.

MISSED APPROACH: Climb to 3800 direct ERAPE and hold.

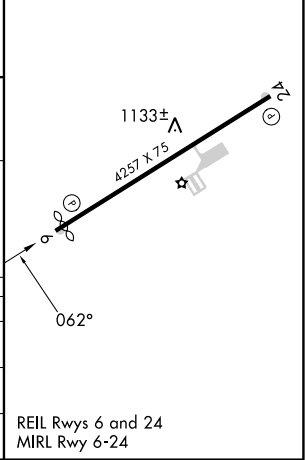
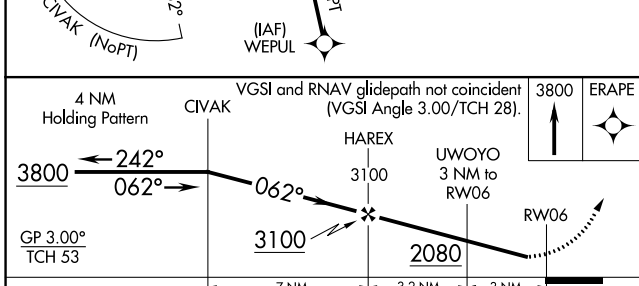
SRB AWOS-3 <b>128.25</b>	MEMPHIS CENTER <b>132.9 290.3</b>	UNICOM <b>122.8 (CTAF)</b>
-----------------------------	--------------------------------------	-------------------------------



SE-1, 22 FEB 2024 to 21 MAR 2024

SE-1, 22 FEB 2024 to 21 MAR 2024

ELEV 1084	<b>D</b>	TDZE 1079
-----------	----------	-----------



CATEGORY	A	B	C	D
LPV DA	1433-1	354 (400-1)		NA
LNAV/VNAV DA	1592-1 $\frac{3}{8}$	513 (600-1 $\frac{3}{8}$ )		NA
LNAV MDA	1580-1	501 (500-1)	1580-1 $\frac{3}{8}$ 501 (500-1 $\frac{3}{8}$ )	NA

REIL Rwy 6 and 24  
MIRL Rwy 6-24