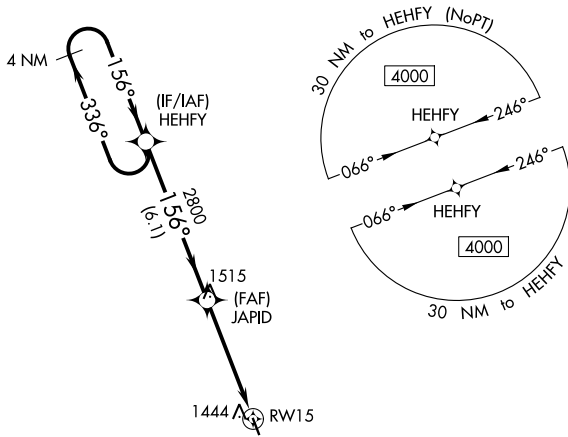


WAAS CH 58132 W15A	APP CRS 156°	Rwy Idg TDZE Apt Elev	3501 1306 1306
--	------------------------	-----------------------------	---

RNAV (GPS) RWY 15

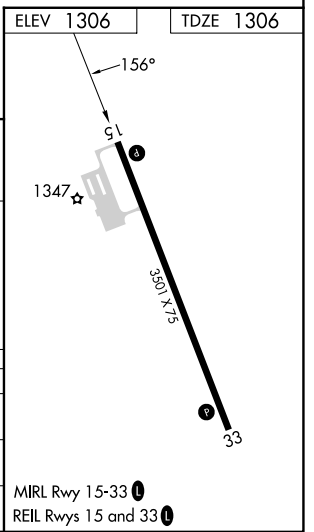
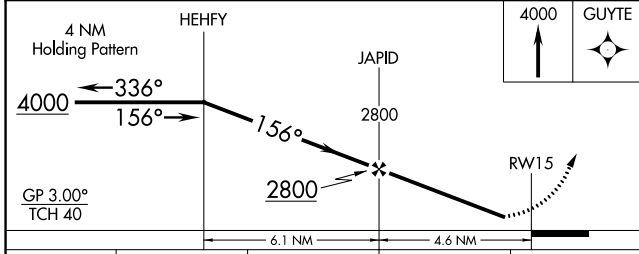
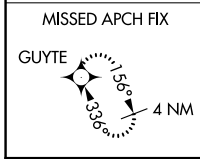
TECUMSEH MUNI (ØG3)

RNP APCH.		MISSED APPROACH: Climb to 4000 direct GUYTE and hold.
<p>▼ Baro-VNAV NA. Rwy 15 helicopter visibility reduction below ¾ SM NA.</p> <p>▲ NA Use Nebraska City altimeter setting, when not received, use Beatrice altimeter setting and increase all DA 3 feet and all MDA 20 feet.</p>		
AFK AWOS-3PT 128.325	MINNEAPOLIS CENTER 126.4 317.7	CTAF 122.9



NC-2, 22 FEB 2024 to 21 MAR 2024

NC-2, 22 FEB 2024 to 21 MAR 2024



CATEGORY	A	B	C	D
LPV DA	1619-1	313 (400-1)		NA
LNAV/VNAV DA	1670-1¼	364 (400-1¼)		NA
LNAV MDA	1780-1	474 (500-1)		NA

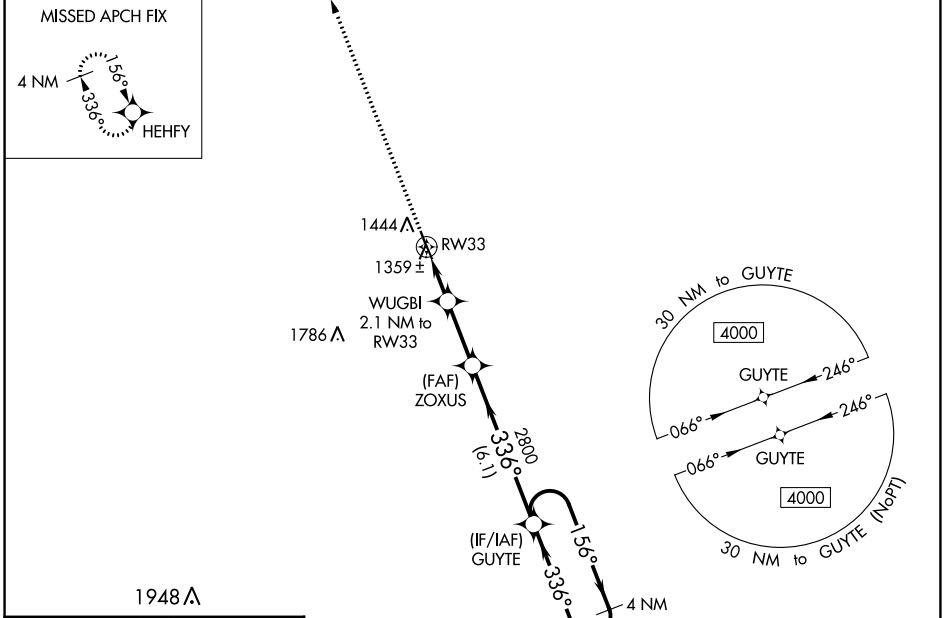
WAAS CH 63032 W33A	APP CRS 336°	Rwy Idg TDZE Apt Elev	3501 1306 1306
--	------------------------	-----------------------------	---

RNAV (GPS) RWY 33

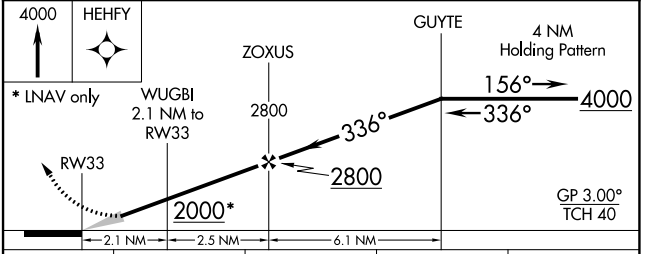
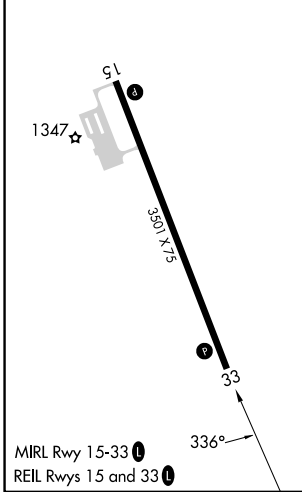
TECUMSEH MUNI (ØG3)

RNP APCH.	MISSED APPROACH: Climb to 4000 direct HEH FY and hold.
<p>▼ Baro-VNAV NA. Use Nebraska City altimeter setting, when not received, use Beatrice altimeter setting and increase all DA 3 feet and all MDA 20 feet.</p> <p>▲ NA</p>	

AFK AWOS-3PT 128.325	MINNEAPOLIS CENTER 126.4 317.7	CTAF 122.9 Ø
--------------------------------	--	-------------------------------



ELEV 1306	TDZE 1306
-----------	-----------



CATEGORY	A	B	C	D
LPV DA	1569-1	263 (300-1)		NA
LNAV/VNAV DA	1619-1	313 (400-1)		NA
LNAV MDA	1680-1	374 (400-1)		NA

NC-2, 22 FEB 2024 to 21 MAR 2024

NC-2, 22 FEB 2024 to 21 MAR 2024