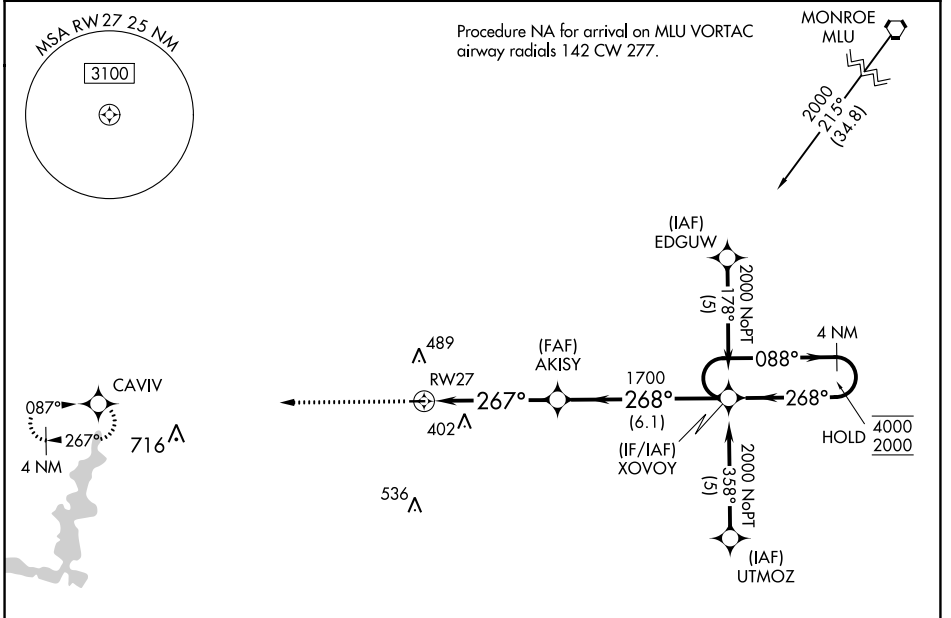


APP CRS	Rwy Idg	<b>3002</b>
<b>267°</b>	TDZE	<b>146</b>
	Apt Elev	<b>146</b>

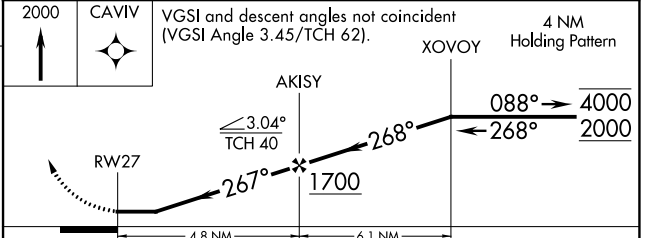
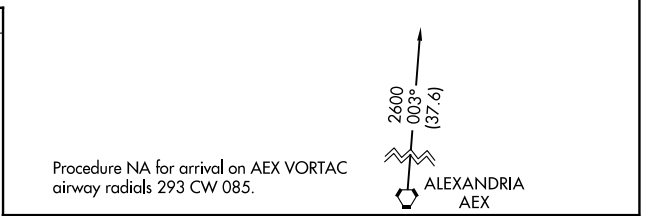
# RNAV (GPS) RWY 27

DAVID G JOYCE (ØR5)

RNP APCH - GPS.		MISSED APPROACH: Climb to 2000 direct CAVIV and hold.
<p><b>▽</b> Rwy 27 helicopter visibility reduction below 1 SM NA. Use Alexandria Intl altimeter setting, when not received use Esler Rgnl altimeter setting. Procedure NA at night.</p> <p><b>⚠</b> NA</p>		
AEX ASOS <b>123.975</b>	POLK APP CON <b>125.4 302.2</b>	UNICOM <b>122.7 (CTAF) 0</b>



ELEV 146	TDZE 146
----------	----------



CATEGORY	A	B	C	D
LNAV MDA	740-1 594 (600-1)		NA	

MIRL Rwy 9-27 0  
REIL Rwy 9 and 27 0

SC-4, 22 FEB 2024 to 21 MAR 2024

SC-4, 22 FEB 2024 to 21 MAR 2024

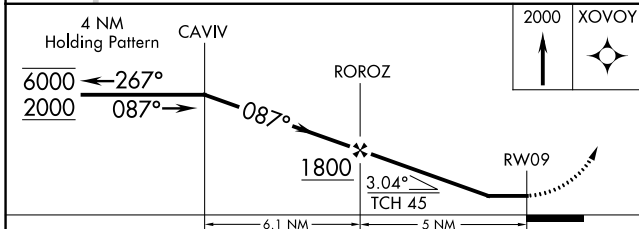
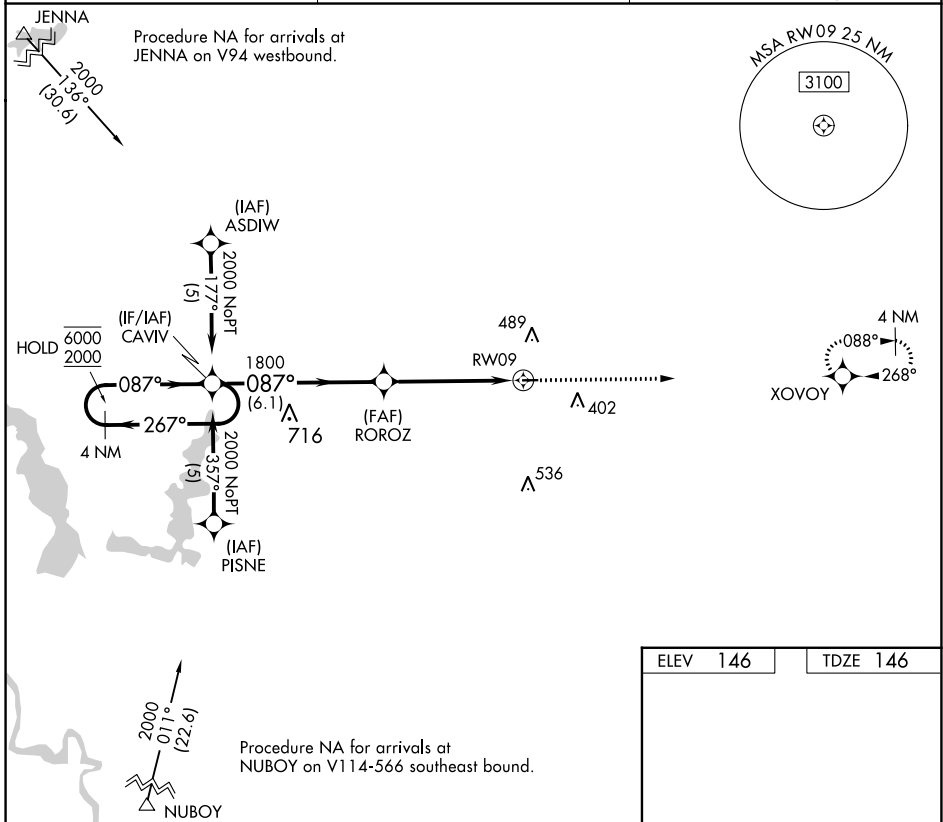
APP CRS	Rwy Idg	<b>3002</b>
<b>087°</b>	TDZE	<b>146</b>
	Apt Elev	<b>146</b>

# RNAV (GPS) RWY 9

DAVID G JOYCE (ØR5)

RNP APCH - GPS.	MISSED APPROACH: Climb to 2000 direct XVOVOY and hold.
<p><b>⚠</b> Procedure NA at night. Rwy 9 helicopter visibility reduction below 1 SM NA. Use Alexandria Intl altimeter setting, when not received use Esler Rgnl altimeter setting.</p>	

AEX ASOS <b>123.975</b>	POLK APP CON <b>125.4 302.2</b>	UNICOM <b>122.7 (CTAF) 0</b>
----------------------------	------------------------------------	---------------------------------



CATEGORY	A	B	C	D
LNAV MDA	780-1	634 (700-1)		NA
<b>C</b> CIRCLING	780-1 634 (700-1)	900-1 754 (800-1)		NA

ELEV 146	TDZE 146
----------	----------

MIRL Rwy 9-27 **0**  
REIL Rwys 9 and 27 **0**

SC-4, 22 FEB 2024 to 21 MAR 2024

SC-4, 22 FEB 2024 to 21 MAR 2024