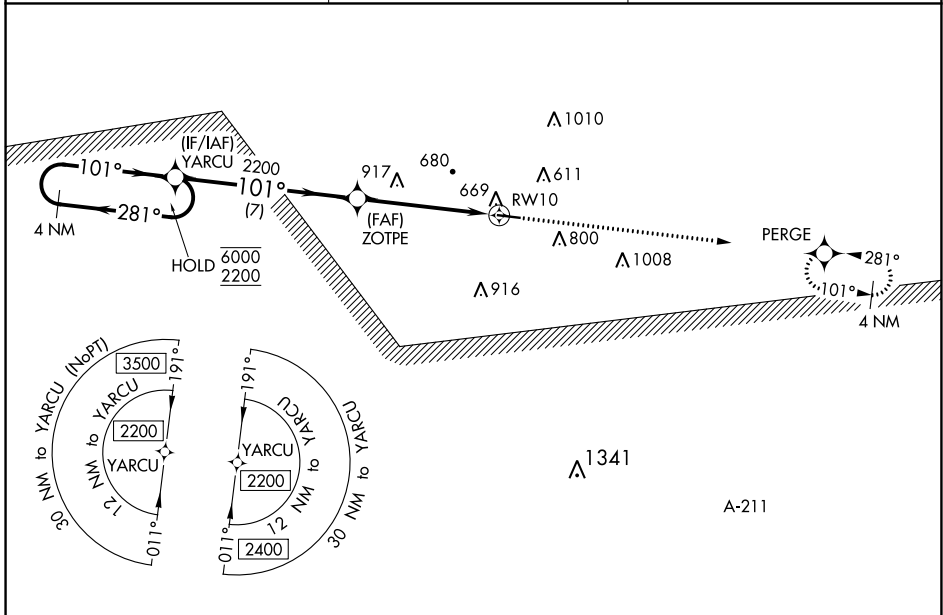


| | | |
|--|------------------------|---|
| WAAS CH 53436 W10A | APP CRS 101° | Rwy Idg TDZE 434 Apt Elev 435 |
|--|------------------------|---|

RNAV (GPS) RWY 10

CLAYTON MUNI (11A)

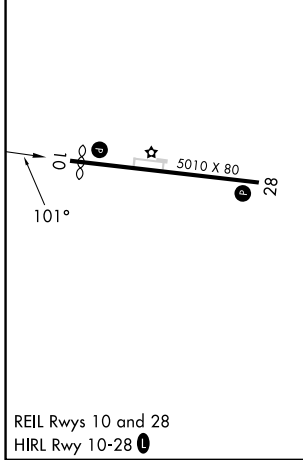
| | | |
|---|---|---|
| RNP APCH - GPS. | | MISSED APPROACH: Climb to 2200 direct PERGE and hold. |
| ▽ Rwy 10 helicopter visibility reduction below 3/4 SM NA. Baro-VNAV NA. ▲ NA Use Eufaula altimeter setting; when not received, use Troy altimeter setting. | | |
| EUF ASOS 128.325 | CAIRNS APP CON * 121.1 319.25 | CTAF 122.90 |



SE-4, 22 FEB 2024 to 21 MAR 2024

SE-4, 22 FEB 2024 to 21 MAR 2024

| | |
|----------|----------|
| ELEV 435 | TDZE 434 |
|----------|----------|



| | | | | | |
|--|-----------------------|-------------------------|-------------------------|-------------------------|------------|
| VGSI and RNAV glidepath not coincident (VGSI Angle 3.20/TCH 30). | | | | 2200 | PERGE |
| 4 NM Holding Pattern YARCU | | | | ↑ 2200 | ✦ PERGE |
| 6000 ← 281° 2200 ← 101° | | | | 2200 | |
| GP 3.00° TCH 40 | | | | 2200 | |
| | | | | 7 NM | 5.5 NM |
| CATEGORY | A | B | C | D | |
| LPV DA | 781-1 347 (400-1) | | | | |
| LNAV/VNAV DA | 1115-2½ 681 (700-2½) | | | | |
| LNAV MDA | 1180-1 746 (800-1) | 1180-1¼ 746 (800-1¼) | 1180-2 | 746 (800-2) | |
| C CIRCLING | 1180-1 745 (800-1) | 1180-1¼ 745 (800-1¼) | 1180-2¼ 745 (800-2¼) | 1300-2¾ 865 (900-2¾) | |