

| | | | |
|---------------------------------|------------------------|-----------------------------|---|
| WAAS CH 53428 W14A | APP CRS 140° | Rwy Idg TDZE Apt Elev | 4301 1692 1692 |
|---------------------------------|------------------------|-----------------------------|---|

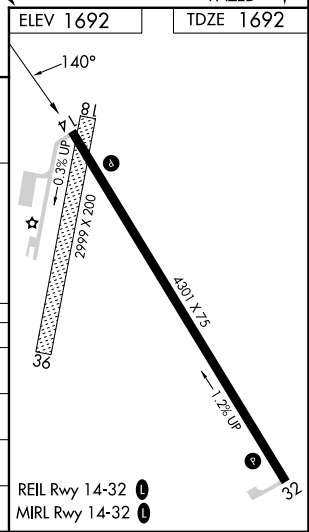
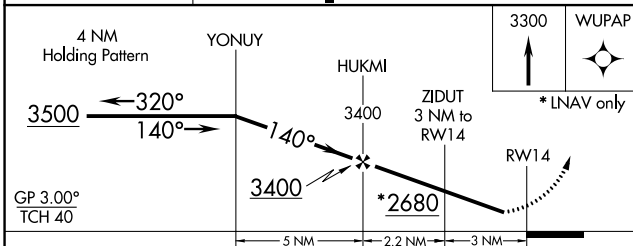
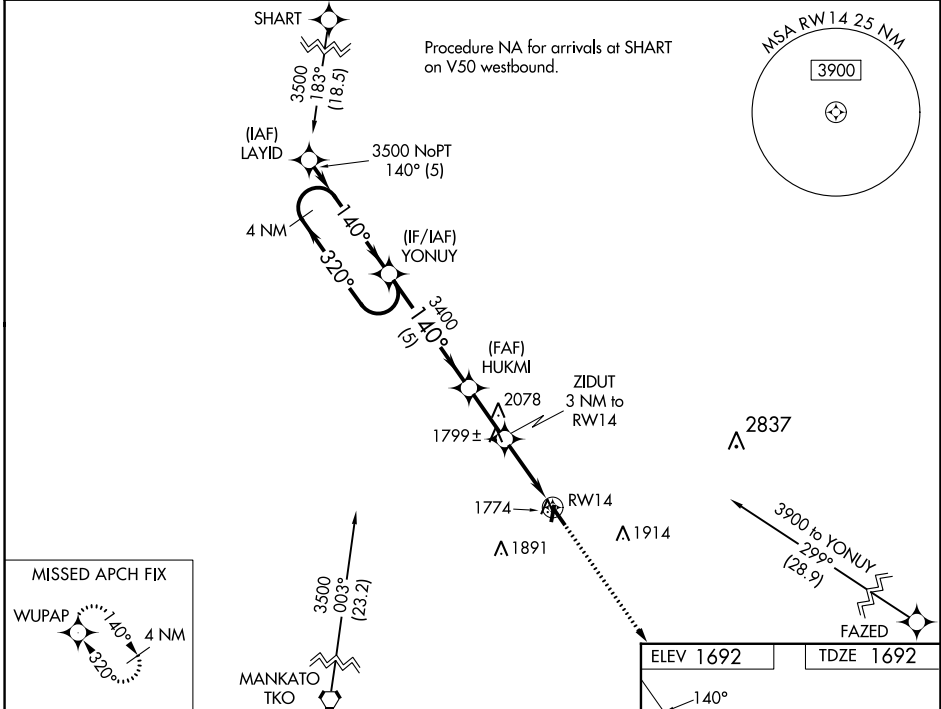
RNAV (GPS) RWY 14

SUPERIOR MUNI (12K)

NA DME/DME RNP-0.3 NA. Helicopter visibility reduction below 3/4 SM NA. Baro-VNAV NA. Use Hebron altimeter setting, when not received use Hastings altimeter setting and increase all DA 41 feet and all MDA 60 feet, increase LPV and LNAV/VNAV Cats A/B/C visibility to 1 1/4, increase Circling Cat C visibility to 2. Night Landing: Rwy 18, 36 NA.

MISSED APPROACH:
Climb to 3300 direct WUPAP and hold.

| | | |
|------------------------------|--|-------------------------------|
| HJH AWOS-3 118.525 | MINNEAPOLIS CENTER 119.4 278.8 | UNICOM 123.0 (CTAF) |
|------------------------------|--|-------------------------------|



| CATEGORY | A | B | C | D |
|--------------|----------------------------|-------------|----------------------------|----|
| LPV DA | 2026-1 1/8 334 (400-1 1/8) | | | NA |
| LNAV/VNAV DA | 2026-1 1/8 334 (400-1 1/8) | | | NA |
| LNAV MDA | 2140-1 | 448 (500-1) | 2140-1 3/8 448 (500-1 3/8) | NA |
| CIRCLING | 2360-1 | 668 (700-1) | 2360-1 3/4 668 (700-1 3/4) | NA |

NC-2, 22 FEB 2024 to 21 MAR 2024

NC-2, 22 FEB 2024 to 21 MAR 2024

| | | | |
|--|------------------------|---|-------------|
| WAAS CH 99428 W32A | APP CRS 320° | Rwy Idg TDZE 1680 Apt Elev 1692 | 4301 |
|--|------------------------|---|-------------|

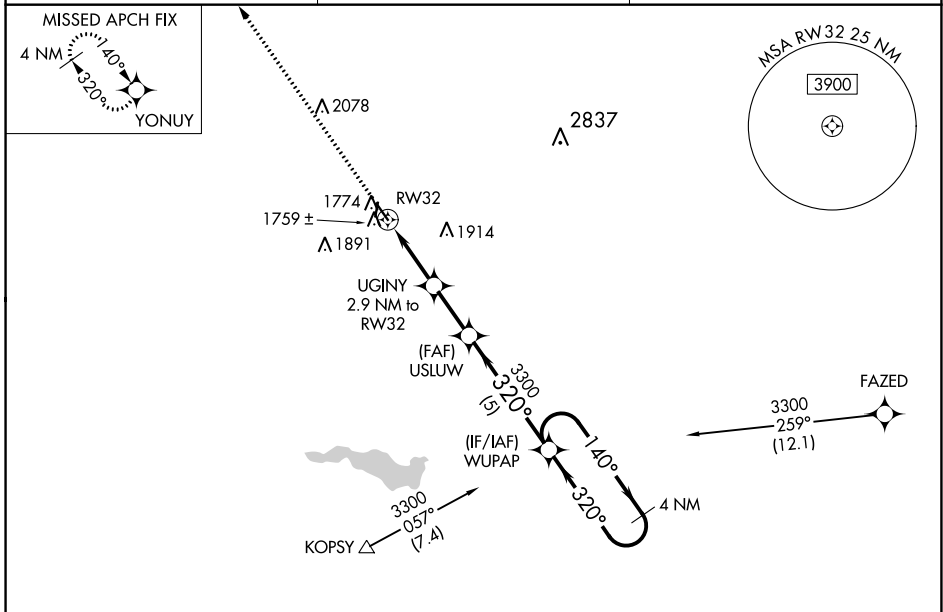
RNAV (GPS) RWY 32

SUPERIOR MUNI (12K)

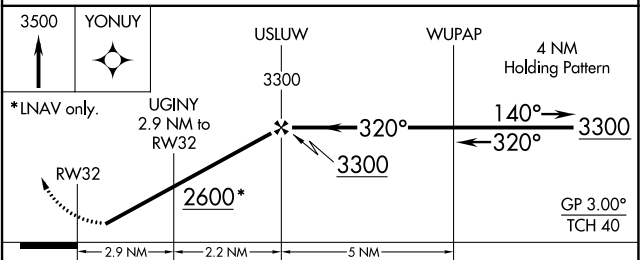
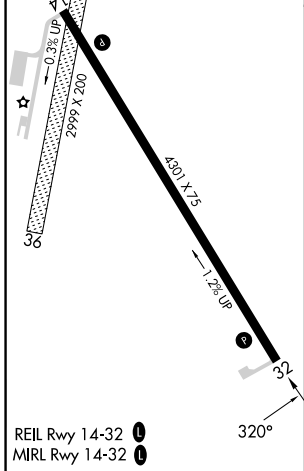
NA DME/DME RNP-0.3 NA. Rwy 32 helicopter visibility reduction below 3/4 SM NA. Baro-VNAV NA. Use Hebron altimeter setting, when not received use Hastings altimeter setting and increase all DA 41 feet and all MDA 60 feet, increase LPV Cats A/B/C visibility to 1 1/4 and LNAV/VNAV Cats A/B/C visibility to 1 3/8, increase LNAV Cat C visibility to 1 1/2, increase Circling Cat C visibility to 2. Circling to Rwy 18/36 NA at night.

MISSED APPROACH: Climb to 3500 direct YONUUY and hold.

| | | |
|------------------------------|--|-------------------------------|
| HJH AWOS-3 118.525 | MINNEAPOLIS CENTER 119.4 278.8 | UNICOM 123.0 (CTAF) |
|------------------------------|--|-------------------------------|



| | |
|-----------|-----------|
| ELEV 1692 | TDZE 1680 |
|-----------|-----------|



| CATEGORY | A | B | C | D |
|--------------|------------|-----------------|-------------------------------|----|
| LPV DA | 2014-1 1/8 | 334 (400-1 1/8) | | NA |
| LNAV/VNAV DA | 2054-1 1/4 | 374 (400-1 1/4) | | NA |
| LNAV MDA | 2160-1 | 480 (500-1) | 2160-1 3/8 480 (500-1 3/8) | NA |
| CIRCLING | 2360-1 | 668 (700-1) | 2360-1 3/4 668 (700-1 3/4) | NA |

NC-2, 22 FEB 2024 to 21 MAR 2024

NC-2, 22 FEB 2024 to 21 MAR 2024