

WAAS CH 48921 W17A	APP CRS 175°	Rwy Idg TDZE 840 Apt Elev 845	5014 840 845
----------------------------------------	------------------------	---------------------------------------------------	-----------------------------------------

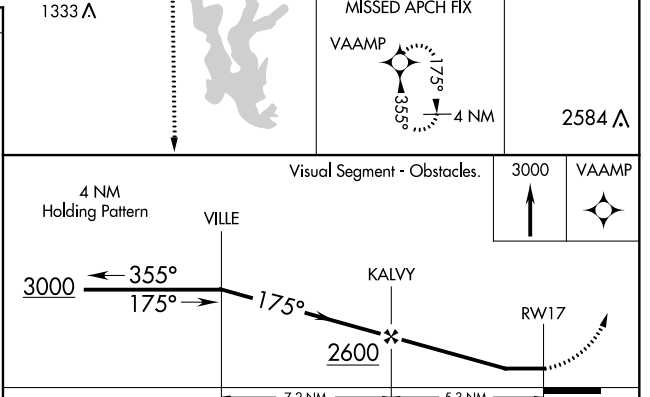
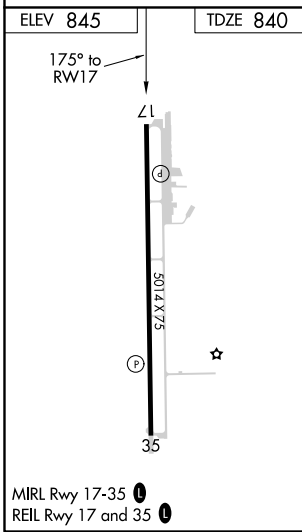
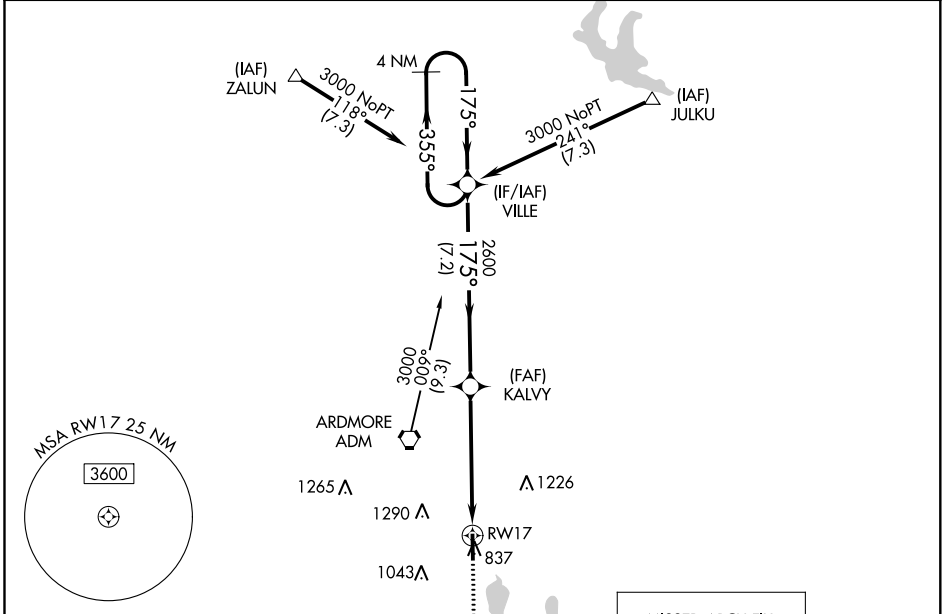
RNAV (GPS) RWY 17

ARDMORE DOWNTOWN EXECUTIVE (1F0)

▼ Rwy 17 helicopter visibility reduction below 1 SM NA.
▲ DME/DME RNP-0.3 NA.

MISSED APPROACH: Climb to 3000 direct VAAMP and hold.

AWOS-3 118.15	FORT WORTH CENTER 124.75 323.0	UNICOM 122.7 (CTAF) 0
-------------------------	------------------------------------------	---------------------------------



CATEGORY	A	B	C	D
LP MDA	1360-1	520 (600-1)	1360-1½	520 (600-1½)
LNNAV MDA	1360-1	520 (600-1)	1360-1½	520 (600-1½)
CIRCLING	1400-1	555 (600-1)	1400-1½ 555 (600-1½)	1640-2½ 795 (800-2½)

SC-1, 17 JUN 2021 to 15 JUL 2021

SC-1, 17 JUN 2021 to 15 JUL 2021

WAAS CH 62921 W35A	APP CRS 355°	Rwy Idg 5014 TDZE 845 Apt Elev 845
----------------------------------------	------------------------	---------------------------------------------------------------

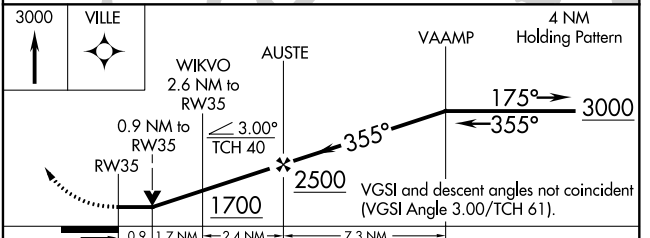
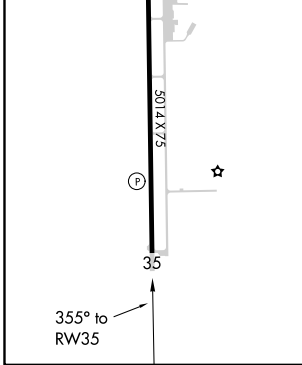
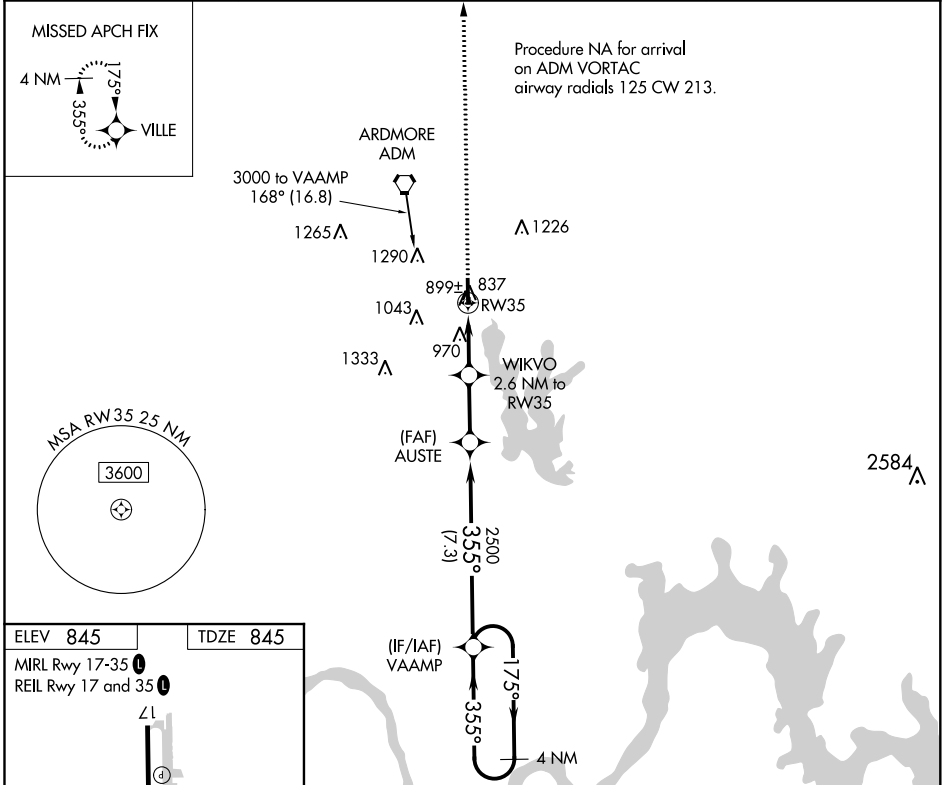
RNAV (GPS) RWY 35

ARDMORE DOWNTOWN EXECUTIVE (1F(0))

▼ Rwy 35 helicopter visibility reduction below 3/4 SM NA.
▲ DME/DME RNP-0.3 NA.

MISSED APPROACH: Climb to 3000 direct VILLE and hold.

AWOS-3 118.15	FORT WORTH CENTER 124.75 323.0	UNICOM 122.7 (CTAF) 0
-------------------------	------------------------------------------	---------------------------------



CATEGORY	A	B	C	D
LP MDA		1200-1	355 (400-1)	
LNAV MDA		1220-1	375 (400-1)	
CIRCLING	1400-1	555 (600-1)	1400-1½ 555 (600-1½)	1640-2½ 795 (800-2½)

SC-1, 17 JUN 2021 to 15 JUL 2021

SC-1, 17 JUN 2021 to 15 JUL 2021