

APP CRS	Rwy Idg	<b>3400</b>
<b>009°</b>	TDZE	<b>580</b>
	Apt Elev	<b>585</b>

# RNAV (GPS) RWY 1

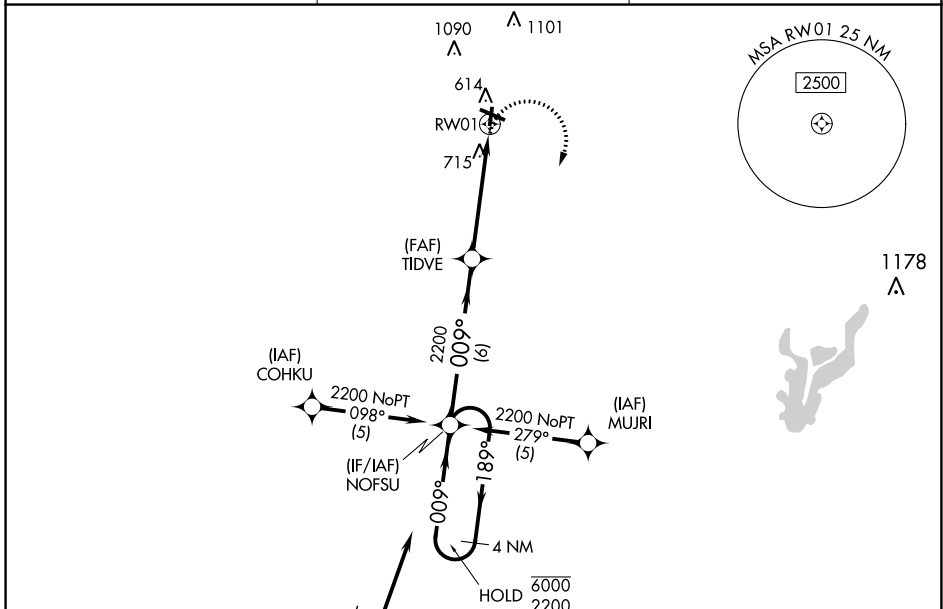
EFFINGHAM COUNTY MEML (1H2)

RNP APCH - GPS.

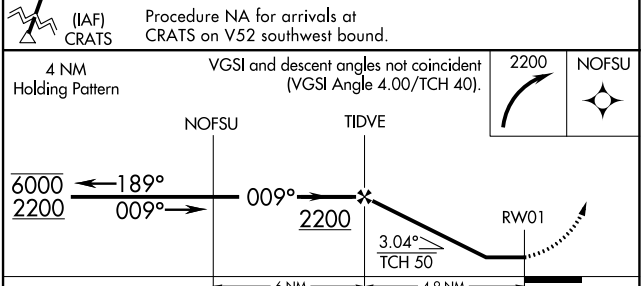
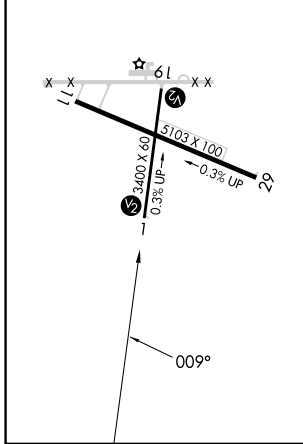
**▼** Rwy 1 helicopter visibility reduction below 1 SM NA. Straight-in Rwy 1 NA at night, Circling Rwy 1, 19 NA at night. When local altimeter setting not received, use Olney-Noble altimeter setting and increase all MDA 80 feet and increase LNAV visibility Cat C ¼ SM, and Circling visibility Cat C ¼ SM.

**▲** MISSED APPROACH: Climbing right turn to 2200 direct NOFSU and hold.

AWOS-3PT <b>118.375</b>	KANSAS CITY CENTER <b>124.3 269.15</b>	UNICOM <b>122.725 (CTAF) 0</b>
----------------------------	---	-----------------------------------



ELEV <b>585</b>	TDZE <b>580</b>
REIL Rwy 11 and 29	
MIRL Rwy 1-19 and 11-29	



CATEGORY	A	B	C	D
LNAV MDA	1020-1	440 (500-1)	1020-1¼ 440 (500-1¼)	NA
<b>C</b> CIRCLING	1020-1 435 (500-1)	1140-1 555 (600-1)	1440-2½ 855 (900-2½)	NA

EC-3, 22 FEB 2024 to 21 MAR 2024

EC-3, 22 FEB 2024 to 21 MAR 2024

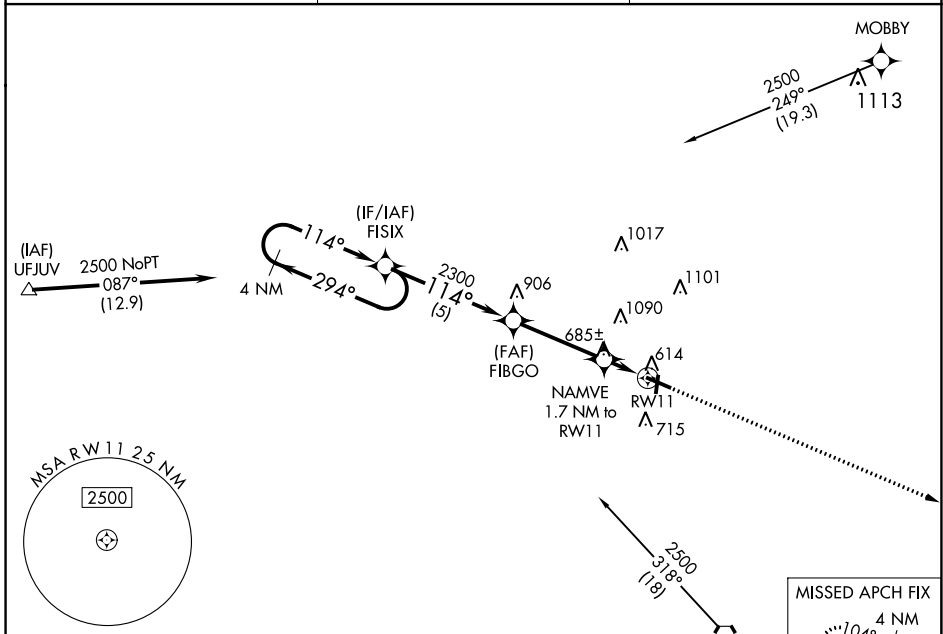
WAAS CH <b>99439</b> <b>W11A</b>	APP CRS <b>114°</b>	Rwy Idg <b>5103</b> TDZE <b>585</b> Apt Elev <b>585</b>
--	------------------------	---

# RNAV (GPS) RWY 11

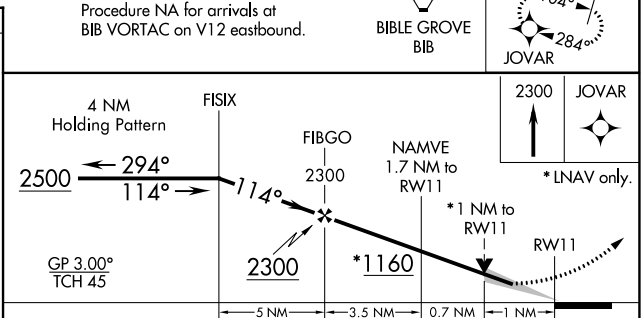
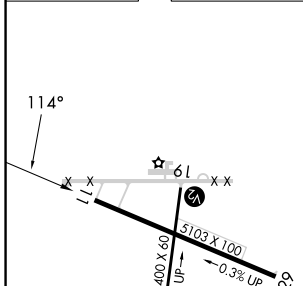
EFFINGHAM COUNTY MEML (1H2)

RNP APCH.	For uncompensated Baro-VNAV systems, LNAV/VNAV NA below -16°C or above 54°C. Straight-in Rwy 1 NA at night, Circling Rwy 1, 19 NA at night.	MISSED APPROACH: Climb to 2300 direct JOVAR and hold.
-----------	---	---

AWOS-3PT <b>118.375</b>	KANSAS CITY CENTER <b>124.3 269.15</b>	UNICOM <b>122.725</b> (CTAF) <b>0</b>
----------------------------	---	--



ELEV 585	TDZE 585
----------	----------



CATEGORY	A	B	C	D
LPV DA		835-1	250 (300-1)	
LNAV/VNAV DA		856-1	271 (300-1)	
LNAV MDA		940-1	355 (400-1)	
<b>C</b> CIRCLING	1020-1 435 (500-1)	1140-1 555 (600-1)	1440-2½ 855 (900-2½)	1440-2¾ 855 (900-2¾)

REIL Rwy 11 and 29 **0**  
MIRL Rwy 1-19 and 11-29 **0**

EC-3, 22 FEB 2024 to 21 MAR 2024

EC-3, 22 FEB 2024 to 21 MAR 2024

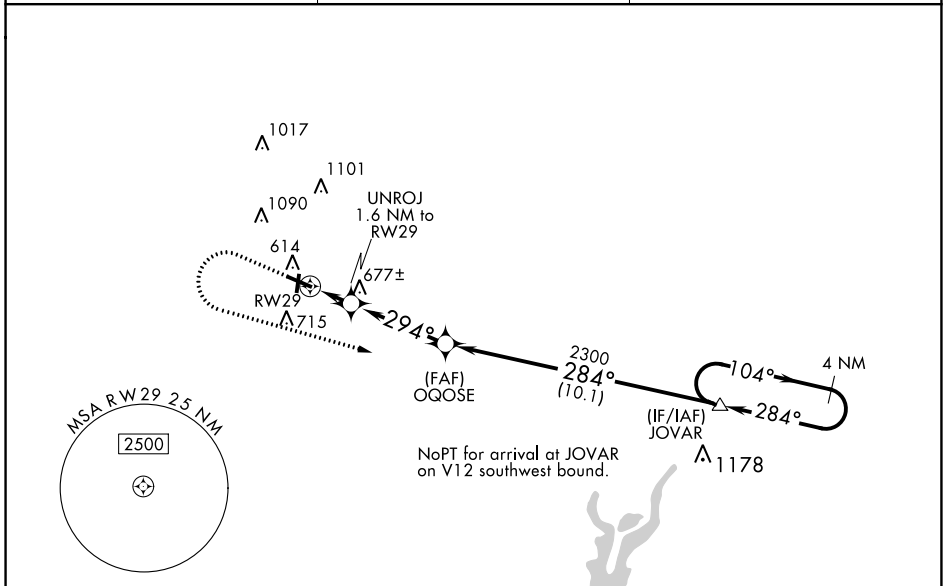
WAAS CH <b>93933</b> <b>W29A</b>	APP CRS <b>294°</b>	Rwy Idg <b>5103</b> TDZE <b>579</b> Apt Elev <b>585</b>
--	------------------------	---

# RNAV (GPS) RWY 29

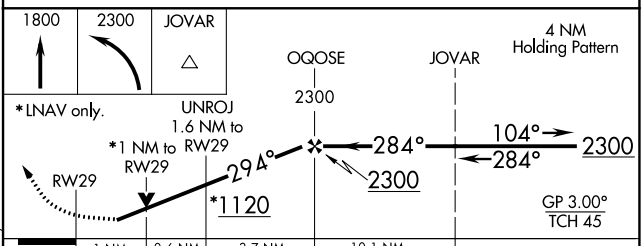
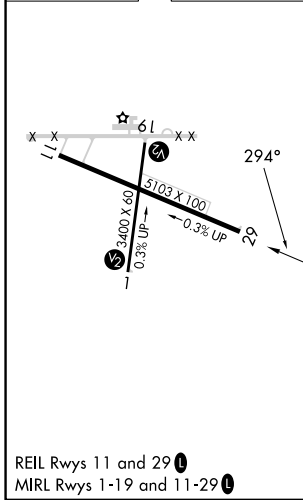
EFFINGHAM COUNTY MEML (1H2)

RNP APCH.	<p><b>▼</b> Rwy 29 helicopter visibility reduction below <math>\frac{3}{4}</math> SM NA. Straight-in Rwy 1 NA at night, Circling Rwy 1, 19 NA at night. For uncompensated Baro-VNAV systems, LNAV/VNAV below <math>-16^{\circ}\text{C}</math> or above <math>54^{\circ}\text{C}</math>. Baro-VNAV and VDP NA when using Olney-Noble altimeter setting. When local altimeter setting not received, use Olney-Noble altimeter setting and increase all DA 77 feet and all MDA 80 feet; increase LPV all Cats and Circling Cat C/D visibility <math>\frac{1}{4}</math> SM, increase LNAV/VNAV all Cats visibility <math>\frac{3}{8}</math> SM.</p>	MISSED APPROACH: Climb to 1800 then climbing left turn to 2300 direct JOVAR and hold.
-----------	---	--

AWOS-3PT <b>118.375</b>	KANSAS CITY CENTER <b>124.3 269.15</b>	UNICOM <b>122.725 (CTAF) 0</b>
----------------------------	---	-----------------------------------



ELEV <b>585</b>	TDZE <b>579</b>
-----------------	-----------------



CATEGORY	A	B	C	D
LPV DA		838- $\frac{7}{8}$	259 (300- $\frac{7}{8}$ )	
LNAV/VNAV DA		859- $\frac{7}{8}$	280 (300- $\frac{7}{8}$ )	
LNAV MDA		940-1	361 (400-1)	
<b>C</b> CIRCLING	1020-1 435 (500-1)	1140-1 555 (600-1)	1440-2 $\frac{1}{2}$ 855 (900-2 $\frac{1}{2}$ )	1440-2 $\frac{3}{4}$ 855 (900-2 $\frac{3}{4}$ )

EC-3, 22 FEB 2024 to 21 MAR 2024

EC-3, 22 FEB 2024 to 21 MAR 2024