

WAAS CH 40136 W15A	APP CRS 182°	Rwy Idg 2775 TDZE 147 Apt Elev 147
--	------------------------	---

RNAV (GPS) RWY 15

KINGSTON-ULSTER (20N)

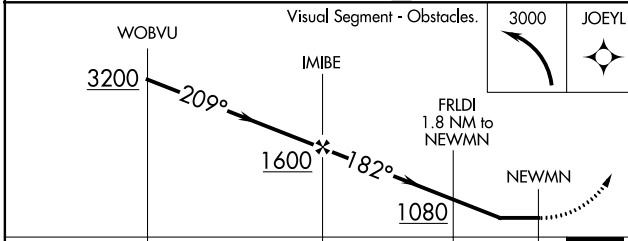
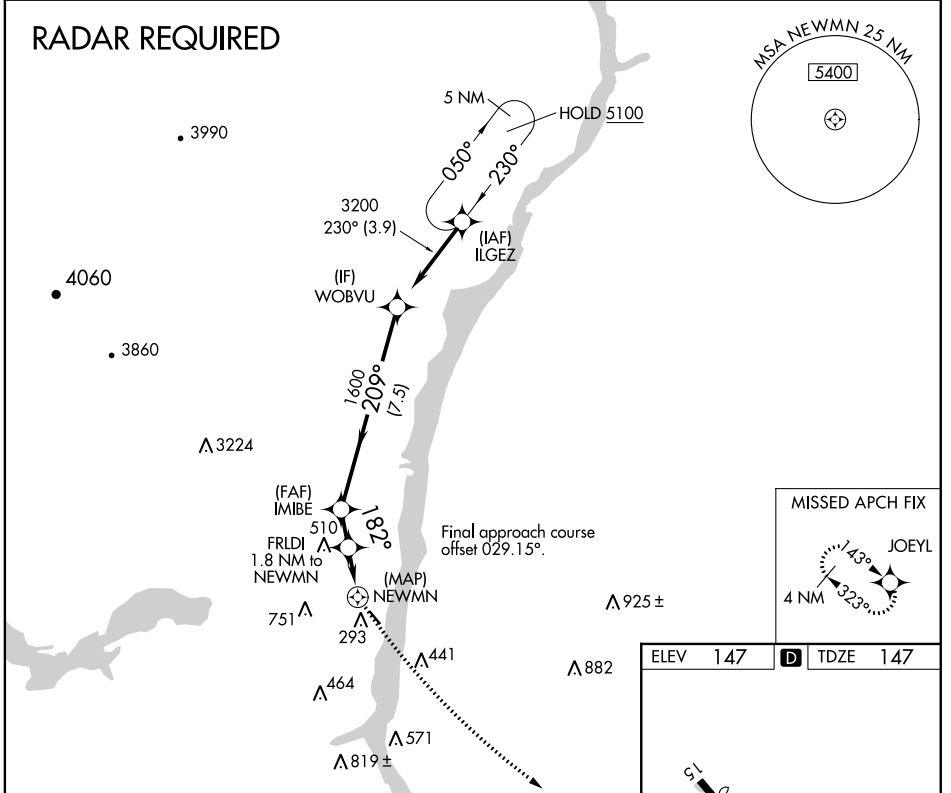
▼ DME/DME RNP-0.3 NA. Helicopter visibility reduction below 1 SM NA.
▲ NA Use Hudson altimeter setting. When not received, use Newburgh altimeter setting and increase all MDA 60 feet. Night landing: Rwy 15 NA.

MISSED APPROACH: Climbing left turn to 3000 direct JOEYL and hold.

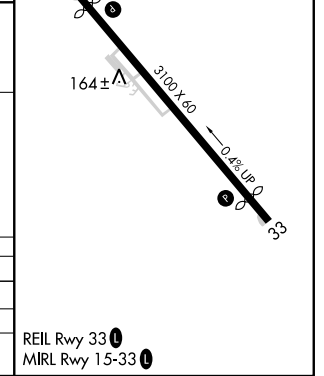
NEW YORK APP CON
132.75 363.1

UNICOM
123.8 (CTAF)

123.3



CATEGORY	A	B	C	D
LP MDA	720-1	573 (600-1)		NA
LNAV MDA	800-1	653 (700-1)		NA
C CIRCLING	800-1 653 (700-1)	960-1¼ 813 (900-1¼)		NA



NE-2, 02 DEC 2021 to 30 DEC 2021

NE-2, 02 DEC 2021 to 30 DEC 2021

WAAS CH 82336 W33A	APP CRS 333°	Rwy Idg 2630 TDZE 147 Apt Elev 147
--	------------------------	---

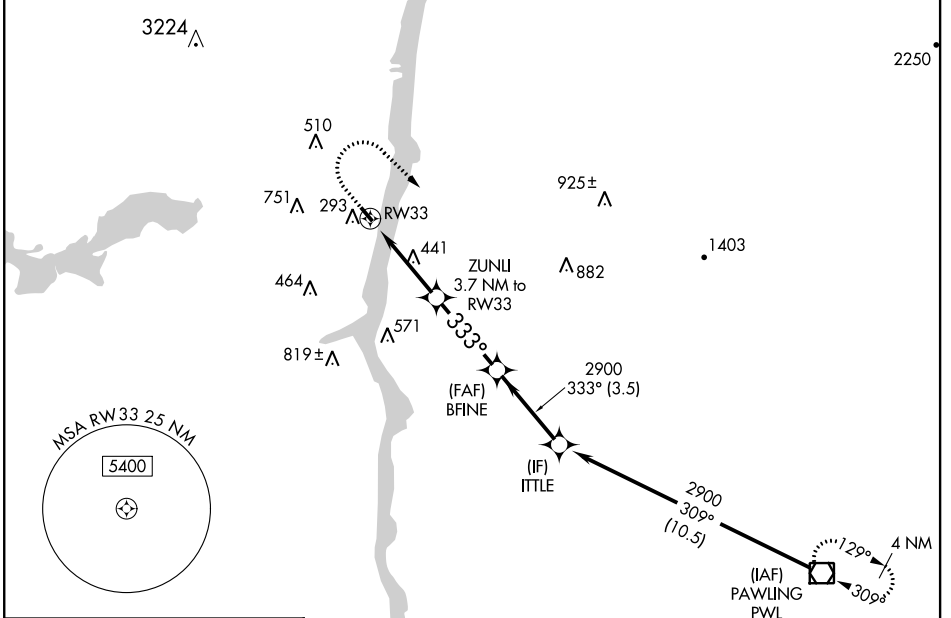
RNAV (GPS) RWY 33

KINGSTON-ULSTER (20N)

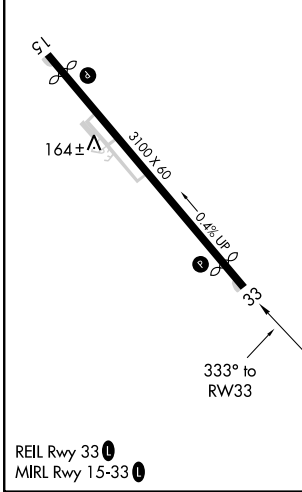
RNP APCH. Use Hudson altimeter setting. When not received, use Newburgh altimeter setting and increase all MDA 60 feet. Baro-VNAV NA. Rwy 33 helicopter visibility reduction below 1 SM NA. Straight-in Rwy 33 at night operational VGSI required, remain on or above VGSI glidepath until threshold. Circling Rwy 15 NA at night.

MISSED APPROACH: Climb to 600, then climbing right turn to 3000 direct PWL VOR/DME and hold.

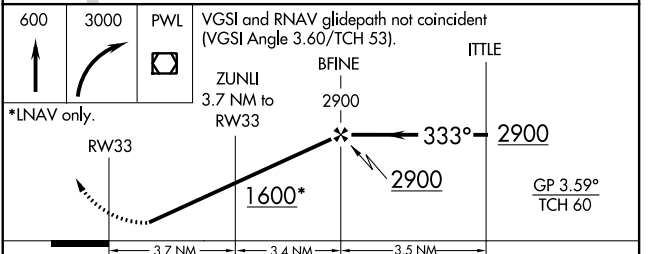
NEW YORK APP CON 132.75 363.1	UNICOM 122.8 (CTAF)	123.3
---	-------------------------------	--------------



ELEV 147		TDZE 147
----------	--	----------



Procedure NA for arrivals on PWL VOR/DME airway radials 250 CW 354.



CATEGORY	A	B	C	D
LPV DA	499-1	352 (400-1)		NA
LNAV/VNAV DA	635-1 ³ / ₈	489 (500-1 ³ / ₈)		NA
LNAV MDA	880-1 733 (800-1)	880-1 ¹ / ₄ 733 (800-1 ¹ / ₄)		NA
CIRCLING	880-1 733 (800-1)	960-1 ¹ / ₄ 813 (900-1 ¹ / ₄)		NA

NE-2, 02 DEC 2021 to 30 DEC 2021

NE-2, 02 DEC 2021 to 30 DEC 2021