

WAAS CH 77535 W23A	APP CRS 233°	Rwy Idg TDZE Apt Elev	3508 610 610
--	------------------------	-----------------------------	---

RNAV (GPS) RWY 23

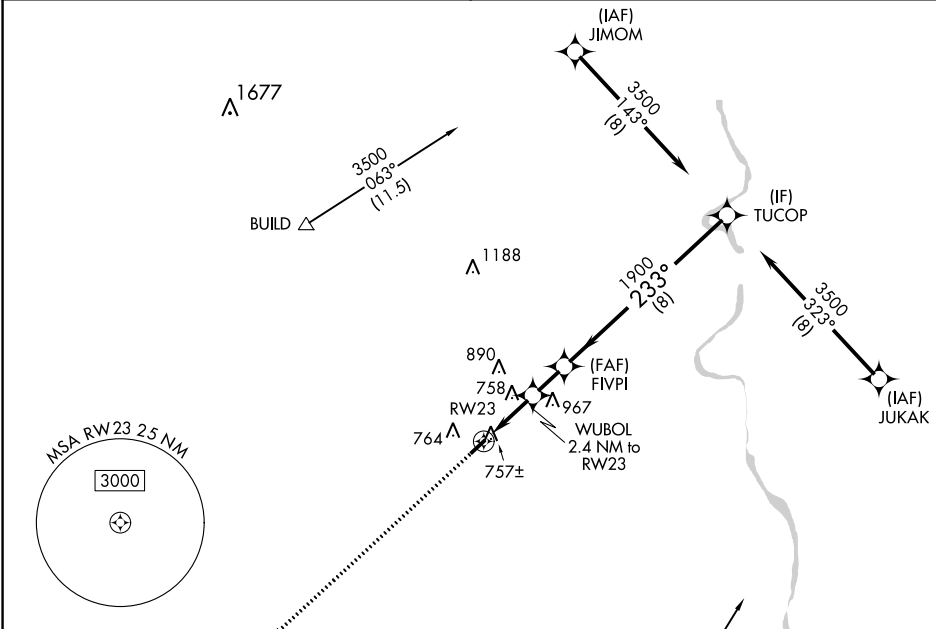
UNION COUNTY, TROY SHELTON FLD (35A)

RNP APCH.

▼ When local altimeter setting not received, use Laurens altimeter setting.
 ▲ NA Procedure NA at night. Rwy 23 helicopter visibility reduction below 1 SM NA.

MISSED APPROACH: Climb to 3500 direct ZONLU and hold.

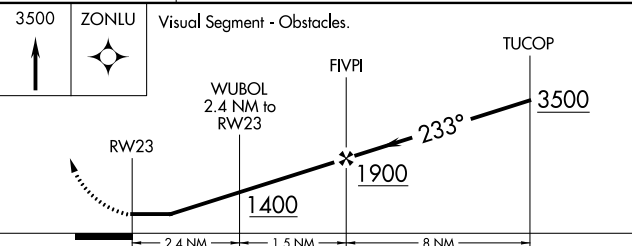
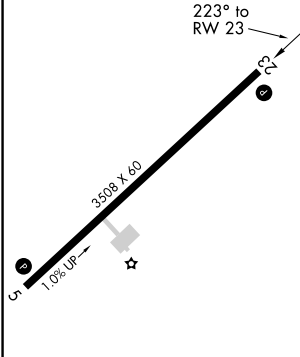
AWOS-3PT 119.45	GREER APP CON ★ 119.4 350.2	UNICOM 122.7 (CTAF) ①
---------------------------	---------------------------------------	---------------------------------



SE-2, 22 FEB 2024 to 21 MAR 2024

SE-2, 22 FEB 2024 to 21 MAR 2024

ELEV 610	TDZE 610
----------	----------



CATEGORY		A	B	C	D
LP	MDA	1080-1	470 (500-1)		NA
LNAV	MDA	1140-1	530 (600-1)		NA
☑	CIRCLING	1180-1	570 (600-1)		NA