

APP CRS	Rwy Idg	2697
140°	TDZE	763
	Apt Elev	763

RNAV (GPS) RWY 14

EPHRAIM/GIBRALTAR (3D2)

RNP APCH - GPS.

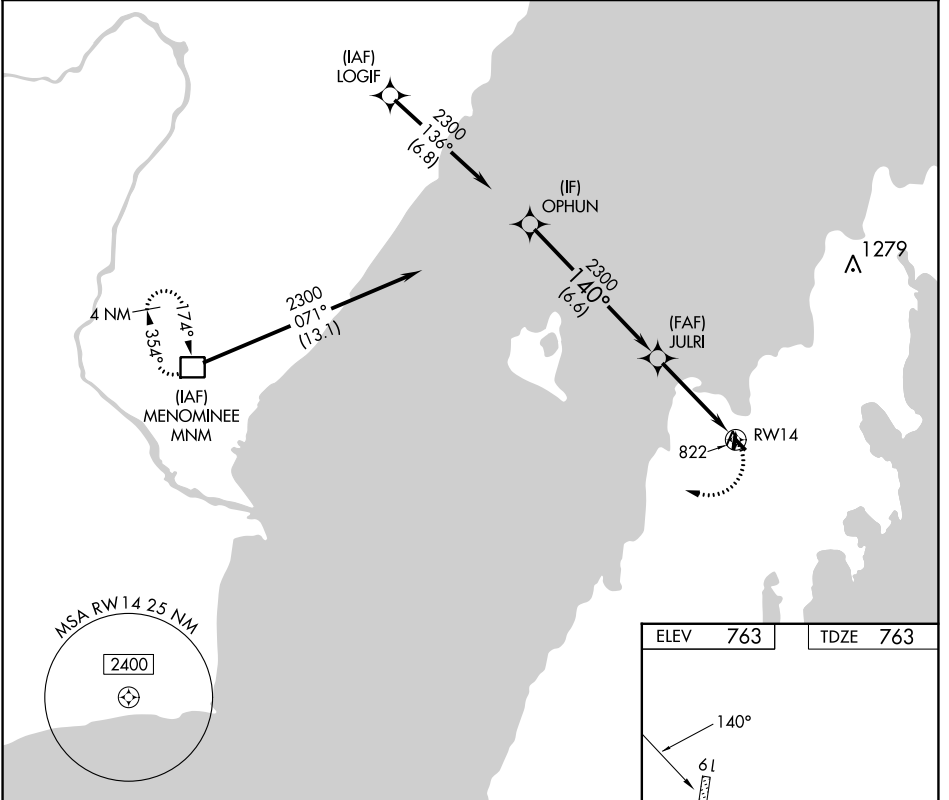
▼
▲ Rwy 14 helicopter visibility reduction below ¾ SM NA.

MISSED APPROACH: Climbing right turn to 3000 direct MNM DME and hold.

AWOS-3PT
124.175

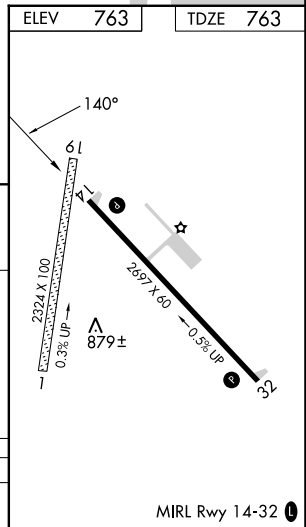
GREEN BAY APP CON★
120.3 338.2

UNICOM
123.0 (CTAF) 0

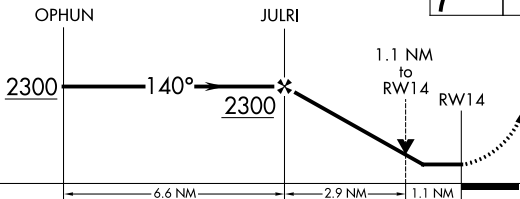


EC-3, 22 FEB 2024 to 21 MAR 2024

EC-3, 22 FEB 2024 to 21 MAR 2024



Visual segment - obstacles.



CATEGORY	A	B	C	D
LNAV MDA	1200-1	437 (500-1)	1200-1¼ 437 (500-1¼)	NA

MIRL Rwy 14-32 0

APP CRS	Rwy Idg	2697
320°	TDZE	763
	Apt Elev	763

RNAV (GPS) RWY 32

EPHRAIM/GIBRALTAR (3D2)

RNP APCH - GPS.

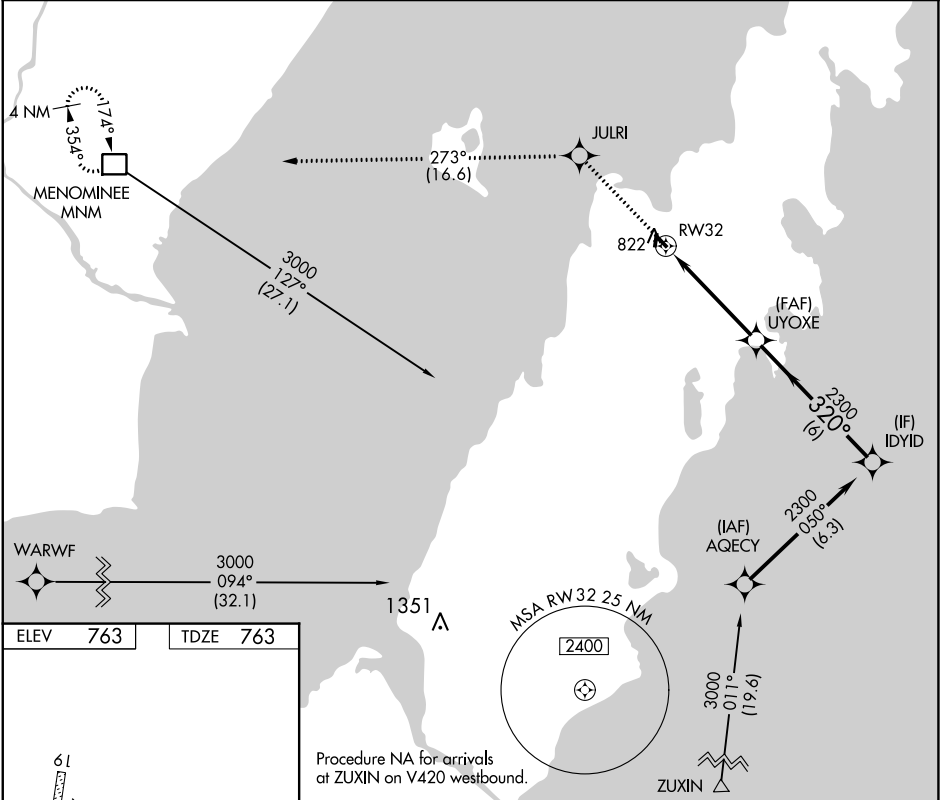
MISSED APPROACH: Climb to 3000 direct JULRI and on track 273° to MNM DME and hold.

▼
▲ Procedure NA at night. Rwy 32 helicopter visibility reduction below 3/4 SM NA.

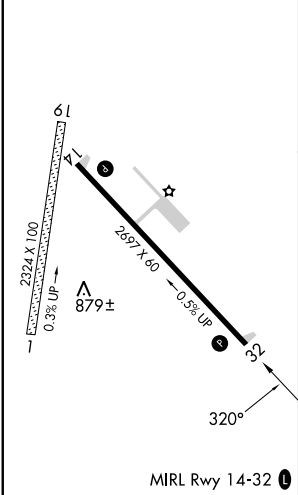
AWOS-3PT
124.175

GREEN BAY APP CON★
120.3 338.2

UNICOM
123.0 (CTAF) 0

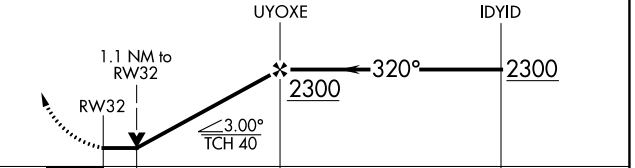


ELEV	763	TDZE	763
------	------------	------	------------



Procedure NA for arrivals at ZUXIN on V420 westbound.

3000	JULRI	tr 273°	MNM	VGSI and descent angles not coincident (VGSI Angle 3.00/TCH 25).
↑	✧		□	



CATEGORY	A	B	C	D
LNAV MDA	1120-1	357 (400-1)		NA

EC-3, 22 FEB 2024 to 21 MAR 2024

EC-3, 22 FEB 2024 to 21 MAR 2024