

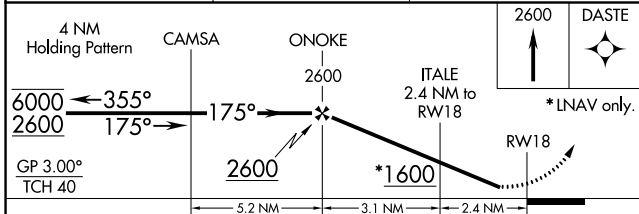
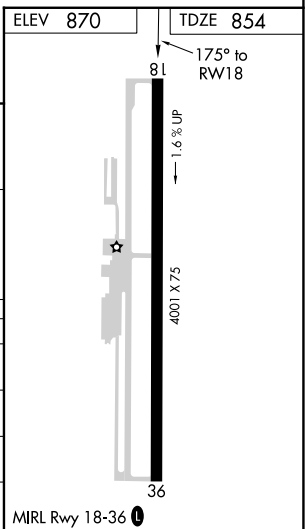
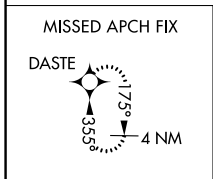
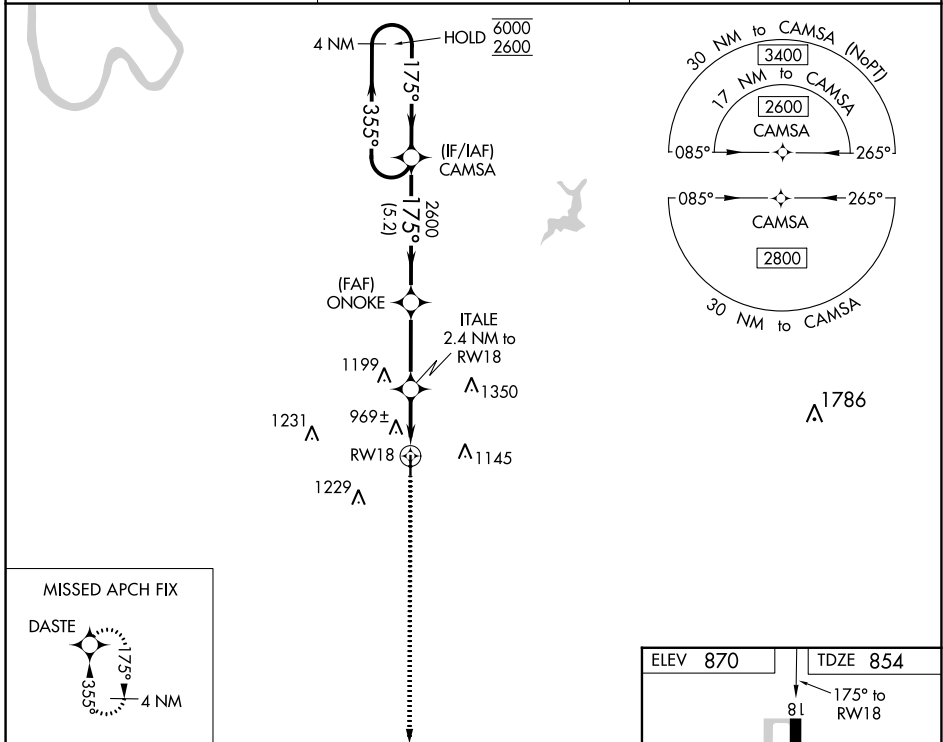
WAAS CH 53643 W18A	APP CRS 175°	Rwy Idg TDZE Apt Elev	4001 854 870
--	------------------------	-----------------------------	---

RNAV (GPS) RWY 18

JONES MEML (3F7)

RNP APCH.	▼ Rwy 18 helicopter visibility reduction below ¾ SM NA. ▲ NA Baro-VNAV NA. Use Cushing altimeter setting.	MISSED APPROACH: Climb to 2600 direct DASTE and hold.
-----------	--	---

CUH AWOS-3 118.25	KANSAS CITY CENTER 127.8 319.1	CTAF 122.9
-----------------------------	--	----------------------



CATEGORY	A	B	C	D
LPV DA	1156-1	302 (300-1)		NA
LNAV/VNAV DA	1191-1	337 (400-1)		NA
LNAV MDA	1280-1	426 (500-1)	1280-1¼ 426 (500-1¼)	NA
CIRCLING	1380-1 510 (600-1)	1500-1 630 (700-1)	1600-2 730 (800-2)	NA

SC-1, 22 FEB 2024 to 21 MAR 2024

SC-1, 22 FEB 2024 to 21 MAR 2024

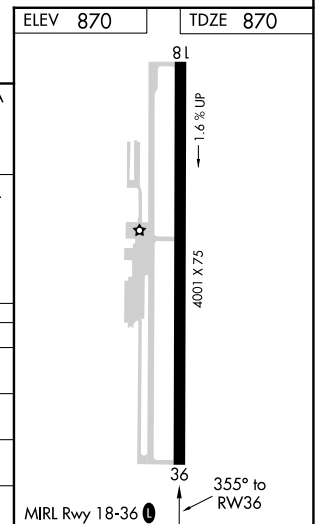
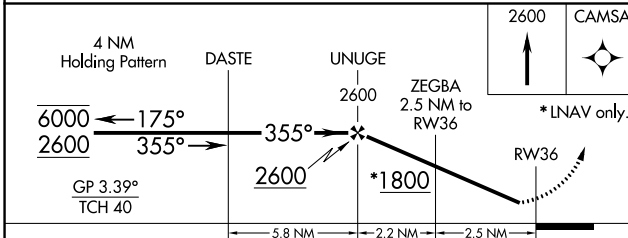
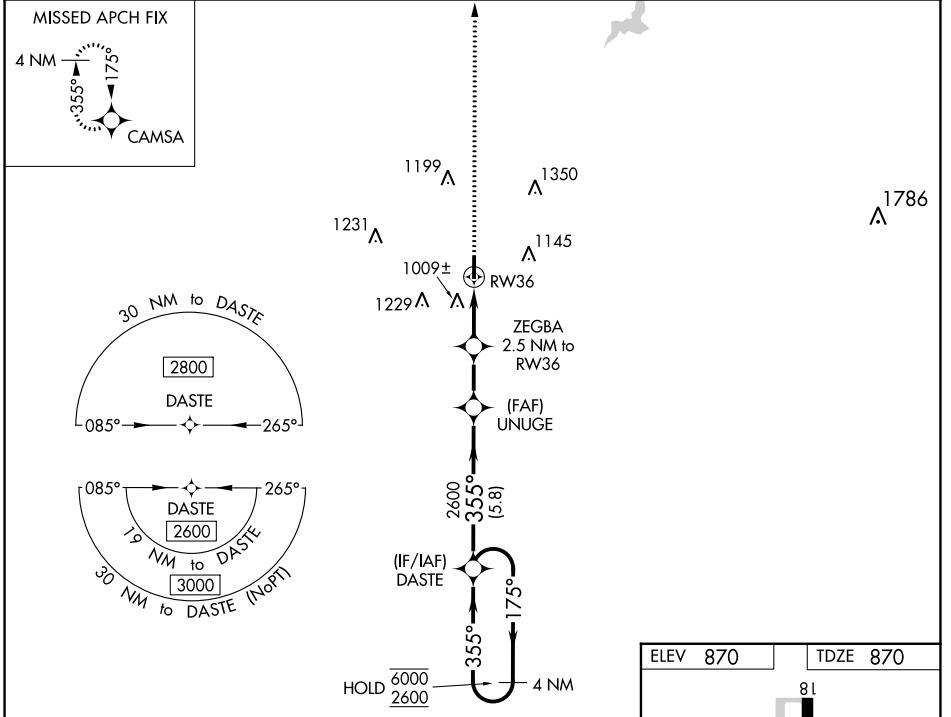
WAAS CH 72843 W36A	APP CRS 355°	Rwy ldg TDZE 870 Apt Elev 870	4001
--	------------------------	---	-------------

RNAV (GPS) RWY 36

JONES MEML (3F7)

RNP APCH. ▼ Rwy 36 helicopter visibility reduction below 3/4 SM NA. ▲ NA Baro-VNAV NA. Use Cushing altimeter setting.	MISSED APPROACH: Climb to 2600 direct CAMSA and hold.
---	---

CUH AWOS-3 118.25	KANSAS CITY CENTER 127.8 319.1	CTAF 122.9
-----------------------------	--	----------------------



CATEGORY	A	B	C	D
LPV DA	1225-1	355 (400-1)		NA
LNAV/VNAV DA	1367-1 ³ / ₈	497 (500-1 ³ / ₈)		NA
LNAV MDA	1320-1	450 (500-1)	1320-1 ³ / ₈ 450 (500-1 ³ / ₈)	NA
CIRCLING	1380-1 510 (600-1)	1500-1 630 (700-1)	1600-2 730 (800-2)	NA

SC-1, 22 FEB 2024 to 21 MAR 2024

SC-1, 22 FEB 2024 to 21 MAR 2024