

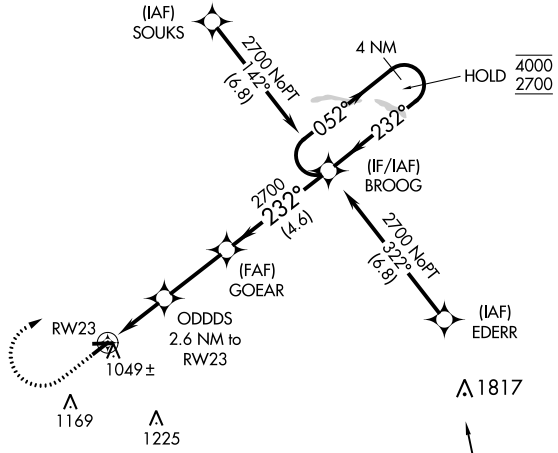
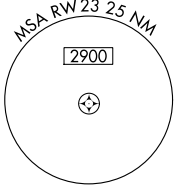
APP CRS	Rwy Idg	<b>3760</b>
<b>232°</b>	TDZE	<b>932</b>
	Apt Elev	<b>936</b>

# RNAV (GPS) RWY 23

SHERIDAN (5I4)

RNP APCH - GPS.	MISSED APPROACH: Climb to 1800 then climbing right turn to 2700 direct BROOG and hold.
<b>▲ NA</b> Circling NA to Rwy 9 and 27. Procedure NA at night. Rwy 23 helicopter visibility reduction below 1 SM NA. Use Indianapolis Exec altimeter setting.	

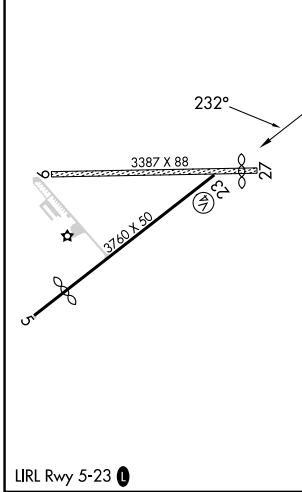
TYQ AWOS-3PT <b>120.725</b>	INDIANAPOLIS APP CON <b>124.65 317.8</b>	UNICOM <b>123.075 (CTAF) ①</b>
--------------------------------	---	-----------------------------------



EC-2, 22 FEB 2024 to 21 MAR 2024

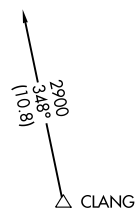
EC-2, 22 FEB 2024 to 21 MAR 2024

ELEV 936	TDZE 932
----------	----------



LIRL Rwy 5-23 ①  
SHERIDAN, INDIANA  
Amdt 1 19MAY22

Procedure NA for arrivals at CLANG on V14-192-210 southwest bound.



1800	2700	BROOG	4 NM Holding Pattern	
↑	↷	✧		
ODDDS 2.6 NM to RWY 23		GOEAR	BROOG	
RWY 23		3.00° TCH 50	052° → 4000	
1800		2700	← 232° 2700	
2.6 NM		2.8 NM	4.6 NM	
CATEGORY	A	B	C	D
LNAV MDA	1340-1	408 (500-1)	1340-1½ 408 (500-1½)	NA
<b>☑</b> CIRCLING	1400-1 464 (500-1)	1420-1 484 (500-1)	1500-1½ 564 (600-1½)	NA

SHERIDAN, INDIANA

AL-6252 (FAA)

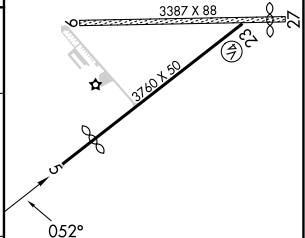
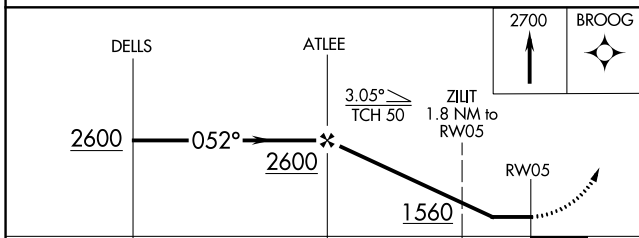
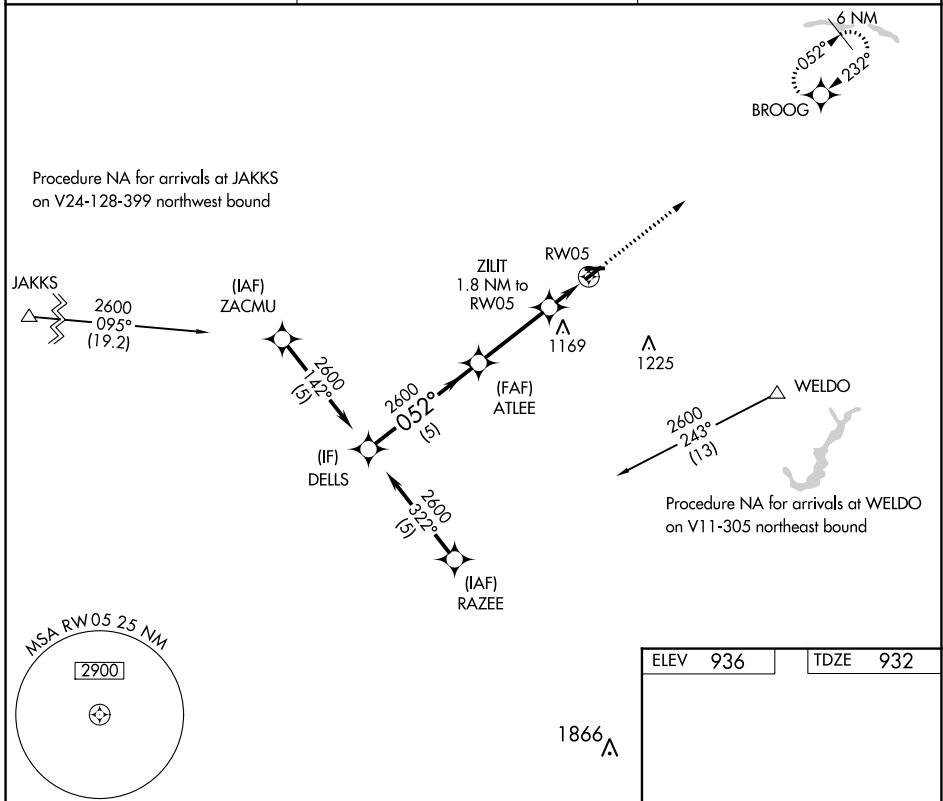
23278

APP CRS	Rwy Idg	<b>3110</b>
<b>052°</b>	TDZE	<b>932</b>
	Apt Elev	<b>936</b>

# RNAV (GPS) RWY 5

SHERIDAN (5I4)

RNP APCH.		MISSED APPROACH: Climb to 2700 direct BROOG and hold.
<b>NA</b>	Circling NA to Rws 9 and 27. Procedure NA at night. Rwy 5 helicopter visibility reduction below 1 SM NA. Use Indianapolis Exec altimeter setting.	
TYQ AWOS-3PT <b>120.725</b>	INDIANAPOLIS APP CON <b>124.65 317.8</b>	UNICOM <b>123.075 (CTAF) 0</b>



CATEGORY	A	B	C	D
LNNAV MDA	1400-1	468 (500-1)	1400-1 $\frac{3}{8}$ 468 (500-1 $\frac{3}{8}$ )	NA
<b>CIRCLING</b>	1460-1 524 (600-1)	1480-1 544 (600-1)	1500-1 $\frac{1}{2}$ 564 (600-1 $\frac{1}{2}$ )	NA

LIRL Rwy 5-23 0

SHERIDAN, INDIANA  
Orig-C 08OCT20

40°11'N-86°13'W

# RNAV (GPS) RWY 5

SHERIDAN (5I4)

EC-2, 22 FEB 2024 to 21 MAR 2024

EC-2, 22 FEB 2024 to 21 MAR 2024