

WAAS CH 42733 W18A	APP CRS 181°	Rwy Idg TDZE Apt Elev	4021 219 219
--	------------------------	-----------------------------	---

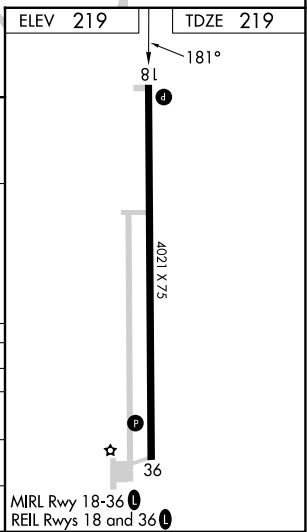
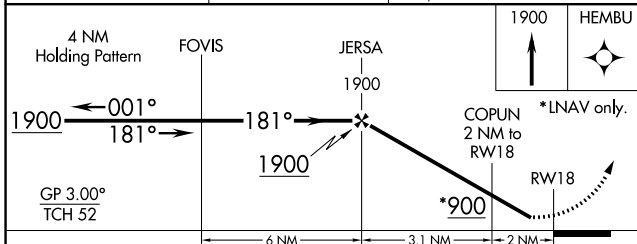
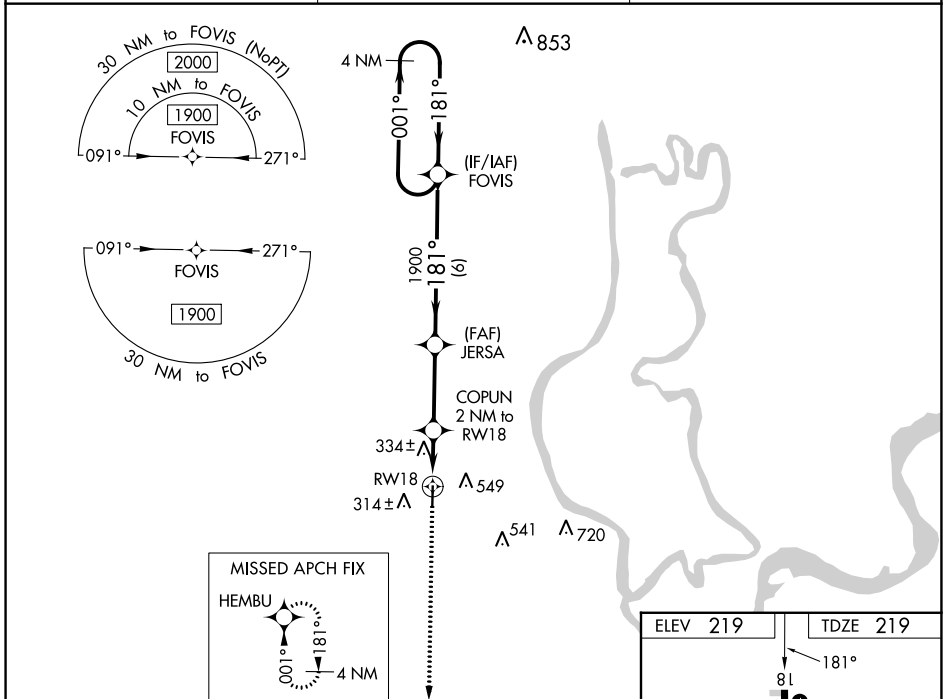
RNAV (GPS) RWY 18

MARIANNA/LEE COUNTY-STEVE EDWARDS FLD (6M7)

Baro-VNAV NA. DME/DME RNP-0.3 NA. Helicopter visibility reduction below 1 SM NA.
Rwy 18 Straight-in and Circling Minimums NA at night. Use Tunica altimeter setting, when not available use West Memphis altimeter setting and increase all DA 25 feet and all MDA 40 feet, increase LPV all Cats and LNAV/VNAV all Cats visibility 1/8 mile and Circling Cat C visibility 1/4 mile.

MISSED APPROACH:
 Climb to 1900 direct HEMBU and hold.

UTA AWOS-3 118.075	MEMPHIS CENTER 135.3 335.8	UNICOM 122.8 (CTAF)
------------------------------	--------------------------------------	-------------------------------



CATEGORY	A	B	C	D
LPV DA	538-1	319 (400-1)		NA
LNAV/VNAV DA	531-1	312 (400-1)		NA
LNAV MDA	660-1	441 (500-1)	660-1 1/8 441 (500-1 1/8)	NA
CIRCLING	920-1	701 (800-1)	920-2 701 (800-2)	NA

SC-1, 22 FEB 2024 to 21 MAR 2024

SC-1, 22 FEB 2024 to 21 MAR 2024

WAAS CH 69433 W36A	APP CRS 001°	Rwy Idg TDZE Apt Elev	4021 219 219
--	------------------------	-----------------------------	---

RNAV (GPS) RWY 36

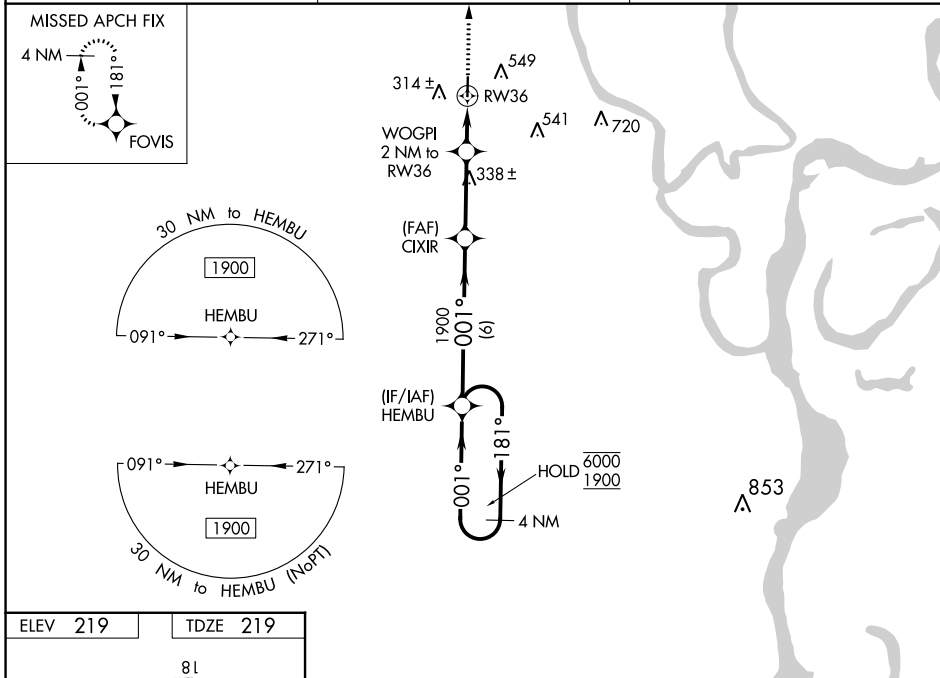
MARIANNA/LEE COUNTY-STEVE EDWARDS FLD (6M7)

RNP APCH

NA Rwy 36 helicopter visibility reduction below 3/4 SM NA. Baro-VNAV NA. Use Tunica altimeter setting; when not received, use West Memphis altimeter setting and increase LPV DA to 555 feet; LNAV/VNAV DA to 666 feet and all MDA 40 feet; increase Circling Cat C visibility 1/4 SM.

MISSED APPROACH: Climb to 1900 direct FOVIS and hold.

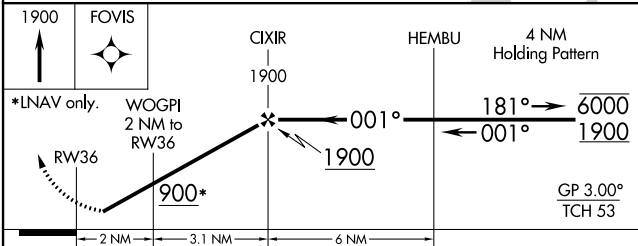
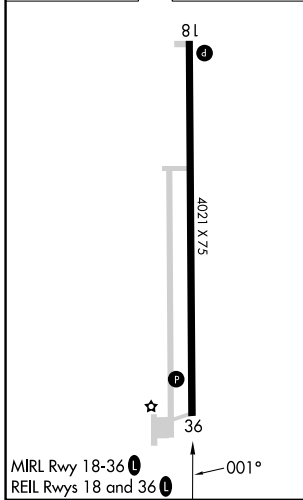
UTA AWOS-3 118.075	MEMPHIS CENTER 135.3 335.8	UNICOM 122.8 (CTAF)
------------------------------	--------------------------------------	-------------------------------



SC-1, 22 FEB 2024 to 21 MAR 2024

SC-1, 22 FEB 2024 to 21 MAR 2024

ELEV 219	TDZE 219
----------	----------



CATEGORY	A	B	C	D
LPV DA	527-1		308 (400-1)	NA
LNAV/VNAV DA	638-1 3/8		419 (500-1 3/8)	NA
LNAV MDA	660-1	441 (500-1)	660-1 3/8 441 (500-1 3/8)	NA
C CIRCLING	920-1	701 (800-1)	920-2 701 (800-2)	NA

RNAV (GPS) RWY 36