

WAAS CH 77630 W31A	APP CRS 308°	Rwy Idg TDZE Apt Elev	3799 2169 2175
--	------------------------	-----------------------------	---

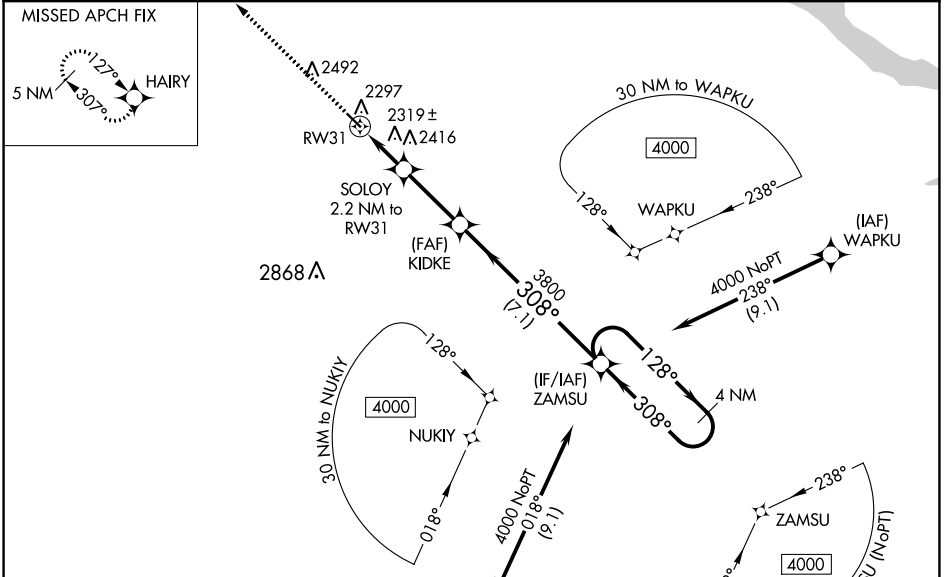
RNAV (GPS) RWY 31

GREGORY MUNI-FLYNN FLD (9D1)

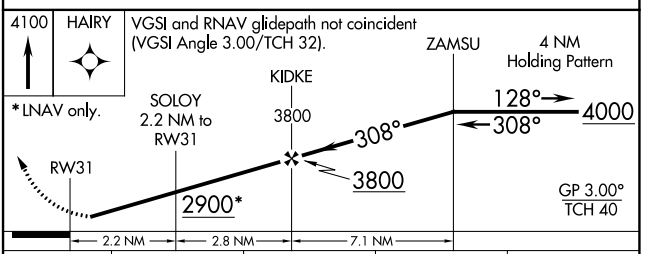
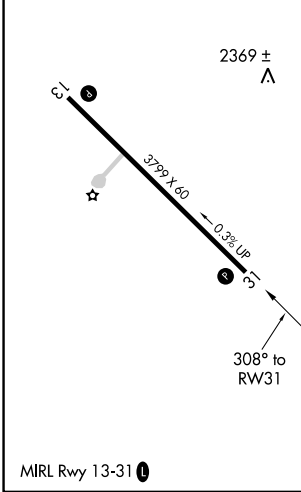
NA Helicopter visibility reduction below 1 SM NA. When VGSI inoperative, Circling Rwy 13 NA at night. Baro-VNAV NA. When VGSI inoperative, Straight-in/Circling Rwy 31 procedure NA at night. DME/DME RNP-0.3 NA. Use Winner altimeter setting; when not received use Ainsworth altimeter setting and increase all DA 95 feet and all MDA 100 feet and increase LPV all Cats visibility ¼ SM, LNAV/VNAV all Cats visibility ⅓ SM, LNAV Cat C and Circling Cat C visibility ¼ SM.

MISSED APPROACH: Climb to 4100 direct HAIRY and hold.

ICR ASOS 126.775	MINNEAPOLIS CENTER 125.1 269.1	GCO 121.725	AUNICOM 122.8 (CTAF)
----------------------------	--	-----------------------	--------------------------------



ELEV 2175	TDZE 2169
-----------	-----------



CATEGORY	A	B	C	D
LPV DA	2489-1 1/8	320 (400-1 1/8)		NA
LNAV/VNAV DA	2709-1 7/8	540 (600-1 7/8)		NA
LNAV MDA	2640-1	471 (500-1)	2640-1 3/8 471 (500-1 3/8)	NA
CIRCLING	2700-1 525 (600-1)	2780-1 605 (700-1)	2880-2 705 (800-2)	NA

NC-1, 22 FEB 2024 to 21 MAR 2024

NC-1, 22 FEB 2024 to 21 MAR 2024