

WAAS CH 77742 W18A	APP CRS 182°	Rwy Idg TDZE Apt Elev	4300 1599 1607
--	------------------------	-----------------------------	---

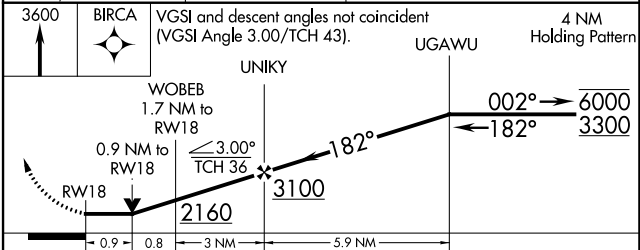
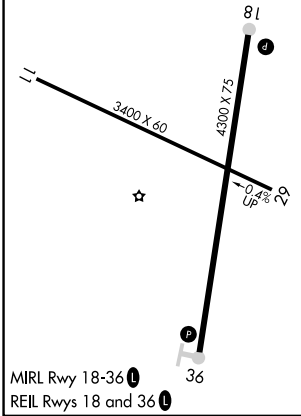
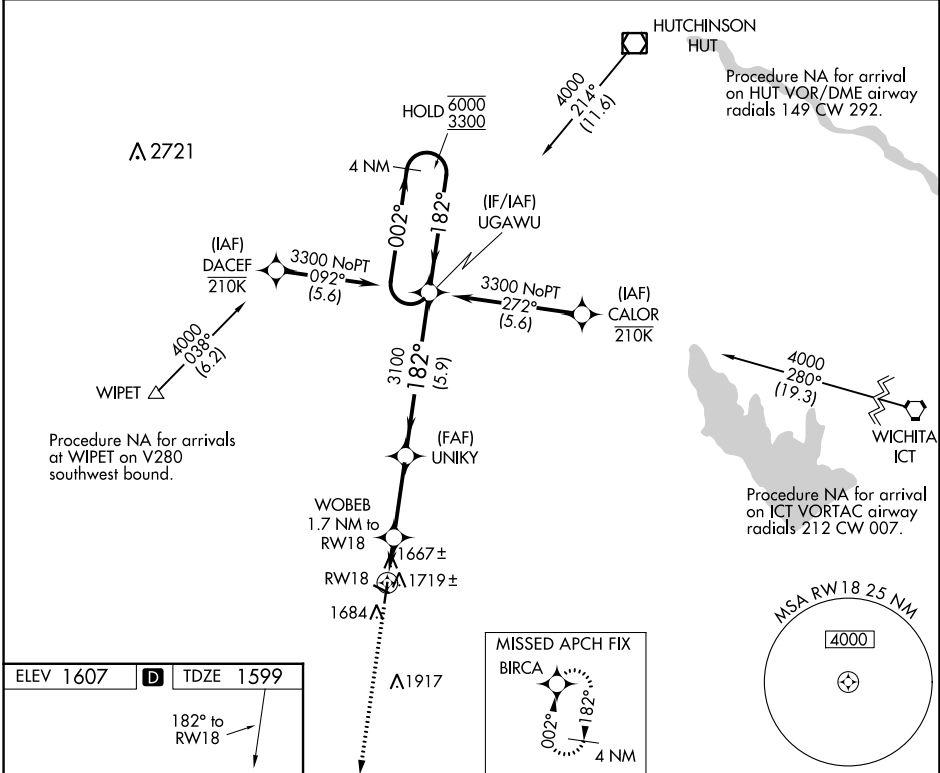
RNAV (GPS) RWY 18

KINGMAN/CLYDE CESSNA FLD (9K8)

RNP APCH.
 ▽ Rwy 18 helicopter visibility reduction below $\frac{3}{4}$ SM NA.
 Circling Rwy 11, 29 NA at night.

MISSED APPROACH: Climb to 3600
 direct BIRCA and hold.

AWOS-3PT 119.325	WICHITA APP CON 125.5 306.2	UNICOM 122.8 (CTAF) 0
----------------------------	---------------------------------------	--



CATEGORY	A	B	C	D
LP MDA	1920-1 321 (400-1)			NA
LNAV MDA	1980-1 381 (400-1)	1980-1½ 381 (400-1½)		NA
CIRCLING	2040-1 433 (500-1)	2060-1 453 (500-1)	2160-1½ 553 (600-1½)	NA

NC-2, 22 FEB 2024 to 21 MAR 2024

NC-2, 22 FEB 2024 to 21 MAR 2024

WAAS CH 82042 W36A	APP CRS 002°	Rwy Idg TDZE Apt Elev	4300 1597 1607
--	------------------------	-----------------------------	---

RNAV (GPS) RWY 36

KINGMAN/CLYDE CESSNA FLD (9K8)

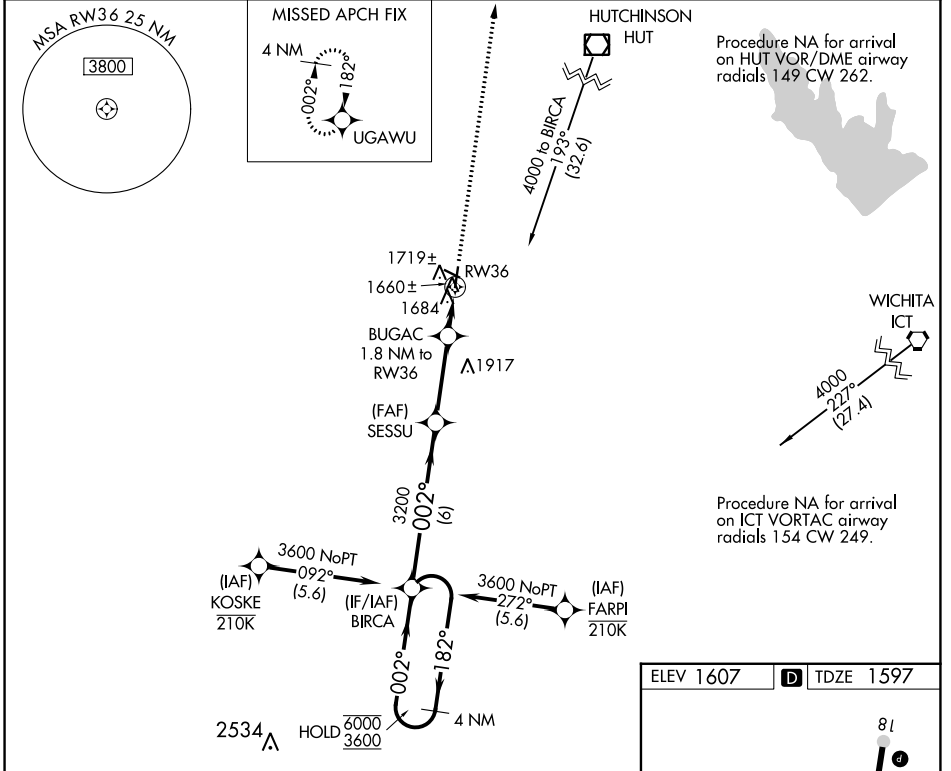
RNP APCH.
 ▼ Rwy 36 helicopter visibility reduction below 3/4 SM NA.
 Circling Rwy 11, 29 NA at night.

MISSED APPROACH: Climb to 3300
 direct UGAWU and hold.

AWOS-3PT
119.325

WICHITA APP CON
125.5 306.2

UNICOM
122.8 (CTAF)

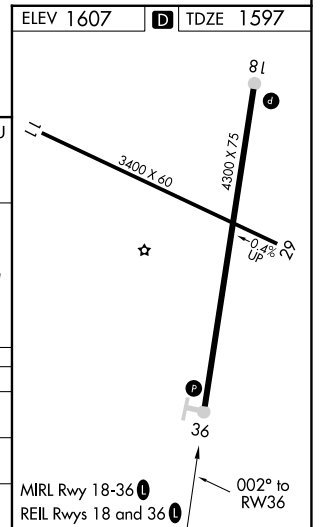
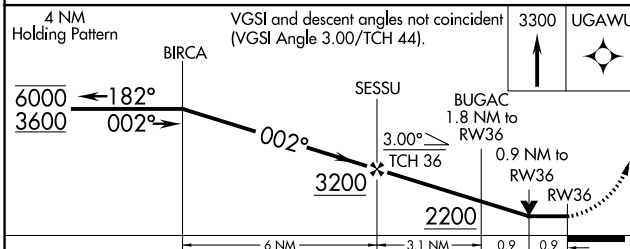


Procedure NA for arrival on HUT VOR/DME airway radials 149 CW 262.

Procedure NA for arrival on ICT VORTAC airway radials 154 CW 249.

NC-2, 22 FEB 2024 to 21 MAR 2024

NC-2, 22 FEB 2024 to 21 MAR 2024



4 NM Holding Pattern	VGSi and descent angles not coincident (VGSi Angle 3.00/TCH 44).			3300 UGAWU
BIRCA	SESSU	BUGAC 1.8 NM to RW36	0.9 NM to RW36	RW36
6000 ← 182°	3600 → 002°	3200	2200	
6 NM		3.1 NM	0.9	0.9
CATEGORY	A	B	C	D
LP MDA	1920-1 323 (400-1)			NA
LNAV MDA	1980-1 383 (400-1)	1980-1 383 (400-1 1/8)		NA
CIRCLING	2040-1 433 (500-1)	2060-1 453 (500-1)	2160-1 553 (600-1 1/2)	NA