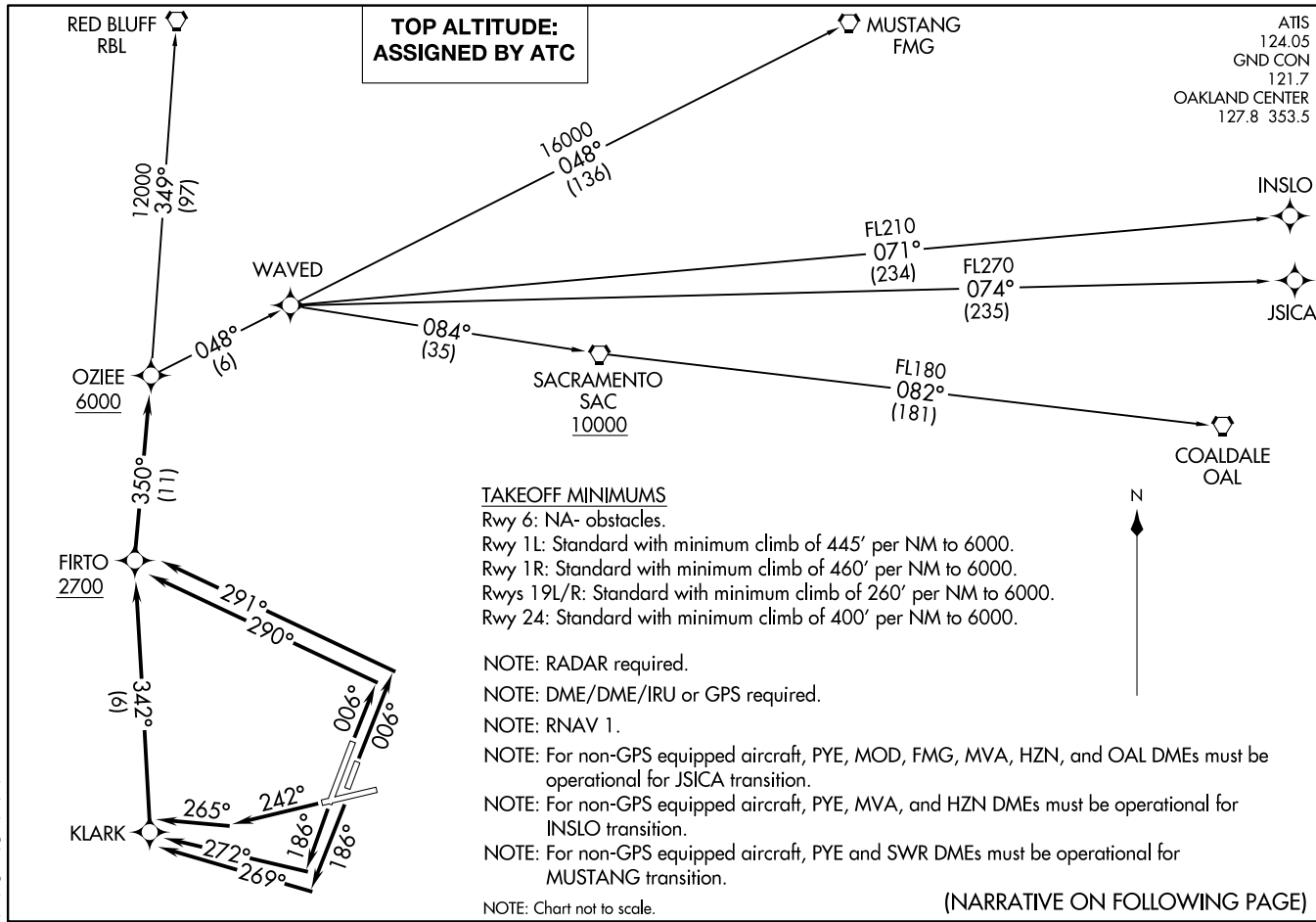


0ZIEE FOUR DEPARTURE (RNAV)  
 (0ZIEE4,0ZIEE) 100CT19

NAPA, CALIFORNIA  
 NAPA COUNTY (ATP)

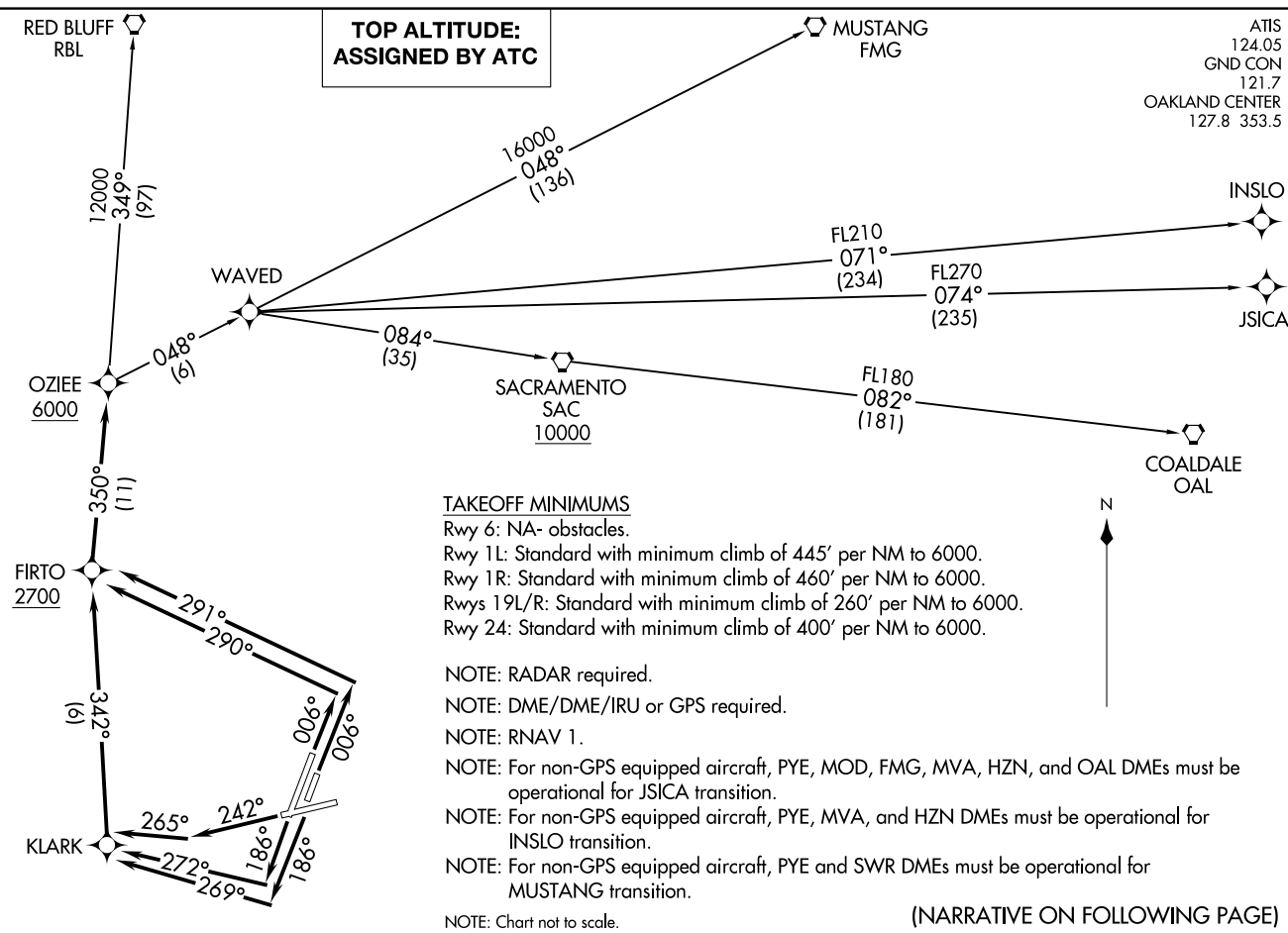


(0ZIEE4,0ZIEE) 19288  
 0ZIEE FOUR DEPARTURE (RNAV)

AL-281 (FAA)

NAPA COUNTY (ATP)  
 NAPA, CALIFORNIA

ATIS 124.05  
 GND CON 121.7  
 OAKLAND CENTER 127.8 353.5





DEPARTURE ROUTE DESCRIPTION

TAKEOFF RUNWAY 1L: Climb on heading 006° to intercept course 290° to FIRTO at or above 2700, then on track 350° to OZIEE at or above 6000, thence. . . .

TAKEOFF RUNWAY 1R: Climb on heading 006° to intercept course 291° to FIRTO at or above 2700, then on track 350° to OZIEE at or above 6000, thence. . . .

TAKEOFF RUNWAY 19L: Climb on heading 186° to intercept course 269° to KLARK, then on track 342° to FIRTO at or above 2700, then on track 350° to OZIEE at or above 6000, thence. . . .

TAKEOFF RUNWAY 19R: Climb on heading 186° to intercept course 272° to KLARK, then on track 342° to FIRTO at or above 2700, then on track 350° to OZIEE at or above 6000, thence. . . .

TAKEOFF RUNWAY 24: Climb on heading 242° to intercept course 265° to KLARK, then on track 342° to FIRTO at or above 2700, then on track 350° to OZIEE at or above 6000, thence. . . .

. . . .on (transition). Maintain ATC assigned altitude. Expect filed altitude 10 minutes after departure.

COALDALE TRANSITION (OZIEE4.OAL)

INSLO TRANSITION (OZIEE4.INSLO)

JSICA TRANSITION (OZIEE4.JSICA)

MUSTANG TRANSITION (OZIEE4.FMG)

RED BLUFF TRANSITION (OZIEE4.RBL)

SW-2, 22 FEB 2024 to 21 MAR 2024

SW-2, 22 FEB 2024 to 21 MAR 2024