

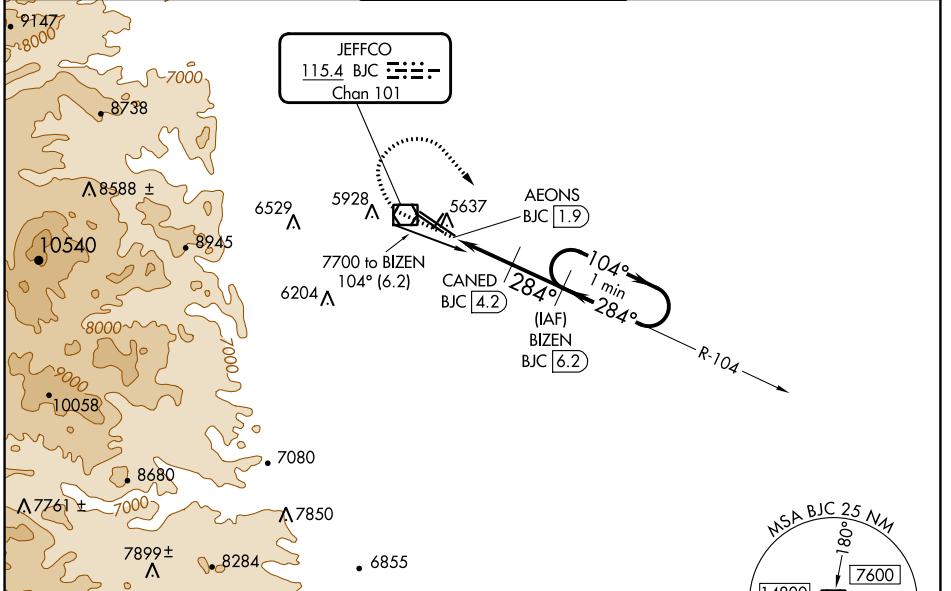
VOR/DME BJC 115.4 Chan 101	APP CRS 284°	Rwy Idg	30L	30R
		TDZE	7002	9000
		Apt Elev	5628	5599
			5673	5673

VOR/DME RWY 30L/R

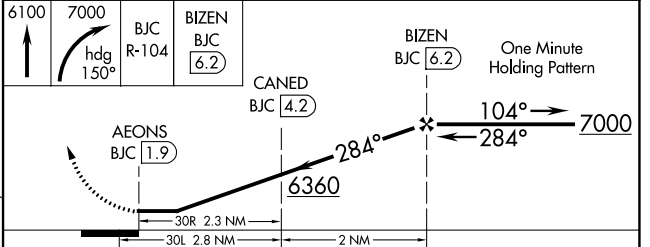
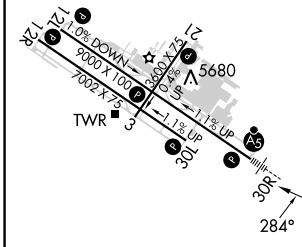
ROCKY MOUNTAIN METRO (BJC)

<p>NA</p> <p>When local altimeter setting not received, use Denver Intl altimeter setting and increase all MDA 100 feet. Increase S-30L Cats C/D visibility to 1 mile and Circling Cat C to 2 1/4 mile. For inoperative MALSRS, increase S-30R all Cats visibility to 1 mile. For inoperative MALSRS, when using Denver Intl altimeter setting, increase S-30R Cats C/D visibility to 1 1/8 mile.</p>	<p>MALSRS Rwy 30R</p>	<p>MISSED APPROACH: Climb to 6100 then climbing right turn to 7000 on heading 150° and on BJC VOR/DME R-104 to BIZEN/BJC 6.2 DME and hold.</p>
--	-----------------------	--

ATIS 126.25	DENVER APP CON 125.12 263.02	METRO TOWER * 118.6(CTAF) 233.7	GND CON 121.7	CLNC DEL 132.6
-----------------------	--	---	-------------------------	--------------------------



ELEV 5673	D TDZE 30L 5628
	TDZE 30R 5599



CATEGORY	A	B	C	D
S-30R	5920-1/2	321 (300-1/2)	5920-3/4	321 (300-3/4)
S-30L	5920-1	292 (300-1)	5920-7/8	292 (300-7/8)
C CIRCLING	6180-1 507 (600-1)	6240-1 567 (600-1)	6360-2 687 (700-2)	6860-3 1187 (1200-3)

HIRL Rwy 12L-30R **L**
MIRL Rwy 3-21 and 12R-30L **L**
REL Rwy 12L, 12R and 30L **L**

SW-1, 22 FEB 2024 to 21 MAR 2024

SW-1, 22 FEB 2024 to 21 MAR 2024