

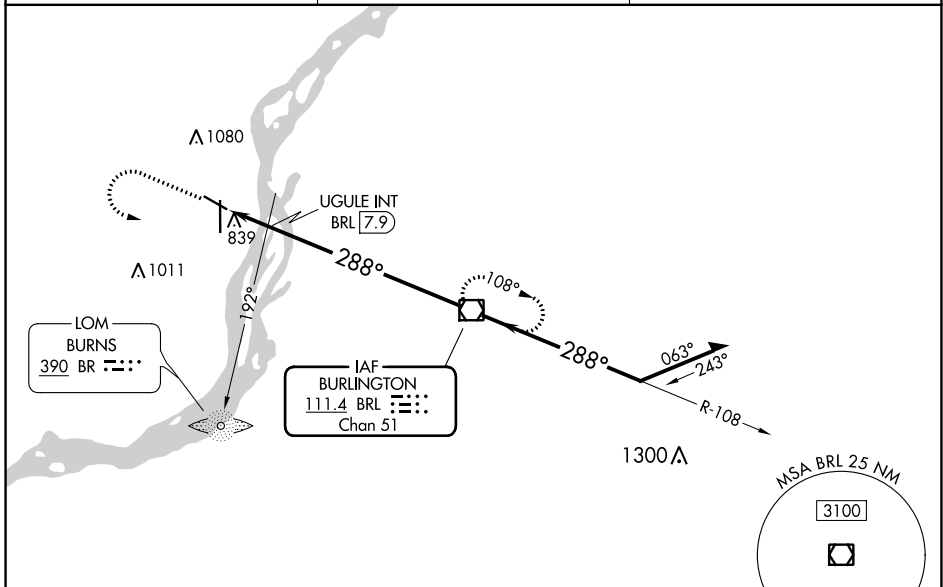
VOR/DME BRL <b>111.4</b> Chan 51	APP CRS <b>288°</b>	Rwy Idg TDZE Apt Elev	<b>4850</b> <b>697</b> <b>698</b>
--	------------------------	-----------------------------	---

**VOR RWY 30**  
SOUTHEAST IOWA RGNL (B.R.L.)

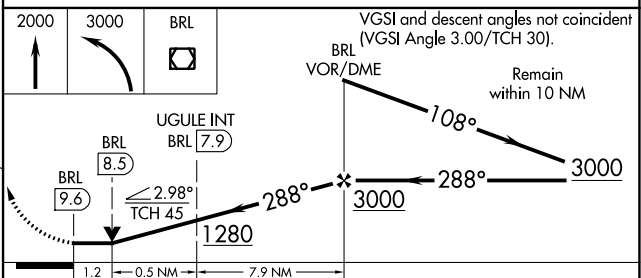
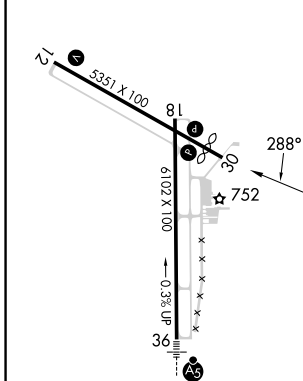
**⚠** Rwy 30 helicopter visibility reduction below 3/4 SM NA.

MISSED APPROACH: Climb to 2000 then climbing left turn to 3000 direct BRL VOR/DME and hold.

ASOS <b>118.025</b>	CHICAGO CENTER <b>135.6 370.95</b>	UNICOM <b>123.0 (CTAF)</b> <b>📻</b>
------------------------	---------------------------------------	--



ELEV 698	<b>D</b>	TDZE 697
----------	----------	----------



CATEGORY	A	B	C	D
S-30	1280-1	583 (600-1)	1280-1 <sup>3</sup> / <sub>4</sub> 583 (600-1 <sup>3</sup> / <sub>4</sub> )	NA
<b>C</b> CIRCLING	1280-1	582 (600-1)	1380-2 682 (700-2)	NA
UGULE FIX MINIMUMS				
S-30	1100-1	403 (500-1)	1100-1 <sup>1</sup> / <sub>8</sub> 403 (500-1 <sup>1</sup> / <sub>8</sub> )	NA
<b>C</b> CIRCLING	1180-1	482 (500-1)	1380-2 682 (700-2)	NA

MIRL Rwy 12-30 **📻**  
HIRL Rwy 18-36 **📻**  
REIL Rwys 12, 18 and 30 **📻**

FAF to MAP 9.6 NM

Knots	60	90	120	150	180
Min:Sec	9:36	6:24	4:48	3:50	3:12

NC-3, 22 FEB 2024 to 21 MAR 2024

NC-3, 22 FEB 2024 to 21 MAR 2024