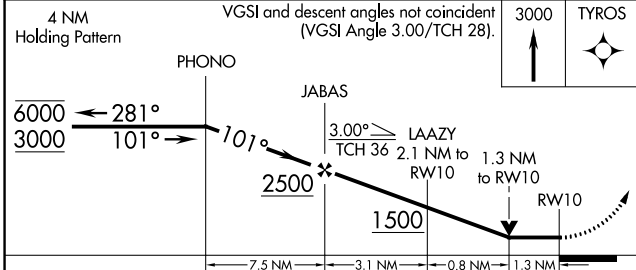
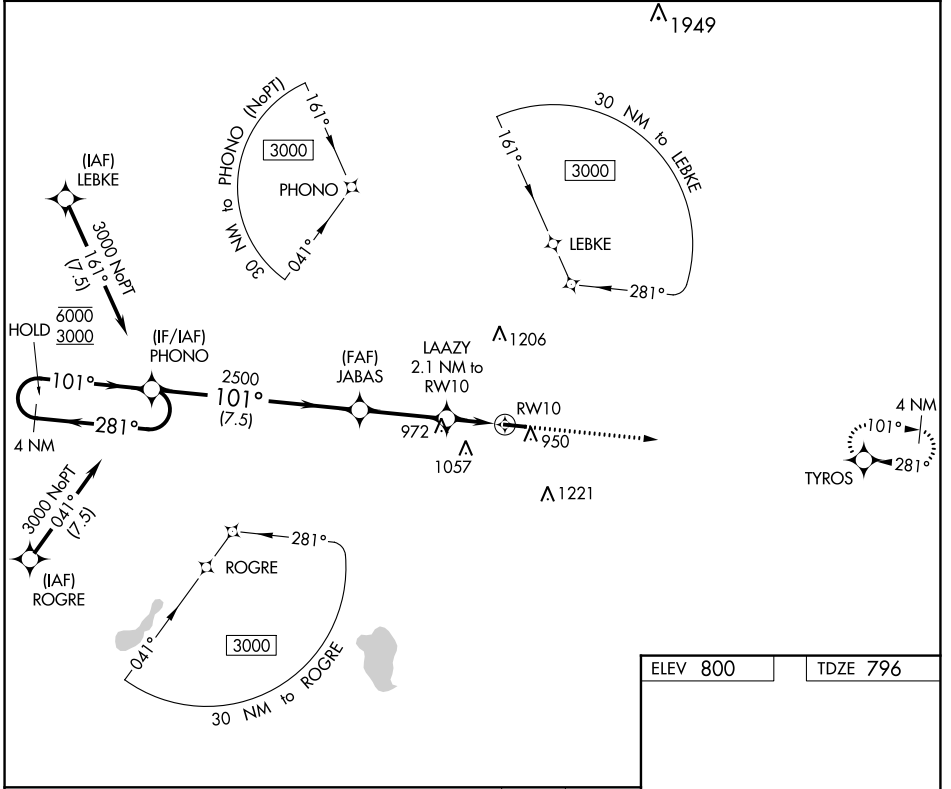


APP CRS <b>101°</b>	Rwy Idg <b>4400</b> TDZE <b>796</b> Apt Elev <b>800</b>
------------------------	---

# RNAV (GPS) RWY 10

PLYMOUTH MUNI (C65)

RNP APCH.	MISSED APPROACH: Climb to 3000 direct TYROS and hold.	
Circling to Rwy 28 NA at night. Rwy 10 helicopter visibility reduction below 3/4 SM NA.		
AWOS-3 <b>133.025</b>	SOUTH BEND APP CON * <b>132.05 257.8</b>	UNICOM <b>122.975 (CTAF) 0</b>



ELEV 800	TDZE 796
----------	----------

Diagram details:
 

- RWY 10:** 4400 x 75, 101° heading.
- RWY 28:** 822, 101° heading.
- MIRA:** MIRA Rwy 10-28.
- REIL:** REIL Rwy 10 and 28.

CATEGORY	A	B	C	D
LNVA MDA	1240-1	444 (500-1)	1240-1 3/8 444 (500-1 3/8)	NA
CIRCLING	1280-1 480 (500-1)	1360-1 560 (600-1)	1540-2 740 (800-2)	NA

EC-2, 22 FEB 2024 to 21 MAR 2024

EC-2, 22 FEB 2024 to 21 MAR 2024

WAAS CH <b>90238</b> <b>W28A</b>	APP CRS <b>281°</b>	Rwy Idg TDZE Apt Elev	<b>4103</b> <b>796</b> <b>800</b>
--	------------------------	-----------------------------	---

# RNAV (GPS) RWY 28

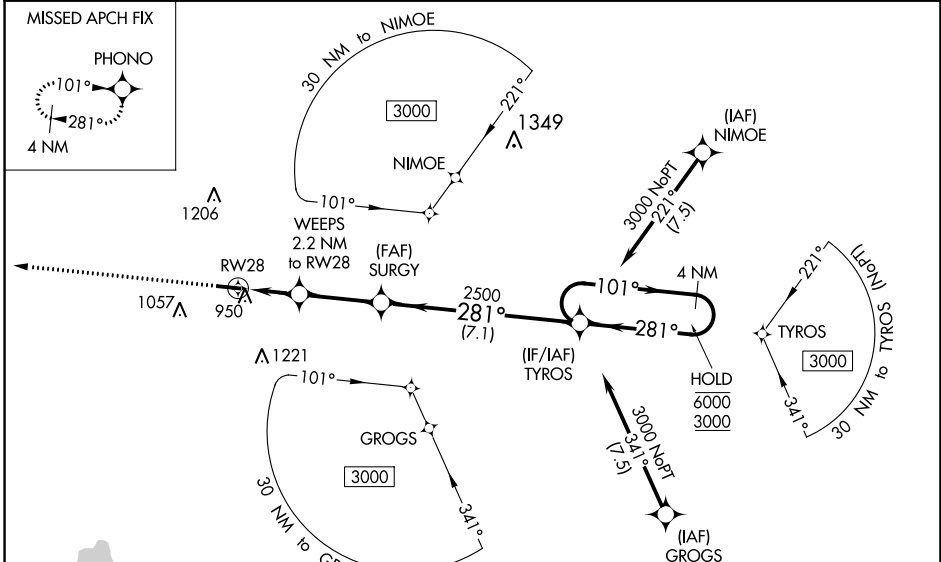
PLYMOUTH MUNI (C65)

RNP APCH - GPS.

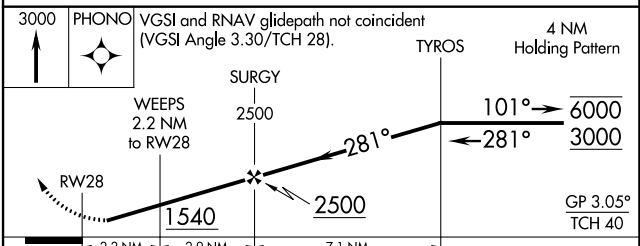
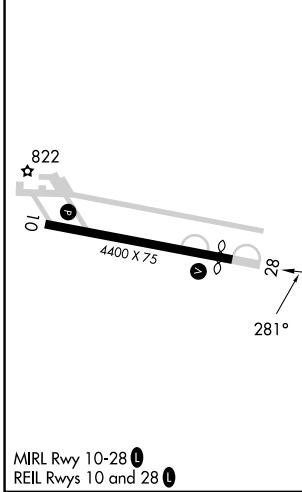
▼ Baro-VNAV NA when using South Bend altimeter setting. Rwy 28 helicopter visibility reduction below 1 SM NA. For uncompensated Baro-VNAV systems, LNAV/VNAV NA below -16°C or above 54°C. When local altimeter setting not received, use South Bend altimeter setting and increase LPV DA to 1154 feet and visibility all Cats ¼ SM; LNAV/VNAV DA to 1240 feet and visibility all Cats ¼ SM, increase all MDAs 60 feet and LNAV visibility Cat C ½ SM, and Circling visibility Cat C ¼ SM. Straight-in Rwy 28 NA at night, Circling Rwy 28 NA at night.

MISSED APPROACH: Climb to 3000 direct PHONO and hold.

AWOS-3 <b>133.025</b>	SOUTH BEND APP CON * <b>132.05 257.8</b>	UNICOM <b>122.975 (CTAF) ①</b>
--------------------------	---	-----------------------------------



ELEV 800	TDZE 796
----------	----------



CATEGORY	A	B	C	D
LPV DA	1103-1		307 (400-1)	NA
LNAV/VNAV DA	1189-1½		393 (400-1½)	NA
LNAV MDA	1260-1	464 (500-1)	1260-1⅜ 464 (500-1⅜)	NA
<b>C</b> CIRCLING	1280-1 480 (500-1)	1360-1 560 (600-1)	1540-2 740 (800-2)	NA

PLYMOUTH, INDIANA  
REIL Rwy 10-28 ①  
REIL Rwy 10 and 28 ①

41°22'N-86°18'W

PLYMOUTH MUNI (C65)  
**RNAV (GPS) RWY 28**

EC-2, 22 FEB 2024 to 21 MAR 2024

EC-2, 22 FEB 2024 to 21 MAR 2024