

APP CRS	Rwy Idg	<b>3498</b>
<b>142°</b>	TDZE	<b>1610</b>
	Apt Elev	<b>1610</b>

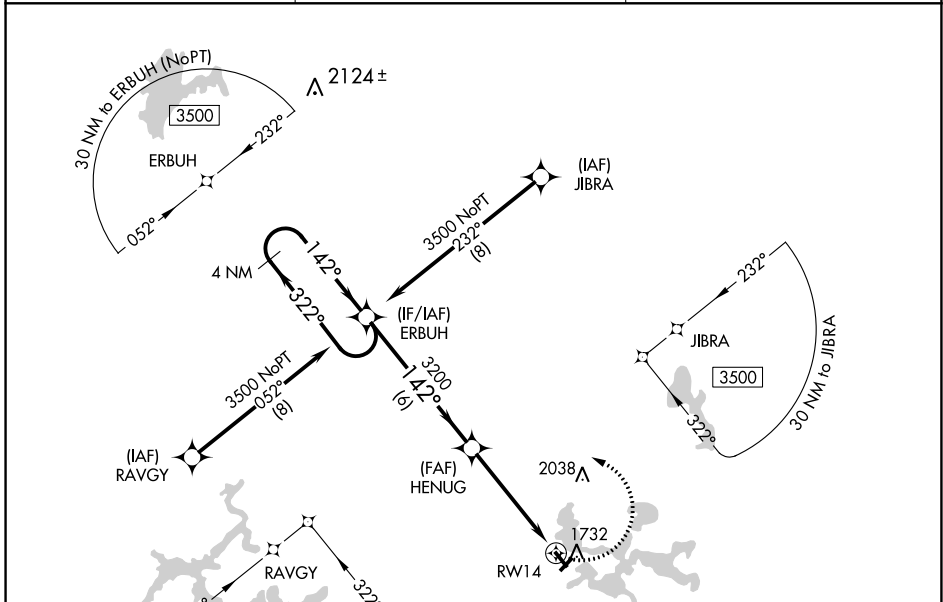
# RNAV (GPS) RWY 14

MANITOWISH WATERS (D25)

**▼** Circling NA to Rws 4 and 22. DME/DME RNP-0.3 NA. Procedure NA at night. Rwy 14 helicopter visibility reduction below 1 SM NA. When local altimeter setting not received, use Minocqua-Woodruff altimeter setting; increase all MDA 40 feet, increase LNAV Cat C visibility 1/8 mile and Circling Cat C visibility 1/4 mile.

**MISSED APPROACH:**  
Climbing left turn to 3500  
direct ERBUH and hold.

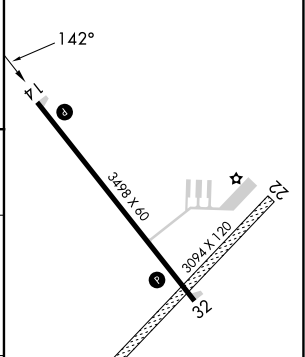
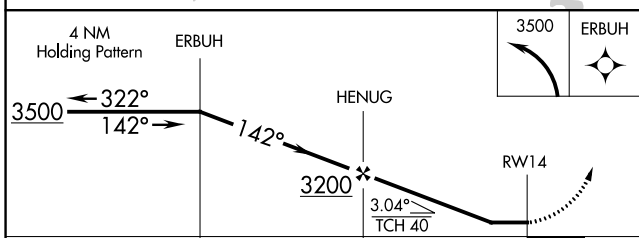
AWOS-3PT <b>118.175</b>	MINNEAPOLIS CENTER <b>133.65 281.5</b>	UNICOM <b>122.8 (CTAF) ①</b>
----------------------------	---	---------------------------------



EC-3, 22 FEB 2024 to 21 MAR 2024

EC-3, 22 FEB 2024 to 21 MAR 2024

ELEV 1610	TDZE 1610
-----------	-----------



CATEGORY	A	B	C	D
LNAV MDA	2100-1	490 (500-1)	2100-1 3/8 490 (500-1 3/8)	NA
<b>C</b> CIRCLING	2100-1	490 (500-1)	2340-2 730 (800-2)	NA

REIL Rws 14 and 32 ①  
MIRL Rwy 14-32 ①

APP CRS <b>322°</b>	Rwy Idg TDZE Apt Elev	<b>3498</b> <b>1610</b> <b>1610</b>
------------------------	-----------------------------	---

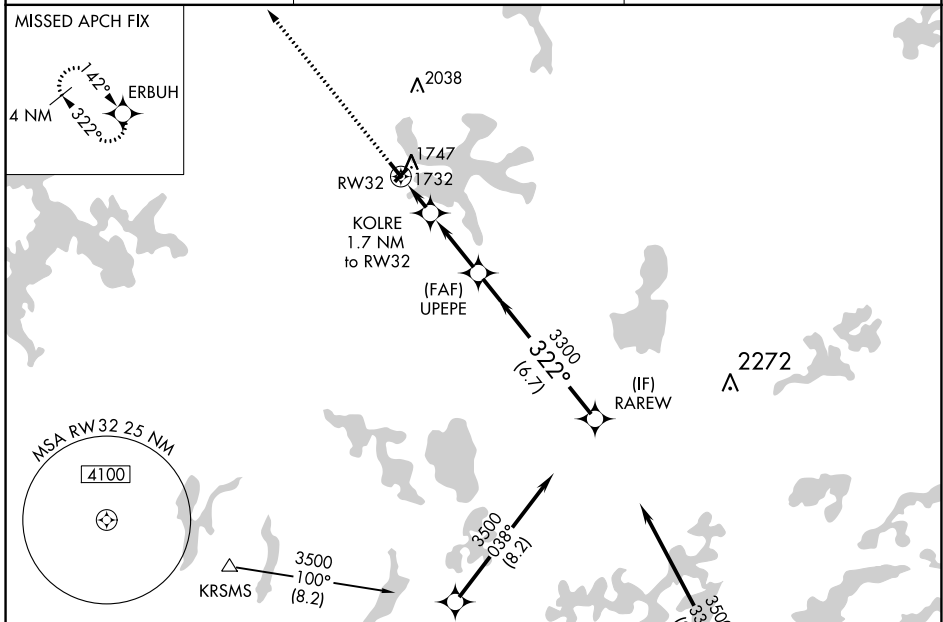
# RNAV (GPS) RWY 32

MANITOWISH WATERS (D25)

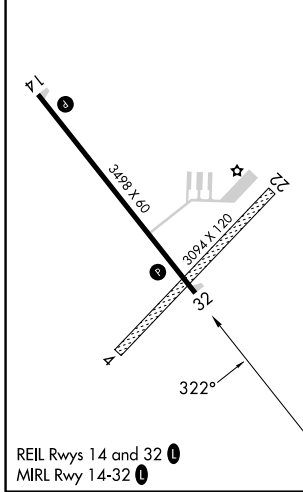
**⚠** Circling NA to Rws 4 and 22. DME/DME RNP-0.3 NA. Procedure NA at night. Rwy 32 helicopter visibility reduction below 1 SM NA. When local altimeter setting not received, use Minocqua-Woodruff altimeter setting and increase all MDA 40 feet and LNAV Cat C visibility 1/8 mile and Circling Cat C visibility 1/4 mile.

**MISSED APPROACH:**  
Climb to 3500 direct ERBUH and hold.

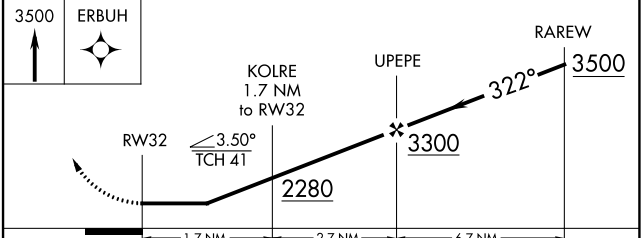
<b>AWOS-3PT</b> <b>118.175</b>	<b>MINNEAPOLIS CENTER</b> <b>133.65 281.5</b>	<b>UNICOM</b> <b>122.8 (CTAF)</b> <b>📻</b>
-----------------------------------	--	---



ELEV 1610	TDZE 1610
-----------	-----------



Procedure NA for arrival on RHI VOR/DME airway radials 241 CW 021.



CATEGORY	A	B	C	D
LNAV MDA	2000-1	390 (400-1)	2000-1 1/8 390 (400-1 1/8)	NA
<b>📻</b> CIRCLING	2060-1	450 (500-1)	2340-2 730 (800-2)	NA

EC-3, 22 FEB 2024 to 21 MAR 2024

EC-3, 22 FEB 2024 to 21 MAR 2024