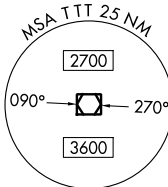


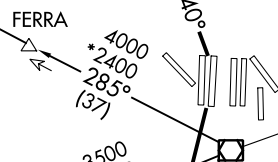
RADAR and DME required.

TOP ALTITUDE:
RWYS 13L/R, 17L/C/R,
18L/R, 35L/C/R,
36L/R: 10000
RWYS 31L/R: 5000

REGIONAL DEP CON
126.475 363.15
D-ATIS DEP
135.925
CLNC DEL
128.25
CPDLC
GND CON
121.65 121.8 (EAST)
121.85 (WEST)
DFW TOWER
126.55 127.5 (EAST)
124.15 134.9 (WEST)



MAVERICK
113.1 TTT
Chan 78



NOTE: PODDE Transition: ATC assigned.
NOTE: Maintain 240K until leaving 5000.
NOTE: PROPS: Expect COYOTE or KINGDOM DEPARTURE.

ABILENE
113.7 ABI
Chan 84

MILLSAP
117.7 MQP
Chan 124

LUBBOCK
109.2 LBB
Chan 29

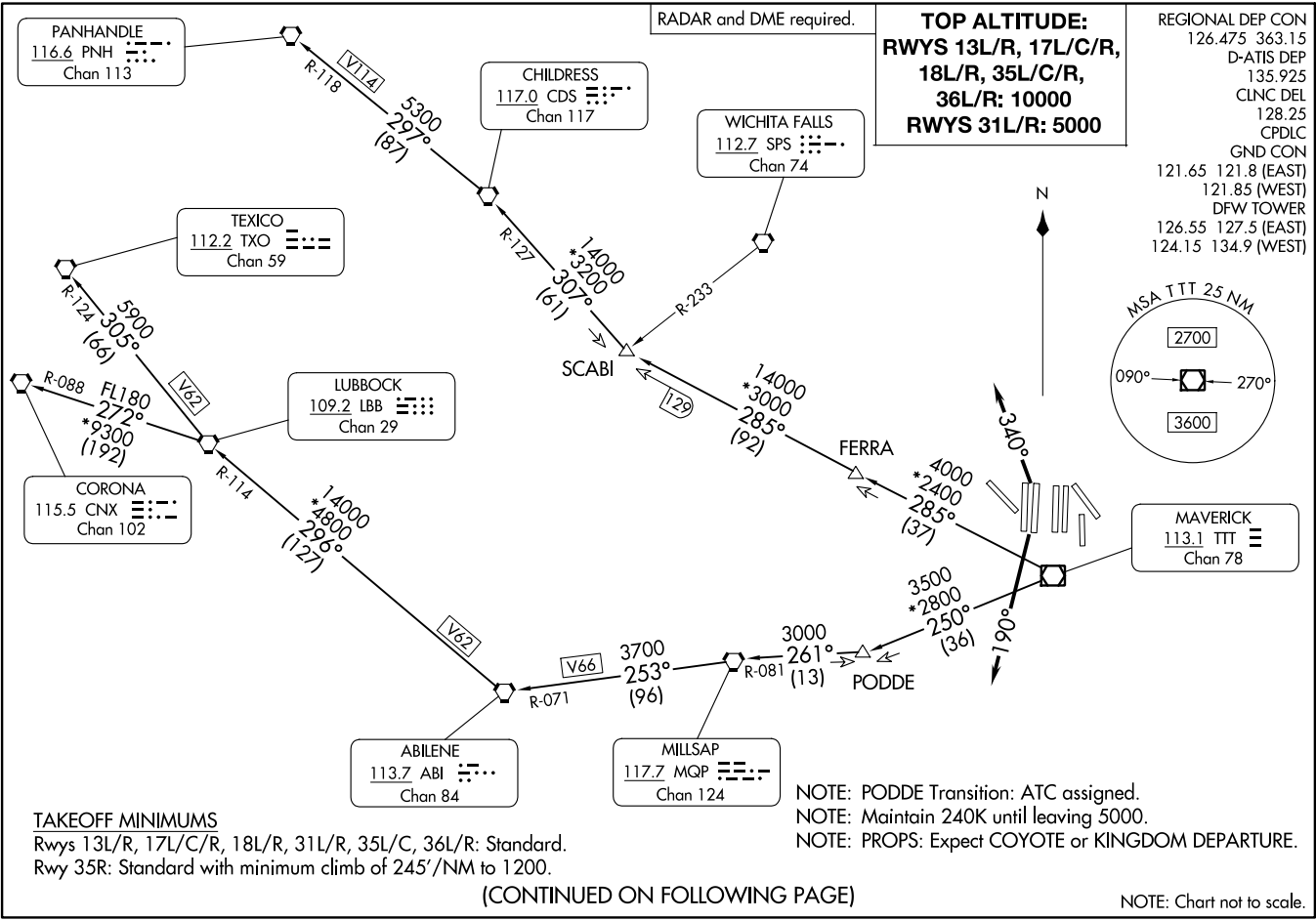
CORONA
115.5 CNX
Chan 102

TEXICO
112.2 TXO
Chan 59

CHILDRESS
117.0 CDS
Chan 117

WICHITA FALLS
112.7 SPS
Chan 74

PANHANDLE
116.6 PNH
Chan 113



TAKEOFF MINIMUMS
Rwys 13L/R, 17L/C/R, 18L/R, 31L/R, 35L/C, 36L/R: Standard.
Rwy 35R: Standard with minimum climb of 245'/NM to 1200.

(CONTINUE ON FOLLOWING PAGE)

NOTE: Chart not to scale.

WORTH ONE DEPARTURE
(WORTH1.TTT) 251AN24
DALLAS-FORT WORTH, TEXAS
DALLAS-FORT WORTH INTL (DFW)

(WORTH1.TTT) 24025
AL-6039 (FAA)
DALLAS-FORT WORTH INTL (DFW)
DALLAS-FORT WORTH, TEXAS

WORTH ONE DEPARTURE



DEPARTURE ROUTE DESCRIPTION

TAKEOFF RUNWAYS 13L/R, 17L/C/R, 35L/C/R: Climb on assigned heading thence. . . .

TAKEOFF RUNWAYS 18L/R: Climb on heading 190°, thence. . . .

TAKEOFF RUNWAYS 36L/R: Climb on heading 340°, thence. . . .

. . . .for RADAR vectors to appropriate route, maintain 10000 and expect filed altitude 10 minutes after departure.

TAKEOFF RUNWAYS 31L/R: Climb on assigned heading and altitude, thence. . . .

. . . .for RADAR vectors to appropriate route, maintain 5000 and expect filed altitude 10 minutes after departure.

ABILENE TRANSITION (WORTH1.ABI): From over TTT VOR/DME on TTT R-250 to PODDE, then on MQP R-081 to MQP VORTAC, then on MQP R-253 and ABI R-071 to ABI VORTAC.

CHILDRESS TRANSITION (WORTH1.CDS): From over TTT VOR/DME on TTT R-285 to SCABI, then on CDS R-127 to CDS VORTAC.

CORONA TRANSITION (WORTH1.CNX): From over TTT VOR/DME on TTT R-250 to PODDE, then on MQP R-081 to MQP VORTAC, then on MQP R-253 and ABI R-071 to ABI VORTAC, then on ABI R-296 and LBB R-114 to LBB VORTAC, then on LBB R-272 and CNX R-088 to CNX VORTAC.

LUBBOCK TRANSITION (WORTH1.LBB): From over TTT VOR/DME on TTT R-250 to PODDE, then on MQP R-081 to MQP VORTAC, then on MQP R-253 and ABI R-071 to ABI VORTAC, then on ABI R-296 and LBB R-114 to LBB VORTAC.

PANHANDLE TRANSITION (WORTH1.PNH): From over TTT VOR/DME on TTT R-285 to SCABI, then on CDS R-127 to CDS VORTAC, then on CDS R-297 and PNH R-118 to PNH VORTAC.

PODDE TRANSITION (WORTH1.PODDE): From over TTT VOR/DME on TTT R-250 to PODDE.

TEXICO TRANSITION (WORTH1.TXO): From over TTT VOR/DME on TTT R-250 to PODDE, then on MQP R-081 to MQP VORTAC, then on MQP R-253 and ABI R-071 to ABI VORTAC, then on ABI R-296 and LBB R-114 to LBB VORTAC, then on LBB R-305 and TXO R-124 to TXO VORTAC.

SC-2, 22 FEB 2024 to 21 MAR 2024

SC-2, 22 FEB 2024 to 21 MAR 2024

WORTH ONE DEPARTURE