

RNAV (RNP) Z RWY 11


GRAND JUNCTION RGNL (GJT)

APP CRS 112°	Rwy Idg TDZE Apt Elev	10503 4836 4861
------------------------	-----------------------------	--

RNP AR APCH - GPS

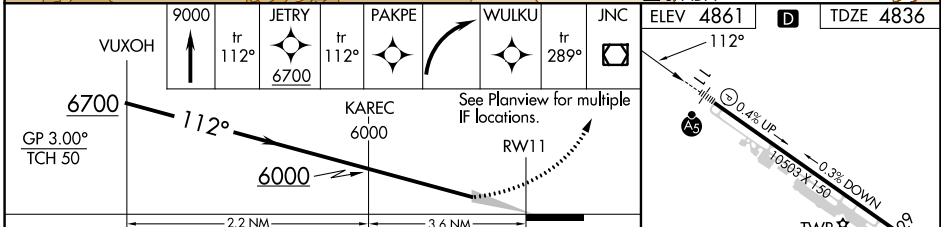
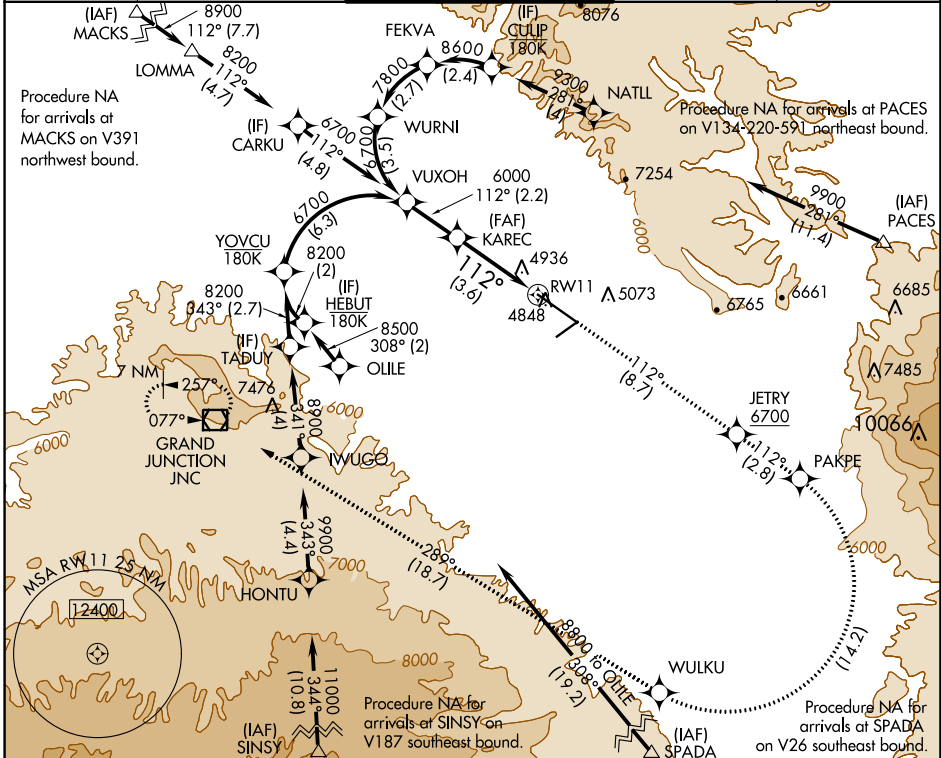
▼ For uncompensated Baro-VNAV systems, procedure NA below -21°C or above 54°C. For inoperative ALS, increase RNP 0.10 all Cats visibility to 1½ SM, and RNP 0.30 all Cats visibility to 1¾ SM.

MALSR



MISSED APPROACH: Climb to 9000 on track 112° to JETRY, cross JETRY at or above 6700, and on track 112° to PAKPE, right turn to WULKU, and on track 289° to JNC VOR/DME and hold.

ATIS 118.55	DENVER APP CON * 119.7 317.4	GRAND JUNCTION TOWER * 118.1 (CTAF) 257.8	GND CON 121.7 257.8	UNICOM 122.95
------------------------------	---	--	--------------------------------------	--------------------------------



CATEGORY	A	B	C	D
RNP 0.10 DA		5257-1¼	421 (400-1¼)	
RNP 0.30 DA		5369-1½	533 (600-1½)	

AUTHORIZATION REQUIRED

VUXOH	9000	↑ tr 112°	JETRY	6700	↑ tr 112°	PAKPE	↑	WULKU	↑	JNC	↑ tr 289°
<p>GP 3.00° TCH 50</p> <p>See Planview for multiple IF locations.</p> <p>RW11</p> <p>2.2 NM</p> <p>3.6 NM</p> <p>ELEV 4861</p> <p>TDZE 4836</p> <p>112°</p> <p>0.4% UP</p> <p>0.3% DOWN</p> <p>10503 X-150</p> <p>TWR 4945</p> <p>1.3% UP</p> <p>5501 X-75</p>											

HIRL Rwy 11-29

MIRL Rwy 4-22

REIL Rws 4, 22 and 29

SW-1, 22 FEB 2024 to 21 MAR 2024

SW-1, 22 FEB 2024 to 21 MAR 2024