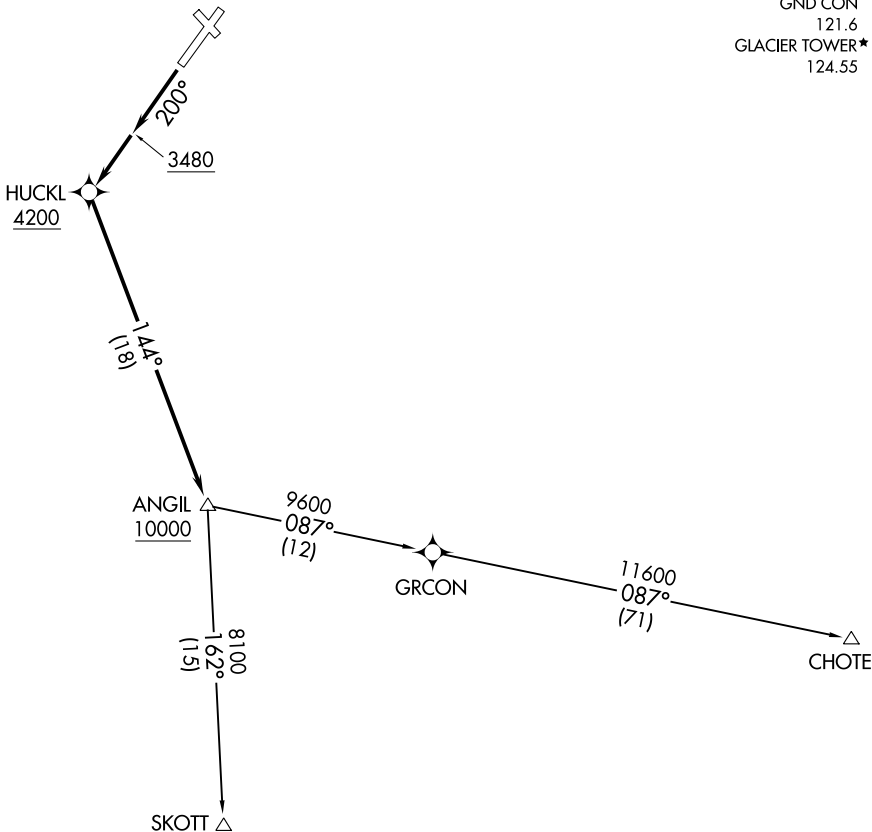


**TOP ALTITUDE:  
ASSIGNED BY ATC**

SALT LAKE CENTER  
127.075 244.875  
ATIS  
132.625  
GND CON  
121.6  
GLACIER TOWER\*  
124.55



NW-1, 22 FEB 2024 to 21 MAR 2024

NW-1, 22 FEB 2024 to 21 MAR 2024

NOTE: GPS required.  
NOTE: RNAV 1.  
NOTE: Chart not to scale.

TAKEOFF MINIMUMS  
Rwys 2, 12, 30: NA - ATC.  
Rwy 20: Standard with minimum climb of 500' per NM to 3480.



DEPARTURE ROUTE DESCRIPTION

TAKEOFF RUNWAY 20: Climb heading 200° to 3480, then climb direct to cross HUCKL at or above 4200, then on track 144° to cross ANGIL at or above 10000, thence. . . .  
. . . .on (transition). Maintain ATC assigned altitude. Expect filed altitude five minutes after departure.

CHOTE TRANSITION (GPI1.CHOTE)  
SKOTT TRANSITION (GPI1.SKOTT)