

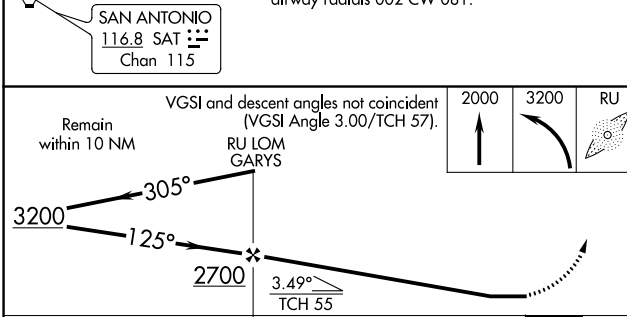
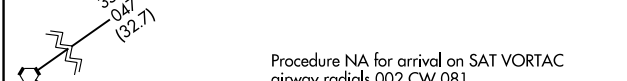
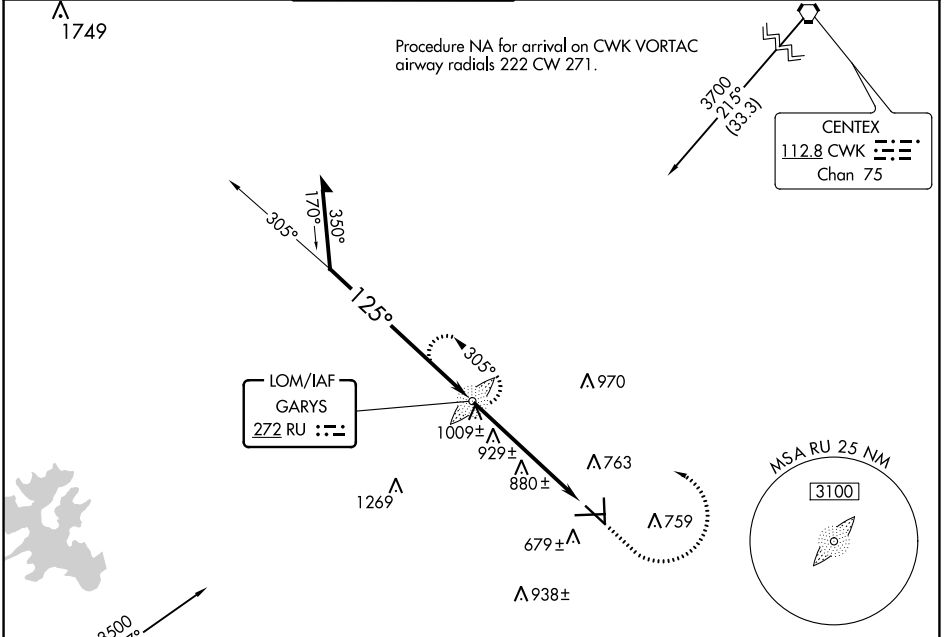
LOM RU	APP CRS	Rwy Idg	5601
272	125°	TDZE	593
		Apt Elev	595

NDB RWY 13

SAN MARCOS RGNL (HYI)

	MISSED APPROACH: Climb to 2000 then climbing left turn to 3200 direct GARYS LOM and hold.				

ATIS ★ 120.825	AUSTIN APP CON 119.0 370.85	SAN MARCOS TOWER★ 126.825 (CTAF)	GND CON 120.125	CLNC DEL 120.125	CLNC DEL 121.35 (when twr closed)
--------------------------	---------------------------------------	--	---------------------------	----------------------------	--



CATEGORY	A	B	C	D
S-13	1240-3/4	647 (700-3/4)	1240-1 5/8	647 (700-1 1/8)
CIRCLING	1240-1	645 (700-1)	1240-1 7/8	1320-2 1/4 645 (700-1 7/8) 725 (800-2 1/4)

ELEV 595	TDZE 593
MIRL Rwy's 8-26, 13-31, and 17-35	
FAF to MAP 5.5 NM	
Knots	60 90 120 150 180
Min:Sec	5:30 3:40 2:45 2:12 1:50

SC-3, 22 FEB 2024 to 21 MAR 2024

SC-3, 22 FEB 2024 to 21 MAR 2024