

WAAS CH 90442 W10A	APP CRS 101°	Rwy Idg TDZE Apt Elev	4000 728 732
--	------------------------	-----------------------------	---

RNAV (GPS) RWY 10

BRECKINRIDGE COUNTY (I93)

RNP APCH.

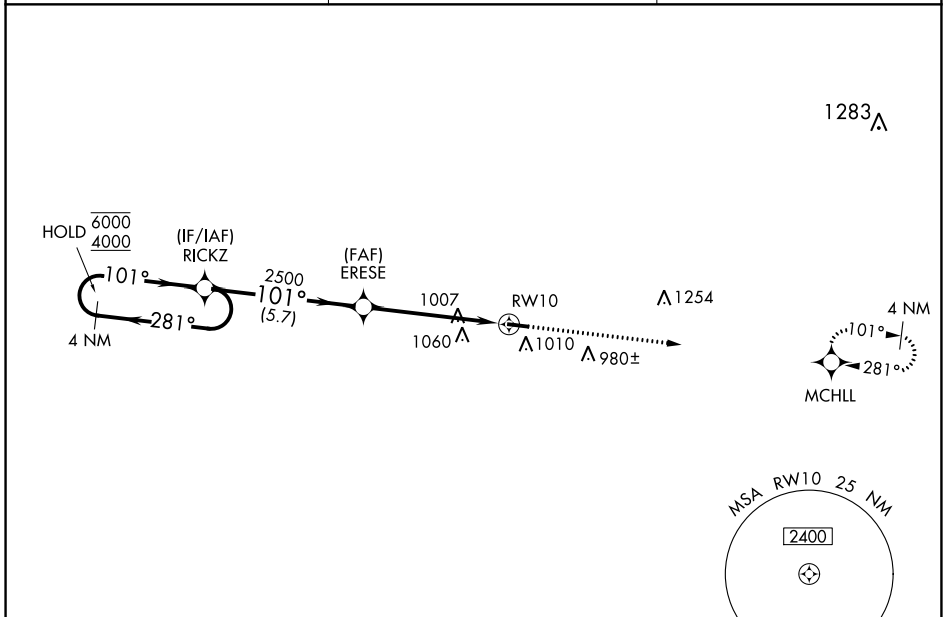
NA Rwy 10 helicopter visibility reduction below $\frac{3}{4}$ SM NA.
Baro-VNAV NA. Use Fort Knox altimeter setting, when not received,
use Elizabethtown altimeter setting and increase LPV DA to 1043,
LNAV/VNAV DA to 1191 and all MDA 20 feet.

MISSED APPROACH: Climb to 4000 direct MCHLL and hold,
continue climb-in-hold to 4000.

KFTK ATIS ★
109.6

LOUISVILLE APP CON
132.075 327.0

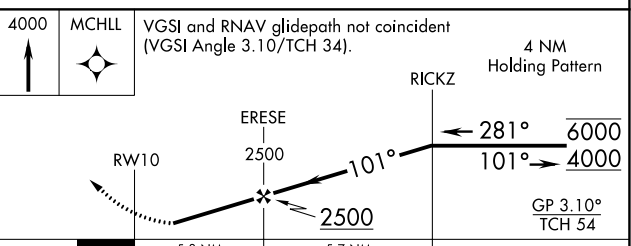
CTAF
122.9 0



SE-1, 22 FEB 2024 to 21 MAR 2024

SE-1, 22 FEB 2024 to 21 MAR 2024

ELEV 732	TDZE 728
----------	----------



CATEGORY	A	B	C	D
LPV DA		1036-1	308 (400-1)	
LNAV/VNAV DA		1184-1 $\frac{3}{8}$	456 (500-1 $\frac{3}{8}$)	
LNAV MDA	1380-1	652 (700-1)	1380-1 $\frac{7}{8}$	652 (700-1 $\frac{7}{8}$)
C CIRCLING	1380-1 648 (700-1)	1480-1 748 (800-1)	1480-2 $\frac{1}{4}$ 748 (800-2 $\frac{1}{4}$)	1480-2 $\frac{1}{2}$ 748 (800-2 $\frac{1}{2}$)

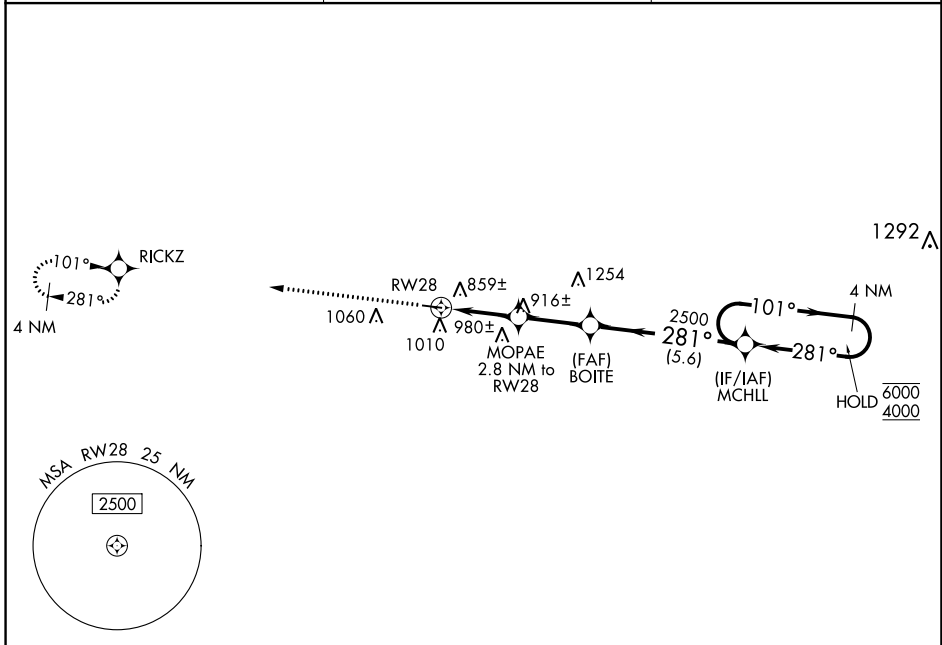
MIRL Rwy 10-28 **0**
REIL Rwy 10 and 28 **0**

WAAS CH 77842 W28A	APP CRS 281°	Rwy Idg TDZE Apt Elev	4000 732 732
--	------------------------	-----------------------------	---

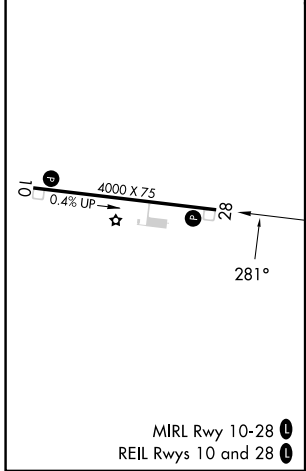
RNAV (GPS) RWY 28

BRECKINRIDGE COUNTY (I93)

RNP APCH.		MISSED APPROACH: Climb to 4000 direct RICKZ and hold, continue climb-in-hold to 4000.
<p>▽ Baro-VNAV NA. Use Fort Knox altimeter setting, when not received, use Elizabethtown altimeter setting and increase LPV DA to 1047, LNAV/VNAV DA to 1185 and all MDA 20 feet.</p> <p>△ NA</p>		
KFTK ATIS ★ 109.6	LOUISVILLE APP CON 132.075 327.0	CTAF 122.9 0



ELEV 732	TDZE 732
----------	----------



4000	RICKZ	VGSI and RNAV glidepath not coincident (VGSI Angle 3.00/TCH 27).	4 NM
			Holding Pattern
*LNAV only.	MOPAE	BOITE	MCHLL
	2.8 NM to RWY 28	2500	101° → 6000 ← 281° 4000
	1660*	2500	GP 3.00° TCH 50
	2.8 NM	2.6 NM	5.6 NM

CATEGORY	A	B	C	D
LPV DA		1040-1	308 (400-1)	
LNAV/VNAV DA		1178-1 ³ / ₈	446 (500-1 ³ / ₈)	
LNAV MDA	1180-1	448 (500-1)	1180-1 ³ / ₈	448 (500-1 ³ / ₈)
<input checked="" type="checkbox"/> CIRCLING	1380-1 648 (700-1)	1480-1 748 (800-1)	1480-2 ¹ / ₄ 748 (800-2 ¹ / ₄)	1480-2 ¹ / ₂ 748 (800-2 ¹ / ₂)

SE-1, 22 FEB 2024 to 21 MAR 2024

SE-1, 22 FEB 2024 to 21 MAR 2024