

APP CRS 226°	Rwy Idg 4797
	TDZE 1023
	Apt Elev 1029

RNAV (GPS) RWY 22

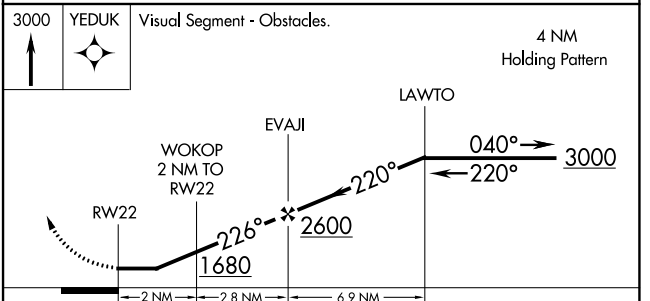
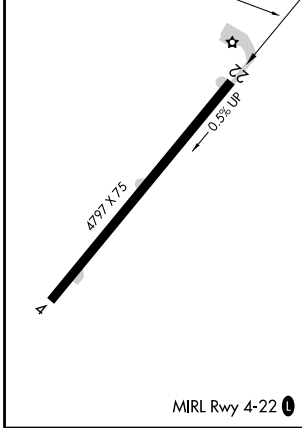
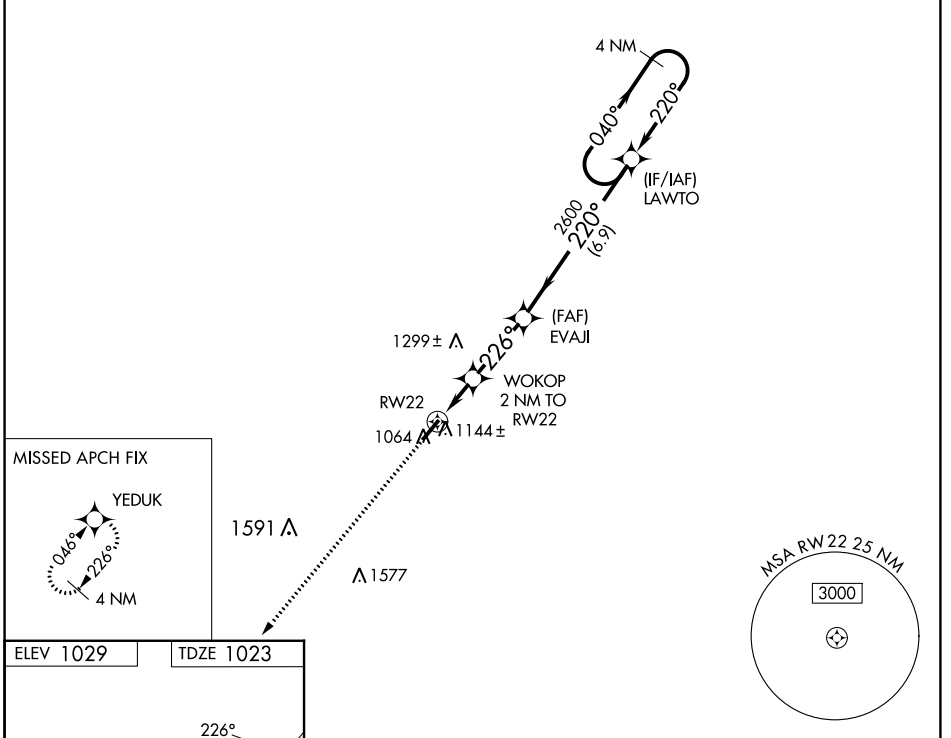
HARDIN COUNTY (I95)

RNP APCH - GPS.

NA Rwy 22 helicopter visibility reduction below 1 SM NA. Procedure NA at night. Circling NA for Cat D NW of Rwy 04-22. When local altimeter setting not received, use Lima altimeter setting and increase all MDAs 60 feet and LNAV visibility Cat C ¼ SM and Circling visibility Cat C ¼ SM.

MISSED APPROACH: Climb to 3000 direct YEDUK and hold.

AWOS-3 126.4	AOH ASOS 128.725	COLUMBUS APP CON 118.425 323.15	UNICOM 122.8 (CTAF) 0 *
------------------------	----------------------------	---	-----------------------------------



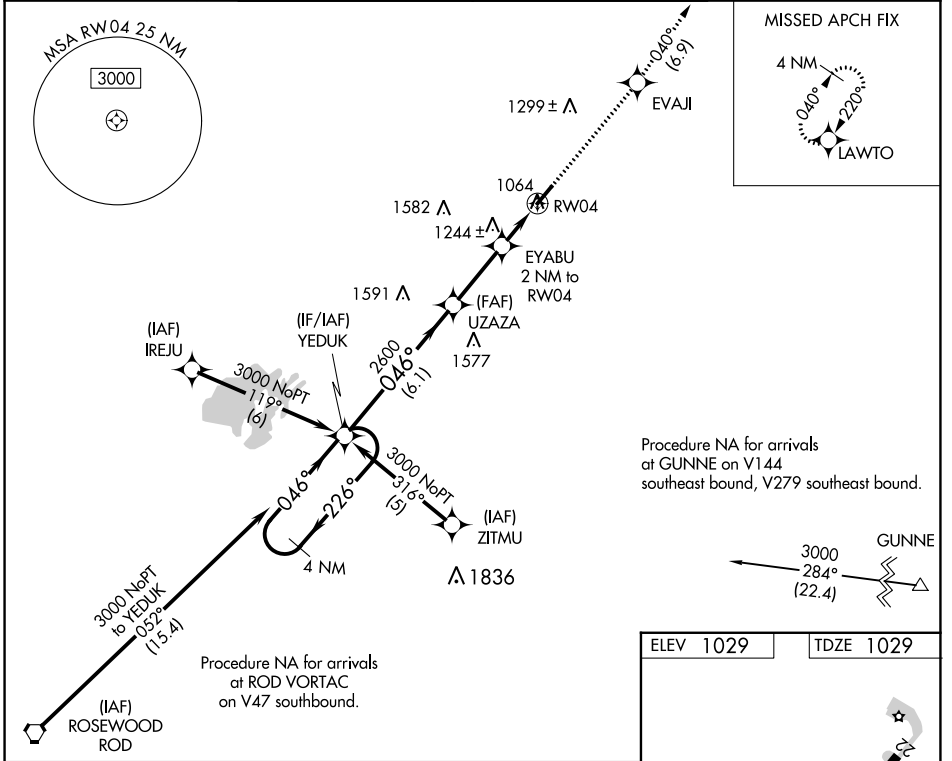
CATEGORY	A	B	C	D
LNAV MDA	1460-1	437 (500-1)	1460-1¼ 437 (500-1¼)	1460-1½ 437 (500-1½)
CIRCLING	1580-1 551 (600-1)	1620-1 591 (600-1)	1620-1½ 591 (600-1½)	1620-2 591 (600-2)

APP CRS	Rwy Idg	4797
046°	TDZE	1029
	Apt Elev	1029

RNAV (GPS) RWY 4

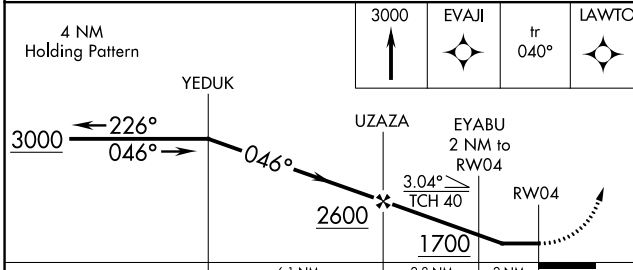
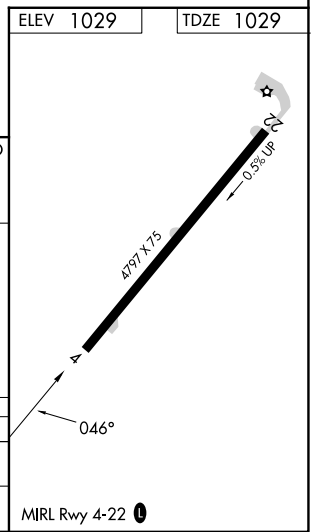
HARDIN COUNTY (I95)

RNP APCH - GPS.			UNICOM 122.8 (CTAF) 0 *
<p>NA Rwy 4 helicopter visibility reduction below 1 SM NA. Procedure NA at night. Circling NA for Cat D NW of Rwy 4-22. When local altimeter setting not received, use Lima altimeter setting and increase all MDAs 60 feet and LNAV visibility Cat C ¼ SM, and Circling visibility Cat C ¼ SM.</p>			MISSED APPROACH: Climb to 3000 direct EVAJI and on track 040° to LAWTO and hold.
AWOS-3 126.4	AOH ASOS 128.725	COLUMBUS APP CON 118.425 323.15	



Procedure NA for arrivals at GUNNE on V144 southeast bound, V279 southeast bound.

Procedure NA for arrivals at ROD VORTAC on V47 southbound.



CATEGORY	A	B	C	D
LNAV MDA	1560-1	531 (600-1)	1560-1½ 531 (600-1½)	1560-1¾ 531 (600-1¾)
CIRCLING	1580-1 551 (600-1)	1620-1 591 (600-1)	1620-1½ 591 (600-1½)	1620-2 591 (600-1)

EC-2, 22 FEB 2024 to 21 MAR 2024

EC-2, 22 FEB 2024 to 21 MAR 2024