

WAAS CH 82636 W17A	APP CRS 174°	Rwy ldg TDZE 1436 Apt Elev 1437
--	------------------------	---

RNAV (GPS) RWY 17

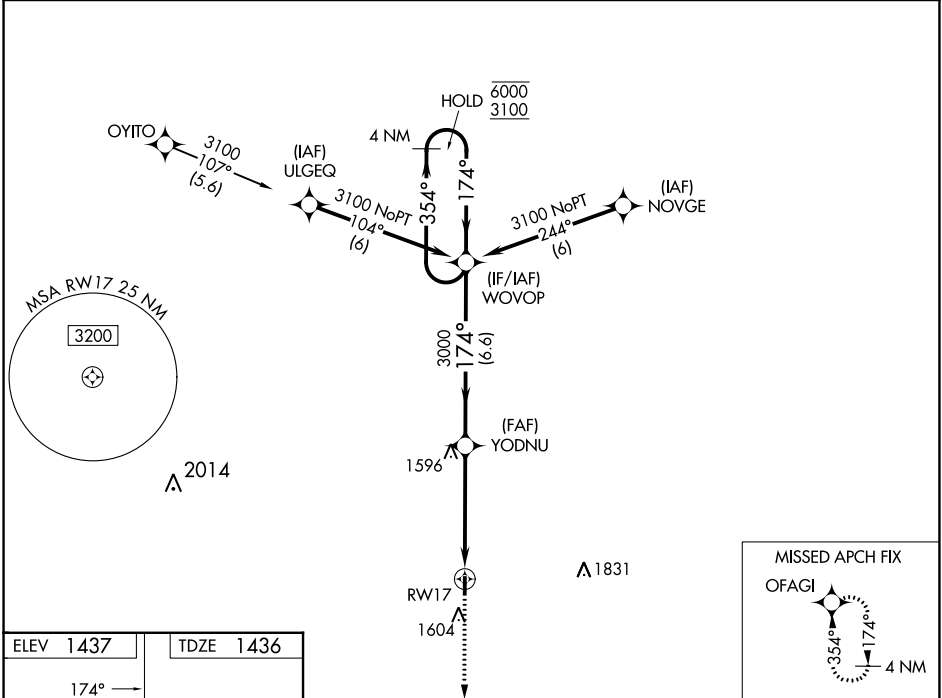
WASHINGTON COUNTY VETERAN'S MEML (K38)

RNP APCH - GPS.

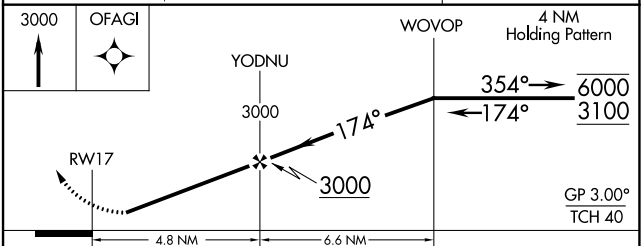
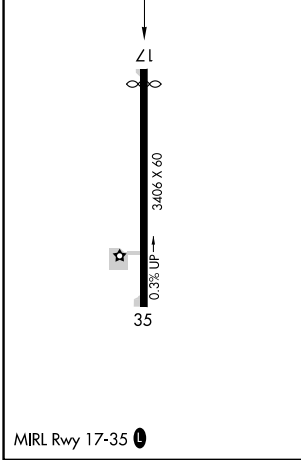
NA Rwy 17 helicopter visibility reduction below 1 SM NA.
Baro-VNAV NA. Use Concordia altimeter setting.
Straight-in and Circling Rwy 17 NA at night.

MISSED APPROACH: Climb to 3000 direct OFAGI and hold.

CNK ASOS 123.825	KANSAS CITY CENTER 127.35 257.975	CTAF 122.90
----------------------------	---	-----------------------



ELEV 1437	TDZE 1436
------------------	------------------



CATEGORY	A	B	C	D
LPV DA	1763-1	327 (400-1)		NA
LNAV/VNAV DA	1763-1	327 (400-1)		NA
LNAV MDA	1920-1	484 (500-1)	1920-1 $\frac{3}{8}$ 484 (500-1 $\frac{3}{8}$)	NA
C CIRCLING	1980-1	543 (600-1)	1980-1 $\frac{1}{2}$ 543 (600-1 $\frac{1}{2}$)	NA

NC-2, 22 FEB 2024 to 21 MAR 2024

NC-2, 22 FEB 2024 to 21 MAR 2024

WAAS CH 40436 W35A	APP CRS 354°	Rwy Idg TDZE Apt Elev	3406 1435 1437
--	------------------------	-----------------------------	---

RNAV (GPS) RWY 35

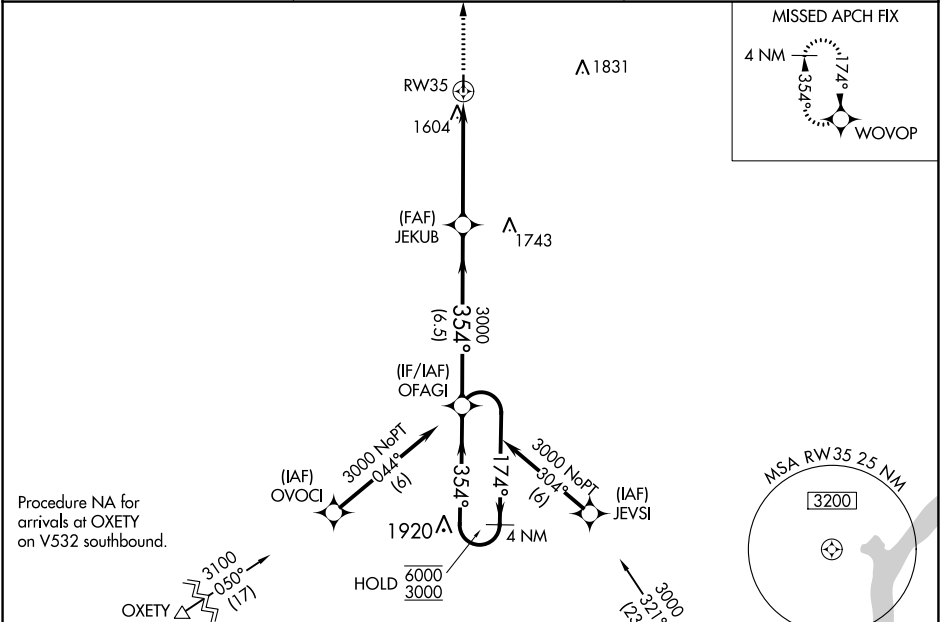
WASHINGTON COUNTY VETERAN'S MEML (K38)

RNP APCH - GPS.

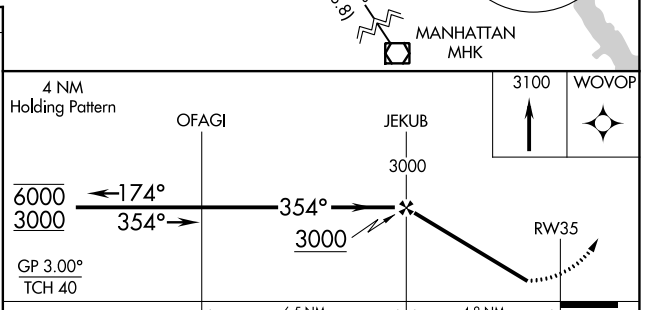
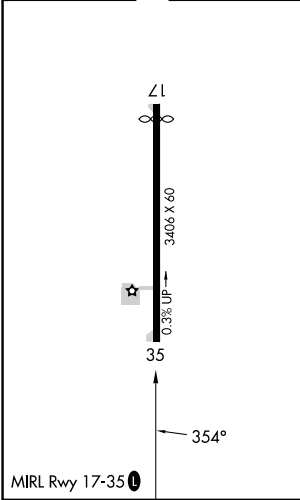
NA Circling Rwy 17 NA at night.
Rwy 35 helicopter visibility reduction below 3/4 SM NA.
Baro-VNAV NA. Use Concordia altimeter setting.

MISSED APPROACH: Climb to 3100 direct WOVOP and hold.

CNK ASOS 123.825	KANSAS CITY CENTER 127.35 257.975	CTAF 122.9
----------------------------	---	----------------------



ELEV 1437	TDZE 1435
-----------	-----------



CATEGORY	A	B	C	D
LPV DA	1762-1	327 (400-1)		NA
LNAV/VNAV DA	1827-1 1/8	392 (400-1 1/8)		NA
LNAV MDA	2020-1	585 (600-1)	2020-1 3/4 585 (600-1 3/4)	NA
C CIRCLING	2020-1	583 (600-1)	2020-1 3/4 583 (600-1 3/4)	NA

NC-2, 22 FEB 2024 to 21 MAR 2024

NC-2, 22 FEB 2024 to 21 MAR 2024