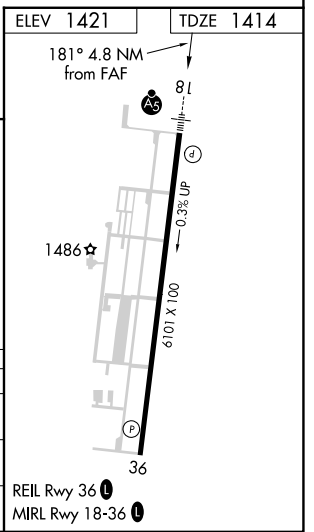
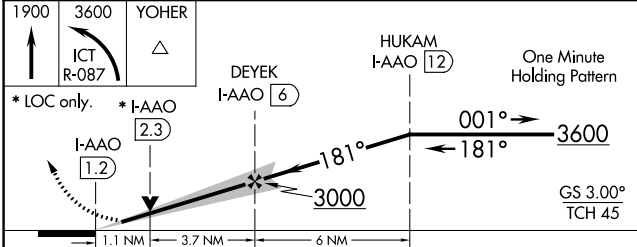
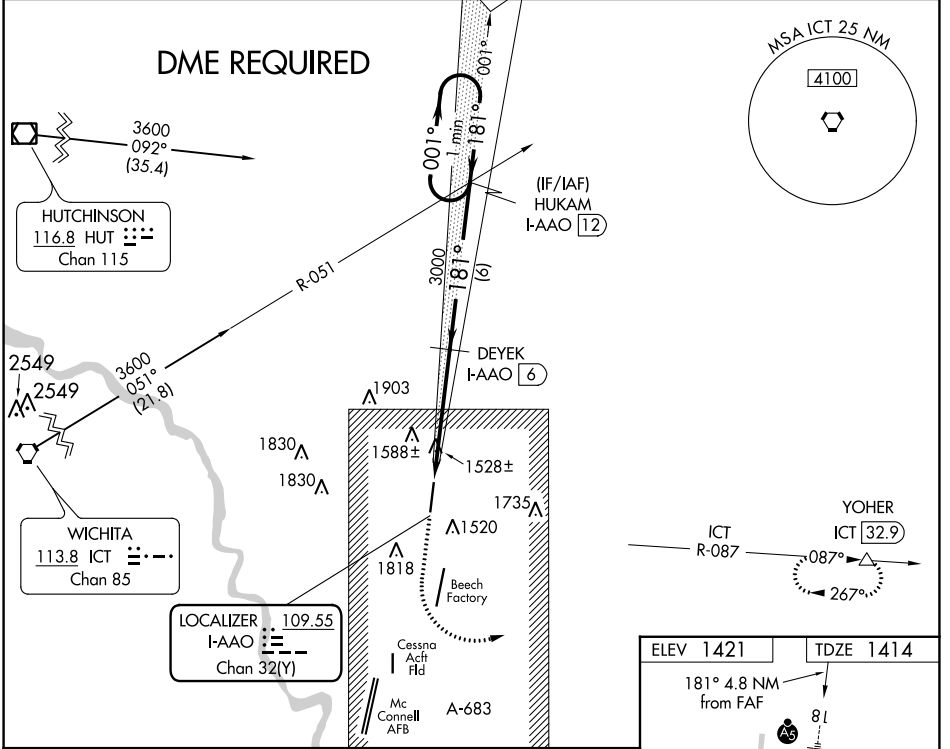


LOC/DME I-AAO 109.55 Chan 32 (Y)	APP CRS 181°	Rwy Idg TDZE Apt Elev	6101 1414 1421
---	------------------------	-----------------------------	---

ILS or LOC RWY 18
COLONEL JAMES JABARA (A.A.O)

▽ ▲ DME required.	MALSR 	MISSED APPROACH: Climb to 1900 then climbing left turn to 3600 on ICT VORTAC R-087 to YOHER/ICT 32.9 DME and hold.	
ASOS 134.025	WICHITA APP CON 134.8 269.1	CLNC DEL 125.0	UNICOM 122.7 (CTAF) 0



CATEGORY	A	B	C	D
S-ILS 18	1614-1/2		200 (200-1/2)	
S-LOC 18	1800-1/2	386 (400-1/2)	1800-5/8 386 (400-3/8)	1800-3/4 386 (400-3/4)
CIRCLING	1880-1 459 (500-1)	1940-1 519 (600-1)	2120-2 699 (700-2)	2220-2-1/2 799 (800-2-1/2)

NC-2, 23 MAR 2023 to 20 APR 2023

NC-2, 23 MAR 2023 to 20 APR 2023

WAAS CH 81808 W18A	APP CRS 181°	Rwy Idg TDZE 1414 Apt Elev 1421	6101
--	------------------------	---	-------------

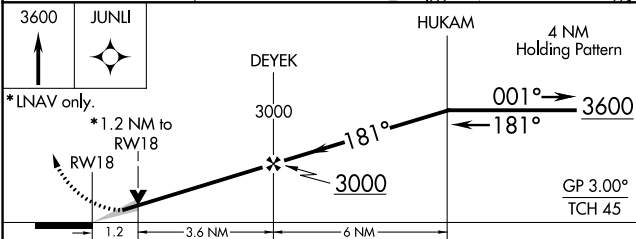
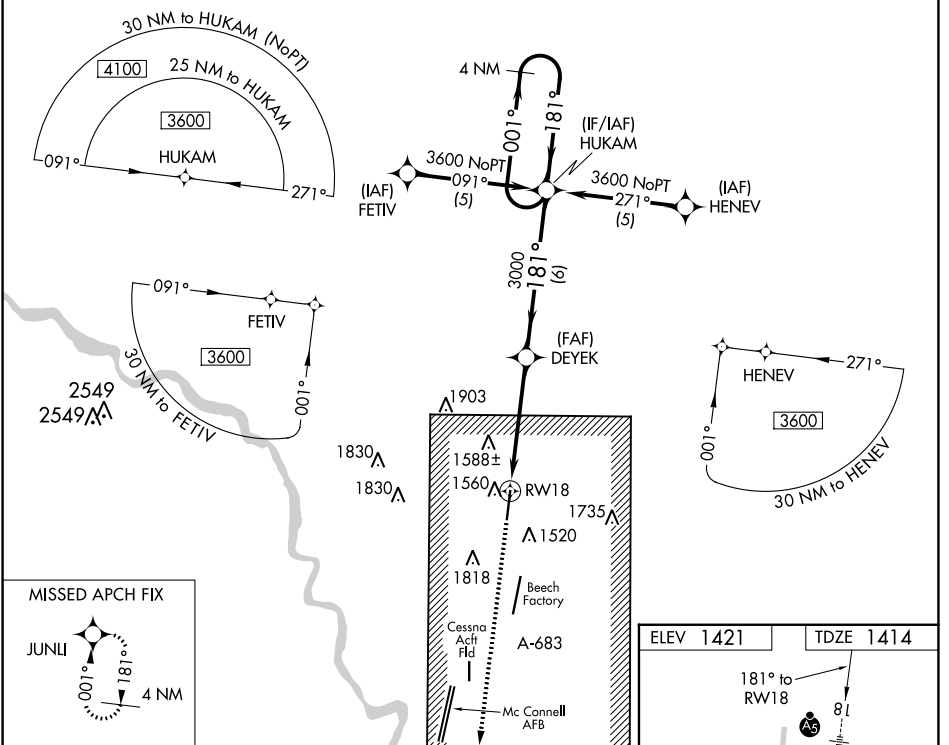
RNAV (GPS) RWY 18

COLONEL JAMES JABARA (A.A.O)

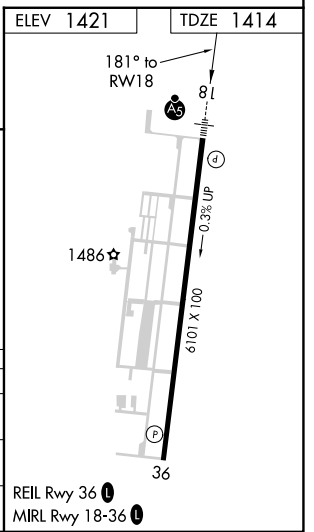
⚠ For inoperative MALSR, increase LPV all Cats visibility to 1 mile and LNAV Cat D visibility to 1 1/4. DME/DME RNP-0.3 NA. When local altimeter setting not received, use Wichita Dwight D Eisenhower Ntl altimeter setting: increase LPV DA to 1720; increase all MDAs 40 feet and Circling Cat D visibility 1/4 SM.

MALSR
MISSED APPROACH: Climb to 3600 direct JUNLI and hold.

ASOS 134.025	WICHITA APP CON 134.8 269.1	CLNC DEL 125.0	UNICOM 122.7 (CTAF) ①
------------------------	---------------------------------------	--------------------------	---------------------------------



CATEGORY	A	B	C	D
LPV DA	1680-1/2 266 (300-1/2)			
LNAV MDA	1820-1/2	406 (400-1/2)	1820-3/4 406 (400-3/4)	1820-1 406 (400-1)
CIRCLING	1880-1 459 (500-1)	1940-1 519 (600-1)	2120-2 699 (700-2)	2220-2 1/2 799 (800-2 1/2)



NC-2, 23 MAR 2023 to 20 APR 2023

NC-2, 23 MAR 2023 to 20 APR 2023

WAAS CH 86208 W36A	APP CRS 001°	Rwy Idg TDZE 1421 Apt Elev 1421	6101
--	------------------------	---	-------------

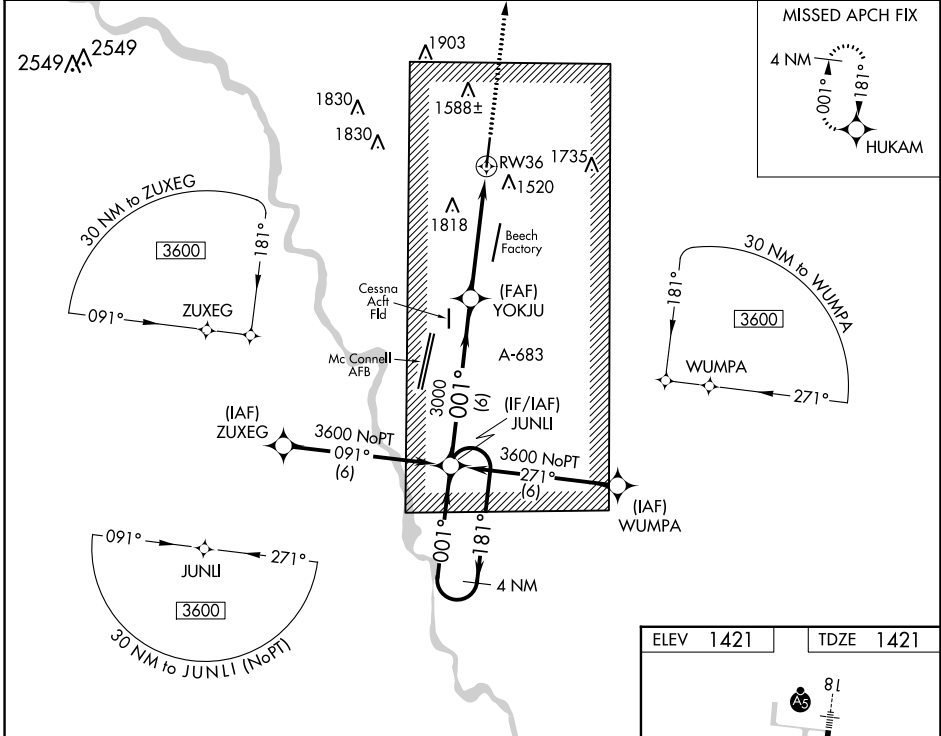
RNAV (GPS) RWY 36

COLONEL JAMES JABARA (A.A.O)

⚠ DME/DME RNP-0.3 NA. Visibility reduction by helicopters NA. When local altimeter setting not received, use Wichita Dwight D Eisenhower Ntl altimeter setting: increase LPV DA to 1780 and all LPV visibilities ¼ SM; increase all MDAs 40 feet; increase LNAV Cats C and D visibilities ½ SM; increase Circling Cat D visibility ¼ SM. VDP NA with Wichita Dwight D Eisenhower Ntl altimeter setting.

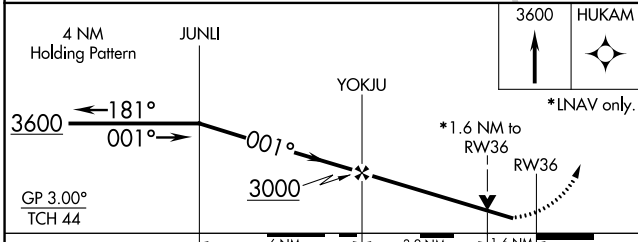
MISSED APPROACH: Climb to 3600 direct HUKAM and hold.

ASOS 134.025	WICHITA APP CON 134.8 269.1	CLNC DEL 125.0	UNICOM 122.7 (CTAF) ①
------------------------	---------------------------------------	--------------------------	---------------------------------

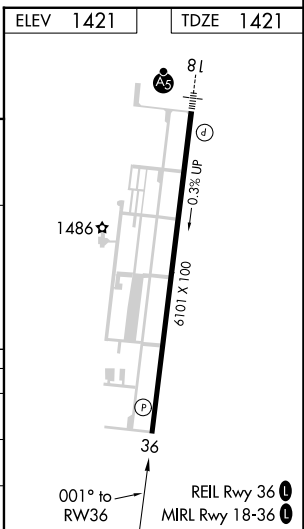


NC-2, 23 MAR 2023 to 20 APR 2023

NC-2, 23 MAR 2023 to 20 APR 2023



CATEGORY	A	B	C	D
LPV DA	1740-1 319 (400-1)			
LNAV MDA	1960-1	539 (600-1)	1960-1½ 539 (600-1½)	1960-1¾ 539 (600-1¾)
CIRCLING	1960-1	539 (600-1)	2120-2 699 (700-2)	2220-2½ 799 (800-2½)

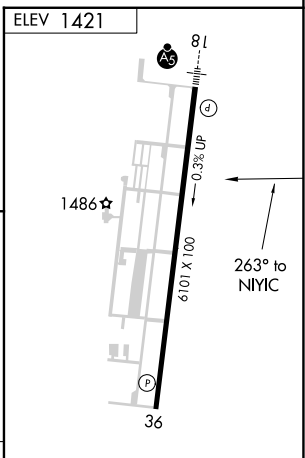
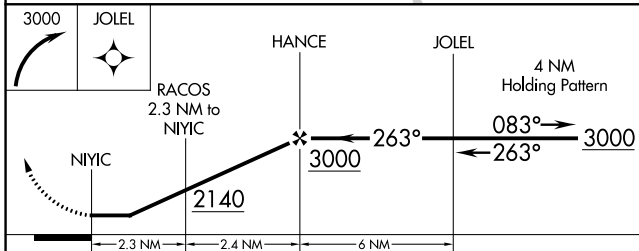
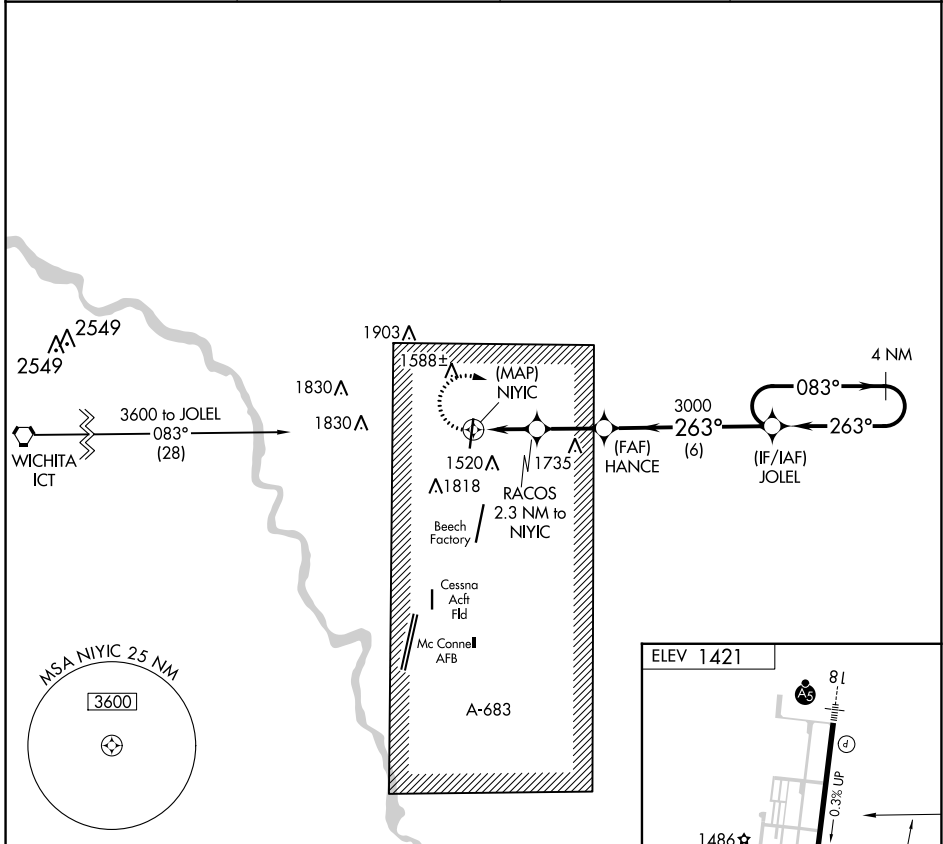


APP CRS 263°	Rwy Idg TDZE Apt Elev	N/A N/A 1421
------------------------	-----------------------------	---

RNAV (GPS)-E
COLONEL JAMES JABARA (A.A.O)

▼ DME/DME RNP-0.3 NA. When local altimeter setting not received, use Wichita Dwight D Eisenhower Nil altimeter setting and increase all MDAs 40 feet and visibility Cat D ¼ SM.
▲ MISSED APPROACH: Climbing right turn to 3000 direct JOLEL and hold.

ASOS 134.025	WICHITA APP CON 134.8 269.1	CLNC DEL 125.0	UNICOM 122.7 (CTAF)
------------------------	---------------------------------------	--------------------------	-------------------------------



CATEGORY	A	B	C	D
CIRCLING	1880-1 459 (500-1)	1940-1 519 (600-1)	2120-2 699 (700-2)	2220-2½ 799 (800-2½)

REIL Rwy 36 **Ⓛ**
MIRL Rwy 18-36 **Ⓛ**

NC-2, 23 MAR 2023 to 20 APR 2023

NC-2, 23 MAR 2023 to 20 APR 2023