


LOC I-AEG 110.1	APP CRS 215°	Rwy Idg TDZE Apt Elev	7398 5817 5837
---------------------------	------------------------	-----------------------------	---

ILS or LOC RWY 22

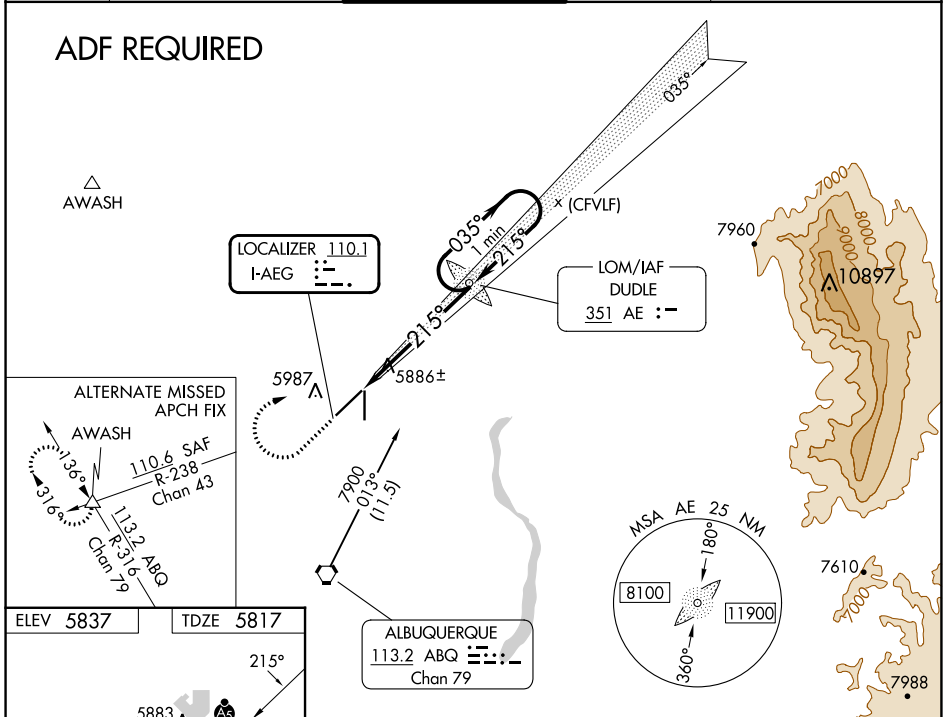
DOUBLE EAGLE II (A/E/G)

NA When local altimeter setting not received, use Albuquerque Intl Suport altimeter setting and increase all DA 94 feet, increase all MDA 100 feet, and increase visibility S-LOC 22 Cats C/D 1/4 mile, Circling Cats C/D 1/2 mile. For inop MALSRS when using Albuquerque Intl Suport altimeter setting, increase visibility S-ILS 22 all Cats 3/8 mile.

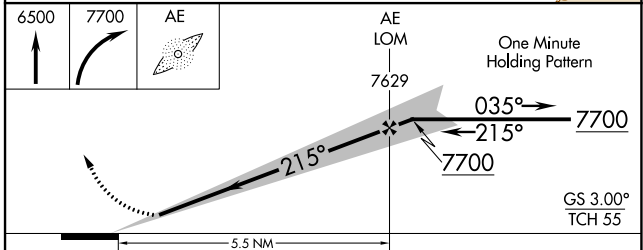
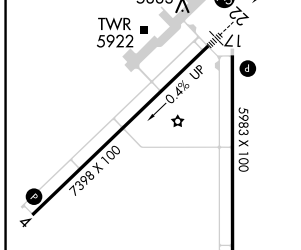
MALSRS  **MISSED APPROACH:** Climb to 6500 then climbing right turn 7700 direct DUDLE LOM and hold.

ATIS 119.025	ALBUQUERQUE APP CON 127.4 253.5	DOUBLE EAGLE II TOWER * 120.15 (CTAF)	GND CON 121.625	CLNC DEL 124.8 (When twr closed)
------------------------	---	---	---------------------------	---

ADF REQUIRED



ELEV 5837	TDZE 5817
-----------	-----------



REIL Rwy 17 and 35	MIRL Rwy 4-22 and 17-35	FAF to MAP 5.5 NM				
Knots	60	90	120	150	180	
Min:Sec	5:30	3:40	2:45	2:12	1:50	
CIRCLING	6400-1	563 (600-1)	6420-1½	583 (600-1½)	6640-2½	803 (900-2½)

SW-1, 22 FEB 2024 to 21 MAR 2024

SW-1, 22 FEB 2024 to 21 MAR 2024

WAAS CH 42539 W22A	APP CRS 215°	Rwy Idg TDZE Apt Elev	7398 5817 5837
--	------------------------	-----------------------------	---

RNAV (GPS) RWY 22

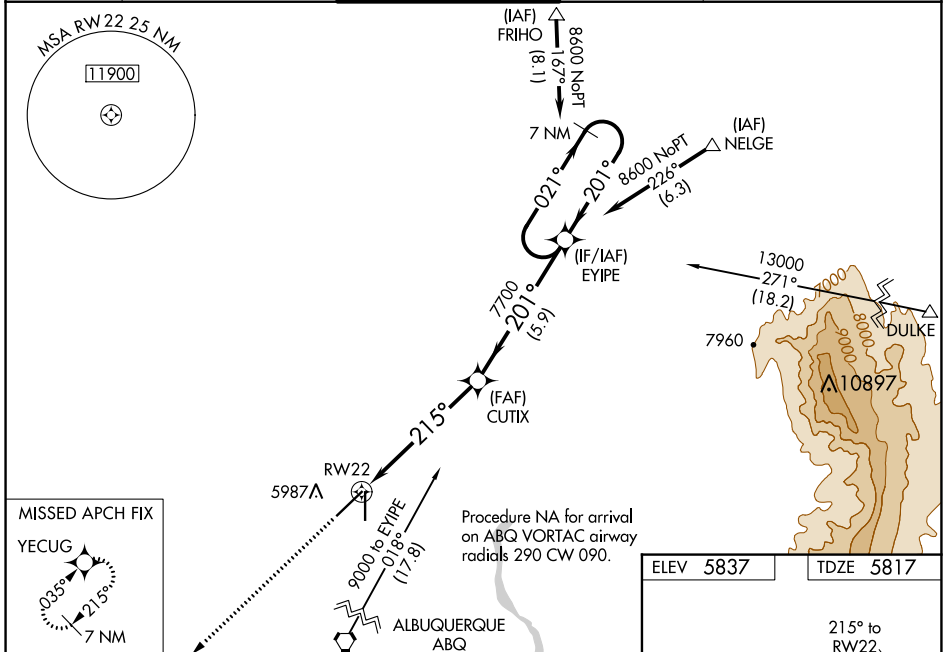
DOUBLE EAGLE II (A/E/G)

⚠ For uncompensated Baro-VNAV systems, LNAV/VNAV NA below -26°C (-14°F) or above 46°C (114 °F). DME/DME RNP-0.3 NA. When local altimeter setting not received, use Albuquerque Intl Sunport altimeter setting and increase LPV DA to 6111, LNAV-VNAV DA to 6234, increase all MDA 100 feet, and increase LNAV/VNAV visibility all Cats and LNAV Cat C/D visibility 3/8 mile and Circling Cat C/D visibility 1/2 mile. For inop MALS, increase LNAV/VNAV all Cats visibility to 1 mile. For inop MALS when using Albuquerque Intl Sunport altimeter setting, increase LPV all Cats visibility to 1 mile and LNAV/VNAV all Cats and LNAV Cat C/D visibility to 1 3/8 mile.

MALS

MISSED APPROACH:
Climb to 8800 direct YECUG and hold.

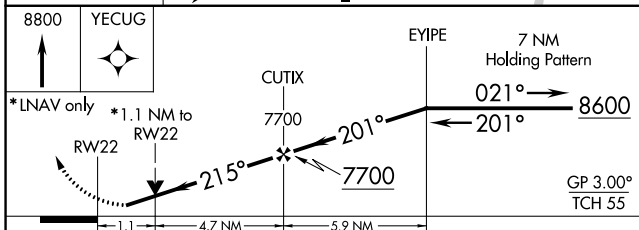
ATIS 119.025	ALBUQUERQUE APP CON 127.4 253.5	DOUBLE EAGLE II TOWER * 120.15 (CTAF)	GND CON 121.625	CLNC DEL 124.8 (When twr closed)
------------------------	---	---	---------------------------	---



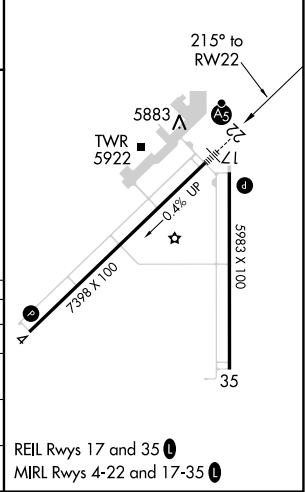
MISSED APCH FIX
YECUG

035° 215° 7 NM

8800 YECUG



ELEV 5837	TDZE 5817
-----------	-----------



CATEGORY	A	B	C	D
LPV DA		6017-1/2	200 (200-1/2)	
LNAV/VNAV DA		6140-5/8	323 (400-3/8)	
LNAV MDA	6200-1/2 383 (400-1/2)		6200-5/8 383 (400-5/8)	
C CIRCLING	6400-1 563 (600-1)		6420-1 1/2 583 (600-1 1/2)	6640-2 1/2 803 (900-2 1/2)

REIL Rwy 17 and 35

MIRL Rwy 4-22 and 17-35

SW-1, 22 FEB 2024 to 21 MAR 2024

SW-1, 22 FEB 2024 to 21 MAR 2024

WAAS CH 56339 W04A	APP CRS 035°	Rwy Idg 7398 TDZE 5837 Apt Elev 5837
--	------------------------	---

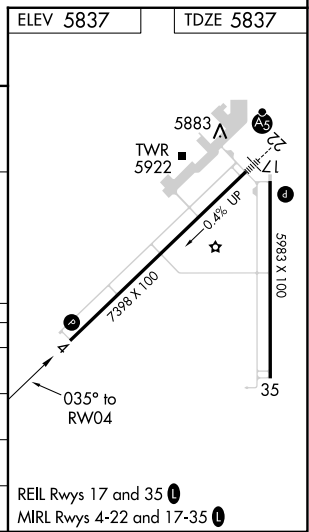
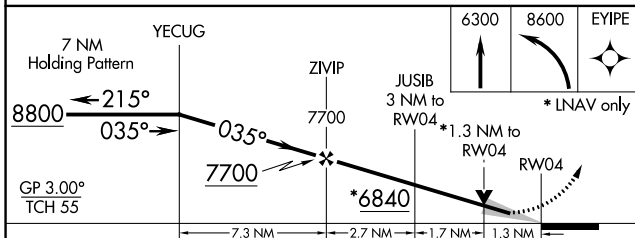
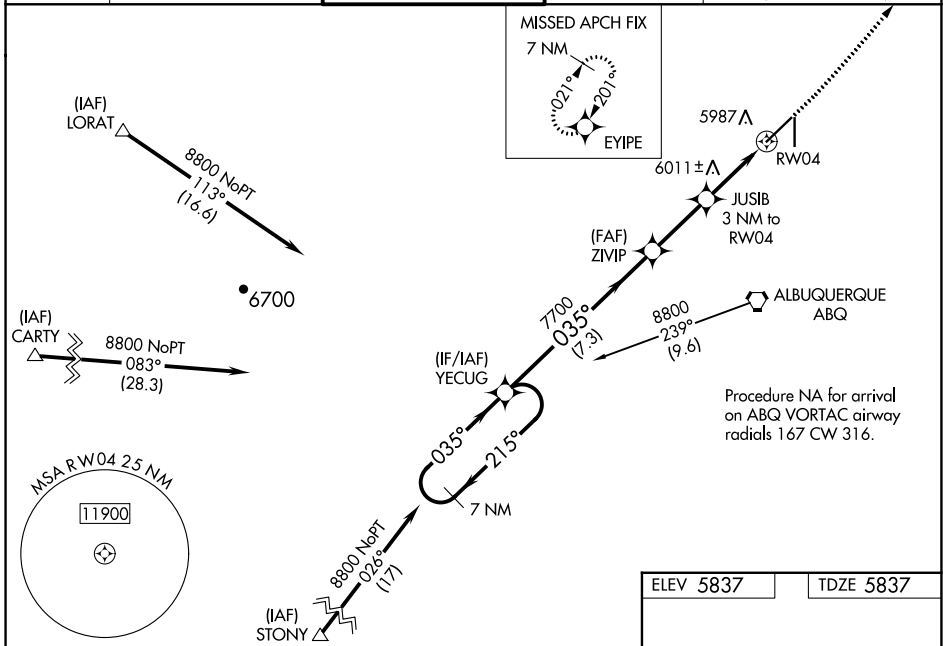
RNAV (GPS) RWY 4

DOUBLE EAGLE II (A/E/G)

⚠ DME/DME RNP-0.3 NA. When local altimeter setting not received, use Albuquerque Intl Support altimeter setting and increase LPV DA to 6131 feet and LNAV/VNAV DA to 6384 feet, increase all MDA 100 feet, and increase LPV all Cats visibility 1/8 mile, LNAV/VNAV all Cats visibility 3/8 mile, LNAV visibility Cat C/D 1/4 mile, and Circling visibility Cats C/D 1/2 mile. Baro-VNAV and VDP NA when using Albuquerque Intl Support altimeter setting. For uncompensated Baro-VNAV systems, LNAV/VNAV NA below -26°C (-14°F) or above 46°C (114°F).

MISSED APPROACH: Climb to 6300 then climbing left turn to 8600 direct EYIPE and hold.

ATIS 119.025	ALBUQUERQUE APP CON 127.4 253.5	DOUBLE EAGLE II TOWER ★ 120.15 (CTAF) 0	GND CON 121.625	CLNC DEL 124.8 (When twr closed)
------------------------	---	--	---------------------------	---



CATEGORY	A	B	C	D
LPV DA		6037-3/4	200 (200-3/4)	
LNAV/VNAV DA		6290-1 1/2	453 (500-1 1/2)	
LNAV MDA	6300-1	463 (500-1)	6300-1 3/8	463 (500-1 3/8)
C CIRCLING	6400-1	563 (600-1)	6420-1 1/2 583 (600-1 1/2)	6640-2 1/2 803 (900-2 1/2)

SW-1, 22 FEB 2024 to 21 MAR 2024

SW-1, 22 FEB 2024 to 21 MAR 2024