

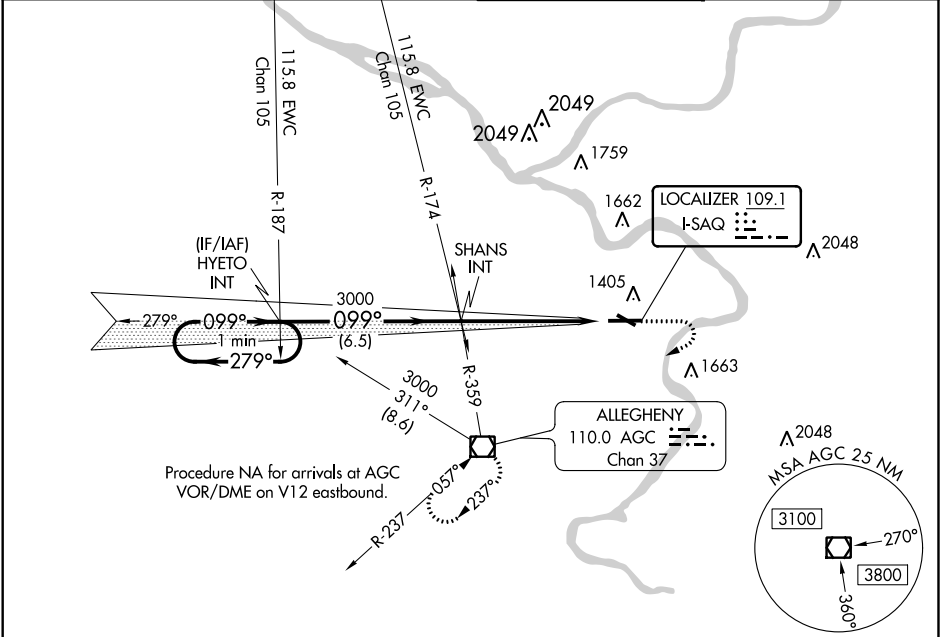
LOC I-SAQ 109.1	APP CRS 099°	Rwy ldg TDZE Apt Elev	6501 1251 1252
---------------------------	------------------------	-----------------------------	---

ILS or LOC RWY 10

ALLEGHENY COUNTY (AGC)

MISSED APPROACH: Climb to 2000 then climbing right turn to 3000 direct AGC VOR/DME and hold.

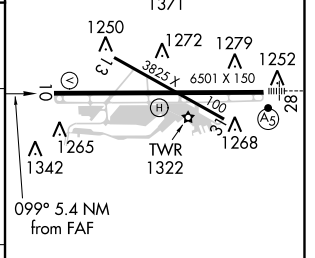
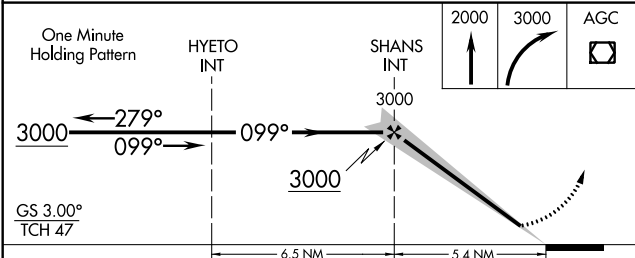
ATIS 120.55	PITTSBURGH APP CON 119.35 285.575 337.4	ALLEGHENY TOWER 121.1 239.0	GND CON 121.7
-----------------------	---	---------------------------------------	-------------------------



NE-4, 07 NOV 2019 to 05 DEC 2019

NE-4, 07 NOV 2019 to 05 DEC 2019

ELEV 1252	TDZE 1251
-----------	-----------



CATEGORY	A	B	C	D
S-ILS 10	1451-3/4		200 (200-3/4)	
S-LOC 10	1760-1	509 (600-1)	1760-1 3/8	509 (600-1 3/8)
CIRCLING	1760-1	508 (600-1)	1980-2	1980-2 1/4
			728 (800-2)	728 (800-2 1/4)

REIL Rwy 10, 13, and 31	HIRL Rwy 10-28 and 13-31
FAF to MAP 5.4 NM	
Knots	60 90 120 150 180
Min:Sec	5:24 3:36 2:42 2:10 1:48

WAAS CH 97325 W10A	APP CRS 099°	Rwy Idg TDZE Apt Elev 6501 1251 1252
--	------------------------	--

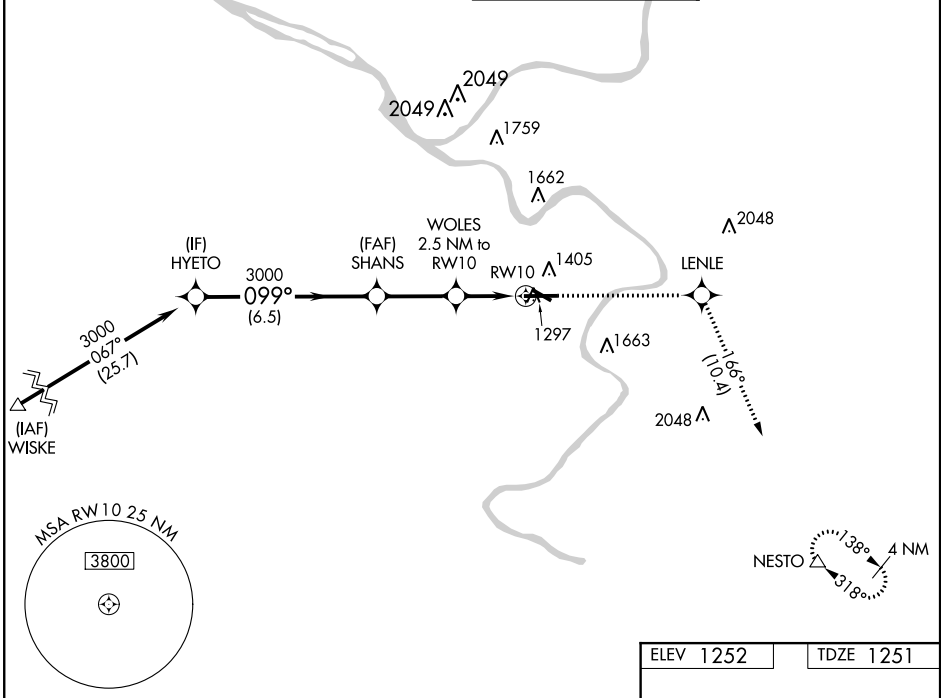
RNAV (GPS) RWY 10

ALLEGHENY COUNTY (AGC)

For uncompensated Baro-VNAV systems, LNAV/VNAV NA below -17°C (2°F) or above 54°C (130°F). DME/DME RNP-0.3 NA.

MISSED APPROACH: Climb to 3100 direct LENLE and on track 166° to NESTO and hold.

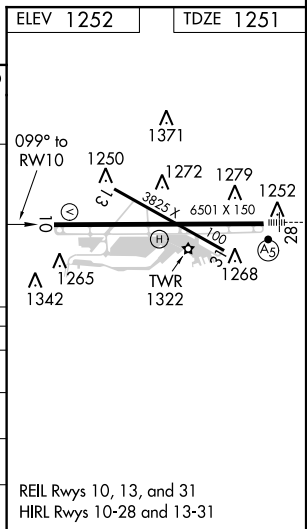
ATIS 120.55	PITTSBURGH APP CON 119.35 285.575	ALLEGHENY TOWER 121.1 239.0	GND CON 121.7
-----------------------	---	---------------------------------------	-------------------------



NE-4, 07 NOV 2019 to 05 DEC 2019

NE-4, 07 NOV 2019 to 05 DEC 2019

	ELEV 1252		TDZE 1251	
	HYETO		SHANS	
	3000		3000	
	099°		*2080	
	GP 3.00°		*1.1 NM to RWY 10	
	TCH 47		*1.1 NM to RWY 10	
	6.5 NM		2.8 NM	
	A		B	
LPV DA	1451-3/4		200 (200-3/4)	
LNAV/VNAV DA	1554-1		303 (400-1)	
LNAV MDA	1660-1 409 (500-1)		1660-1 1/8 409 (500-1 1/8)	
CIRCLING	1740-1 488 (500-1)		1740-1 1/2 488 (500-1 1/2) 1820-2 568 (600-2)	



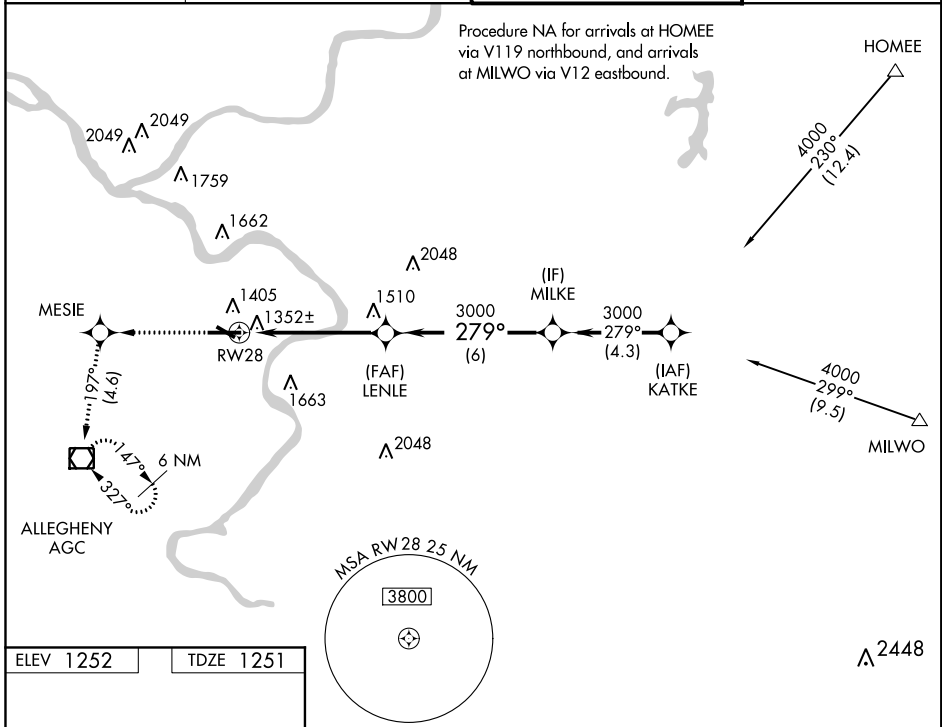
WAAS CH 65625 W28A	APP CRS 279°	Rwy ldg TDZE 1251 Apt Elev 1252	6501
--	------------------------	---	-------------

RNAV (GPS) RWY 28

ALLEGHENY COUNTY (AGC)

<p>Baro-VNAV NA below -17°C (2°F). DME/DME RNP-0.3 NA. For inoperative MALSRS, increase LPV visibility to RVR 5000 all Cats.</p>	<p>MALSRS</p>	<p>MISSED APPROACH: Climb to 3000 direct MESIE and via 197° track to AGC VOR/DME and hold.</p>
--	---------------	--

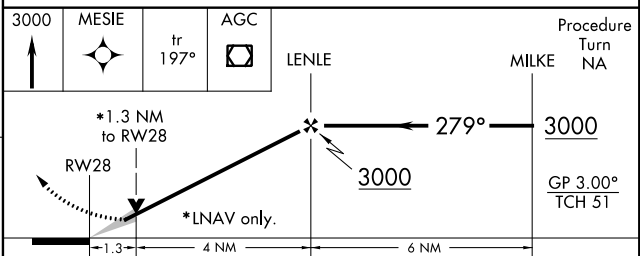
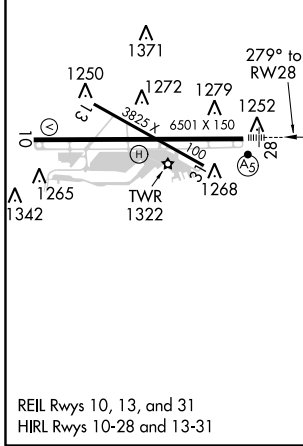
ATIS 120.55	PITTSBURGH APP CON 119.35 285.575	ALLEGHENY TOWER 121.1 239.0	GND CON 121.7
-----------------------	---	---------------------------------------	-------------------------



NE-4, 07 NOV 2019 to 05 DEC 2019

NE-4, 07 NOV 2019 to 05 DEC 2019

ELEV 1252	TDZE 1251
-----------	-----------



CATEGORY	A	B	C	D
LPV DA	1563/24 312 (400-½)			
LNAV/VNAV DA	1625/40 374 (400-¾)			
LNAV MDA	1700/24 449 (500-½)	1700/40 449 (500-¾)	1700/50 449 (500-1)	1700/50 449 (500-1)
CIRCLING	1740-1¼ 488 (500-1¼)	1740-1½ 488 (500-1½)	1820-2 568 (600-2)	1820-2 568 (600-2)