

LOC/DME I-AKR 110.9 Chan 46	APP CRS 249°	Rwy Idg TDZE Apt Elev	6074 1059 1068
---	------------------------	-----------------------------	---

LOC RWY 25

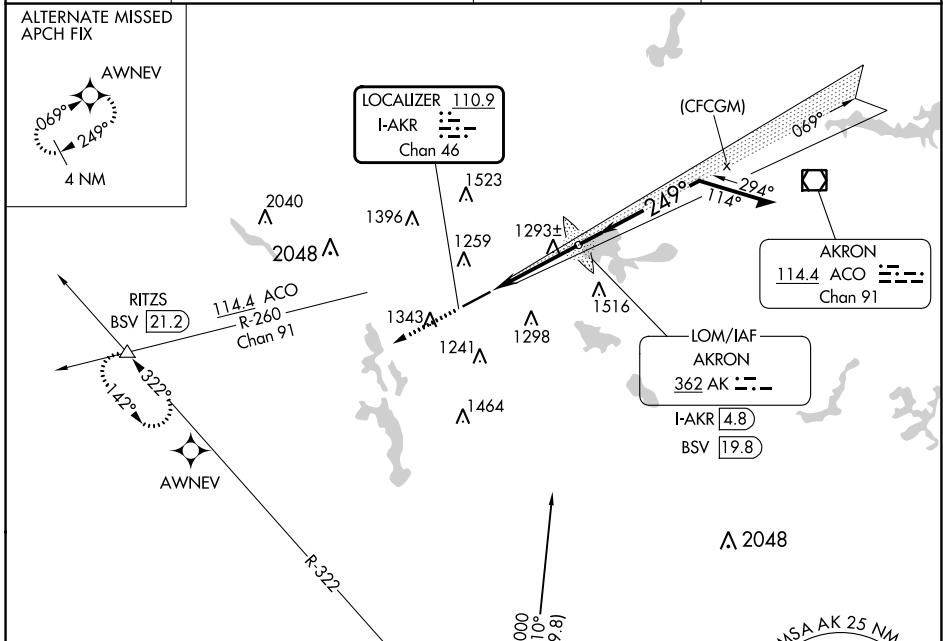
AKRON FULTON INTL (AKR)

ADF or DME or RADAR required for procedure entry.

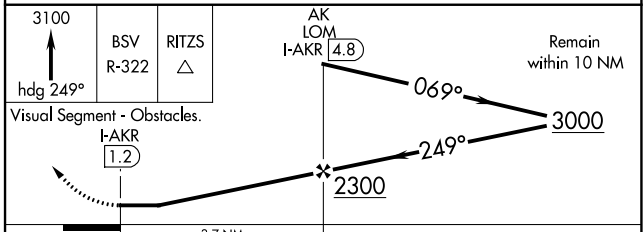
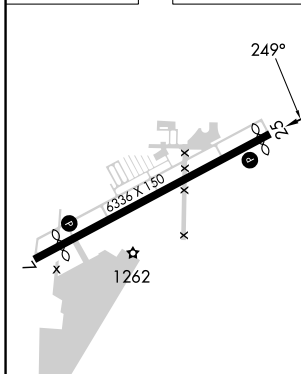
▽ Rwy 25 helicopter visibility reduction below 1 SM NA.
▲ Circling Rwy 7 NA at night.

MISSED APPROACH: Climb to 3100 on heading 249° and BSV VOR/DME R-322 to RITZS INT/BSV 21.2 DME and hold.

ASOS 126.825	CLEVELAND APP CON * 125.5 371.875	CLNC DEL 121.6	UNICOM 123.075 (CTAF) 0
------------------------	---	--------------------------	--



ELEV 1068	TDZE 1059
-----------	-----------



CATEGORY	A	B	C	D
S-LOC 25	1560-1	501 (500-1)	1560-1 $\frac{3}{8}$	501 (500-1 $\frac{3}{8}$)
CIRCLING	1600-1 532 (600-1)	1680-1 612 (700-1)	1800-2 732 (800-2)	1840-2 $\frac{1}{2}$ 772 (800-2 $\frac{1}{2}$)

EC-2, 22 FEB 2024 to 21 MAR 2024

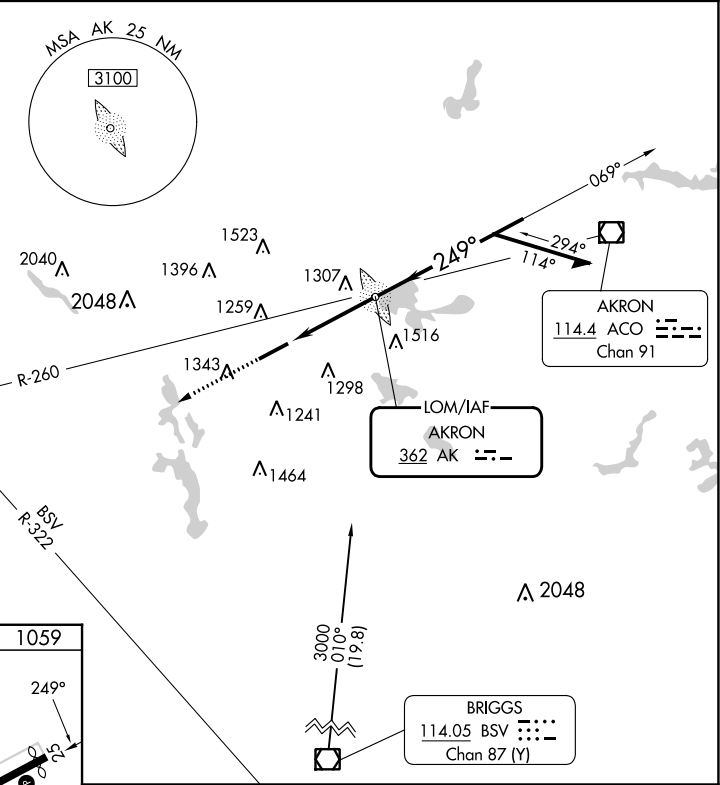
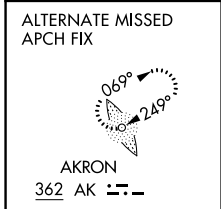
EC-2, 22 FEB 2024 to 21 MAR 2024

LOM AK 362	APP CRS 249°	Rwy Idg 6074
		TDZE 1059
		Apt Elev 1068

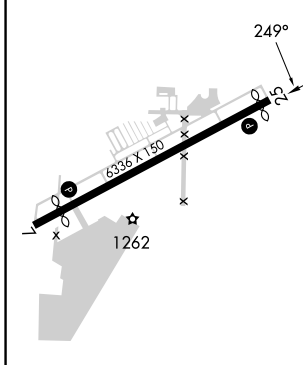
NDB RWY 25

AKRON FULTON INTL (AKR)

<p>▼ Rwy 25 helicopter visibility reduction below 1 SM NA. ▲ Circling Rwy 7 NA at night.</p>		<p>MISSED APPROACH: Climb to 3100 on heading 249° and BSV VOR/DME R-322 to RITZS INT/BSV 21.2 DME and hold.</p>	
ASOS 126.825	CLEVELAND APP CON * 125.5 371.875	CLNC DEL 121.6	UNICOM 123.075 (CTAF) 0



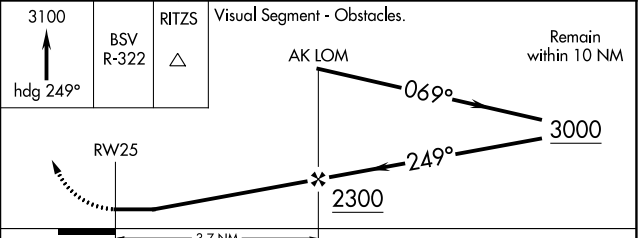
ELEV 1068	TDZE 1059
-----------	-----------



REIL Rwys 7 and 25 0
MIRL Rwy 7-25 0

FAF to MAP 3.7 NM

Knots	60	90	120	150	180
Min:Sec	3:42	2:28	1:51	1:29	1:14



CATEGORY	A	B	C	D
S-25	1620-1	561 (600-1)	1620-1½	561 (600-1½)
CIRCLING	1620-1 552 (600-1)	1680-1 612 (700-1)	1800-2 732 (800-2)	1840-2½ 772 (800-2½)

EC-2, 22 FEB 2024 to 21 MAR 2024

EC-2, 22 FEB 2024 to 21 MAR 2024

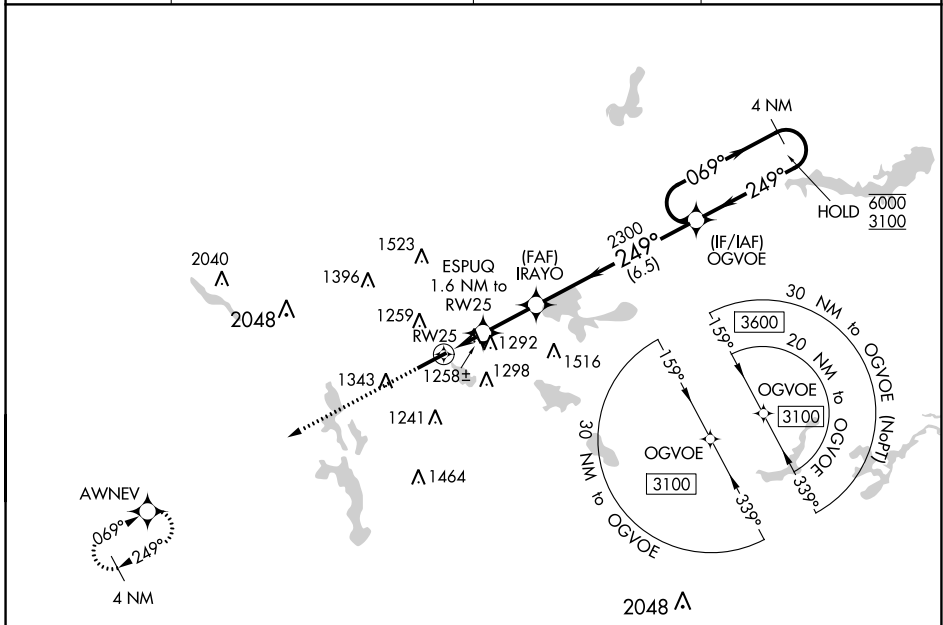
WAAS CH 99735 W25A	APP CRS 249°	Rwy Idg TDZE Apt Elev	6074 1059 1068
--	------------------------	-----------------------------	---

RNAV (GPS) RWY 25

AKRON FULTON INTL (AKR)

RNP APCH.	MISSED APPROACH: Climb to 3100 direct AWNEV and hold.
<p>Rwy 25 helicopter visibility reduction below 1 SM NA. Circling Rwy 7 NA at night.</p>	

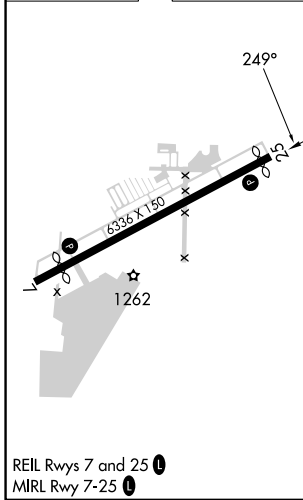
ASOS 126.825	CLEVELAND APP CON ★ 125.5 371.875	CLNC DEL 121.6	UNICOM 123.075 (CTAF)
------------------------	---	--------------------------	---------------------------------



EC-2, 22 FEB 2024 to 21 MAR 2024

EC-2, 22 FEB 2024 to 21 MAR 2024

ELEV 1068	TDZE 1059
-----------	-----------



3100	AWNEV	Visual Segment - Obstacles.	4 NM	
↑	☀		OGVOE Holding Pattern	
	ESPUQ 1.6 NM to RW25	IRAYO	069° → 6000 ← 249° 3100	
	RW25	2300		
	1.6 NM	2.2 NM	6.5 NM	
CATEGORY	A	B	C	D
LP MDA	1520-1	461 (500-1)	1520-1 3/8	461 (500-1 3/8)
LNNAV MDA	1560-1	501 (500-1)	1560-1 3/8	501 (500-1 3/8)
CIRCLING	1600-1 532 (600-1)	1680-1 612 (700-1)	1800-2 732 (800-2)	1840-2 1/2 772 (800-2 1/2)

REIL Rwy 7 and 25
MIRL Rwy 7-25

AKRON, OHIO
Orig-D 08SEP22

41°02'N-81°28'W

AKRON FULTON INTL (AKR)

RNAV (GPS) RWY 25