

APP CRS	Rwy Idg	4405
173°	TDZE	6
	Apt Elev	7

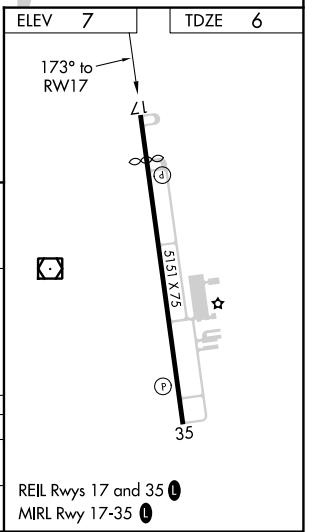
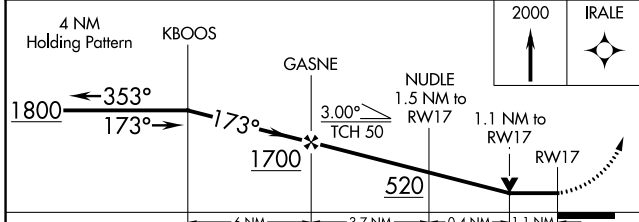
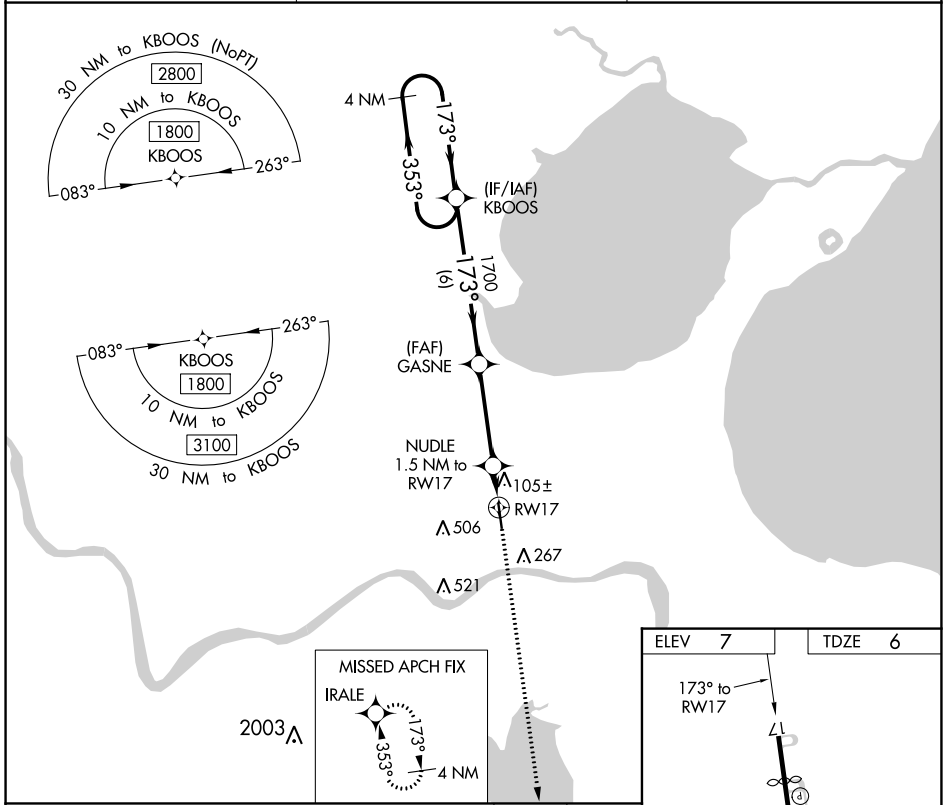
RNAV (GPS) RWY 17

PORT OF SOUTH LOUISIANA EXEC RGNL (APS)

⚠ Rwy 17 helicopter visibility reduction below 3/4 SM NA. DME/DME RNP-0.3 NA.
⚠ When local altimeter setting not received, use Louis Armstrong New Orleans Intl altimeter setting and increase all MDA 60 feet, increase LNAV Cat C visibility 1/4 SM. VDP NA when using Louis Armstrong New Orleans Intl altimeter setting.

MISSED APPROACH: Climb to 2000 direct IRALE and hold.

AWOS-3PT 125.45	NEW ORLEANS APP CON 125.5 350.35	UNICOM 122.7 (CTAF) 0
---------------------------	--	---------------------------------



CATEGORY	A	B	C	D
LNAV MDA	400-1	394 (400-1)	400-1 1/8 394 (400-1 1/8)	NA
C CIRCLING	700-1	693 (700-1)	820-2 1/2 813 (900-2 1/2)	NA

REIL Rwy 17 and 35 **0**
 MIRL Rwy 17-35 **0**

SC-4, 22 FEB 2024 to 21 MAR 2024

SC-4, 22 FEB 2024 to 21 MAR 2024

WAAS CH 87111 W35A	APP CRS 353°	Rwy Idg 5151 TDZE 7 Apt Elev 7
--	------------------------	---

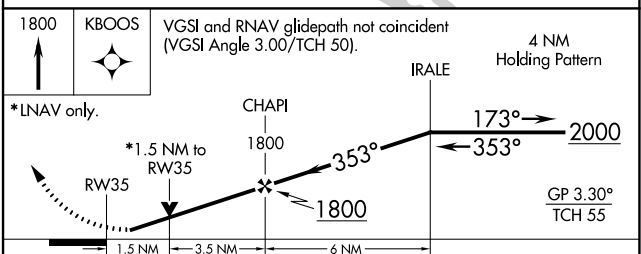
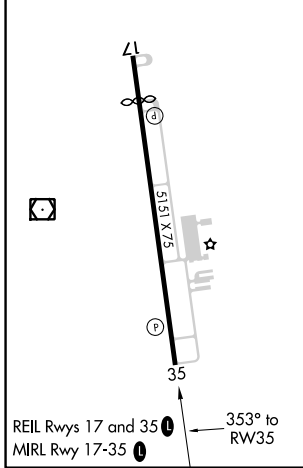
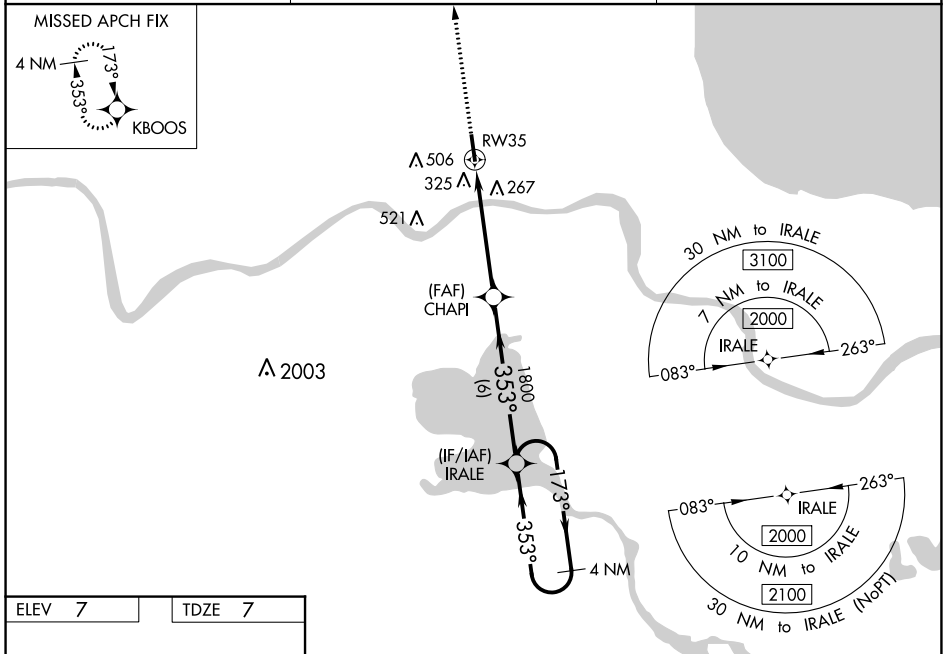
RNAV (GPS) RWY 35

PORT OF SOUTH LOUISIANA EXEC RGNL (A.P.S)

⚠ For uncompensated Baro-VNAV systems, LNAV/VNAV NA below -15°C (5°F) or above 54°C (130°F).
⚠ Rwy 35 helicopter visibility reduction below ¼ SM NA. DME/DME RNP-0.3 NA. When local altimeter setting not received, use Louis Armstrong New Orleans Intl altimeter setting and increase LPV DA to 318 feet, LNAV/VNAV DA to 618 feet, all visibilities ¼ SM; increase all MDA 60 feet and LNAV visibility Cat C ½ SM. Baro-VNAV and VDP NA with Louis Armstrong New Orleans Intl altimeter setting.

MISSED APPROACH:
 Climb to 1800 direct
 KBOOS and hold.

AWOS-3PT 125.45	NEW ORLEANS APP CON 125.5 350.35	UNICOM 122.7 (CTAF) 0
---------------------------	--	---------------------------------



CATEGORY	A	B	C	D
LPV DA	276-7/8	269 (300-7/8)		NA
LNAV/VNAV DA	576-13/4	569 (600-13/4)		NA
LNAV MDA	580-1	573 (600-1)	580-15/8 573 (600-15/8)	NA
C CIRCLING	700-1	693 (700-1)	820-21/2 813 (900-21/2)	NA

SC-4, 22 FEB 2024 to 21 MAR 2024

SC-4, 22 FEB 2024 to 21 MAR 2024

RESERVE, LOUISIANA

AL-9134 (FAA)

21168

VOR/DME RQR 110.8 Chan 45	APP CRS 335°	Rwy Idg 5151 TDZE 7 Apt Elev 7
---	------------------------	---

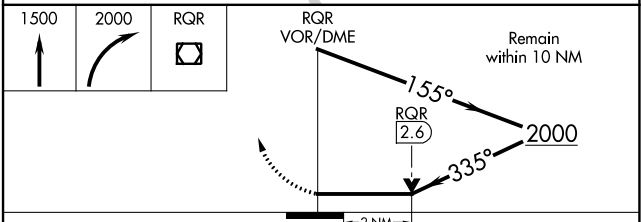
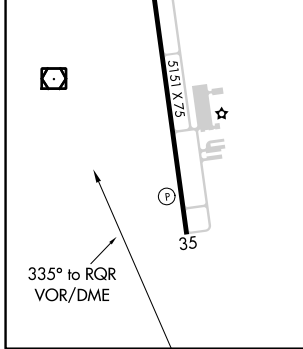
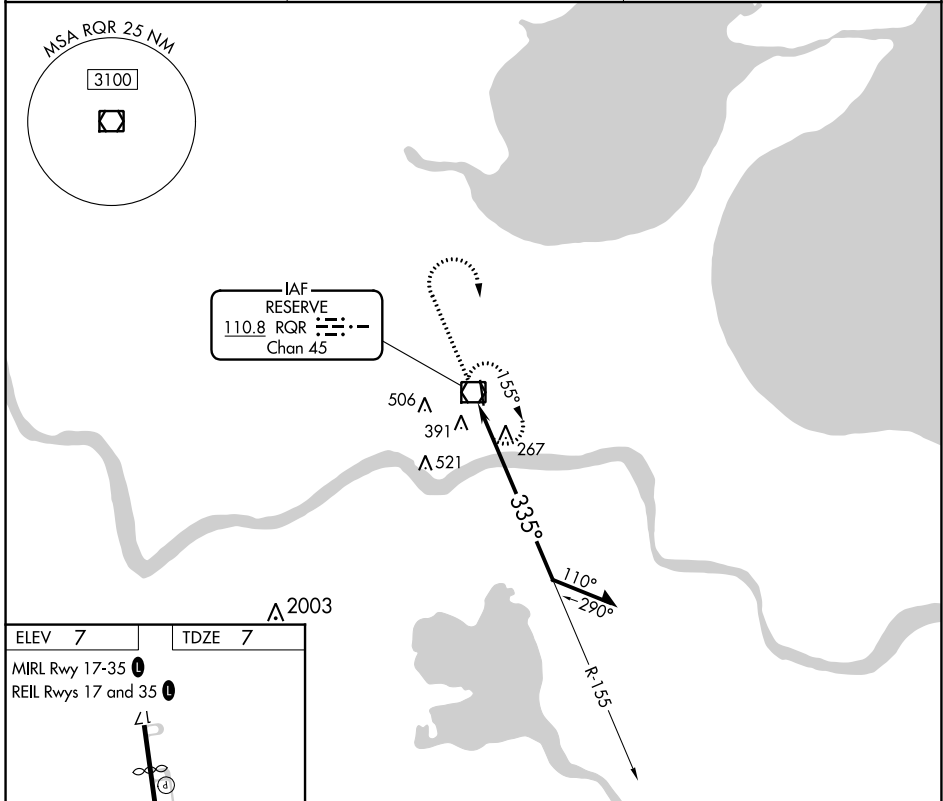
VOR RWY 35

PORT OF SOUTH LOUISIANA EXEC RGNL (APS)

⚠ Rwy 35 helicopter visibility reduction below 3/4 SM NA. When local altimeter setting not received, use Louis Armstrong New Orleans Intl altimeter setting and increase all MDA 60 feet, increase S-35 and Circling Cat B visibility 1/4 SM. VDP NA when using Louis Armstrong New Orleans Intl altimeter setting.

⚠ MISSED APPROACH: Climb to 1500 then climbing right turn to 2000 direct RQR VOR/DME and hold.

AWOS-3PT 125.45	NEW ORLEANS APP CON 125.5 350.35	UNICOM 122.7 (CTAF) 0
---------------------------	--	---------------------------------



CATEGORY	A	B	C	D
S-35	700-1	693 (700-1)	700-2 693 (700-2)	NA
C CIRCLING	700-1	693 (700-1)	820-2 1/2 813 (900-2 1/2)	NA

RESERVE, LOUISIANA
Amdt 1A 05JAN17

PORT OF SOUTH LOUISIANA EXEC RGNL (APS)
30°05'N-90°35'W

VOR RWY 35

SC-4, 22 FEB 2024 to 21 MAR 2024

SC-4, 22 FEB 2024 to 21 MAR 2024