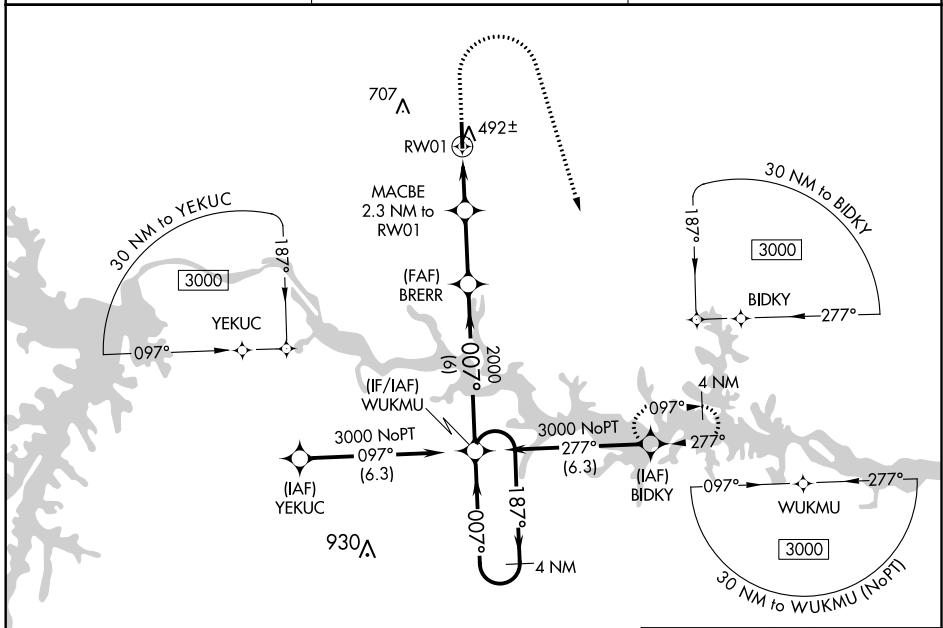


WAAS CH 63118 W01A	APP CRS 007°	Rwy Idg TDZE 417 Apt Elev 441	5002
--	------------------------	---	-------------

RNAV (GPS) RWY 1

MECKLENBURG-BRUNSWICK RGNL (A/C)

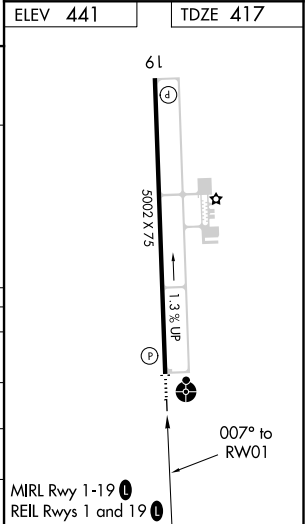
<p>▼ For uncompensated Baro-VNAV systems, LNAV/VNAV NA below -15°C (5°F) or above 54°C (130°F). DME/DME RNP-0.3 NA. Rwy 1 helicopter visibility reduction below ¾ SM NA. For inop ALS, increase LPV all visibility to 1½ SM.</p>	<p>ODALS</p>	<p>MISSED APPROACH: Climb to 900 then climbing right turn to 3000 direct BIDKY and hold.</p>
<p>AWOS-3 127.525</p>	<p>WASHINGTON CENTER 118.75 377.1</p>	<p>UNICOM 122.8 (CTAF) 0</p>



NE-3, 06 OCT 2022 to 03 NOV 2022

NE-3, 06 OCT 2022 to 03 NOV 2022

		ELEV 441	TDZE 417	
<p>4 NM Holding Pattern</p> <p>WUKMU</p> <p>3000 ← 187° → 007° → 007°</p> <p>GP 3.00° TCH 51</p>		<p>VGSI and RNAV glidepath not coincident (VGSI Angle 3.00/TCH 40).</p> <p>900 3000 BIDKY</p> <p>* LNAV only.</p>	<p>BRERR 2000</p> <p>MACBE 2.3 NM to RW01</p> <p>* 1.1 NM to RW01</p> <p>RW01</p> <p>6 NM → 2.6 NM → 1.2 NM → 1.1 NM</p>	
CATEGORY	A	B	C	D
LPV DA		714-1	297 (300-1)	
LNAV/VNAV DA		692-1	275 (300-1)	
LNAV MDA		760-1	343 (400-1)	
CIRCLING	860-1 419 (500-1)	900-1 459 (500-1)	1060-1¾ 619 (700-1¾)	1060-2 619 (700-2)



WAAS CH 93718 W19A	APP CRS 187°	Rwy Idg TDZE Apt Elev	5002 441 441
--	------------------------	-----------------------------	---

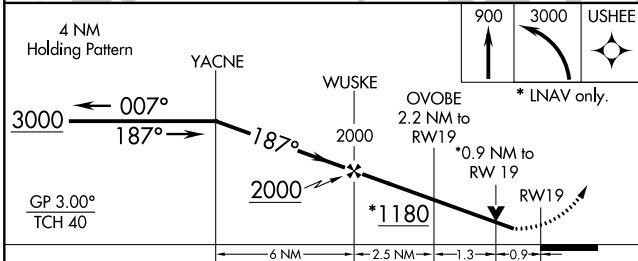
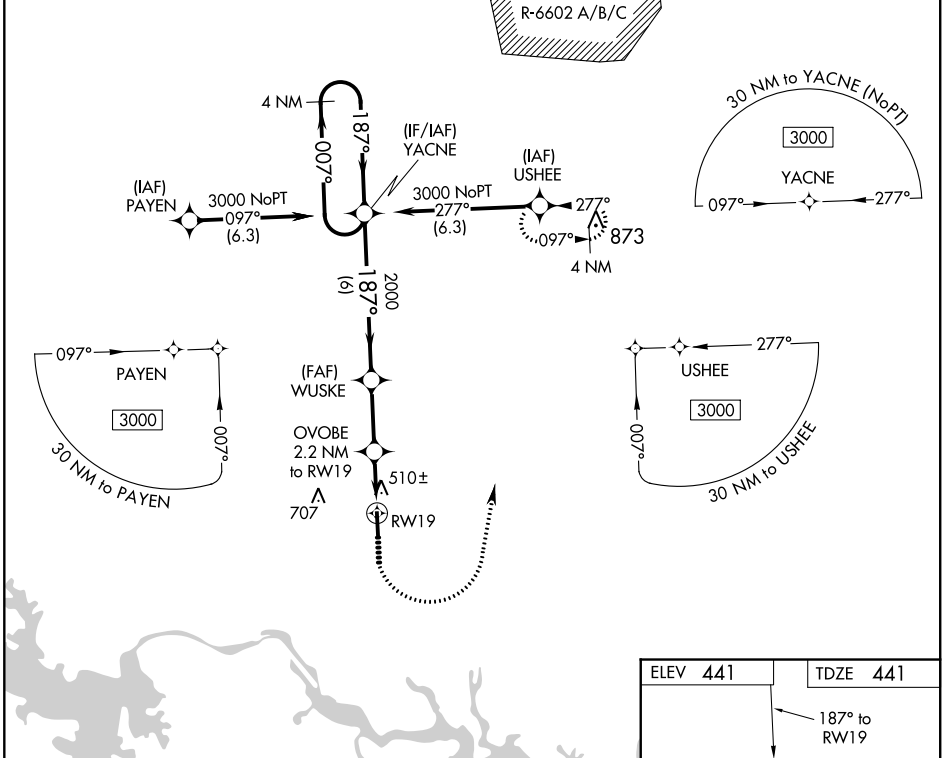
RNAV (GPS) RWY 19

MECKLENBURG-BRUNSWICK RGNL (AVC)

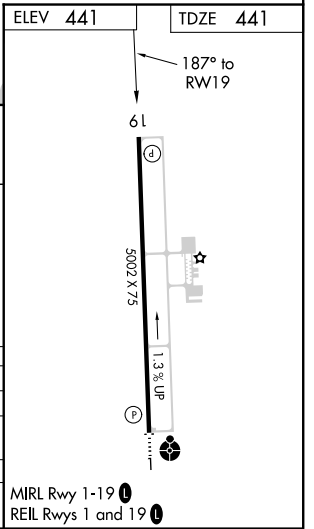
▽ For uncompensated Baro-VNAV systems, LNAV/VNAV NA below -1.5°C (5°F) or above 54°C (130°F). DME/DME RNP-0.3 NA. Rwy 19 helicopter visibility reduction below ¾ SM NA.

MISSED APPROACH: Climb to 900 then climbing left turn to 3000 direct USHEE and hold.

AWOS-3 127.525	WASHINGTON CENTER 118.75 377.1	UNICOM 122.8 (CTAF) 0
--------------------------	--	---------------------------------



CATEGORY	A	B	C	D
LPV DA		691-1	250 (300-1)	
LNAV/VNAV DA		710-1	269 (300-1)	
LNAV MDA		760-1	319 (400-1)	
CIRCLING	860-1 419 (500-1)	900-1 459 (500-1)	1060-1 ¾ 619 (700-1¾)	1060-2 619 (700-2)



NE-3, 06 OCT 2022 to 03 NOV 2022

NE-3, 06 OCT 2022 to 03 NOV 2022