

HI-TACAN RWY 20

WESTFIELD/SPRINGFIELD, MASSACHUSETTS

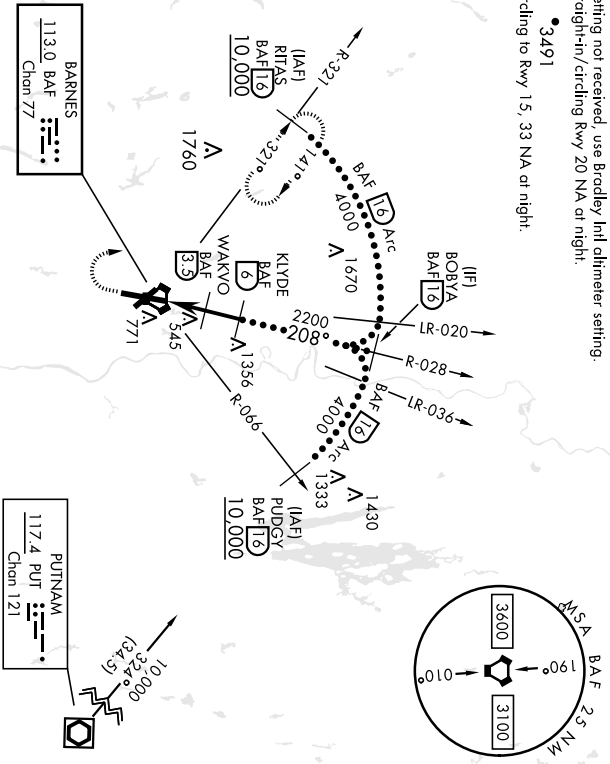
WESTFIELD-BARNES RGNL (KBAF)

VORTAC BAF 113.0 Chen 77	APCH CRS 208°	Rwy Idg 267 THRE	APpl Elev 270	AL-446 [USAF]	MAASR AS	MISSED APPROACH: Climb to 1300, then climbing right turn to 4000 via hdg 010° and BAF VORTAC R-321 to RITAS and hold.
* When ALS inop, increase CAT CDE vis to 1½ miles. ** When ALS inop, increase CAT CDE vis to 1½ miles.						

ATIS 127.1 263.15	BRADLEY APP CON 125.35 281.5	WESTFIELD TOWER * 118.9 (CTAF) 251.1	GND CON 121.7 289.4
-----------------------------	--	---	-------------------------------

When Id altimeter setting not received, use Bradley Intl altimeter setting.
 When VGSi inop, straight-in/circling Rwy 20 NA at night.

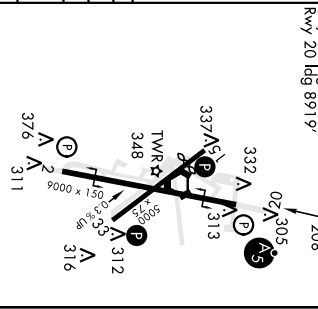
• 3491
 When VGSi inop, circling to Rwy 15, 33 NA at night.



EMERG SAFE ALT 100 NM 7000

1300	4000	RITAS R-321 19	VGSi and descent angles not coincident.	BOBYA R-028 16

CATEGORY	C	D	E
	800/55	533	(600-1¼)
S-20 *	1160-2¾	1160-3	1640-3
CIRCLING	890 (900-2¾)	890 (900-3)	1370 (1400-3)
BRADLEY INTL ALTIMETER			
S-20 **	840-1¾	573	(600-1¾)
CIRCLING	1200-2¾	1200-3	1680-3
	930 (1000-2¾)	930 (1000-3)	1410 (1500-3)



WESTFIELD/SPRINGFIELD, MASSACHUSETTS
 Andh 5A 02MAY13
 WESTFIELD-BARNES RGNL (KBAF)
 HI-TACAN RWY 20

WAAS CH 77817 W02A	APP CRS 024°	Rwy Idg TDZE Apt Elev	9000 264 270
--	------------------------	-----------------------------	---

RNAV (GPS) RWY 2

WESTFIELD-BARNES RGNL (BAF)

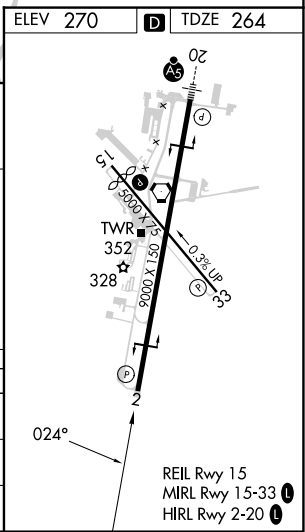
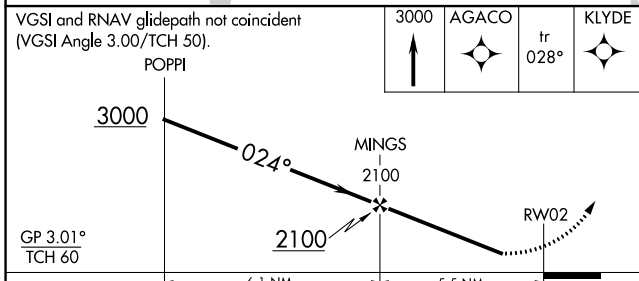
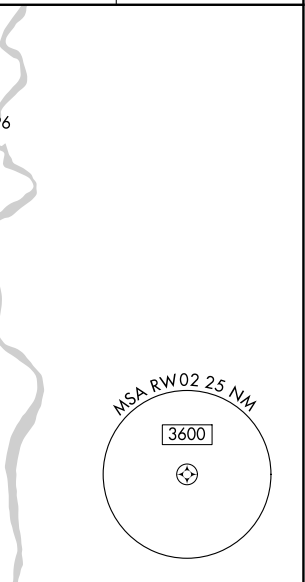
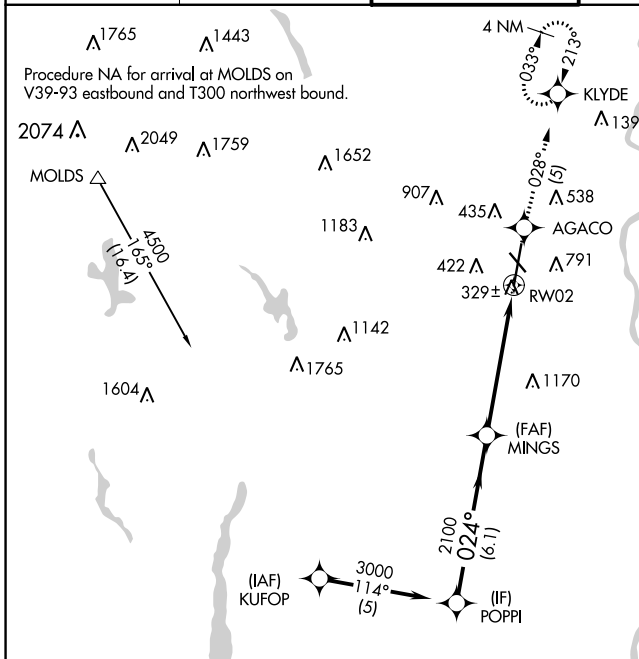
RNP APCH.

Baro-VNAV NA when using Bradley Intl altimeter setting. For uncompensated Baro-VNAV systems, LNAV/VNAV NA below -15°C or above 54°C.

⚠ -21°C When local altimeter setting not received, use Bradley Intl altimeter setting and increase all DA 44 feet and all MDA 60 feet; increase LNAV/VNAV all Cats visibility ¼ mile. Rwy 2 helicopter visibility reduction below ¾ SM NA.

MISSED APPROACH: Climb to 3000 direct AGACO and on track 028° to KLYDE and hold, continue climb-in-hold to 3000.

ATIS 127.1 263.15	BRADLEY APP CON 125.35 281.5	WESTFIELD TOWER* 118.9 (CTAF) 0 251.1	GND CON 121.7 289.4	CLNC DEL 121.7
-----------------------------	--	---	-------------------------------	--------------------------



CATEGORY	A	B	C	D	E
LPV DA	515-1 251 (300-1)				
LNAV/VNAV DA	858-2 594 (600-2)				
LNAV MDA	1360-1¼ 1096 (1100-1¼)	1360-1½ 1096 (1100-1½)	1360-3	1096 (1100-3)	

NE-1, 22 FEB 2024 to 21 MAR 2024

NE-1, 22 FEB 2024 to 21 MAR 2024

WAAS CH 86405 W20A	APP CRS 204°	Rwy Idg TDZE Apt Elev	8919 270 270
--	------------------------	-----------------------------	---

RNAV (GPS) RWY 20

WESTFIELD-BARNES RGNL (B.A.F.)

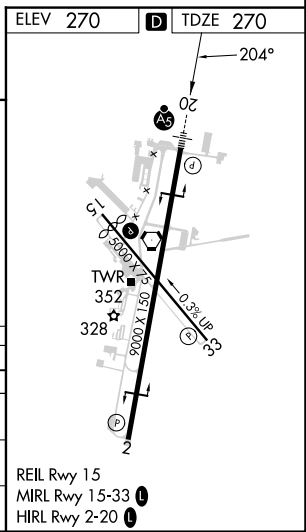
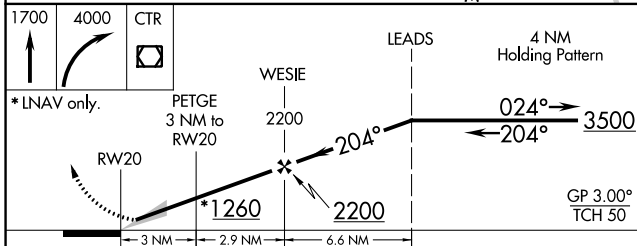
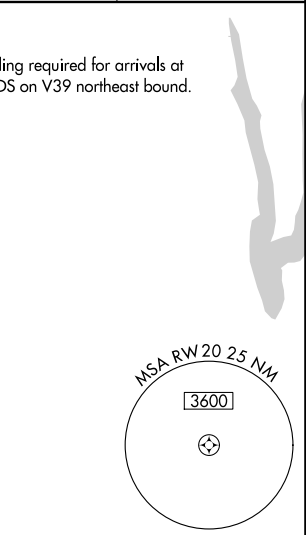
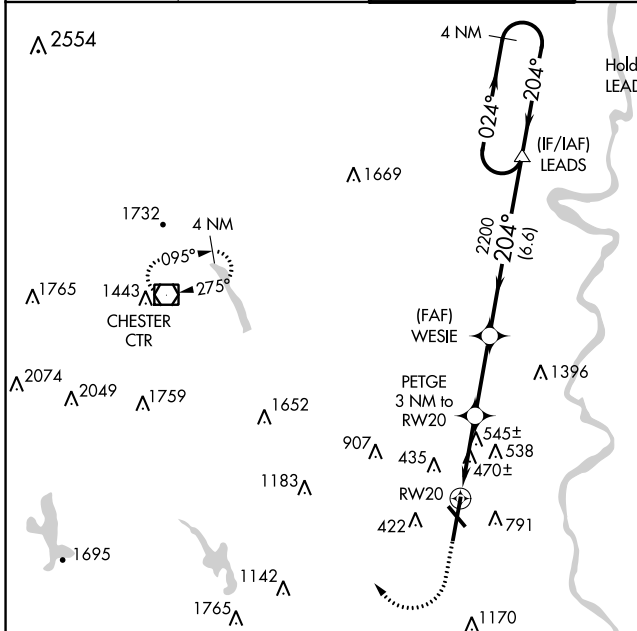
⚠ Baro-VNAV NA when using Bradley Intl altimeter setting. For uncompensated Baro-VNAV systems, LNAV/VNAV NA below -1 5°C (5°F) or above 54°C (130°F). DME/DME RNP-0.3 NA. When local altimeter setting not received, use Bradley Intl altimeter setting and increase LPV DA to 561; LNAV/VNAV DA to 996 and increase all Cats visibility to 2¼; all MDA 60 feet and LNAV Cats B, C, D and E visibility to 1¼. For inoperative MALSR, increase LPV Cat E visibility to RVR 4000, LNAV/VNAV all Cats visibility to 2½, LNAV Cat E visibility to 1½. Night landing: Rwy 15 NA.

❄ -21°C

MALSR

MISSED APPROACH:
Climb to 1700 then climbing right turn to 4000 direct CTR VOR/DME and hold.

ATIS 127.1 263.15	BRADLEY APP CON 125.35 281.5	WESTFIELD TOWER * 118.9 (CTAF) 0 251.1	GND CON 121.7 289.4	CLNC DEL 121.7
-----------------------------	--	---	-------------------------------	--------------------------



CATEGORY	A	B	C	D	E
LPV DA		520/24	250 (300-½)		
LNAV/VNAV DA		955-1⅞	685 (700-1⅞)		
LNAV MDA	800/24	530 (600-½)	800/55	530 (600-1)	
C CIRCLING	1160-1¼	890 (900-1¼)	1160-2¾ 890 (900-2¾)	1660-3	1390 (1400-3)

NE-1, 22 FEB 2024 to 21 MAR 2024

NE-1, 22 FEB 2024 to 21 MAR 2024

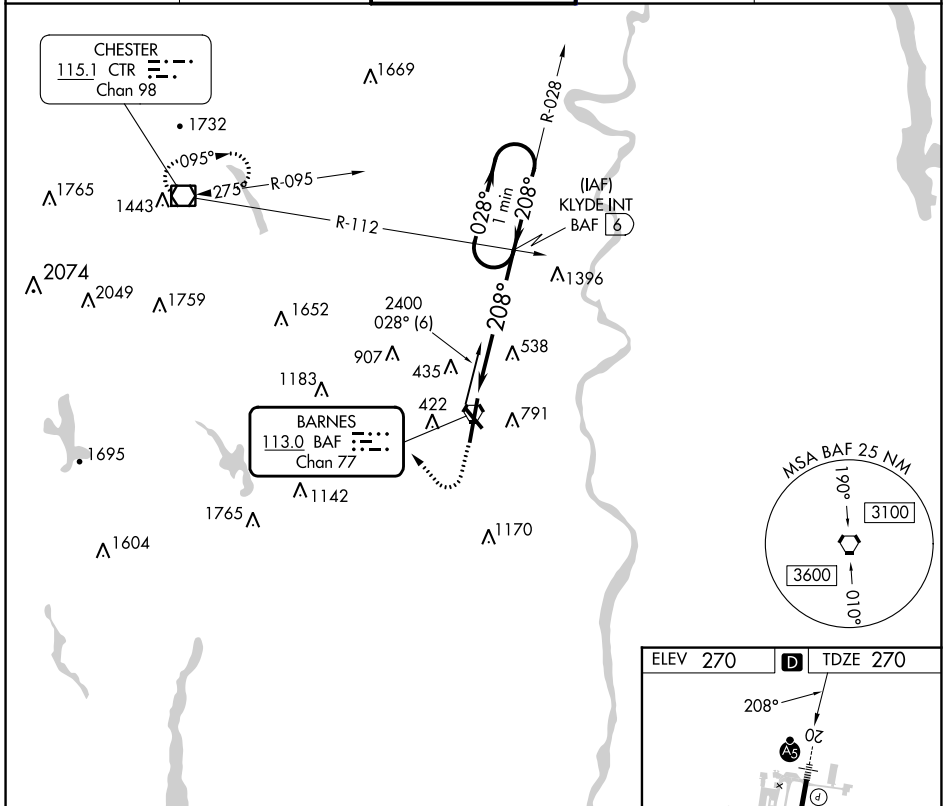
BAF VORTAC 113.0 Chan 77	APP CRS 208°	Rwy Idg 8919 TDZE 270 Apt Elev 270
---------------------------------------	------------------------	---

VOR RWY 20

WESTFIELD-BARNES RGNL (BAF)

-21°C	For inoperative MALS, increase Cat A/B visibility to RVR 5000. Night landing: Rwy 15 NA.	MALS R 	MISSED APPROACH: Climb to 1200, then climbing right turn to 4000 direct CTR VOR/DME and hold, continue climb in hold to 4000.
-------	--	------------	---

ATIS 127.1 263.15	BRADLEY APP CON 125.35 281.5	WESTFIELD TOWER* 118.9 (CTAF) 0 251.1	GND CON 121.7 289.4	CLNC DEL 121.7
-----------------------------	--	---	-------------------------------	--------------------------



NE-1, 22 FEB 2024 to 21 MAR 2024

NE-1, 22 FEB 2024 to 21 MAR 2024

1200 	4000 	CTR 	KLYDE INT BAF 6 One Minute Holding Pattern
		208° → 2400 ← 208° 2100 3.04° TCH 43 VGSI and descent angles not coincident (VGSI Angle 3.00/TCH 50).	
CATEGORY	A	B	D
S-20	940/40	670 (700-3/4)	940/60 670 (700-1 1/4)
CIRCLING	1160-1 1/4	890 (900-1 1/4)	1160-2 3/4 890 (900-2 3/4)

ELEV 270	D	TDZE 270
----------	---	----------

REIL Rwy 15
MIRL Rwy 15-33
HIRL Rwy 2-20

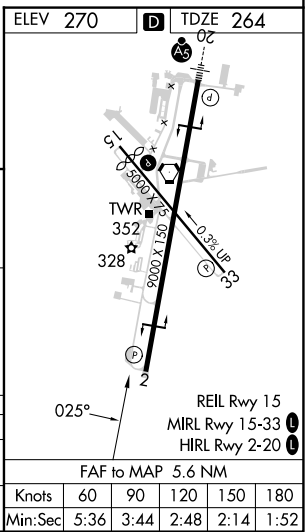
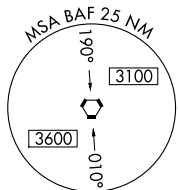
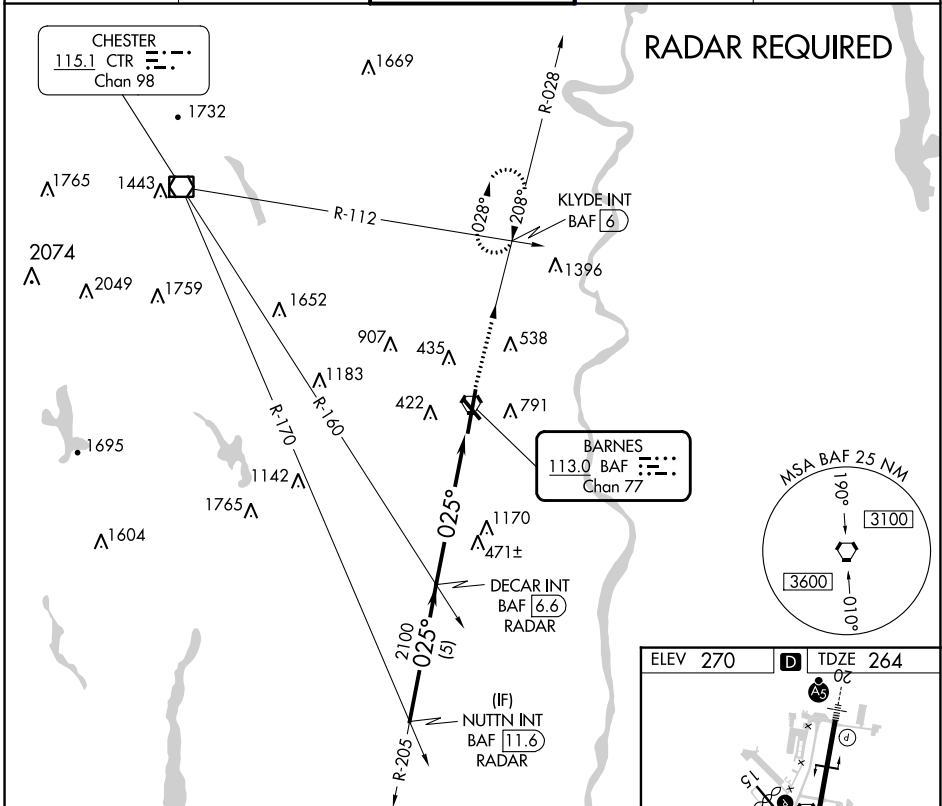
BAF VORTAC	APP CRS	Rwy Idg	9000
113.0	025°	TDZE	264
Chan 77		Apt Elev	270

VOR or TACAN RWY 2

WESTFIELD-BARNES RGNL (BAF)

Night landing: Rwy 15 NA. Helicopter visibility reduction below 3/4 SM NA.	MISSED APPROACH: Climb to 3000 via the BAF VORTAC R-028 to KLYDE INT and hold.
---	--

ATIS 127.1 263.15	BRADLEY APP CON 125.35 281.5	WESTFIELD TOWER* 118.9 (CTAF) 0 251.1	GND CON 121.7 289.4	CLNC DEL 121.7
-----------------------------	--	---	-------------------------------	--------------------------



NUTTN INT BAF 11.6 RADAR 3000 025° 2100 3.02° TCH 43 5.6 NM 5 NM	VGSI and descent angles not coincident (VGSI Angle 3.00/TCH 50).		3000 BAF R-028 KLYDE INT		
	DECAR INT BAF 6.6 RADAR	BAF 1 BAF VORTAC	(IF) NUTTN INT BAF 11.6 RADAR		
CATEGORY	A	B	C	D	E
S-2	780-1	516 (600-1)	780-1½ 516 (600-1½)	780-1¾	516 (600-1¾)
CIRCLING	1160-1¼	890 (900-1¼)	1160-2¾ 890 (900-2¾)	1660-3	1390 (1400-3)

NE-1, 22 FEB 2024 to 21 MAR 2024

NE-1, 22 FEB 2024 to 21 MAR 2024