

RNAV 1 - DME/DME/IRU or GPS.

RADAR required.

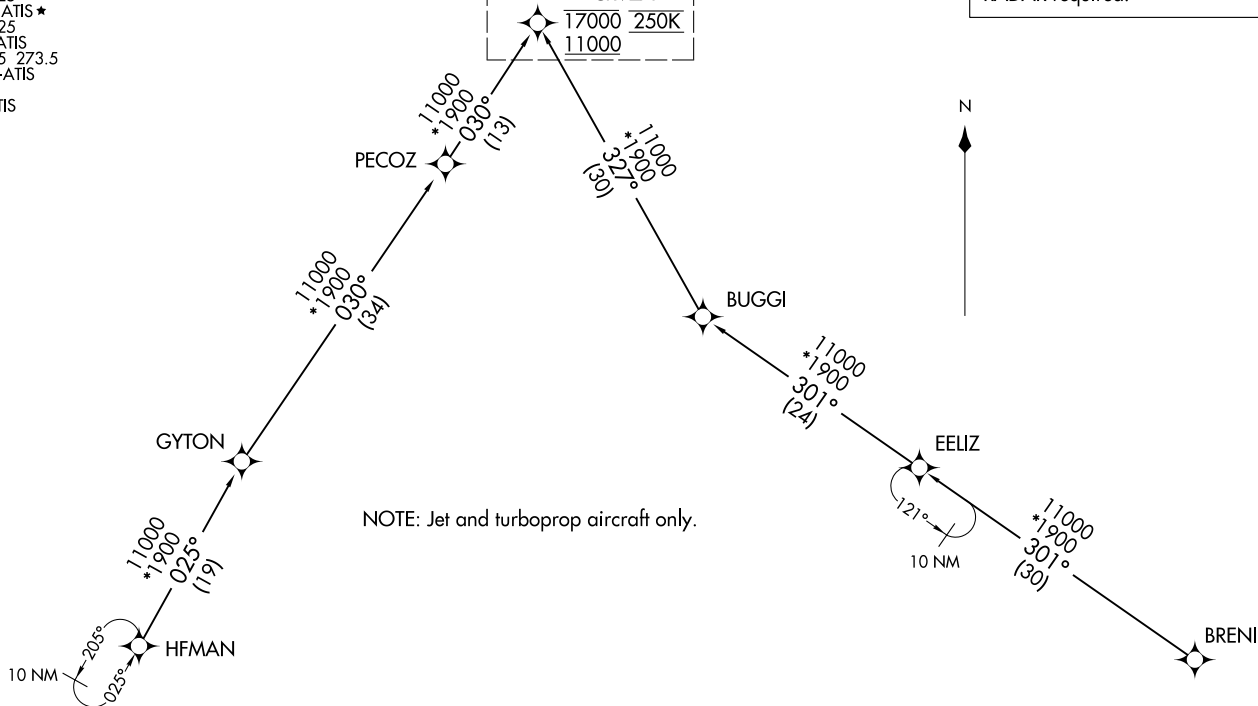
See following page for Arrival Routes	
CRVZA	
17000	250K
11000	

(CRVZA, CRVZA1) 24025  
AL-369 (FAA)  
CRVZA ONE ARRIVAL (RNAV) Transition Routes

SAN ANTONIO, TEXAS



NOTE: Jet and turboprop aircraft only.



SAN ANTONIO APP CON  
125.7 290.225  
BAZ ATIS  
119.325  
KRND ATIS ★  
290.525  
KSKF ATIS  
120.45 273.5  
SAT D-ATIS  
118.9  
SSF ATIS  
128.8

BRENI TRANSITION (BRENI.CRVZA1)  
EELIZ TRANSITION (EELIZ.CRVZA1)  
HFMAN TRANSITION (HFMAN.CRVZA1)

(CONTINUED ON FOLLOWING PAGE)

NOTE: Chart not to scale.

CRVZA ONE ARRIVAL (RNAV) Transition Routes

(CRVZA, CRVZA1) 25JAN24

SAN ANTONIO, TEXAS

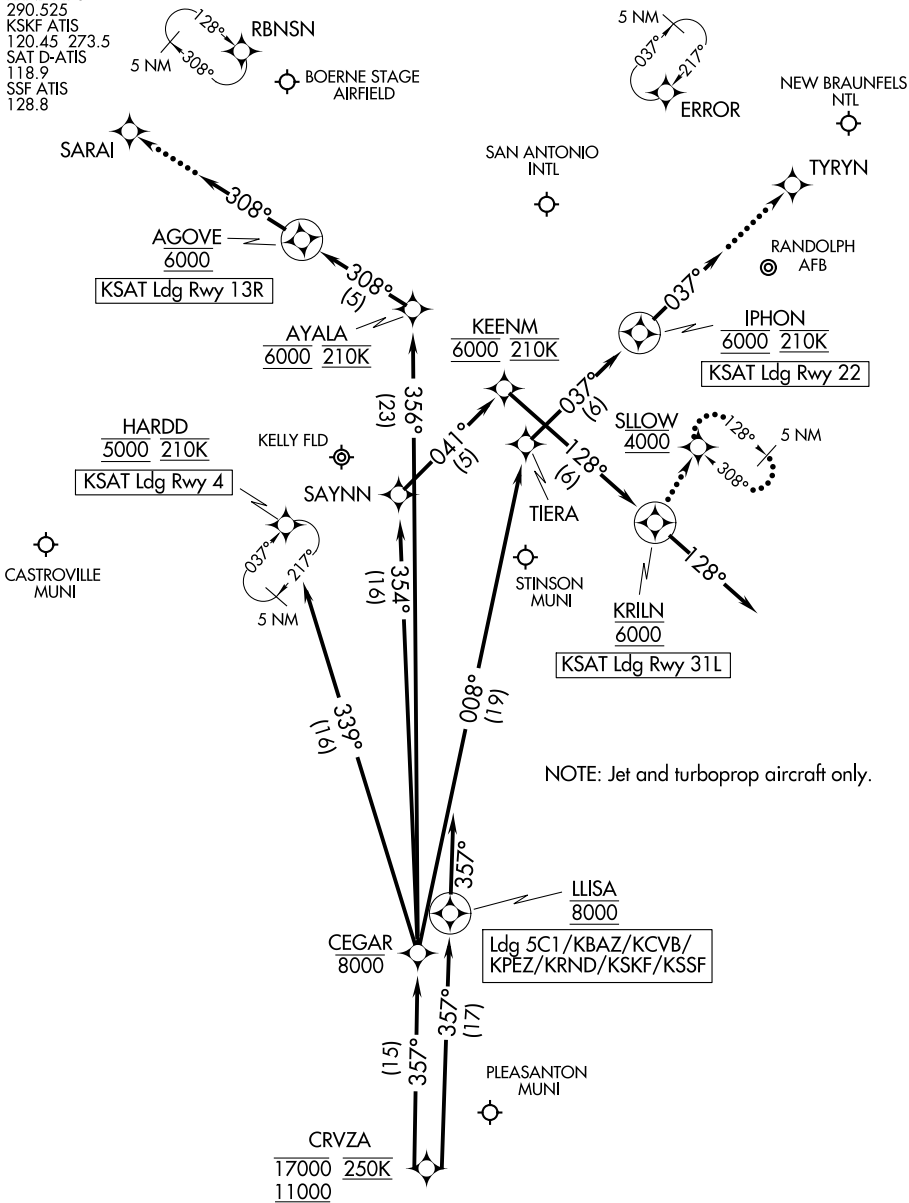
# CRVZA ONE ARRIVAL (RNAV) Arrival Routes

SAN ANTONIO, TEXAS

SAN ANTONIO APP CON  
 125.7 290.225  
 BAZ ATIS  
 119.325  
 KRND ATIS ★  
 290.525  
 KSKF ATIS  
 120.45 273.5  
 SAT D-ATIS  
 118.9  
 SSF ATIS  
 128.8

RNAV 1 - DME/DME/IRU or GPS.

RADAR required.



NOTE: Chart not to scale.

(CONTINUED ON FOLLOWING PAGE)

# CRVZA ONE ARRIVAL (RNAV) Arrival Routes

SAN ANTONIO, TEXAS

ARRIVAL ROUTE DESCRIPTION

SAN ANTONIO INTL (KSAT): From CRVZA on track 357° to cross CEGAR at or below 8000.

LANDING KSAT RUNWAY 4: From CEGAR on track 339° to cross HARDD at 5000 and at 210K. Expect ILS or LOC RWY 4 approach.

LANDING KSAT RUNWAY 13R: From CEGAR on track 356° to cross AYALA at 6000 and at 210K, then on track 308° to cross AGOVE at 6000, then on track 308°. Expect RADAR vectors to final approach course.

LANDING KSAT RUNWAY 22: From CEGAR on track 008° to TIERA, then on track 037° to cross IPHON at 6000 and at 210K, then on track 037°. Expect RADAR vectors to final approach course.

LANDING KSAT RUNWAY 31L: From CEGAR on track 354° to SAYNN, then on track 041° to cross KEENM at 6000 and at 210K, then on track 128° to cross KRILN at 6000, then on track 128°. Expect RADAR vectors to final approach course.

LANDING KSKF/KBAZ/KCVB/KSSF/KPEZ/5C1/KRND: From CRVZA on track 357° to cross LLISA at 8000, then on track 357°. Expect RADAR vectors to final approach course.

LOST COMMUNICATIONS

KSAT RUNWAY 13R: After AGOVE proceed to SARAI, then on ILS or LOC RWY 13R or RNAV (GPS) Y RWY 13R approach.

KSAT RUNWAY 22: After IPHON proceed to TYRYN, then on RNAV (GPS) Y RWY 22 approach.

KSAT RUNWAY 31L: After KRILN proceed to SLOW at 4000 and hold.

SC-3, 22 FEB 2024 to 21 MAR 2024

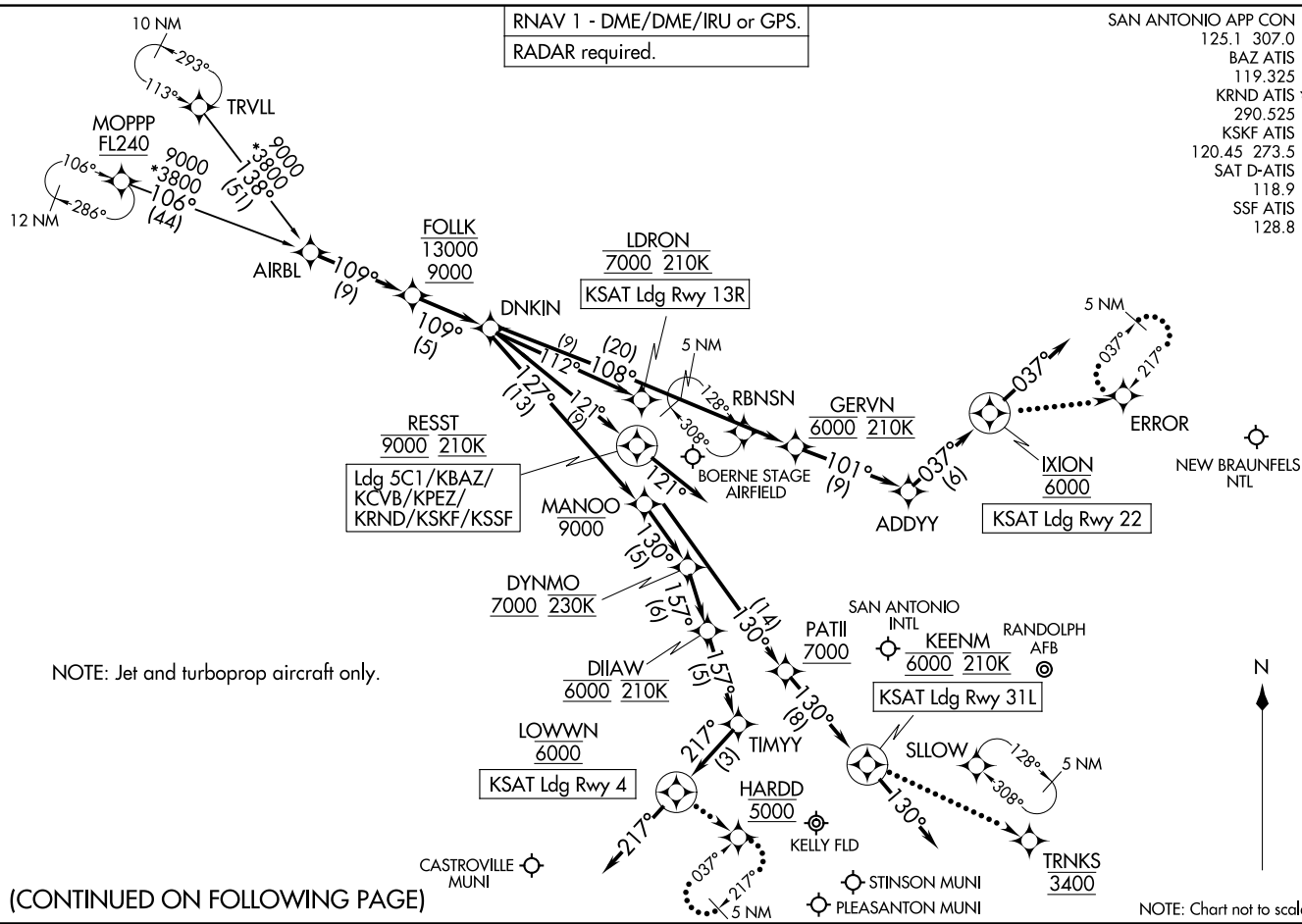
SC-3, 22 FEB 2024 to 21 MAR 2024

DNKIN ONE ARRIVAL (RNAV)  
(AIRBL, DNKINI) 251AN24

(AIRBL, DNKINI) 24025  
DNKIN ONE ARRIVAL (RNAV)

AL-369 (FAA)

SAN ANTONIO, TEXAS



SAN ANTONIO, TEXAS

ARRIVAL ROUTE DESCRIPTION

SAN ANTONIO INTL (KSAT):

From AIRBL on track 109° to cross FOLLK between 9000 and 13000, then on track 109° to DNKIN.

LANDING KSAT RUNWAY 4: From DNKIN on track 127° to cross MANOO at or below 9000, then on track 130° to cross DYNMO at or above 7000 and at 230K, then on track 157° to cross DIIAW at 6000 and at 210K, then on track 157° to TIMYY, then on track 217° to cross LOWWN at 6000, then on track 217°. Expect RADAR vectors to final approach course.

LANDING KSAT RUNWAY 13R: From DNKIN on track 112° to cross LDRON at 7000 and at 210K. Expect ILS or LOC Rwy 13R approach.

LANDING KSAT RUNWAY 22: From DNKIN on track 108° to cross GERVN at 6000 and at 210K, then on track 101° to ADDYY, then on track 037° to cross IXION at 6000, then on track 037°. Expect RADAR vectors to final approach course.

LANDING KSAT RUNWAY 31L: From DNKIN on track 127° to cross MANOO at or below 9000, then on track 130° to cross PATII at or above 7000, then on track 130° to cross KEENM at 6000 and at 210K, then on track 130°. Expect RADAR vectors to final approach course.

LANDING KSKF, KBAZ, KCVB, KSSF, KPEZ, 5C1, KRND: From AIRBL on track 109° to cross FOLLK between 9000 and 13000, then on track 109° to DNKIN, then on track 121° to cross RESST at 9000 and at 210K, then on track 121°. Expect RADAR vectors to final approach course.

LOST COMMUNICATIONS

RUNWAY 4: After LOWWN, proceed to HARDD at 5000 and hold.

RUNWAY 22: After IXION, proceed direct to ERROR and hold.

RUNWAY 31L: After KEENM proceed to TRNKS at 3400, then on ILS or LOC Rwy 31L or RNAV (GPS) Y Rwy 31L approach.

SC-3, 22 FEB 2024 to 21 MAR 2024

SC-3, 22 FEB 2024 to 21 MAR 2024

POPPO ONE ARRIVAL (RNAV) Transition Routes

SAN ANTONIO, TEXAS

RNAV 1 - DME/DME/IRU or GPS.

RADAR required.

SAN ANTONIO APP CON  
 125.1 307.0  
 BAZ ATIS  
 119.325  
 KRND ATIS\*  
 290.525  
 KSKF ATIS  
 120.45 273.5  
 SAT D-ATIS  
 118.9  
 SSF ATIS  
 128.8

NOTE: Jet and turboprop aircraft only.

PRTZY

9000  
 \*3700  
 154°  
 (176)

MUGSY

9000  
 \*3700  
 154°  
 (271)

11 NM

PPNUT FL220

DILLO FL220

9000  
 \*3700  
 154°  
 (511)

9000  
 \*3700  
 172°  
 (411)

10 NM

293°  
 113°

TRVLL

9000  
 \*3700  
 113°  
 (63)

POPPO  
 10000

See following page for arrival routes

DILLO TRANSITION (DILLO.POPPO1)

PPNUT TRANSITION (PPNUT.POPPO1)

PRTZY TRANSITION (PRTZY.POPPO1)

TRVLL TRANSITION (TRVLL.POPPO1)

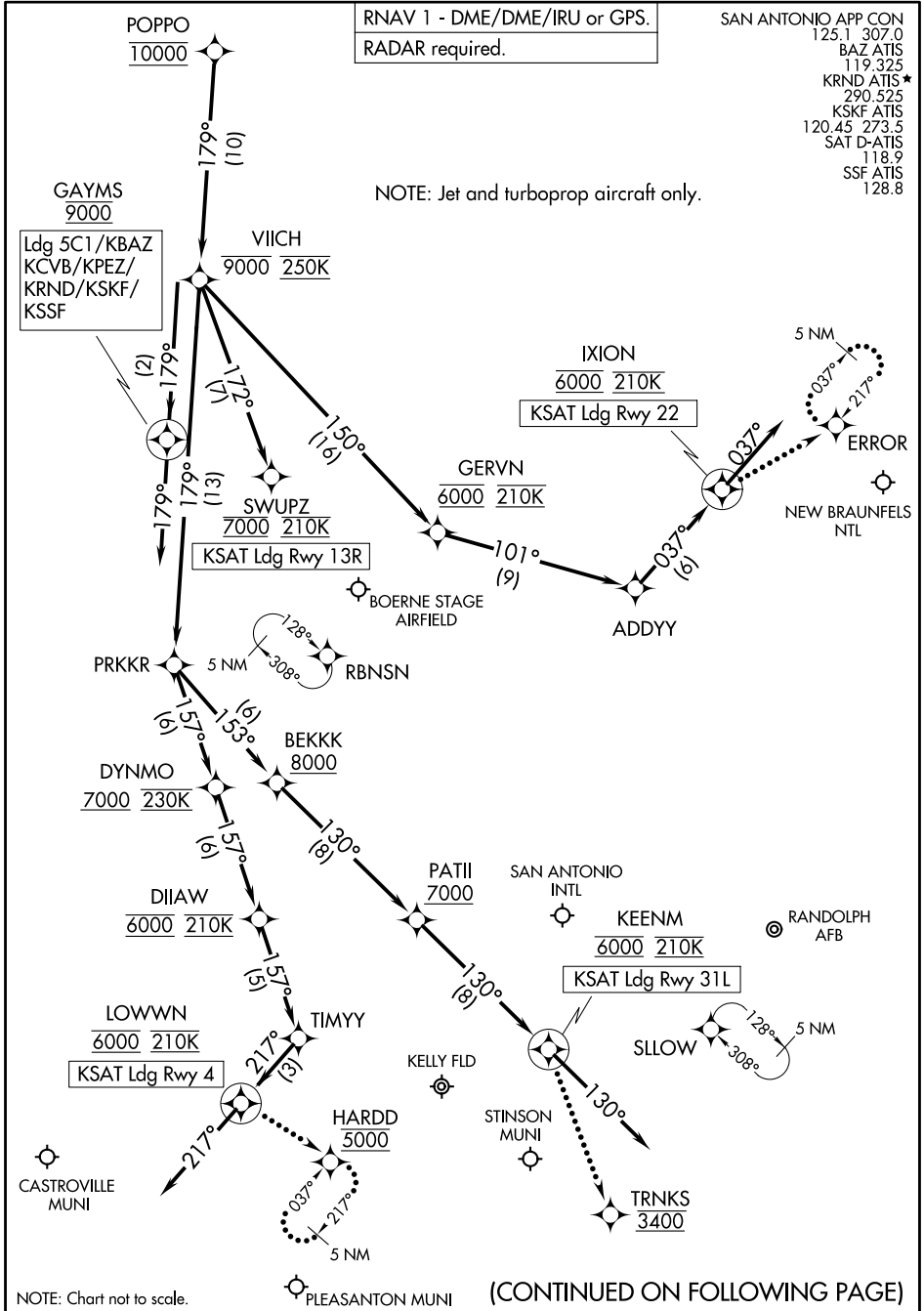
NOTE: Chart not to scale. (CONTINUED ON FOLLOWING PAGE)

POPPO ONE ARRIVAL (RNAV) Transition Routes

SAN ANTONIO, TEXAS

POPPO ONE ARRIVAL (RNAV) Arrival Routes

SAN ANTONIO, TEXAS



SC-3, 22 FEB 2024 to 21 MAR 2024

SC-3, 22 FEB 2024 to 21 MAR 2024

NOTE: Chart not to scale.

(CONTINUED ON FOLLOWING PAGE)

POPPO ONE ARRIVAL (RNAV) Arrival Routes

SAN ANTONIO, TEXAS

ARRIVAL ROUTE DESCRIPTION

SAN ANTONIO INTL (KSAT): From POPPO on track 179° to cross VIICH at or below 9000 and at 250K.

LANDING KSAT RUNWAY 4: From VIICH on track 179° to PRKKR, then on track 157° to cross DYNMO at or above 7000 and at 230K, then on track 157° to cross DIIAW at 6000 and at 210K, then on track 157° to TIMYY, then on track 217° to cross LOWWN at 6000 and at 210K, then on track 217°. Expect RADAR vectors to final approach course.

LANDING KSAT RUNWAY 13R: From VIICH on track 172° to cross SWUPZ at 7000 and at 210K. Expect ILS or LOC RWY 13R approach.

LANDING KSAT RUNWAY 22: From VIICH on track 150° to cross GERVN at 6000 and at 210K, then on track 101° to ADDYY, then on track 037° to cross IXION at 6000 and at 210K, then on track 037°. Expect RADAR vectors to final approach course.

LANDING KSAT RUNWAY 31L: From VIICH on track 179° to PRKKR, then on track 153° to cross BEKKK at or above 8000, then on track 130° to cross PATII at or above 7000, then on track 130° to cross KEENM at 6000 and at 210K, then on track 130°. Expect RADAR vectors to final approach course.

LANDING KSKF/KBAZ/KCVB/KSSF/KPEZ/5C1/KRND: From POPPO on track 179° to cross VIICH at or below 9000 and at 250K, then on track 179° to cross GAYMS at 9000, then on track 179°. Expect RADAR vectors to final approach course.

LOST COMMUNICATIONS

KSAT RUNWAY 4: After LOWWN proceed to HARDD at 5000 and hold.

KSAT RUNWAY 22: After IXION proceed to ERROR and hold.

KSAT RUNWAY 31L: After KEENM proceed to TRNKS at 3400, then on ILS or LOC Rwy 31L or RNAV (GPS) Y Rwy 31L approach.

SC-3, 22 FEB 2024 to 21 MAR 2024

SC-3, 22 FEB 2024 to 21 MAR 2024



(MARC'S, QERVO1) 25JAN24

QERVO ONE ARRIVAL (RNAV) Transition Routes

SAN ANTONIO, TEXAS

SAN ANTONIO APP CON  
 127.1 269.1  
 BAZ ATIS  
 119.325  
 KRND ATIS \*  
 290.525  
 KSKF ATIS  
 120.45 273.5  
 SAT D-ATIS  
 118.9  
 SSF ATIS  
 128.8

RNAV 1-DME/DME/IRU or GPS.  
 RADAR required.

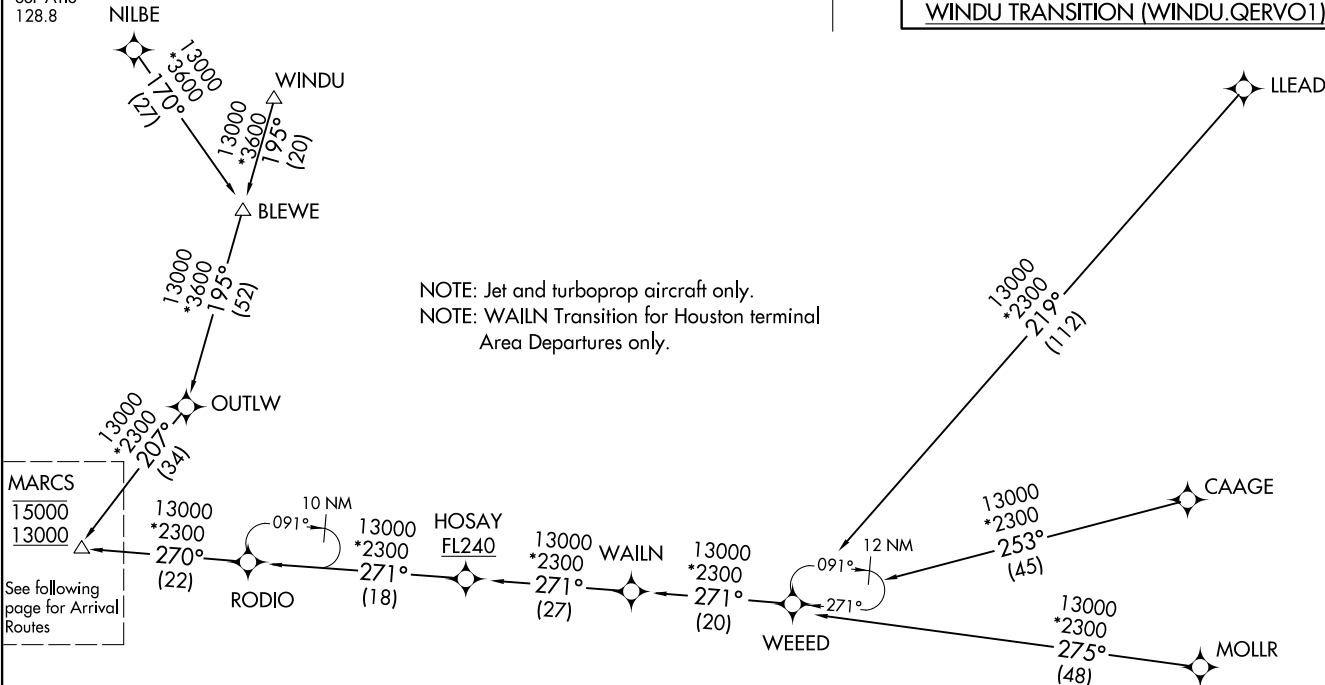


BLEWE TRANSITION (BLEWE.QERVO1)  
 CAAGE TRANSITION (CAAGE.QERVO1)  
 LLEAD TRANSITION (LLEAD.QERVO1)  
 MOLLR TRANSITION (MOLLR.QERVO1)  
 NILBE TRANSITION (NILBE.QERVO1)  
 WAILN TRANSITION (WAILN.QERVO1)  
 WINDU TRANSITION (WINDU.QERVO1)

(MARC'S, QERVO1) 24025

AL-369 (FAA)  
 QERVO ONE ARRIVAL (RNAV) Transition Routes

SAN ANTONIO, TEXAS



NOTE: Jet and turboprop aircraft only.  
 NOTE: WAILN Transition for Houston terminal  
 Area Departures only.

NOTE: Chart not to scale.

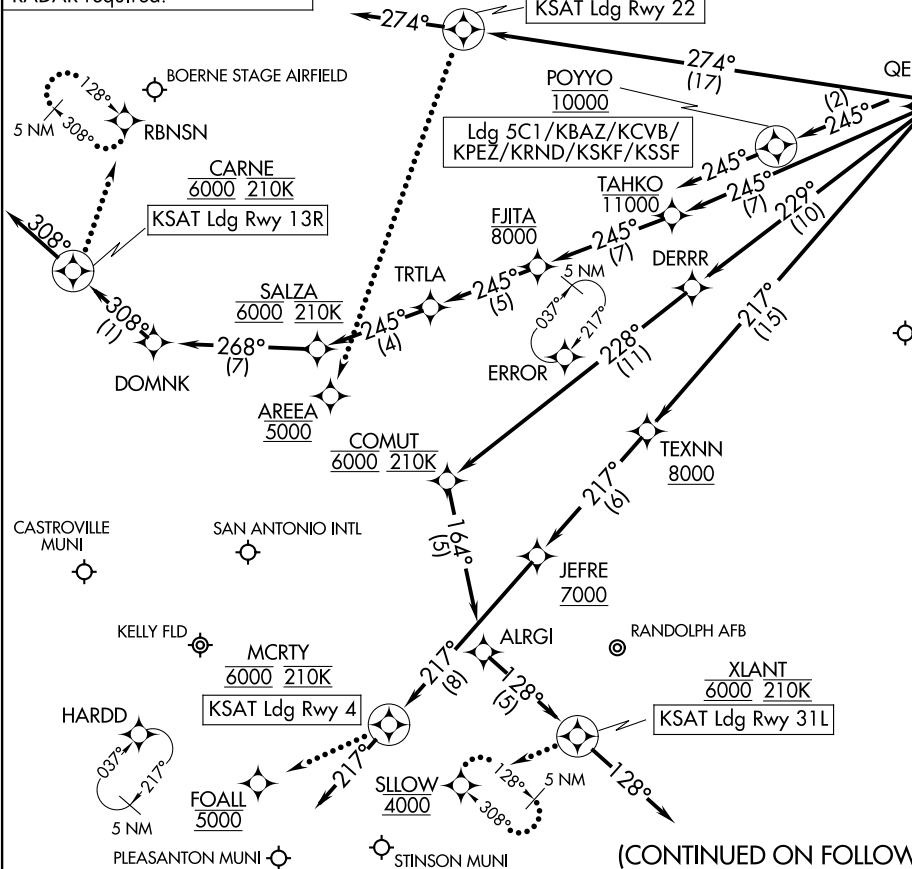
(CONTINUED ON FOLLOWING PAGE)

QERVO ONE ARRIVAL (RNAV) Arrival Routes  
(MARC3, QERVO1) 25JAN24

QERVO ONE ARRIVAL (RNAV) Arrival Routes

SAN ANTONIO, TEXAS

RNAV 1-DME/DME/IRU or GPS.  
RADAR required.



NOTE: Jet and turboprop aircraft only.  
NOTE: WAILN Transition for Houston terminal Area Departures only.

(CONTINUED ON FOLLOWING PAGE)

NOTE: Chart not to scale.

(MARC3, QERVO1) 24025  
QERVO ONE ARRIVAL (RNAV) Arrival Routes

AL369 (FAA)

SAN ANTONIO, TEXAS

SAN ANTONIO APP CON  
127.1 269.1  
BAZ ATIS  
119.325  
KRND ATIS \*  
290.525  
KSKF ATIS  
120.45 273.5  
SAT D-ATIS  
118.9  
SSF ATIS  
128.8

## ARRIVAL ROUTE DESCRIPTION

SAN ANTONIO INTL (KSAT): From MARCS on track 245° to cross PGOUT between 11000 and 13000 and at 280K, then on track 245° to QERVO.

LANDING KSAT RUNWAY 4: From QERVO on track 217° to cross TEXNN at or above 8000, then on track 217° to cross JEFRE at or above 7000, then on track 217° to cross MCRTY at 6000 and at 210K, then on track 217°. Expect RADAR vectors to final approach course.

LANDING KSAT RUNWAY 13R: From QERVO on track 245° to cross TAHKO at or below 11000, then on track 245° to cross FJITA at or below 8000, then on track 245° to TRTLA, then on track 246° to cross SALZA at 6000 and at 210K, then on track 268° to DOMNK, then on track 308° to cross CARNE at 6000 and at 210K, then on track 308°. Expect RADAR vectors to final approach course.

LANDING KSAT RUNWAY 22: From QERVO on track 274° to cross TRITP at 7000 and at 210K, then on track 274°. Expect RADAR vectors to final approach course.

LANDING KSAT RUNWAY 31L: From QERVO on track 229° to DERRR, then on track 228° to cross COMUT at 6000 and at 210K, then on track 164° to ALRGI, then on track 128° to cross XLANT at 6000 and at 210K, then on track 128°. Expect RADAR vectors to final approach course.

LANDING KSKF/KBAZ/KCVB/KSSF/KPEZ/5C1/KRND: From MARCS on track 245° to cross PGOUT between 11000 and 13000 and at 280K, then on track 245° to QERVO, then on track 245° to cross POYYO at 10000, then on track 245°. Expect RADAR vectors to final approach course.

LOST COMMUNICATIONS:

KSAT RUNWAY 4: After MCRTY, proceed to FOALL at 5000, then on ILS or LOC RWY 4 or RNAV (GPS) Y RWY 4 approach.

KSAT RUNWAY 13R: After CARNE, proceed to RBNSN and hold.

KSAT RUNWAY 22: After TRITP proceed to AREEA at 5000, then on RNAV (GPS) Y RWY 22 approach.

KSAT RUNWAY 31L: After XLANT, proceed to SLOW at 4000 and hold.