

(BEMAR2.BEMAR) 16315

SL-5475 (FAA)

VIRGINIA TECH/MONTGOMERY EXECUTIVE (BCB)

# BEMAR TWO DEPARTURE (RNAV)

BLACKSBURG, VIRGINIA

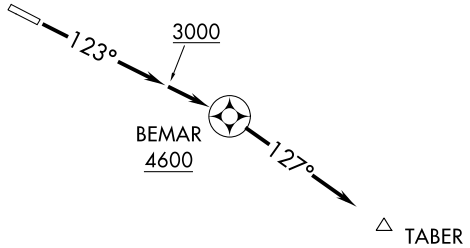
AWOS-3  
133.325  
CTAF  
123.05  
ROANOKE DEP CON  
126.9 339.8  
ROANOKE CLNC DEL  
124.85

**TOP ALTITUDE:  
6000**

ROANOKE  
ROA

WOODRUM  
ODR

PULASKI  
PSK



NOTE: GPS required.  
NOTE: RNAV-1.  
NOTE: Radar required.

### TAKEOFF OBSTACLE NOTES:

Rwy 12: Trees beginning 19' from DER, 418' left of centerline, up to 100' AGL/2453' MSL.  
Trees beginning 242' from DER, 151' right of centerline, up to 100' AGL/2279' MSL.

### TAKEOFF MINIMUMS:

Rwy 30: NA-ATC.  
Rwy 12: 400-1¼ with minimum climb of 250' per NM to 4600  
or standard with minimum climb of 500' per NM to 3000.

NOTE: Chart not to scale.



### DEPARTURE ROUTE DESCRIPTION

TAKEOFF RUNWAY 12: Climb heading 123° to 3000, then direct BEMAR, cross BEMAR at or above 4600, then fly heading 127°, maintain 6000, expect radar vectors and clearance to filed altitude/flight level 10 minutes after departure.

**BEMAR TWO DEPARTURE (RNAV)**  
(BEMAR2.BEMAR) 10NOV16

BLACKSBURG, VIRGINIA

VIRGINIA TECH/MONTGOMERY EXECUTIVE (BCB)

NE-3, 21 JUN 2018 to 19 JUL 2018

NE-3, 21 JUN 2018 to 19 JUL 2018

(SETHY4.SETHY) 16315

SL-5475 (FAA)

VIRGINIA TECH/MONTGOMERY EXECUTIVE (BCB)

# SETHY FOUR DEPARTURE (RNAV)

BLACKSBURG, VIRGINIA

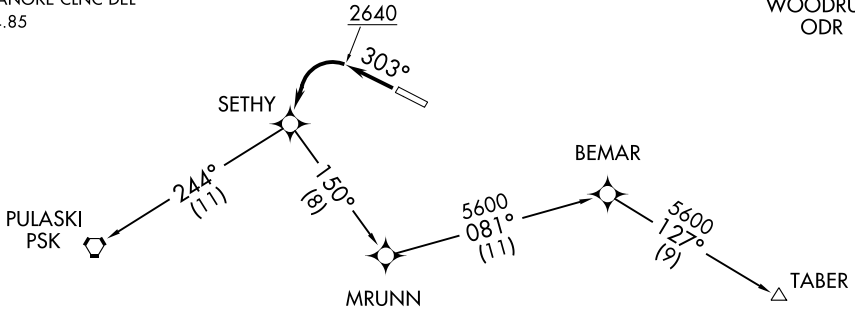
AWOS-3  
133.325  
CTAF  
123.05  
ROANOKE DEP CON  
126.9 339.8  
ROANOKE CLNC DEL  
124.85

**TOP ALTITUDE:  
6000**

NOTE: Aircraft on TABER transition,  
do not exceed 220K until  
passing SETHY.

ROANOKE  
ROA

WOODRUM  
ODR



- NOTE: GPS Required.
- NOTE: Radar Required.
- NOTE: RNAV-1.
- NOTE: When in Radar contact expect vectors to filed/assigned route.

### TAKEOFF MINIMUMS:

Rwy 12: NA-ATC.  
Rwy 30: Standard with minimum climb of 300' per NM to 2640.

### TAKEOFF OBSTACLE NOTES:

Rwy 30: Rising terrain, trees and poles beginning 3' from DER, 273' right of centerline, up to 45' AGL/2165' MSL. Rising terrain, trees, and poles beginning 90' from DER, 187' left of centerline, up to 100' AGL/ 2222' MSL. Vehicle on road beginning 567' from DER left and right of centerline up to 15' AGL/ 2146' MSL. Fence beginning 697' from DER, left and right of centerline, up to 10' AGL/ 2136' MSL.

NOTE: Chart not to scale.

## DEPARTURE ROUTE DESCRIPTION

TAKEOFF RUNWAY 30: Climb heading 303° to 2640, then left turn direct SETHY, Thence . . . .

. . . .Via transition. Maintain 6000, expect clearance to filed altitude/flight level 10 minutes after departure.

PULASKI TRANSITION (SETHY4.PSK):  
TABER TRANSITION (SETHY4.TABER):

**SETHY FOUR DEPARTURE (RNAV)**  
(SETHY4.SETHY) 10NOV16

BLACKSBURG, VIRGINIA  
VIRGINIA TECH/MONTGOMERY EXECUTIVE (BCB)

NE-3, 21 JUN 2018 to 19 JUL 2018

NE-3, 21 JUN 2018 to 19 JUL 2018