

(MYZNR2.MYZNR) 22139

AL-560 (FAA)

BOCA RATON (BCT)
BOCA RATON, FLORIDA

MYZNR TWO DEPARTURE (RNAV)

AWOS-3
121.125
CLNC DEL
121.8
GND CON
121.8
BOCA RATON TOWER *
118.425 (CTAF)
PALM BEACH DEP CON
127.35 343.6

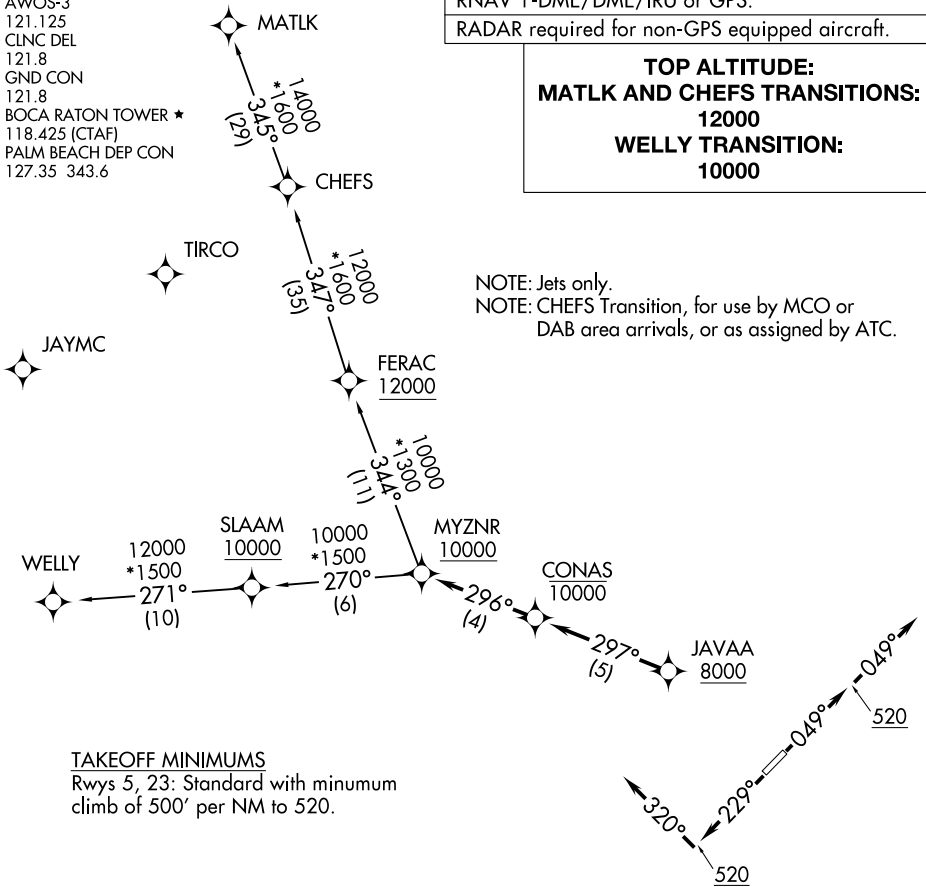
RNAV 1-DME/DME/IRU or GPS.

RADAR required for non-GPS equipped aircraft.

TOP ALTITUDE:
MATLK AND CHEFS TRANSITIONS:
12000
WELLY TRANSITION:
10000

NOTE: Jets only.

NOTE: CHEFS Transition, for use by MCO or DAB area arrivals, or as assigned by ATC.



TAKEOFF MINIMUMS

Rwys 5, 23: Standard with minimum climb of 500' per NM to 520.

NOTE: Chart not to scale.

DEPARTURE ROUTE DESCRIPTION

TAKEOFF RUNWAY 5: Climb on heading 049° to 520, then on heading 049° or as assigned by ATC, for vectors to cross JAVAA at or above 8000, thence. . .

TAKEOFF RUNWAY 23: Climb on heading 229° to 520, then on heading 320° or as assigned by ATC, for vectors to cross JAVAA at or above 8000, thence. . .

. . . on track 297° to cross CONAS at or below 10000, then on track 296° to cross MYZNR at or above 10000. Maintain ATC assigned altitude, expect clearance to filed altitude within 10 minutes after departure.

CHEFS TRANSITION (MYZNR2.CHEFS)

MATLK TRANSITION (MYZNR2.MATLK)

WELLY TRANSITION (MYZNR2.WELLY)

MYZNR TWO DEPARTURE (RNAV)

(MYZNR2.MYZNR) 19MAY22

BOCA RATON, FLORIDA
BOCA RATON (BCT)

SE-3, 19 MAY 2022 to 16 JUN 2022

(TURPS2.TURPS) 22139

AL-560 (FAA)

BOCA RATON (BCT)
BOCA RATON, FLORIDA

TURPS TWO DEPARTURE (RNAV)

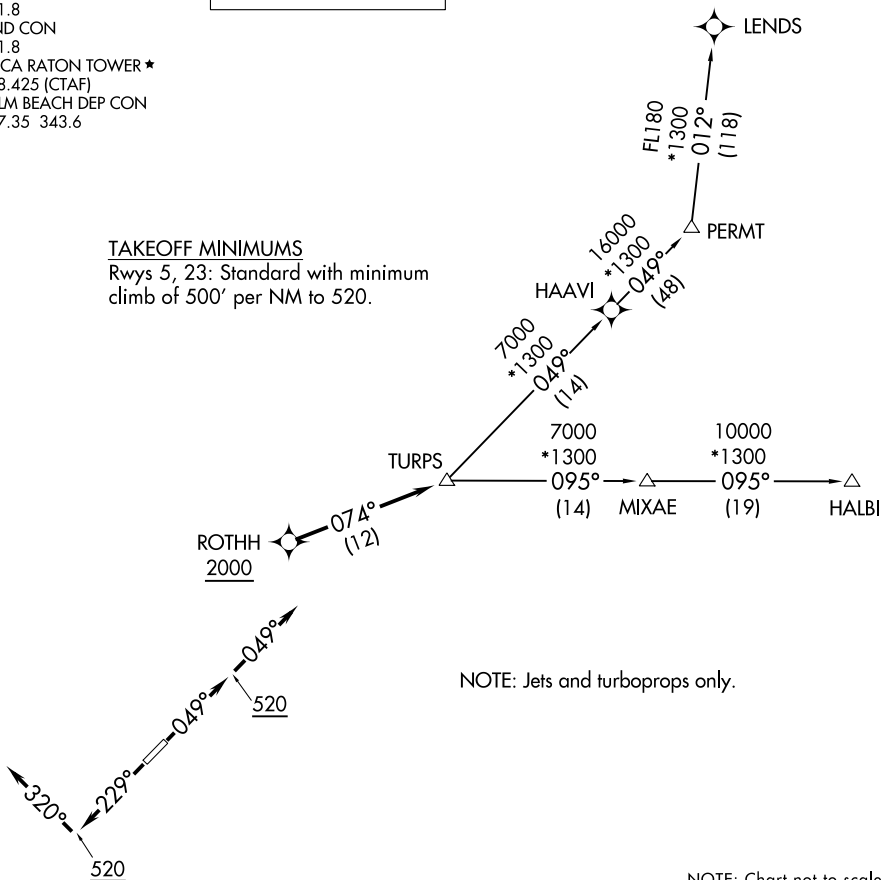
AWOS-3
121.125
CLINC DEL
121.8
GND CON
121.8
BOCA RATON TOWER ★
118.425 (CTAF)
PALM BEACH DEP CON
127.35 343.6

**TOP ALTITUDE:
2000**

RNAV-1 DME/DME/IRU or GPS.
RADAR required.

TAKEOFF MINIMUMS

Rwys 5, 23: Standard with minimum
climb of 500' per NM to 520.



NOTE: Jets and turboprops only.

NOTE: Chart not to scale.



DEPARTURE ROUTE DESCRIPTION

TAKEOFF RUNWAY 5: Climb on heading 049° to 520, then on heading 049°, or as assigned by ATC, for vectors to cross ROTHH at or above 2000, thence. . . .

TAKEOFF RUNWAY 23: Climb on heading 229° to 520, then on heading 320°, or as assigned by ATC, for vectors to cross ROTHH at or above 2000, thence. . . .

. . . .on track 074° to TURPS, maintain 2000, then on assigned transition, expect clearance to filed altitude within 10 minutes after departure.

HALBI TRANSITION (TURPS2.HALBI)

LENDIS TRANSITION (TURPS2.LENDIS)

PERMT TRANSITION (TURPS2.PERMT)

TURPS TWO DEPARTURE (RNAV)
(TURPS2.TURPS) 19MAY22

BOCA RATON, FLORIDA
BOCA RATON (BCT)

SE-3, 19 MAY 2022 to 16 JUN 2022

SE-3, 19 MAY 2022 to 16 JUN 2022