

# KIENO SIX DEPARTURE

AL-45 (FAA)

BELLINGHAM INTL (BLI)  
BELLINGHAM, WASHINGTON

**TOP ALTITUDE:  
ASSIGNED BY ATC**

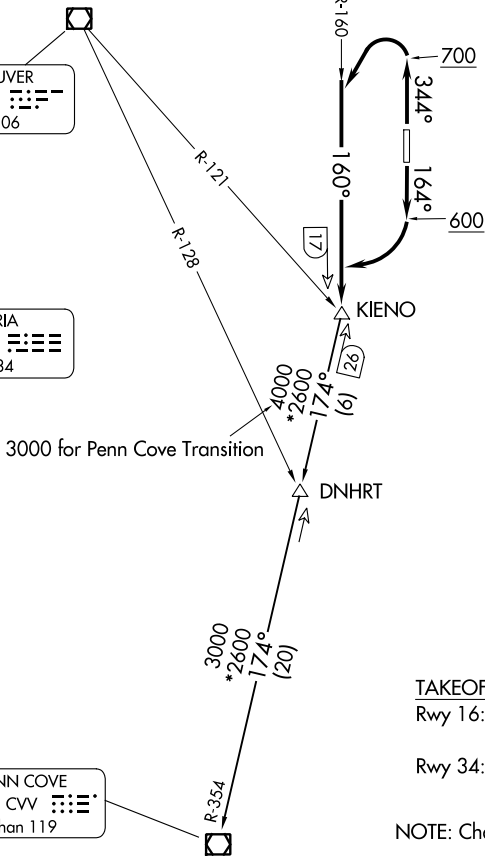
VANCOUVER  
115.9 YVR  
Chan 106

VICTORIA  
113.7 YYJ  
Chan 84

PENN COVE  
117.2 CVV  
Chan 119

WHATCOM  
113.0 HUH  
Chan 77

VICTORIA TERMINAL DEP CON  
132.7 290.8  
ATIS  
134.45  
GND CON  
127.4 379.3  
BELLINGHAM TOWER\*  
124.9 379.3



### TAKEOFF MINIMUMS

Rwy 16: Standard with a minimum climb of 280' per NM to 2500.  
Rwy 34: Standard.

NOTE: Chart not usable for TACAN aircraft.

NOTE: Chart not to scale.

### DEPARTURE ROUTE DESCRIPTION

TAKEOFF RUNWAY 16: Climb on heading 164° to 600, then climbing right turn to intercept HUH R-160 to KIENO, thence. . . .

TAKEOFF RUNWAY 34: Climb on heading 344° to 700, then climbing left turn to intercept HUH R-160 to KIENO, thence. . . .

. . . maintain ATC assigned altitude, expect requested altitude within 10 minutes.

DNHRT TRANSITION (KIENO6.DNHRT): From over KIENO on CVV R-354 to DNHRT.

PENN COVE TRANSITION (KIENO6.CVV): From over KIENO on CVV R-354 to CVV VOR/DME.

# KIENO SIX DEPARTURE

(KLSHN1.KLSHN) 23166

# KLSHN ONE DEPARTURE (RNAV)

AL-45 (FAA)

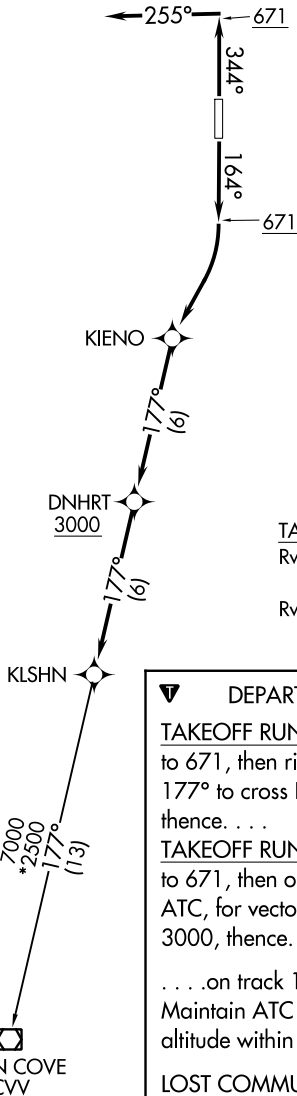
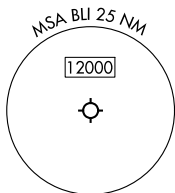
BELLINGHAM INTL (BLI)  
BELLINGHAM, WASHINGTON

**TOP ALTITUDE:  
ASSIGNED BY ATC**

RNAV 1 - DME/DME/IRU or GPS

RADAR required

VICTORIA TERMINAL DEP CON  
132.7 290.8  
ATIS  
134.45  
GND CON  
127.4 379.3  
BELLINGHAM TOWER ★  
124.9 379.3



### TAKEOFF MINIMUMS

Rwy 16: Standard with minimum climb of 245' per NM to 2300.  
Rwy 34: Standard.

NOTE: Chart not to scale.



### DEPARTURE ROUTE DESCRIPTION

**TAKEOFF RUNWAY 16:** Climb on heading 164° to 671, then right turn direct KIENO, then on track 177° to cross DNHRT at or above 3000, thence. . . .

**TAKEOFF RUNWAY 34:** Climb on heading 344° to 671, then on heading 255° or as assigned by ATC, for vectors to cross DNHRT at or above 3000, thence. . . .

. . . .on track 177° to KLSHN, then on (transition). Maintain ATC assigned altitude. Expect filed altitude within 5 minutes after departure.

**LOST COMMUNICATIONS:** If no transmissions are received for 2 minutes after departure, proceed direct DNHRT, then on last routing cleared.

**PENN COVE TRANSITION (KLSHN1.CVV)**



NW-1, 22 FEB 2024 to 21 MAR 2024

NW-1, 22 FEB 2024 to 21 MAR 2024

# KLSHN ONE DEPARTURE (RNAV)

(KLSHN1.KLSHN) 15JUN23

BELLINGHAM, WASHINGTON  
BELLINGHAM INTL (BLI)