

LOC/DME I-HPI 109.9 Chan 36	APP CRS 238°	Rwy ldg 9953 TDZE 786 Apt Elev 799
---	------------------------	---

ILS RWY 24L (SA CAT II)

CLEVELAND-HOPKINS INTL (CLE)

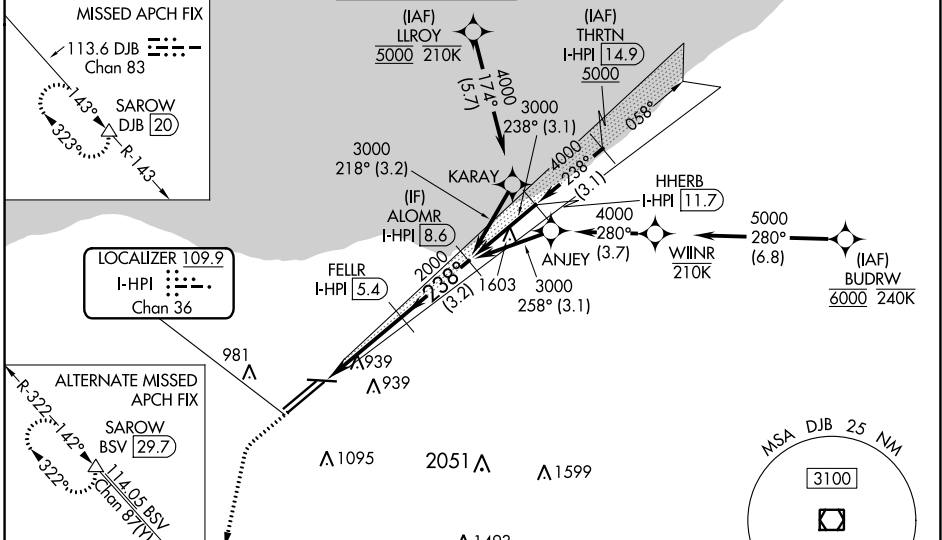
DME required. Aircraft not DME/DME/IRU or GPS equipped - RADAR required for procedure entry. RNAV 1. From LLROY and BU DRW: RNAV 1-DME/DME/IRU or GPS required for procedure entry.

MALSRL

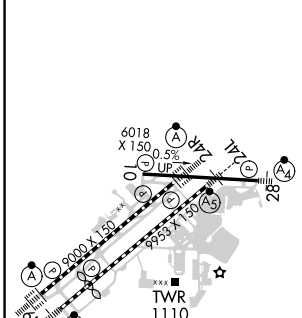
MISSED APPROACH: Climb to 1300 then climbing left turn to 3000 on heading 200° and DJB VOR/DME R-143 to SAROW/DJB 20 DME and hold.

Simultaneous approach authorized. Simultaneous operations require use of vertical guidance; maintain last assigned altitude until established on glideslope. Reduced lighting: requires specific OPSPEC, MSPEC, or LOA approval and use of autoland or HUD to touchdown.

D-ATIS ARR 127.85 DEP 132.375	CLEVELAND APP CON 126.55 364.325	CLEVELAND TOWER 124.5 273.45	GND CON 121.7 273.45	CLNC DEL 125.05 273.45	CPDLC
---	--	--	--------------------------------	----------------------------------	-------



ELEV 799	D	TDZE 24L 786
----------	----------	--------------



1300	3000	DJB R-143	SAROW	VGSI and ILS glidepath not coincident (VGSI Angle 3.00/TCH 48).
hdg 200°				
FELLR I-HPI 5.4		ALOMR I-HPI 8.6		
I-HPI 1.8		3000		GS 3.00° TCH 52
1021		3.7 NM		3.2 NM
CATEGORY	A	B	C	D
S-ILS 24L	RA 100/12 100 DA 886			

SA CATEGORY II ILS - SPECIAL AIRCREW & AIRCRAFT CERTIFICATION REQUIRED

REIL Rwy 10
TDZ/CL Rwy 6L, 6R, 24L, and 24R
HIRL Rwy 6L-24R, 6R-24L, and 10-28

EC-2, 22 FEB 2024 to 21 MAR 2024

EC-2, 22 FEB 2024 to 21 MAR 2024

CLEVELAND, OHIO

AL-84 (FAA)


22139

LOC/DME I-PVY 111.55	APP CRS 238°	Rwy Idg TDZE 780 Apt Elev 799
Chan 52(Y)		

ILS RWY 24R (CAT II & III)

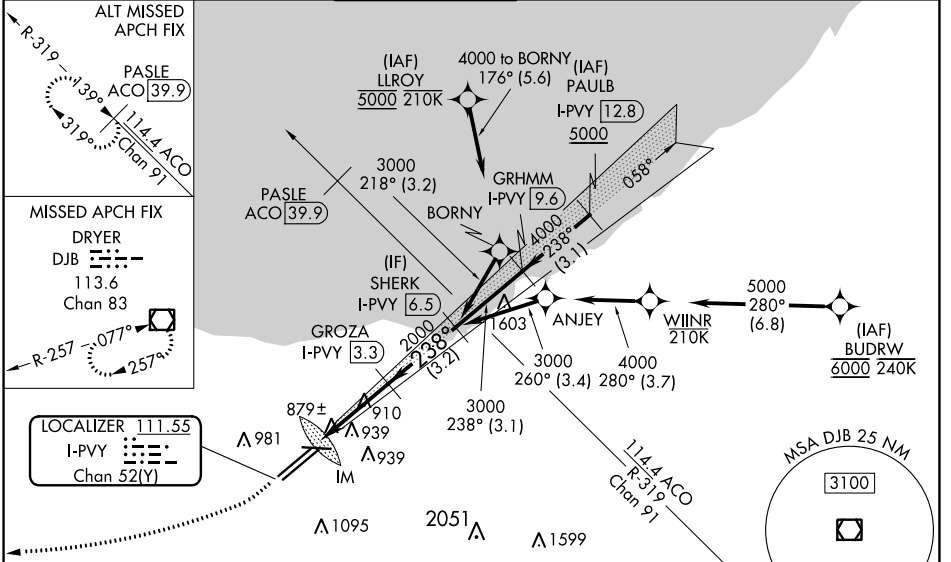
CLEVELAND-HOPKINS INTL (CLE)

DME required. Aircraft not DME/DME/IRU or GPS equipped - RADAR required for procedure entry. RNAV 1. From LLROY and BUDRW: RNAV 1-DME/DME/IRU or GPS required for procedure entry.

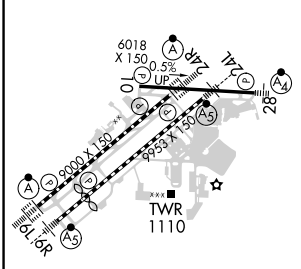
ALSIF-2

 MISSED APPROACH: Climb to 1700 then climbing right turn to 3000 direct DJB VOR/DME and hold.

▼ CAT II: RVR 1000 authorized with specific OPSPEC, MSPEC, or LOA approval and use of autoland or HUD to touchdown. Simultaneous approach authorized. Simultaneous operations require use of vertical guidance; maintain last assigned altitude until established on glideslope.

D-ATIS ARR 127.85 DEP 132.375	CLEVELAND APP CON 126.55 346.325	CLEVELAND TOWER 124.5 273.45	GND CON 121.7 273.45	CINC DEL 125.05 273.45	CPDLC
---	--	--	--------------------------------	----------------------------------	-------



ELEV 799	D	TDZE 780
-----------------	----------	-----------------



1700	3000	DJB	VGSI and ILS glidepath not coincident (VGSI Angle 3.00/TCH 65).
GROZA I-PVY 3.3		SHERK I-PVY 6.5	
IM 880		238°	
2000		3000	
1064		3.2 NM	
CATEGORY	A	B	C
S-ILS 24R	CAT II RA 100/12 100 DA 880		
S-ILS 24R	CAT III RVR 06		

REIL Rwy 10
 TDZ/CL Rwy 6L, 6R, 24L and 24R
 HIRL Rwy 6L-24R, 6R-24L and 10-28

CATEGORY II & III ILS - SPECIAL AIRCREW & AIRCRAFT CERTIFICATION REQUIRED

CLEVELAND, OHIO
 Amdt 7A 27JAN22

41°25'N-81°51'W

CLEVELAND-HOPKINS INTL (CLE)
ILS RWY 24R (CAT II & III)

EC-2, 22 FEB 2024 to 21 MAR 2024

EC-2, 22 FEB 2024 to 21 MAR 2024

LOC/DME I-PVY 111.55	APP CRS 238°	Rwy Idg TDZE 780	9000
Chan 52(Y)		Apt Elev 799	

ILS RWY 24R (SA CAT I)

CLEVELAND-HOPKINS INTL (CLE)

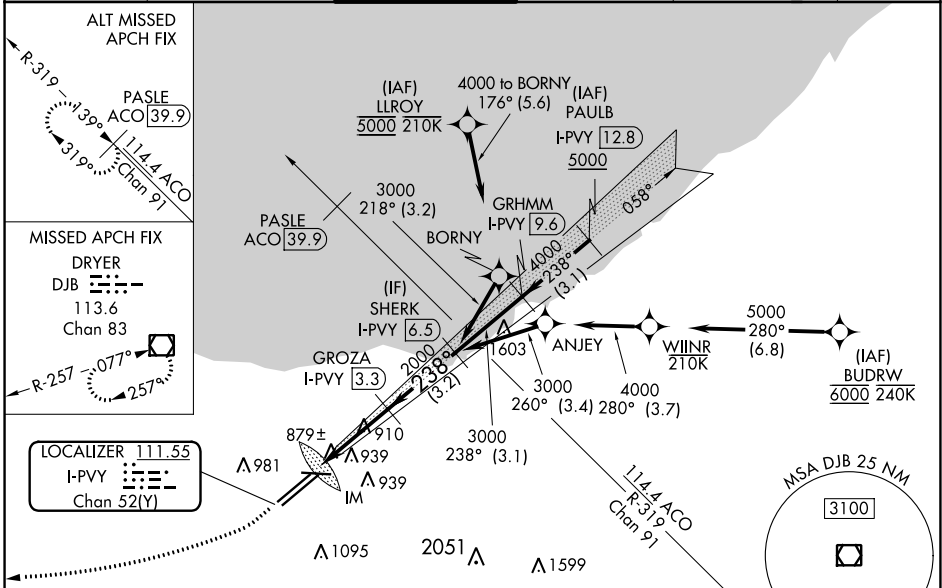
DME required. Aircraft not DME/DME/IRU or GPS equipped - RADAR required for procedure entry. RNAV 1. From LLROY and BUDRW: RNAV 1-DME/DME/IRU or GPS required for procedure entry.

Requires specific OPSPEC, MSPEC, or LOA approval and use of HUD to DH. Simultaneous approach authorized. Simultaneous operations require use of vertical guidance; maintain last assigned altitude until established on glideslope.

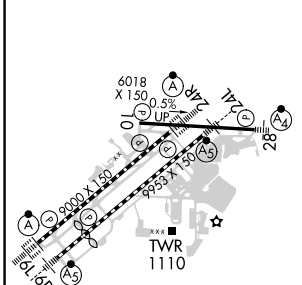
ALSF-2

MISSED APPROACH: Climb to 1700 then climbing right turn to 3000 direct DJB VOR/DME and hold.

D-ATIS ARR 127.85 DEP 132.375	CLEVELAND APP CON 126.55 346.325	CLEVELAND TOWER 124.5 273.45	GND CON 121.7 273.45	CLNC DEL 125.05 273.45	CPDLC
---	--	--	--------------------------------	----------------------------------	-------



ELEV 799	D	TDZE 780
----------	----------	----------



CATEGORY	A	B	C	D
S-ILS 24R	RA 150/14 150 DA 930			

REIL Rwy 10
TDZ/CL Rwy 6L, 6R, 24L and 24R
HIRL Rwy 6L-24R, 6R-24L and 10-28

SA CATEGORY I ILS - SPECIAL AIRCREW & AIRCRAFT CERTIFICATION REQUIRED

EC-2, 22 FEB 2024 to 21 MAR 2024

EC-2, 22 FEB 2024 to 21 MAR 2024

LOC/DME I-LIZ 111.55 Chan 52 (Y)	APP CRS 058°	Rwy Idg 9000 TDZE 773 Apt Elev 799
--	------------------------	---

ILS RWY 6L (CAT II & III)

CLEVELAND-HOPKINS INTL (CLE)

From GROHL, HICKR, and KWENE: RNAV 1-DME/DME/IRU or GPS required for procedure entry. Aircraft not DME/DME/IRU or GPS equipped - RADAR required for procedure entry. RNAV 1.

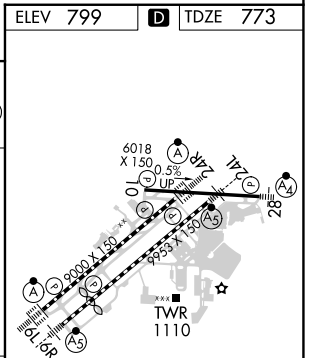
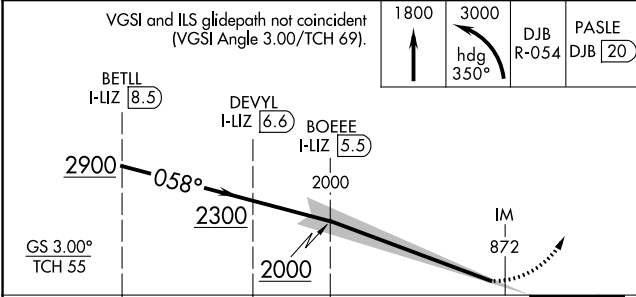
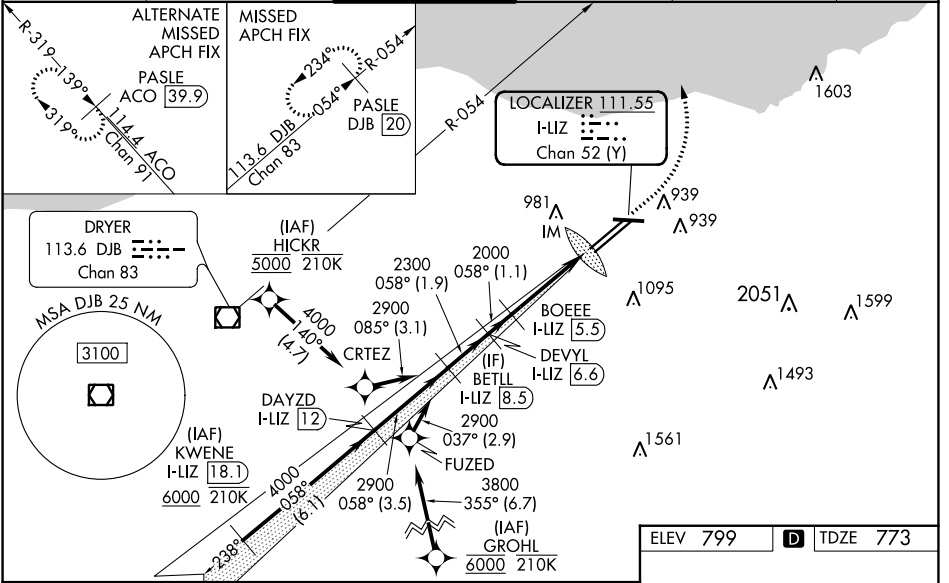
DME required.

Simultaneous approach authorized.
Simultaneous operations require use of vertical guidance; maintain last assigned altitude until established on glideslope.

ALSF-2

MISSED APPROACH: Climb to 1800 then climbing left turn to 3000 on heading 350° and DJB VOR/DME R-054 to PASLE/DJB 20 DME and hold.

D-ATIS ARR 127.85 DEP 132.375	CLEVELAND APP CON 126.55 346.325	CLEVELAND TOWER 124.5 273.45	GND CON 121.7 273.45	CLNC DEL 125.05 273.45	CPDLC
---	--	--	--------------------------------	----------------------------------	-------



CATEGORY	A	B	C	D
S-ILS 6L	CAT II RA 111/12		100 DA 873	
S-ILS 6L	CAT III RVR 06			

CATEGORY II & III ILS - SPECIAL AIRCREW & AIRCRAFT CERTIFICATION REQUIRED

REIL Rwy 10
TDZ/CL Rwy 6L, 6R, 24L, and 24R
HIRL Rwy 6L-24R, 6R-24L and 10-28

EC-2, 22 FEB 2024 to 21 MAR 2024

EC-2, 22 FEB 2024 to 21 MAR 2024

CLEVELAND, OHIO

AL-84 (FAA)

22139

LOC/DME I-CLE 111.9 Chan 56	APP CRS 058°	Rwy Idg 8029 TDZE 777 Apt Elev 799
--	------------------------	---

ILS RWY 6R (SA CAT II)

CLEVELAND-HOPKINS INTL (CLE)

From GROHL, HICKR, and RUHSH: RNAV 1-DME/DME/IRU or GPS required for procedure entry. Aircraft not DME/DME/IRU or GPS equipped - RADAR required for procedure entry. RNAV 1.



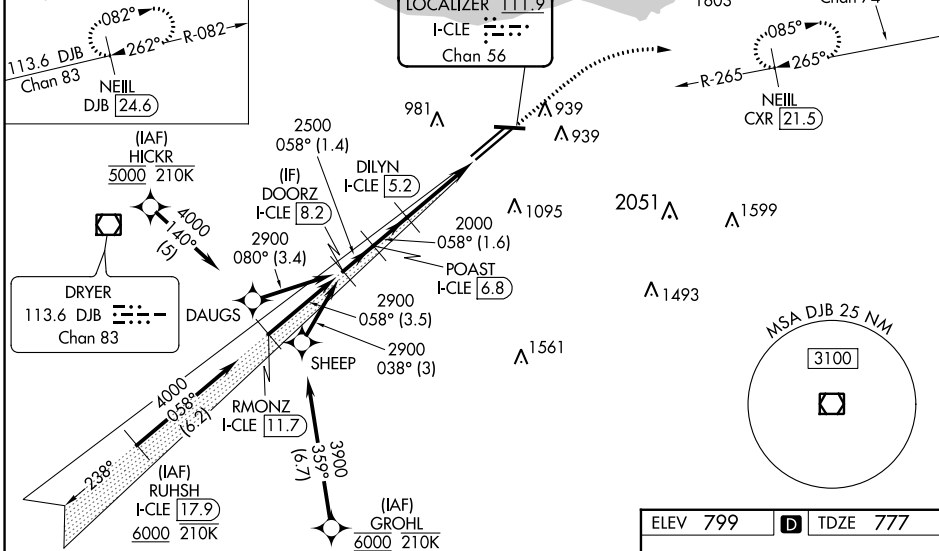
MISSED APPROACH: Climb to 1600 then climbing right turn to 3100 on CXR VOR/DME R-265 to NEILL/CXR 21.5 DME and hold.

DME required.

Simultaneous approach authorized. Simultaneous operations require use of vertical guidance; maintain last assigned altitude until established on glideslope. Reduced lighting: Requires specific OPSPEC, MSPEC, or LOA approval and use of autoland or HUD to touchdown.

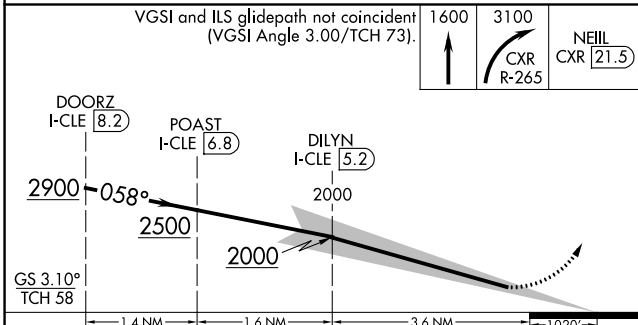
D-ATIS ARR 127.85 DEP 132.375	CLEVELAND APP CON 126.55 346.325	CLEVELAND TOWER 124.5 273.45	GND CON 121.7 273.45	CLNC DEL 125.05 273.45	CPDLC
---	--	--	--------------------------------	----------------------------------	-------

ALTERNATE MISSED APCH FIX

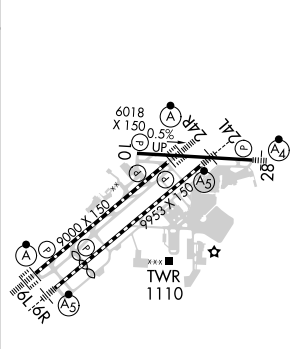


EC-2, 22 FEB 2024 to 21 MAR 2024

EC-2, 22 FEB 2024 to 21 MAR 2024



ELEV 799	D TDZE 777
----------	-------------------



CATEGORY	A	B	C	D
S-ILS 6R	RA 100/12 100 DA 877			

SA CATEGORY II ILS - SPECIAL AIRCREW & AIRCRAFT CERTIFICATION REQUIRED

REIL Rwy 10
TDZ/CL Rwy 6L, 6R, 24L and 24R
HIRL Rwy 6L-24R, 6R-24L and 10-28

CLEVELAND, OHIO
Amdt 22 24MAY18

41°25'N-81°51'W

CLEVELAND-HOPKINS INTL (CLE)

ILS RWY 6R (SA CAT II)

LOC/DME I-HPI 109.9 Chan 36	APP CRS 238°	Rwy Idg 24L 9953 24R 9000	TDZE 786 780	Apt Elev 799 799
---	------------------------	---	----------------------------------	--------------------------------------

ILS or LOC RWY 24L

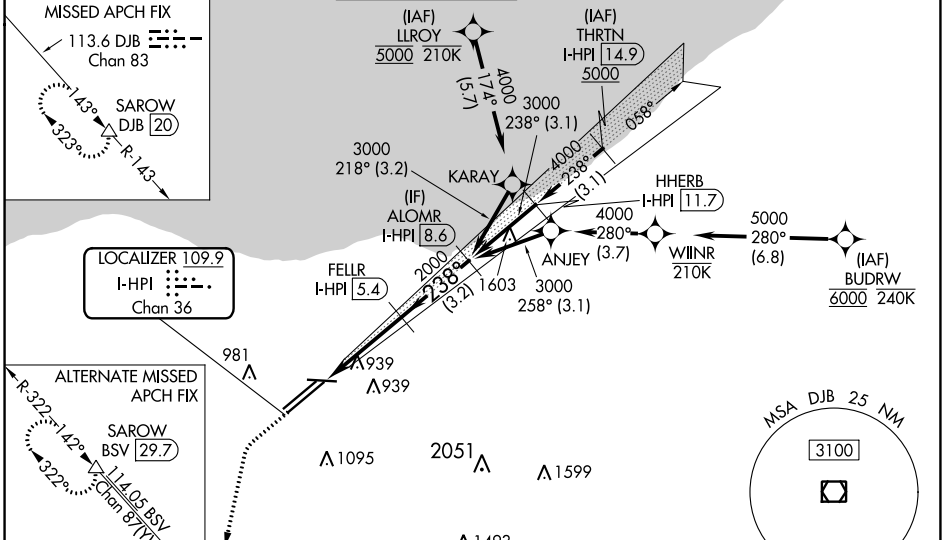
CLEVELAND-HOPKINS INTL (CLE)

DME required. Aircraft not DME/DME/IRU or GPS equipped - RADAR required for procedure entry. RNAV 1. From LLROY and BUDRW: RNAV 1-DME/DME/IRU or GPS required for procedure entry.

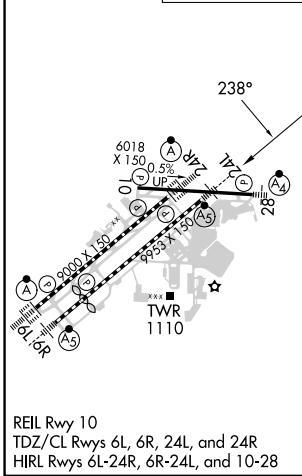
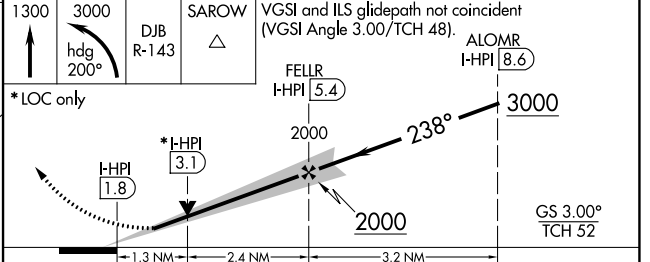
⚠ Circling Rwy 10 NA at night. Simultaneous approach authorized. Simultaneous operations require use of vertical guidance; maintain last assigned altitude until established on glideslope. Inop table does not apply to Sidestep 24R. For inop ALS, increase S-LOC 24L Cats C/D visibility to 1 3/8 SM.

Rwy 24L MALSR 	Rwy 24R ALSF-2 	MISSED APPROACH: Climb to 1300 then climbing left turn to 3000 on heading 200° and DJB VOR/DME R-143 to SAROW/DJB 20 DME and hold.
----------------------	-----------------------	---

D-ATIS ARR 127.85 DEP 132.375	CLEVELAND APP CON 126.55 346.325	CLEVELAND TOWER 124.5 273.45	GND CON 121.7 273.45	CLNC DEL 125.05 273.45	CPDLC
---	--	--	--------------------------------	----------------------------------	-------



ELEV 799	TDZE 24L 786
	TDZE 24R 780



CATEGORY	A	B	C	D
S-ILS 24L	986/18 200 (200-1/2)			
S-LOC 24L	1260/24	474 (500-1/2)	1260/50	474 (500-1)
SIDESTEP 24R	1260/55	480 (500-1)	1260-1 1/2 480 (500-1 1/2)	1260-2 480 (500-2)
CIRCLING	1420-1	621 (700-1)	1420-1 3/4 621 (700-1 3/4)	1420-2 621 (700-2)

EC-2, 22 FEB 2024 to 21 MAR 2024

EC-2, 22 FEB 2024 to 21 MAR 2024

LOC/DME I-PVY 111.55 Chan 52 (Y)	APP CRS 238°	Rwy Idg 24R 24L 9000 9956 TDZE 780 786 Apt Elev 799 799
---	------------------------	---

ILS or LOC RWY 24R

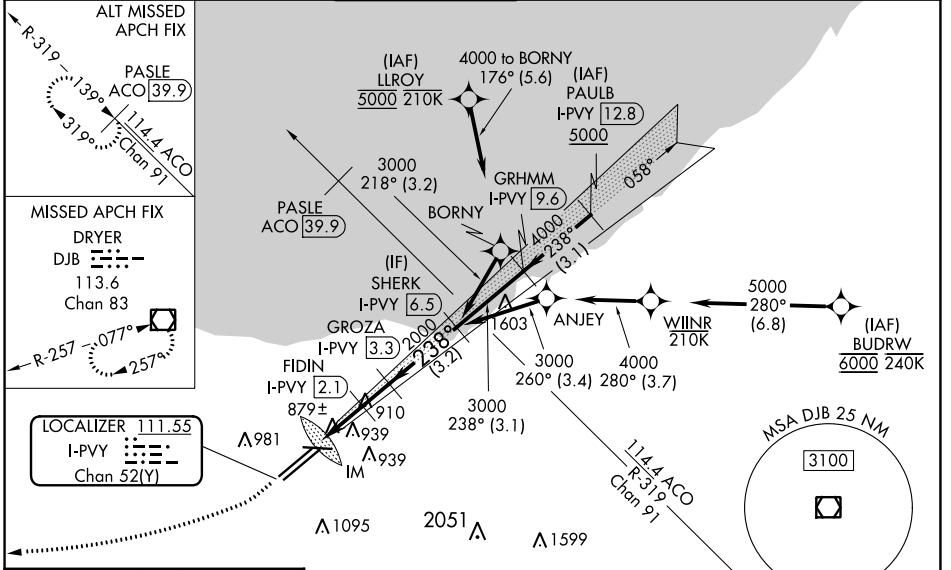
CLEVELAND-HOPKINS INTL (CLE)

DME required. Aircraft not DME/DME/IRU or GPS equipped - RADAR required for procedure entry. RNAV 1. From LLROY and BUDRW: RNAV 1-DME/DME/IRU or GPS required for procedure entry.

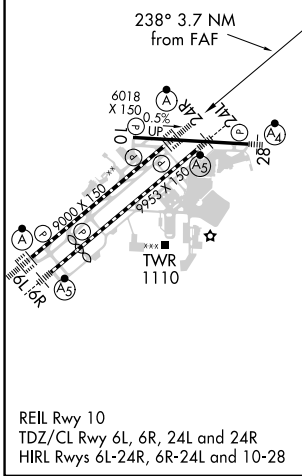
⚠ Circling Rwy 10 NA at night. Simultaneous approach authorized. Simultaneous operations require use of vertical guidance; maintain last assigned altitude until established on glide slope. Inop table does not apply to sidestep 24L. For inop ALS, increase S-LOC 24R Cats C/D visibility to RVR 5500.

Rwy 24L MALSR 	Rwy 24R ALSF-2 	MISSED APPROACH: Climb to 1700 then climbing right turn to 3000 direct DJB VOR/DME and hold.
----------------------	-----------------------	--

D-ATIS ARR 127.85 DEP 132.375	CLEVELAND APP CON 126.55 346.325	CLEVELAND TOWER 124.5 273.45	GND CON 121.7 273.45	CLNC DEL 125.05 273.45	CPDLC
---	--	--	--------------------------------	----------------------------------	-------



ELEV 799	D TDZE 24R 780 TDZE 24L 786
----------	---------------------------------------



1700	3000	DJB	VGSi and ILS glidepath not coincident (VGSi Angle 3.00/TCH 65).		
* LOC only.					
I-PVY 0.3	*I-PVY 0.6	FIDIN I-PVY 2.1	GROZA I-PVY 3.3	SHERK I-PVY 6.5	
IM			2000	3000	GS 3.00° TCH 55
0.1 0.9 1.5 NM			1.2 NM	3.2 NM	
CATEGORY	A	B	C	D	
S-ILS 24R	980/18		200 (200-½)		
S-LOC 24R	1160/24	379 (400-½)	1160/35	379 (400-¾)	
SIDESTEP 24L	1280/55	494 (500-1)	1280-1½ 494 (500-1½)	1280-2 494 (500-2)	
C CIRCLING	1420-1	621 (700-1)	1420-1¾ 621 (700-1¾)	1420-2 621 (700-2)	

EC-2, 22 FEB 2024 to 21 MAR 2024

EC-2, 22 FEB 2024 to 21 MAR 2024

LOC/DME I-PXP 110.7 Chan 44	APP CRS 281°	Rwy Idg TDZE 799 Apt Elev 799	6018
---	------------------------	---	-------------

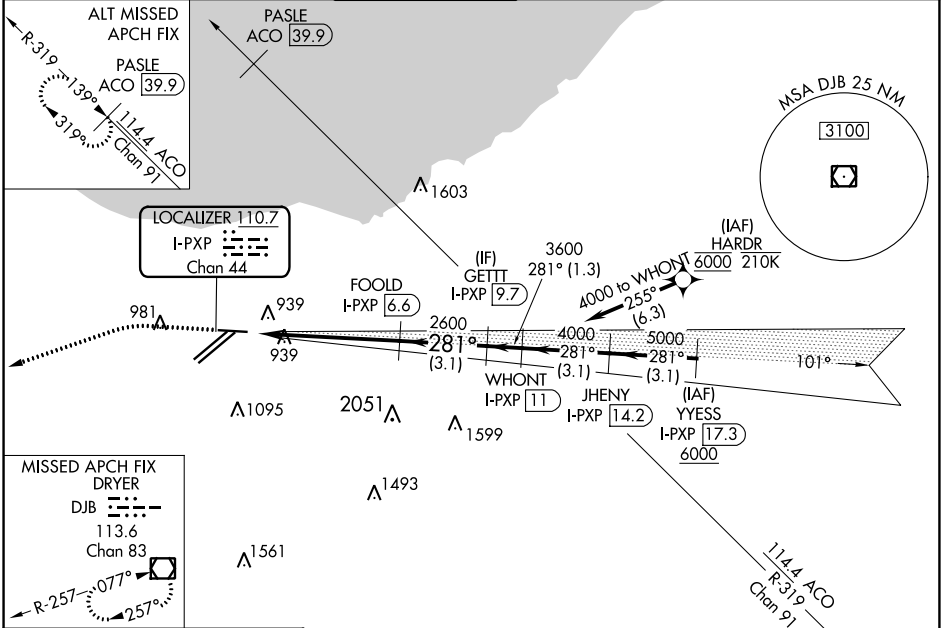
ILS or LOC RWY 28

CLEVELAND-HOPKINS INTL (CLE)

RNAV 1. From HARDR: RNAV 1-DME/DME/IRU or GPS required for procedure entry.
Aircraft not DME/DME/IRU or GPS equipped - RADAR required for procedure entry.
DME required.

MALSF MISSED APPROACH: Climb to 1400 then climbing left turn to 3000 direct DJB VOR/DME and hold.

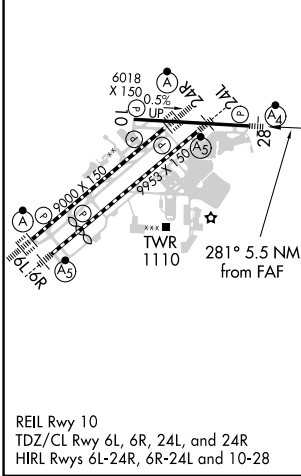
D-ATIS ARR 127.85 DEP 132.375		CLEVELAND APP CON 126.55 346.325	CLEVELAND TOWER 124.5 273.45	GND CON 121.7 273.45	CLNC DEL 125.05 273.45	CPDLC
---	--	--	--	--------------------------------	----------------------------------	-------



EC-2, 22 FEB 2024 to 21 MAR 2024

EC-2, 22 FEB 2024 to 21 MAR 2024

ELEV 799	D	TDZE 799
----------	----------	----------




1400	3000	DJB	
*LOC only.			
I-PXP 1.1	*I-PXP 2.6	FOOLD I-PXP 6.6	GETTT I-PXP 9.7
2600		281°	3600
-1.6 NM		4 NM	3.1 NM
CATEGORY	A	B	C
S-ILS 28	999/40		200 (200-3/4)
S-LOC 28	1340/40	541 (600-3/4)	1340-1 3/8 541 (600-1 3/8)
C CIRCLING	1420-1	621 (700-1)	1420-1 3/4 621 (700-1 3/4) 1420-2 621 (700-2)

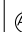
LOC/DME I-LIZ	APP CRS	Rwy Idg	6L	6R
111.55	058°	TDZE	9000	8029
Chan 52 (Y)		Apt Elev	773	777
			799	799

ILS or LOC RWY 6L

CLEVELAND-HOPKINS INTL (CLE)

From GROHL, HICKR, and KWENE: RNAV 1-DME/DME/IRU or GPS required for procedure entry. Aircraft not DME/DME/IRU or GPS equipped - RADAR required for procedure entry. RNAV 1.

Rwy 6L ALSF-2 

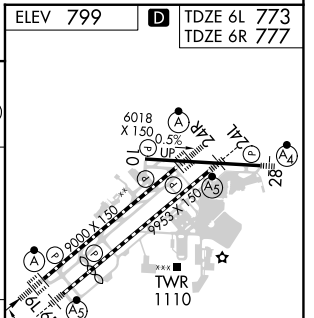
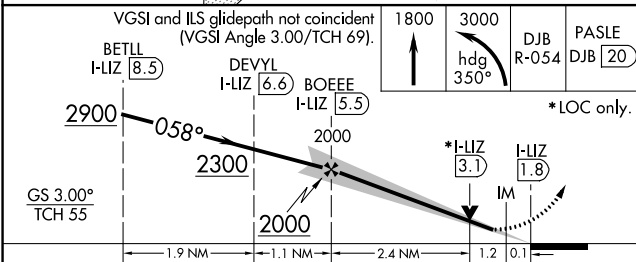
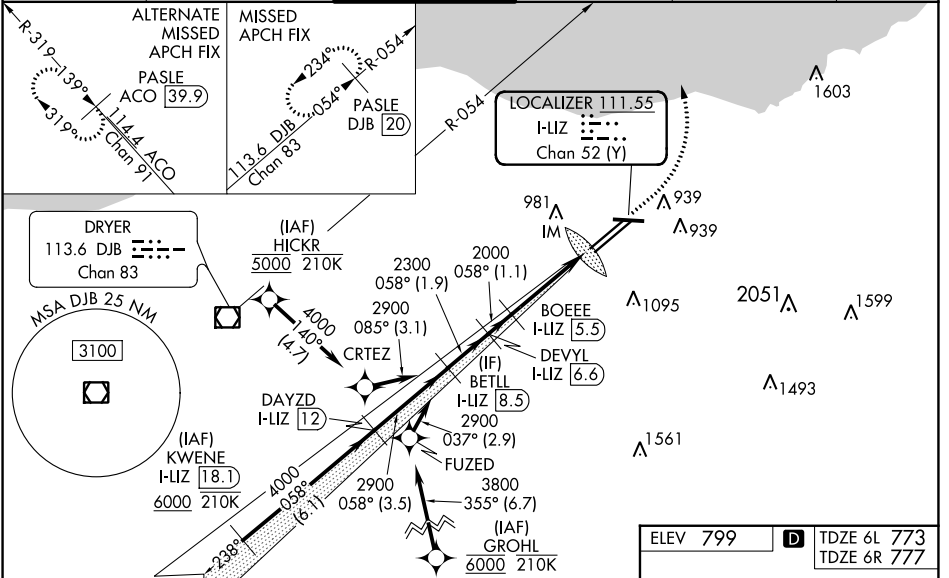
Rwy 6R MALSR 

MISSED APPROACH: Climb to 1800 then climbing left turn to 3000 on heading 350° and DJB VOR/DME R-054 to PASLE/DJB 20 DME and hold.

DME required.

⚠ Circling Rwy 10 NA at night. Simultaneous approach authorized. Simultaneous operations require use of vertical guidance; maintain last assigned altitude until established on glideslope. Inop table does not apply to Sidestep 6R. For inop ALS, increase S-LOC 6L Cats C/D visibility to 1 $\frac{3}{8}$ SM.

D-ATIS ARR 127.85 DEP 132.375	CLEVELAND APP CON 126.55 346.325	CLEVELAND TOWER 124.5 273.45	GND CON 121.7 273.45	CLNC DEL 125.05 273.45	CPDLC
---	--	--	--------------------------------	----------------------------------	-------



CATEGORY	A	B	C	D
S-ILS 6L	973/18		200 (200- $\frac{1}{2}$)	
S-LOC 6L	1260/24	487 (500- $\frac{1}{2}$)	1260/50	487 (500-1)
SIDESTEP 6R	1260/55	483 (500-1)	1260-1 $\frac{1}{2}$ 483 (500-1 $\frac{1}{2}$)	1260-2 483 (500-2)
C CIRCLING	1420-1	621 (700-1)	1420-1 $\frac{3}{4}$ 621 (700-1 $\frac{3}{4}$)	1420-2 621 (700-2)

058° 3.7 NM from FAF

REIL Rwy 10
TDZ/CL Rwy 6L, 6R, 24L, and 24R
HIRL Rwy 6L-24R, 6R-24L and 10-28

EC-2, 22 FEB 2024 to 21 MAR 2024

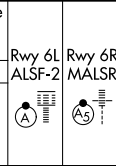
EC-2, 22 FEB 2024 to 21 MAR 2024

LOC/DME I-CLE 111.9 Chan 56	APP CRS 058°	Rwy Idg TDZE Apt Elev	6R 8029 777 799	6L 9000 773 799
--	------------------------	-----------------------------	---	---

ILS or LOC RWY 6R

CLEVELAND-HOPKINS INTL (CLE)

From GROHL, HICKR, and RUHSH: RNAV 1-DME/DME/IRU or GPS required for procedure entry. Aircraft not DME/DME/IRU or GPS equipped - RADAR required for procedure entry. RNAV 1.

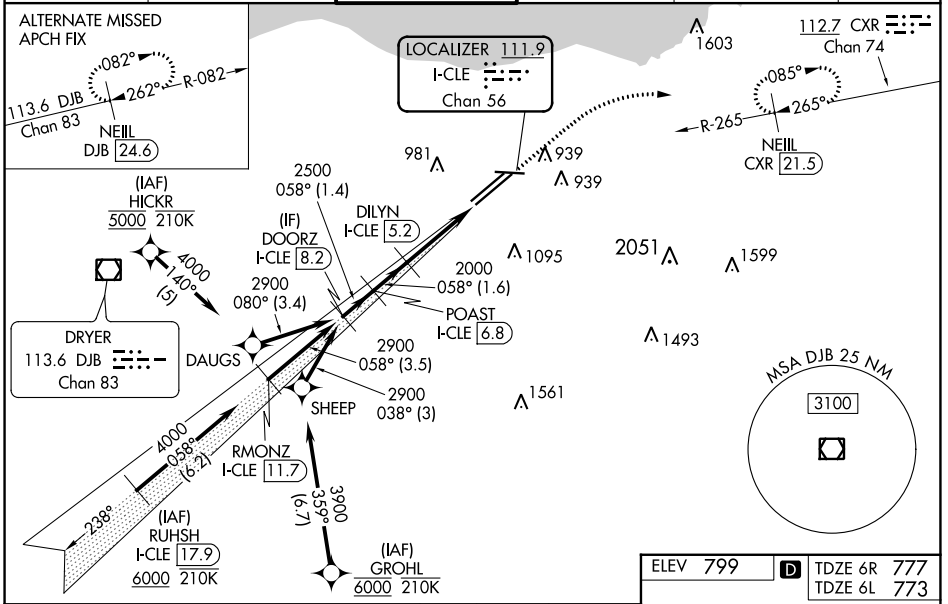


MISSED APPROACH:
Climb to 1600 then climbing right turn to 3100 on CXR VOR/DME R-265 to NEILL/CXR 21.5 DME and hold.

DME required.

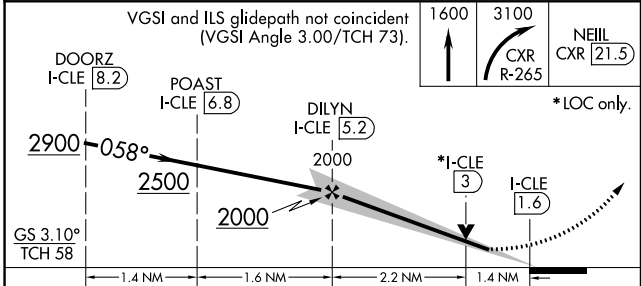
▼ Circling Rwy 10 NA at night. Simultaneous approach authorized. Simultaneous operations require use of vertical guidance; maintain last assigned altitude until established on glideslope. Inop table does not apply to Sidestep 6L. For inop ALS, increase S-LOC 6R Cats C/D visibility to 1 1/8 SM.

D-ATIS ARR 127.85 DEP 132.375	CLEVELAND APP CON 126.55 346.325	CLEVELAND TOWER 124.5 273.45	GND CON 121.7 273.45	CLNC DEL 125.05 273.45	CPDLC
---	--	--	--------------------------------	----------------------------------	-------



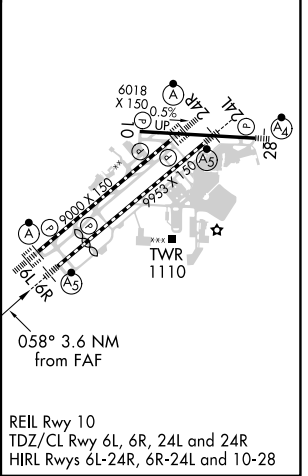
EC-2, 22 FEB 2024 to 21 MAR 2024

EC-2, 22 FEB 2024 to 21 MAR 2024



ELEV 799	D TDZE 6R 777
	TDZE 6L 773

CATEGORY	A	B	C	D
S-ILS 6R	977/18		200 (200-1/2)	
S-LOC 6R	1260/24	483 (500-1/2)	1260/50	483 (500-1)
SIDESTEP 6L	1260/55	487 (500-1)	1260-1 1/2 487 (500-1 1/2)	1260-2 487 (500-2)
C CIRCLING	1420-1	621 (700-1)	1420-1 3/4 621 (700-1 3/4)	1420-2 621 (700-2)



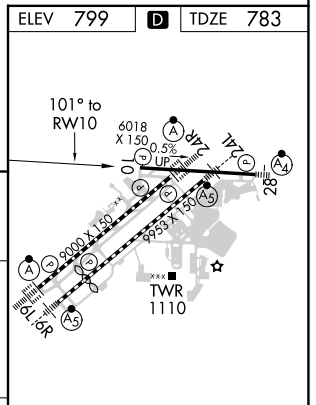
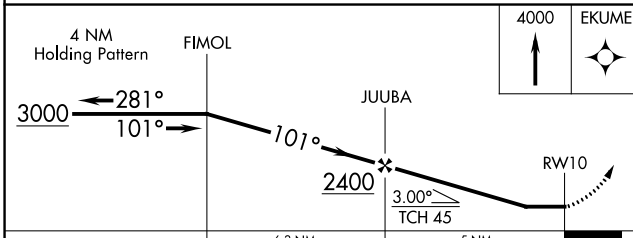
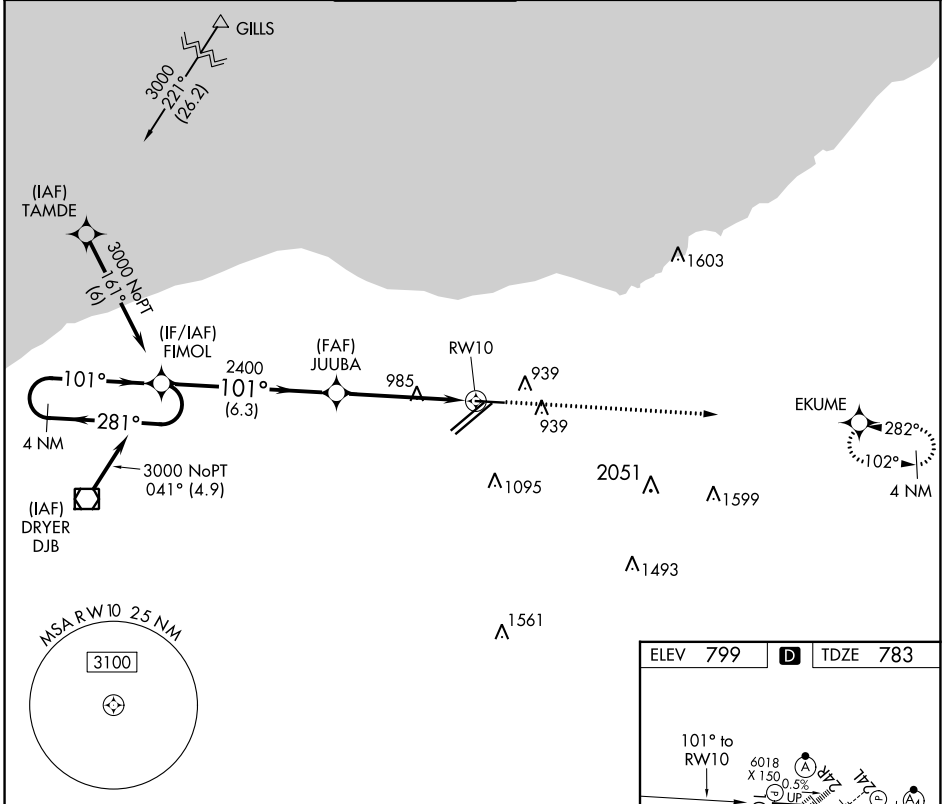
WAAS CH 73026 W10A	APP CRS 101°	Rwy Idg TDZE Apt Elev	6018 783 799
--	------------------------	-----------------------------	---

RNAV (GPS) RWY 10

CLEVELAND-HOPKINS INTL (CLE)

RNP APCH. ▼ Rwy 10 helicopter visibility reduction below 1 SM NA. Procedure NA at night.		MISSED APPROACH: Climb to 4000 direct EKUME and hold.			
--	--	---	--	--	--

D-ATIS ARR 127.85 DEP 132.375	CLEVELAND APP CON 126.55 346.325	CLEVELAND TOWER 124.5 273.45	GND CON 121.7 273.45	CLNC DEL 125.05 273.45	CPDLC
---	--	--	--------------------------------	----------------------------------	-------



CATEGORY	A	B	C	D
LP MDA	1240-1	457 (500-1)	1240-1 $\frac{3}{8}$	457 (500-1 $\frac{3}{8}$)
LNAV MDA	1240-1	457 (500-1)	1240-1 $\frac{3}{8}$	457 (500-1 $\frac{3}{8}$)

REIL Rwy 10
TDZ/CL Rwy 6L, 6R, 24L, and 24R
HIRL Rwy 10-28, 6R-24L, and 6L-24R

CLEVELAND, OHIO

AL-84 (FAA)

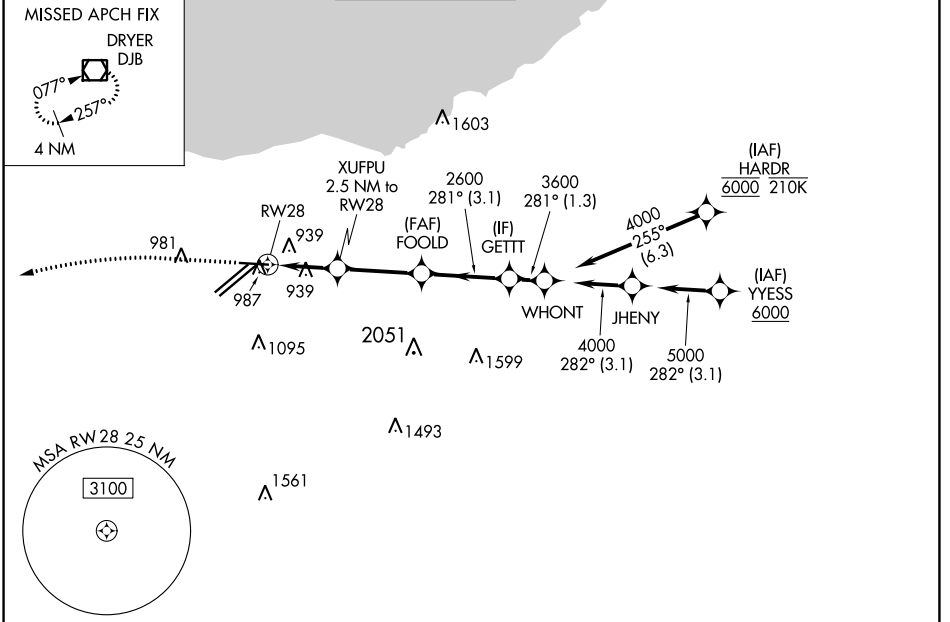
22139

WAAS CH 40109 W28A	APP CRS 281°	Rwy Idg 6018 TDZE 799 Apt Elev 799
--	------------------------	---

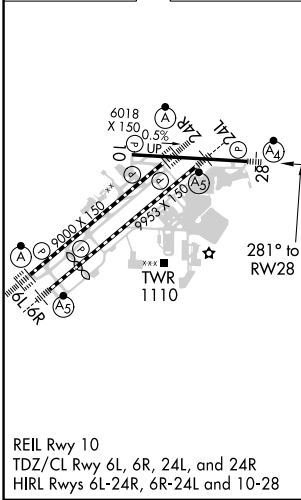
RNAV (GPS) RWY 28

CLEVELAND-HOPKINS INTL (CLE)

RNP APCH. For uncompensated Baro-VNAV systems, LNAV/VNAV NA below -18°C (0°F) or above 54°C (130°F). Circling Rwy 10 NA at night. Inop table does not apply to LPV.		MALSF 	MISSED APPROACH: Climb to 1400 then climbing left turn to 3000 direct DJB VOR/DME and hold.		
D-ATIS ARR 127.85 DEP 132.375	CLEVELAND APP CON 126.55 346.325	CLEVELAND TOWER 124.5 273.45	GND CON 121.7 273.45	CLNC DEL 125.05 273.45	CPDLC



ELEV 799	D	TDZE 799
----------	----------	----------



1400 3000 DJB 	*LNAV only. XUFPU 2.5 NM to RWY 28 FOOLD 2600 GETT 3600 GP 3.00° TCH 46																												
RWY 28 *1.3 NM to RWY 28 *1640	1.3 NM	1.2 NM	3 NM	3.1 NM																									
<table border="1"> <thead> <tr> <th>CATEGORY</th> <th>A</th> <th>B</th> <th>C</th> <th>D</th> </tr> </thead> <tbody> <tr> <td>LPV DA</td> <td></td> <td>999/40</td> <td>200 (200-¾)</td> <td></td> </tr> <tr> <td>LNAV/VNAV DA</td> <td></td> <td>1168/40</td> <td>369 (400-¾)</td> <td></td> </tr> <tr> <td>LNAV MDA</td> <td>1260/40</td> <td>461 (500-¾)</td> <td>1260/60</td> <td>461 (500-1¼)</td> </tr> <tr> <td>C CIRCLING</td> <td>1420-1</td> <td>621 (700-1)</td> <td>1420-1¾ 621 (700-1¾)</td> <td>1420-2 621 (700-2)</td> </tr> </tbody> </table>	CATEGORY	A	B	C	D	LPV DA		999/40	200 (200-¾)		LNAV/VNAV DA		1168/40	369 (400-¾)		LNAV MDA	1260/40	461 (500-¾)	1260/60	461 (500-1¼)	C CIRCLING	1420-1	621 (700-1)	1420-1¾ 621 (700-1¾)	1420-2 621 (700-2)				
CATEGORY	A	B	C	D																									
LPV DA		999/40	200 (200-¾)																										
LNAV/VNAV DA		1168/40	369 (400-¾)																										
LNAV MDA	1260/40	461 (500-¾)	1260/60	461 (500-1¼)																									
C CIRCLING	1420-1	621 (700-1)	1420-1¾ 621 (700-1¾)	1420-2 621 (700-2)																									

CLEVELAND, OHIO
Amdt 3 24MAY18

41°25'N-81°51'W

CLEVELAND-HOPKINS INTL (CLE) RNAV (GPS) RWY 28

EC-2, 22 FEB 2024 to 21 MAR 2024

EC-2, 22 FEB 2024 to 21 MAR 2024

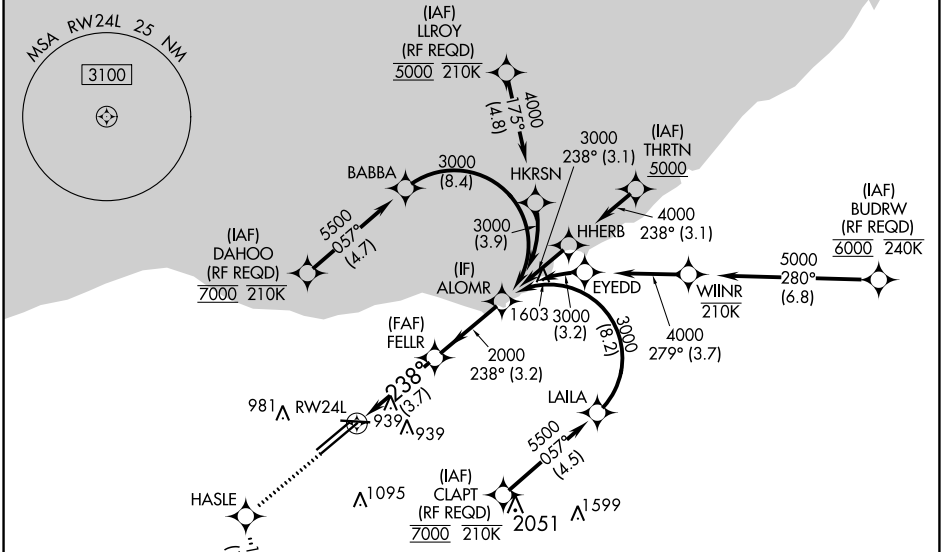
RNAV (RNP) Z RWY 24L

CLEVELAND-HOPKINS INTL (CLE)

APP CRS 238°	Rwy Idg TDZE Apt Elev	9953 786 799
------------------------	-----------------------------	---

RNP AR APCH.	MALS R	MISSED APPROACH: Climb to 3000 direct HASLE and on track 177° to SAROW and hold.
▼ For uncompensated Baro-VNAV systems, procedure NA below -18°C (0°F) or above 54°C (130°F). For inop ALS, increase RNP 0.19 all Cats visibility to RVR 5500.		

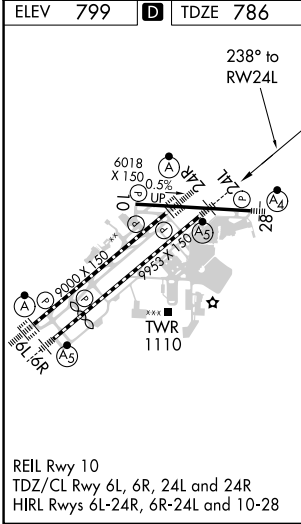
D-ATIS ARR 127.85 DEP 132.375	CLEVELAND APP CON 126.55 346.325	CLEVELAND TOWER 124.5 273.45	GND CON 121.7 273.45	CLNC DEL 125.05 273.45	CPDLC
---	--	--	--------------------------------	----------------------------------	-------



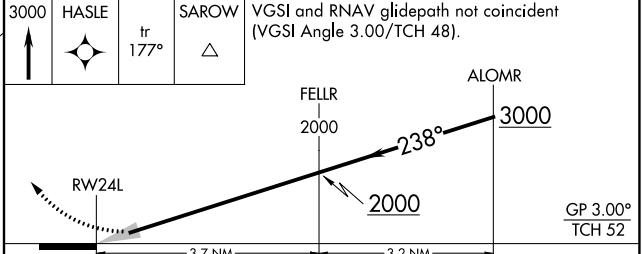
EC-2, 22 FEB 2024 to 21 MAR 2024

EC-2, 22 FEB 2024 to 21 MAR 2024

ELEV 799	D	TDZE 786
----------	----------	----------



1561	HASLE	SAROW	VGSI and RNAV glidepath not coincident (VGSI Angle 3.00/TCH 48).
3000		tr 177°	



CATEGORY	A	B	C	D
RNP 0.19 DA		1140/30	354 (400-5%)	
RNP 0.30 DA		1243/45	457 (500-7%)	

AUTHORIZATION REQUIRED

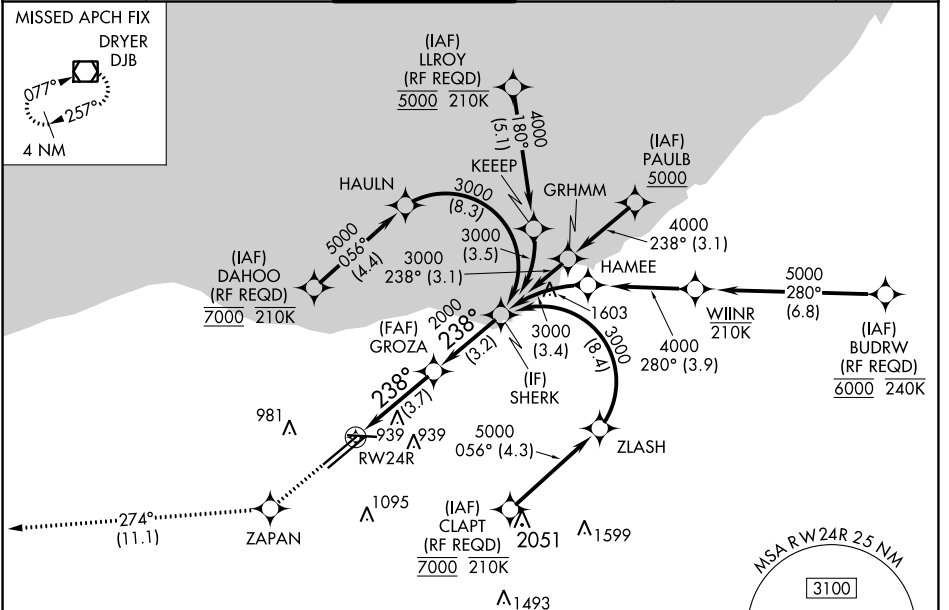
RNAV (RNP) Z RWY 24R

CLEVELAND-HOPKINS INTL (CLE)

APP CRS	Rwy Idg	9000
238°	TDZE	780
	Apt Elev	799

RNP AR APCH.	ALSF-2 	MISSED APPROACH: Climb to 3000 direct ZAPAN and on track 274° to DJB VOR/DME and hold.
For uncompensated Baro-VNAV systems, procedure NA below -18°C (0°F) or above 54°C (130°F). For inop ALS, increase RNP 0.13 all Cats visibility to RVR 4500.		

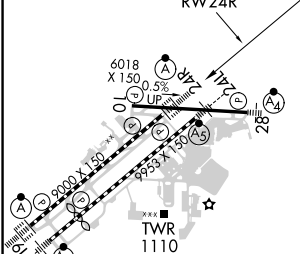
D-ATIS ARR 127.85 DEP 132.375	CLEVELAND APP CON 126.55 346.325	CLEVELAND TOWER 124.5 273.45	GND CON 121.7 273.45	CLNC DEL 125.05 273.45	CPDLC
---	--	--	--------------------------------	----------------------------------	-------



EC-2, 22 FEB 2024 to 21 MAR 2024

EC-2, 22 FEB 2024 to 21 MAR 2024

ELEV 799	D	TDZE 780
----------	----------	----------



3000	ZAPAN	tr 274°	DJB	VGSI and RNAV glidepath not coincident (VGSI Angle 3.00/TCH 65).
				SHERK
	GROZA	2000	3000	
	RW24R	2000		GP 3.00° TCH 55
		3.7 NM	3.2 NM	

CATEGORY	A	B	C	D
RNP 0.13 DA		1064/24	284 (300-½)	
RNP 0.30 DA		1176/35	396 (400-¾)	

AUTHORIZATION REQUIRED

RNAV (RNP) Z RWY 6L

CLEVELAND-HOPKINS INTL (CLE)

APP CRS 058°	Rwy Idg 9000
	TDZE 773
	Apt Elev 799

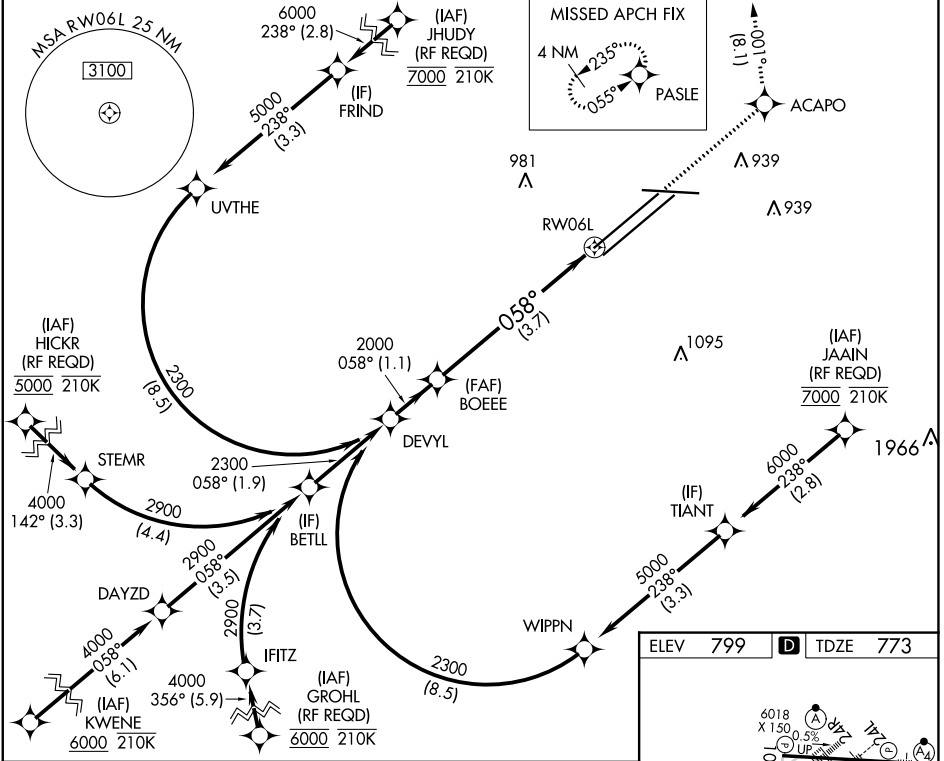
RNP AR APCH.

▼ For uncompensated Baro-VNAV systems, procedure NA below -18°C (0°F) or above 54°C (130°F). For inop ALS, increase RNP 0.17 all Cats visibility to RVR 5500 and RNP 0.30 all Cats visibility to RVR 6000.

ALSIF-2

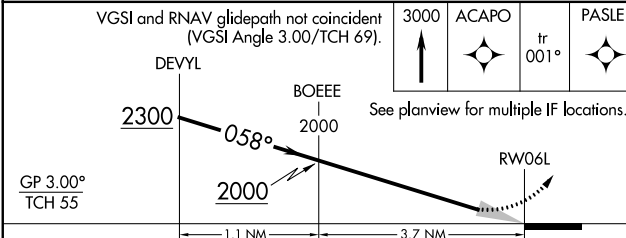
MISSED APPROACH: Climb to 3000 direct ACAPO and on track 001° to PASLE and hold.

D-ATIS ARR 127.85 DEP 132.375	CLEVELAND APP CON 126.55 346.325	CLEVELAND TOWER 124.5 273.45	GND CON 121.7 273.45	CLNC DEL 125.05 273.45	CPDLC
---	--	--	--------------------------------	----------------------------------	-------



EC-2, 22 FEB 2024 to 21 MAR 2024

EC-2, 22 FEB 2024 to 21 MAR 2024



ELEV 799 **D** TDZE 773

REIL Rwy 10
TDZ/CL Rwy 6L, 6R, 24L, and 24R
HIRL Rwy 6L-24R, 6R-24L and 10-28

CATEGORY	A	B	C	D
RNP 0.17 DA		1123/30	350 (400-5%)	
RNP 0.30 DA		1176/40	403 (400-5%)	

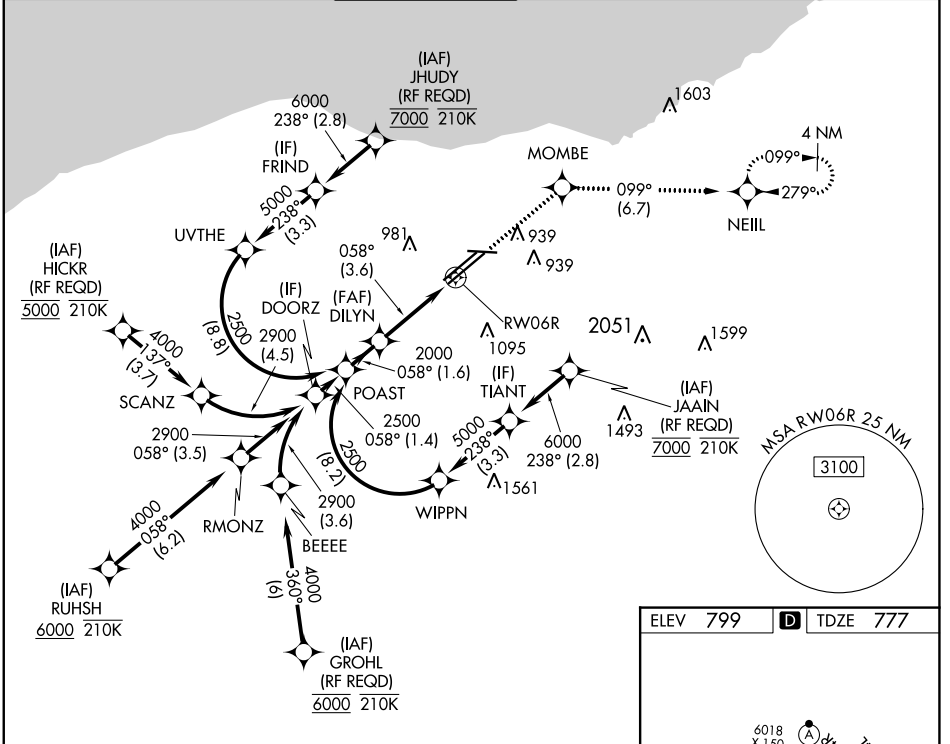
AUTHORIZATION REQUIRED

APP CRS	Rwy Idg	8029
058°	TDZE	777
	Apt Elev	799

RNAV (RNP) Z RWY 6R

CLEVELAND-HOPKINS INTL (CLE)

RNP AR APCH. ▼ For unconsented Baro-VNAV systems, procedure NA below -18°C (0°F) or above 46°C (114°F). For inop ALS, increase RNP 0.15 all Cots visibility to RVR 5500.			MALSR 		MISSED APPROACH: Climb to 3000 direct MOMBE and on track 099° to NEILL and hold. *Missed approach requires minimum climb of 270 feet per NM to 1400.
D-ATIS ARR 127.85 DEP 132.375	CLEVELAND APP CON 126.55 346.325	CLEVELAND TOWER 124.5 273.45	GND CON 121.7 273.45	CLNC DEL 125.05 273.45	CPDLC

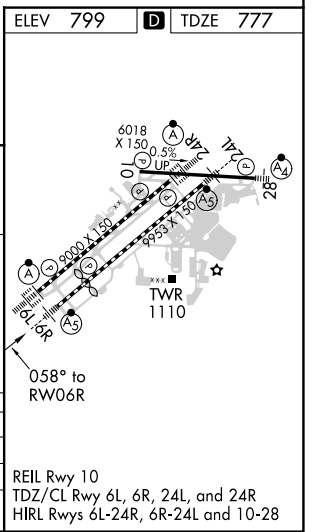


EC-2, 22 FEB 2024 to 21 MAR 2024

EC-2, 22 FEB 2024 to 21 MAR 2024

See planview for multiple IF locations.

POAST	DILYN	MOMBE	NEILL
2500	2000	3000	tr 099°
GP 3.10° TCH 58		RWY 6R	
1.6 NM		3.6 NM	
CATEGORY	A	B	C
RNP 0.15 DA*	1127/30		350 (400- ⁵ / ₈)
RNP 0.30 DA	1229/45		452 (500- ⁷ / ₈)

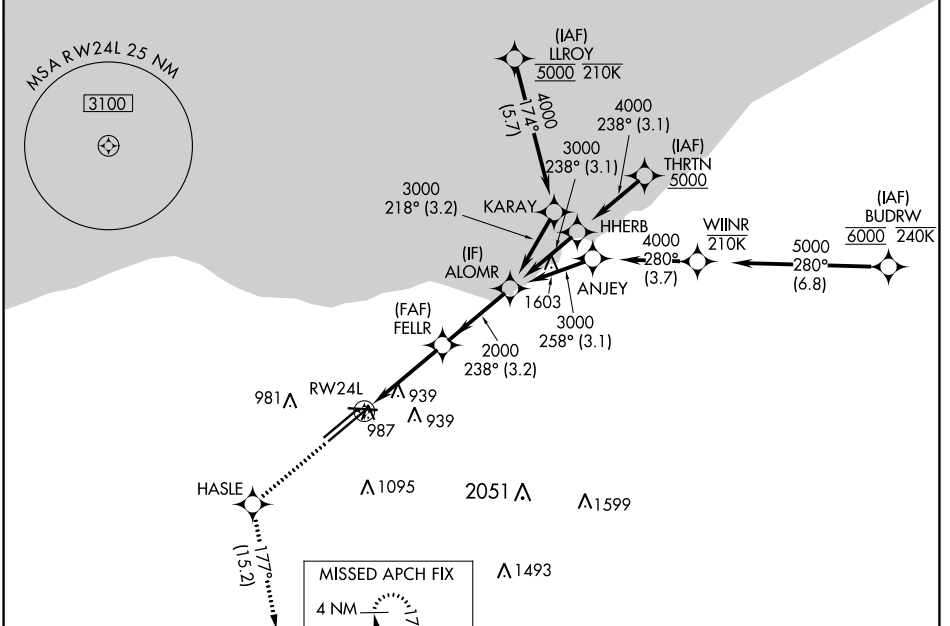


WAAS CH 77506 W24B	APP CRS 238°	Rwy Idg TDZE 786 Apt Elev 799	9953
--	------------------------	---	-------------

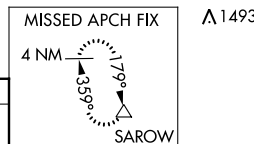
RNAV (GPS) Y RWY 24L

CLEVELAND-HOPKINS INTL (CLE)

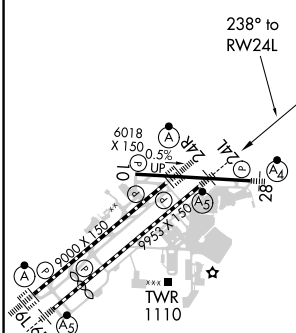
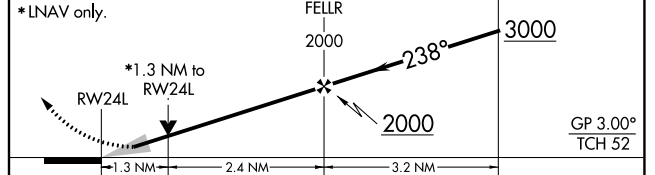
RNP APCH. ▼ Circling Rwy 10 NA at night. For uncompensated Baro-VNAV systems, LNAV/VNAV NA below -1°C or above 54°C.		MALS R ☼	MISSED APPROACH: Climb to 3000 direct HASLE and on track 177° to SAROW and hold.		
D-ATIS ARR 127.85 DEP 132.375	CLEVELAND APP CON 126.55 346.325	CLEVELAND TOWER 124.5 273.45	GND CON 121.7 273.45	CLNC DEL 125.05 273.45	CPDLC



ELEV 799	D	TDZE 786
----------	----------	----------



3000	HASLE	SAROW	VGSI and RNAV glidepath not coincident (VGSI Angle 3.00/TCH 48).
↑	☼	△	



CATEGORY	A	B	C	D
LPV DA	986/18 200 (200-½)			
LNAV/VNAV DA	1180/35 394 (400-⅝)			
LNAV MDA	1240/24 454 (500-½)	1240/45 454 (500-⅞)		
C CIRCLING	1420-1 621 (700-1)	1420-1¾ 621 (700-1¾)	1420-2 621 (700-2)	

REIL Rwy 10
TDZ/CL Rwy 6L, 6R, 24L and 24R
HIRL Rwy 6L-24R, 6R-24L and 10-28

EC-2, 22 FEB 2024 to 21 MAR 2024

EC-2, 22 FEB 2024 to 21 MAR 2024

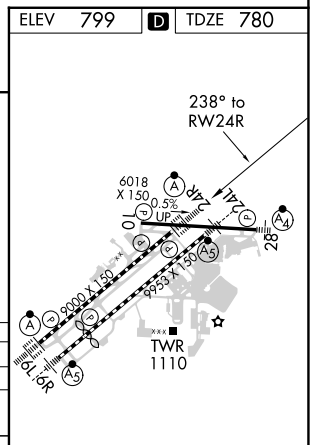
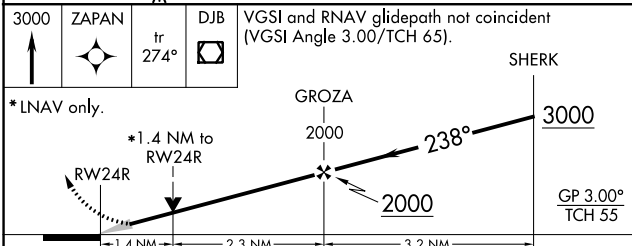
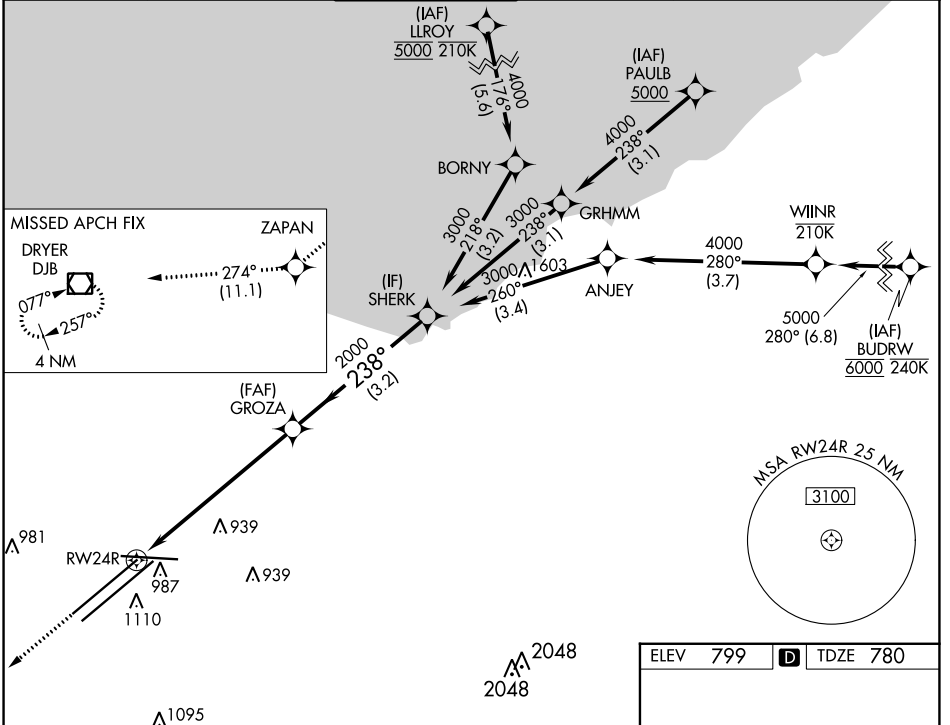
WAAS CH 60904 W24A	APP CRS 238°	Rwy Idg TDZE 780 Apt Elev 799	9000 780 799
--	------------------------	---	---

RNAV (GPS) Y RWY 24R

CLEVELAND-HOPKINS INTL (CLE)

RNP APCH.	ALSF-2	MISSED APPROACH: Climb to 3000 direct ZAPAN and on track 274° to DJB VOR/DME and hold.
Circling Rwy 10 NA at night. For uncompensated Baro-VNAV systems, LNAV/VNAV NA below -19°C or above 54°C.		

D-ATIS ARR 127.85 DEP 132.375	CLEVELAND APP CON 126.55 346.325	CLEVELAND TOWER 124.5 273.45	GND CON 121.7 273.45	CLNC DEL 125.05 273.45	CPDLC
---	--	--	--------------------------------	----------------------------------	-------



CATEGORY	A	B	C	D
LPV DA		980/18	200 (200-½)	
LNAV/VNAV DA		1168/35	388 (400-⅝)	
LNAV MDA	1240/24	460 (500-½)	1240/45	460 (500-⅝)
CIRCLING	1420-1	621 (700-1)	1420-1¾	621 (700-¾)

REIL Rwy 10
TDZ/CL Rwy 6L, 6R, 24L and 24R
HIRL Rwy 6R-24L, 6L-24R and 10-28

EC-2, 22 FEB 2024 to 21 MAR 2024

EC-2, 22 FEB 2024 to 21 MAR 2024

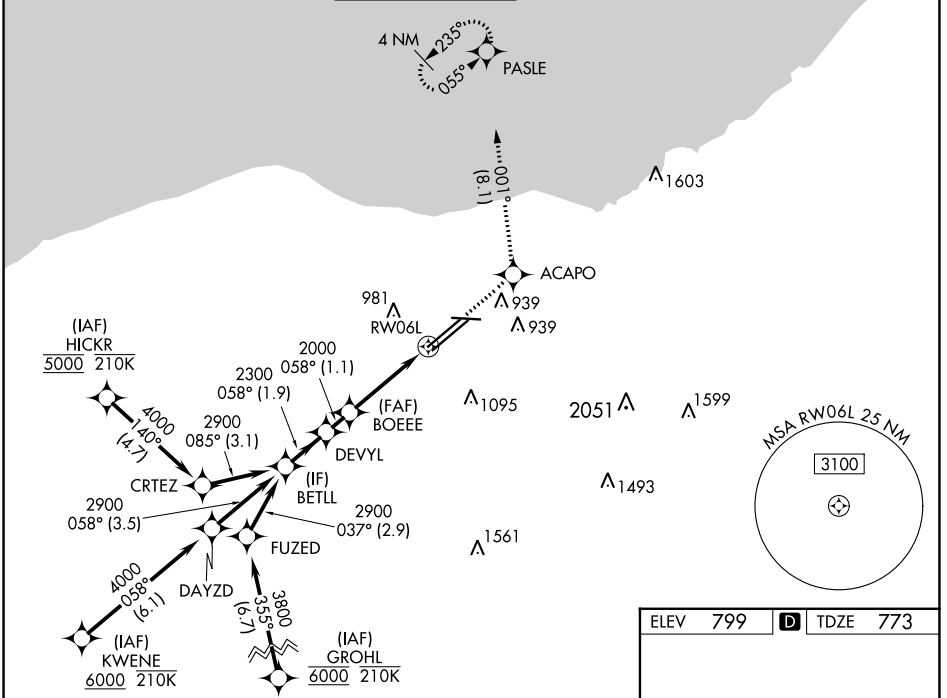
WAAS CH 56204 W06A	APP CRS 058°	Rwy Idg 9000 TDZE 773 Apt Elev 799
--	------------------------	---

RNAV (GPS) Y RWY 6L

CLEVELAND-HOPKINS INTL (CLE)

RNP APCH.	ALSF-2 	MISSED APPROACH: Climb to 3000 direct ACAPO and on track 001° to PASLE and hold.
<p>▼ For uncompensated Baro-VNAV systems, LNAV/VNAV NA below -18°C (0°F) or above 54°C (130°F). Circling Rwy 10 NA at night. For inop ALS, increase LNAV/VNAV all Cats visibility to RVR 5500 and increase LNAV Cats C/D visibility to 1 3/8 SM.</p>		

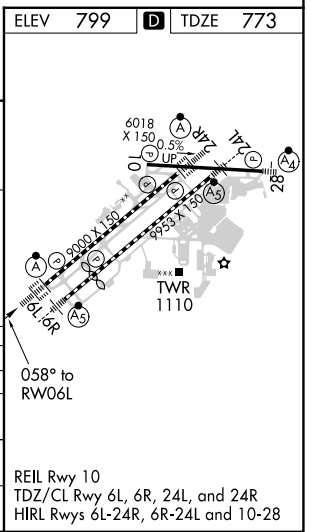
D-ATIS ARR 127.85 DEP 132.375	CLEVELAND APP CON 126.55 346.325	CLEVELAND TOWER 124.5 273.45	GND CON 121.7 273.45	CLNC DEL 125.05 273.45	CPDLC
---	--	--	--------------------------------	----------------------------------	-------



EC-2, 22 FEB 2024 to 21 MAR 2024

EC-2, 22 FEB 2024 to 21 MAR 2024

VGSi and RNAV glidepath not coincident (VGSi Angle 3.00/TCH 69).		3000	ACAPO	PASLE
BETLL		↑	tr 001°	
2900	DEVYL			
058°				
2300	BOEEE			
GP 3.00° TCH 55				
1.9 NM		2000		
1.1 NM				
2.4 NM				
1.3 NM				
CATEGORY	A	B	C	D
LPV DA	973/18		200 (200-1/2)	
LNAV/VNAV DA	1120/30		347 (400-5/8)	
LNAV MDA	1260/24 487 (500-1/2)		1260/50 487 (500-1)	
CIRCLING	1420-1 621 (700-1)		1420-1 3/4 621 (700-1 3/4)	
			1420-2 621 (700-2)	

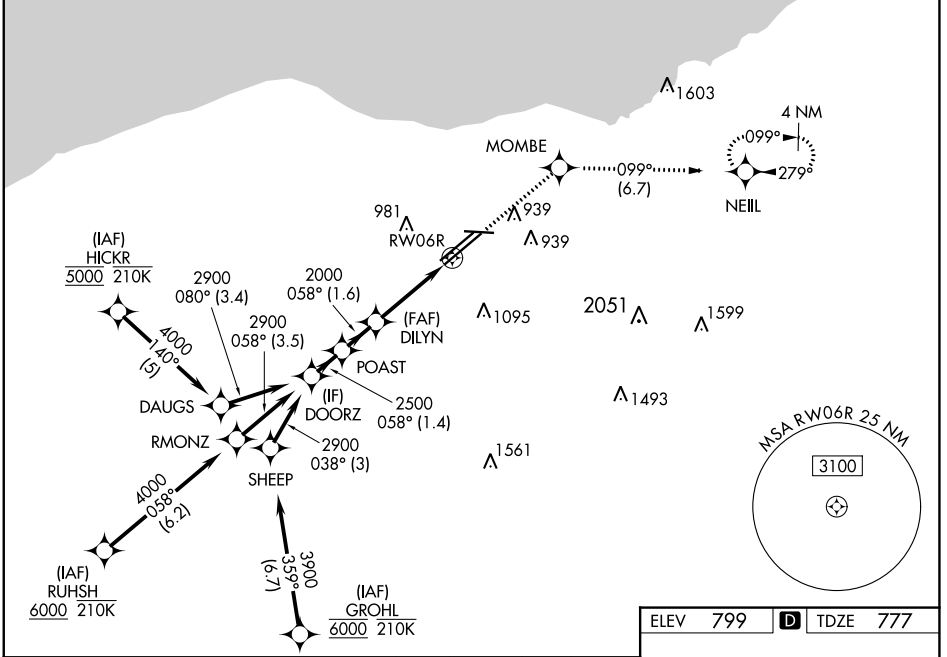


WAAS CH 81806 W06B	APP CRS 058°	Rwy Idg TDZE 777 Apt Elev 799	8029
--	------------------------	---	-------------

RNAV (GPS) Y RWY 6R

CLEVELAND-HOPKINS INTL (CLE)

RNP APCH.		MALSR		MISSED APPROACH: Climb to 3000 direct MOMBE and on track 099° to NEILL and hold.	
<p>▼ For uncompensated Baro-VNAV systems, LNAV/VNAV NA below -18°C (0°F) or above 46°C (114°F). Circling Rwy 10 NA at night. For inop ALS, increase LNAV Cats C/D visibility to 1½ SM.</p>					
D-ATIS ARR 127.85 DEP 132.375	CLEVELAND APP CON 126.55 346.325	CLEVELAND TOWER 124.5 273.45	GND CON 121.7 273.45	CLNC DEL 125.05 273.45	CPDLC

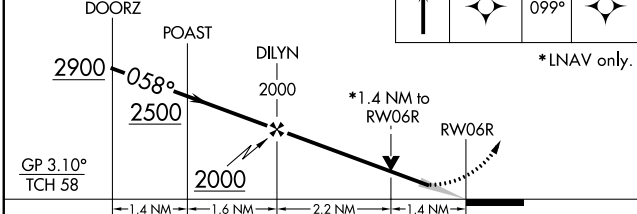


EC-2, 22 FEB 2024 to 21 MAR 2024

EC-2, 22 FEB 2024 to 21 MAR 2024

VGSI and RNAV glidepath not coincident (VGSI Angle 3.00/TCH 73).

3000	MOMBE	tr 099°	NEILL
------	-------	---------	-------



CATEGORY	A	B	C	D
LPV DA		977/18	200 (200-½)	
LNAV/VNAV DA		1227/45	450 (500-¾)	
LNAV MDA	1260/24	483 (500-½)	1260/50	483 (500-1)
C CIRCLING	1420-1	621 (700-1)	1420-1¾ 621 (700-1¾)	1420-2 621 (700-2)

