

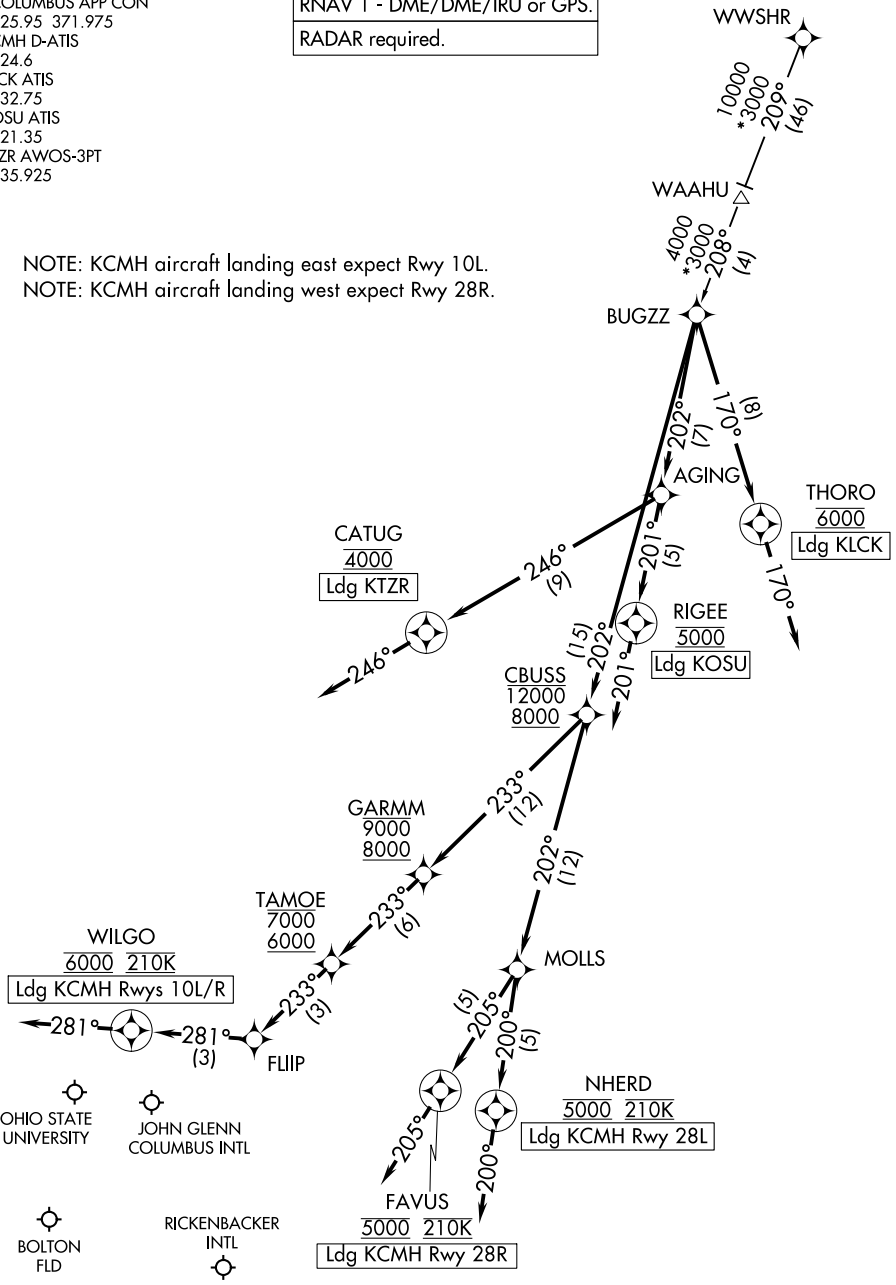
CBUSS TWO ARRIVAL (RNAV)

COLUMBUS, OHIO

COLUMBUS APP CON
 125.95 371.975
 CMH D-ATIS
 124.6
 LCK ATIS
 132.75
 OSU ATIS
 121.35
 TZR AWOS-3PT
 135.925

RNAV 1 - DME/DME/IRU or GPS.
RADAR required.

NOTE: KCMH aircraft landing east expect Rwy 10L.
 NOTE: KCMH aircraft landing west expect Rwy 28R.



EC-2, 22 FEB 2024 to 21 MAR 2024

EC-2, 22 FEB 2024 to 21 MAR 2024

(NARRATIVE ON FOLLOWING PAGE)

NOTE: Chart not to scale.

CBUSS TWO ARRIVAL (RNAV)

COLUMBUS, OHIO

CBUSS TWO ARRIVAL(RNAV)

COLUMBUS, OHIO

ARRIVAL ROUTE DESCRIPTION

WWSHR TRANSITION (WWSHR.CBUSS2)

KCMH: From BUGZZ on track 202° to cross CBUSS between 8000 and 12000.

LANDING KCMH RUNWAYS 10L/R: From CBUSS on track 233° to cross GARMM between 8000 and 9000, then on track 233° to cross TAMOE between 6000 and 7000, then on track 233° to FLIIP, then on track 281° to cross WILGO at 6000 and at 210K, then on track 281°. Expect RADAR vectors to final approach course.

LANDING KCMH RUNWAY 28L: From CBUSS on track 202° to MOLLS, then on track 200° to cross NHERD at 5000 and at 210K, then on track 200°. Expect RADAR vectors to ILS or LOC Rwy 28L approach.

LANDING KCMH RUNWAY 28R: From CBUSS on track 202° to MOLLS, then on track 205° to cross FAVUS at 5000 and at 210K, then on track 205°. Expect RADAR vectors to ILS or LOC Rwy 28R approach.

LANDING KLCK: From BUGZZ on track 170° to cross THORO at 6000, then on track 170°. Expect RADAR vectors to final approach course.

LANDING KOSU: From BUGZZ on track 202° to AGING, then on track 201° to cross RIGEE at 5000, then on track 201°. Expect RADAR vectors to final approach course.

LANDING KTZR: From BUGZZ on track 202° to AGING, then on track 246° to cross CATUG at 4000, then on track 246°. Expect RADAR vectors to final approach course.

EC-2, 22 FEB 2024 to 21 MAR 2024

EC-2, 22 FEB 2024 to 21 MAR 2024

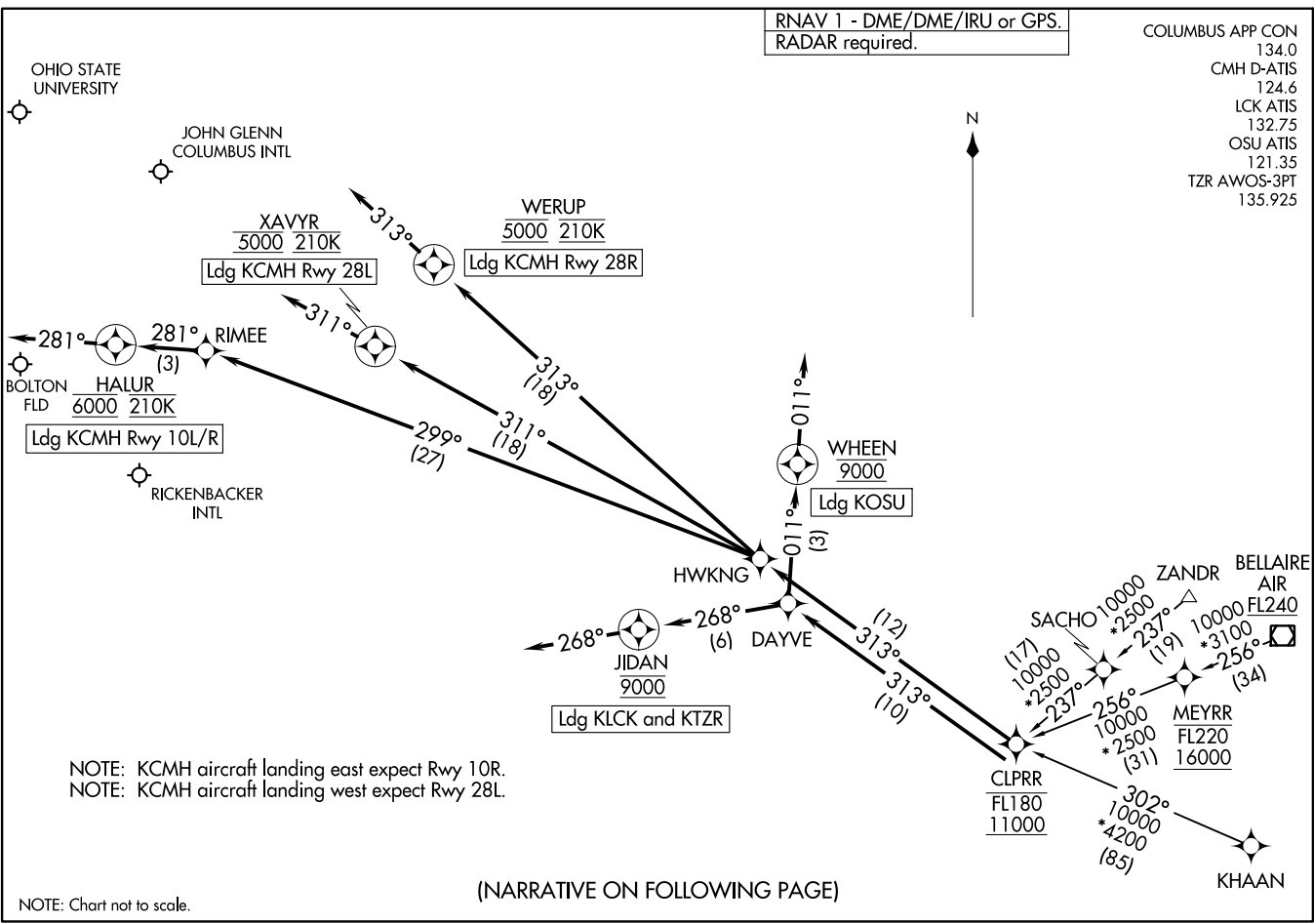
RNAV 1 - DME/DME/IRU or GPS.
RADAR required.

COLUMBUS APP CON 134.0
CMH D-ATIS 124.6
LCK ATIS 132.75
OSU ATIS 121.35
TZR AWOS-3PT 135.925

(CLPRR, CLPRR2) 231.66
CLPRR TWO ARRIVAL (RNAV)

AL-94 (FAA)

COLUMBUS, OHIO



(NARRATIVE ON FOLLOWING PAGE)

NOTE: Chart not to scale.

CLPRR TWO ARRIVAL (RNAV)
(CLPRR, CLPRR2) 231.66
23FEB23

COLUMBUS, OHIO

ARRIVAL ROUTE DESCRIPTION

BELLAIRE TRANSITION (AIR.CLPRR2)

KHAAN TRANSITION (KHAAN.CLPRR2)

ZANDR TRANSITION (ZANDR.CLPRR2)

KCMH: From CLPRR on track 313° to HWKNG.

LANDING KCMH RUNWAY 10L/R: From HWKNG on track 299° to RIMEE, then on track 281° to cross HALUR at 6000 and at 210K, then on track 281°. Expect RADAR vectors to final approach course.

LANDING KCMH RUNWAY 28L: From HWKNG on track 311° to cross XAVYR at 5000 and at 210K, then on track 311°. Expect RADAR vectors to ILS or LOC Rwy 28L approach.

LANDING KCMH RUNWAY 28R: From HWKNG on track 313° to cross WERUP at 5000 and at 210K, then on track 313°. Expect RADAR vectors ILS or LOC Rwy 28R approach.

LANDING KTZR/KLCK: From CLPRR on track 313° to DAYVE, then on track 268° to cross JIDAN at 9000, then on track 268°. Expect RADAR vectors to final approach course.

LANDING KOSU: From CLPRR on track 313° to DAYVE, then on track 011° to cross WHEEN at 9000, then on track 011°. Expect RADAR vectors to final approach course.

EC-2, 22 FEB 2024 to 21 MAR 2024

EC-2, 22 FEB 2024 to 21 MAR 2024

RNAV 1 - DME/DME/IRU or GPS.
RADAR required.

DUBLIN ONE ARRIVAL (RNAV)
(MELZZ:DUBLN1) 12AUG21

(MELZZ:DUBLN1) 23166
DUBLIN ONE ARRIVAL (RNAV)

AL-94 (FAA)

COLUMBUS, OHIO

COLUMBUS APP CON
125.95 371.975
CMH D-ATIS
124.6
LCK ATIS
132.75
OSU ATIS
121.35
TZR AWOS-3PT
135.925

BRYEN
FL230

FLAG CITY
FBC

CHDRS

ESSIE
10000

MERVN

VBILT
5000

TEEZE

CYRAH

IKALE

MELZZ

Ldg KOSU

6000 210K

Ldg KCMH Rwy
28L and Rwy 28R

JADUB
FL240

10000
*2900
080°
(77)

4000
*2900
081°
(12)

4000
*2500
133°
(13)

111°
(5)

9000
8000

POLRS
7000
6000

MAJGE
7000

Ldg KLCK and KTZR

190°
(3)

WESDA
5000

188°
(3)

186°
(3)

131°
(6)

133°
(2)

HELDI
5000 210K

Ldg KCMH Rwy 10R

189°
(5)

189°
(4)

189°
(3)

189°
(3)

101°
(3)

BOLTON
FLD

MADZY
5000 210K

JOHN GLENN
COLUMBUS INTL

101°
(3)

Ldg KCMH Rwy 10L

RICKENBACKER
INTL

15 NM

8 NM

15 NM

8 NM

15 NM

15 NM

15 NM

15 NM

15 NM

NOTE: KCMH aircraft landing east expect Rwy 10L.
NOTE: KCMH aircraft landing west expect Rwy 28R.

NOTE: Chart not to scale.

(NARRATIVE ON FOLLOWING PAGE)

ARRIVAL ROUTE DESCRIPTION

BRYEN TRANSITION (BRYEN.DUBLN1):

ESSIE TRANSITION (ESSIE.DUBLN1):

FLAG CITY TRANSITION (FBC.DUBLN1):

JADUB TRANSITION (JADUB.DUBLN1):

KCMH: From MELZZ on track 148° to DUBLN.

LANDING KCMH RUNWAY 10L: From DUBLN on track 186° to cross ZELON at 5000, then on track 189° to cross MADZY at 5000 and at 210K, then on track 189°. Expect RADAR vectors to ILS or LOC Rwy 10L approach.

LANDING KCMH RUNWAY 10R: From DUBLN on track 188° to cross WESDA at 5000, then on track 189° to cross HELDI at 5000 and at 210K, then on track 189°. Expect RADAR vectors to ILS or LOC Rwy 10R approach.

LANDING KCMH RUNWAY 28L/R: From DUBLN on track 130° to cross TRLGY between 8000 and 9000, then on track 131° to cross POLRS between 6000 and 7000, then on track 133° to TACES, then on track 101° to cross TEEZE at 6000 and at 210K, then on track 101°. Expect RADAR vectors to final approach course.

LANDING KTZR/KLCK: From MELZZ on track 190° to cross MAJGE at 7000, then on track 190°. Expect RADAR vectors to final approach course.

LANDING KOSU: From MELZZ on track 111° to cross VBILT at 5000, then on track 111°. Expect RADAR vectors to final approach course.

EC-2, 22 FEB 2024 to 21 MAR 2024

EC-2, 22 FEB 2024 to 21 MAR 2024

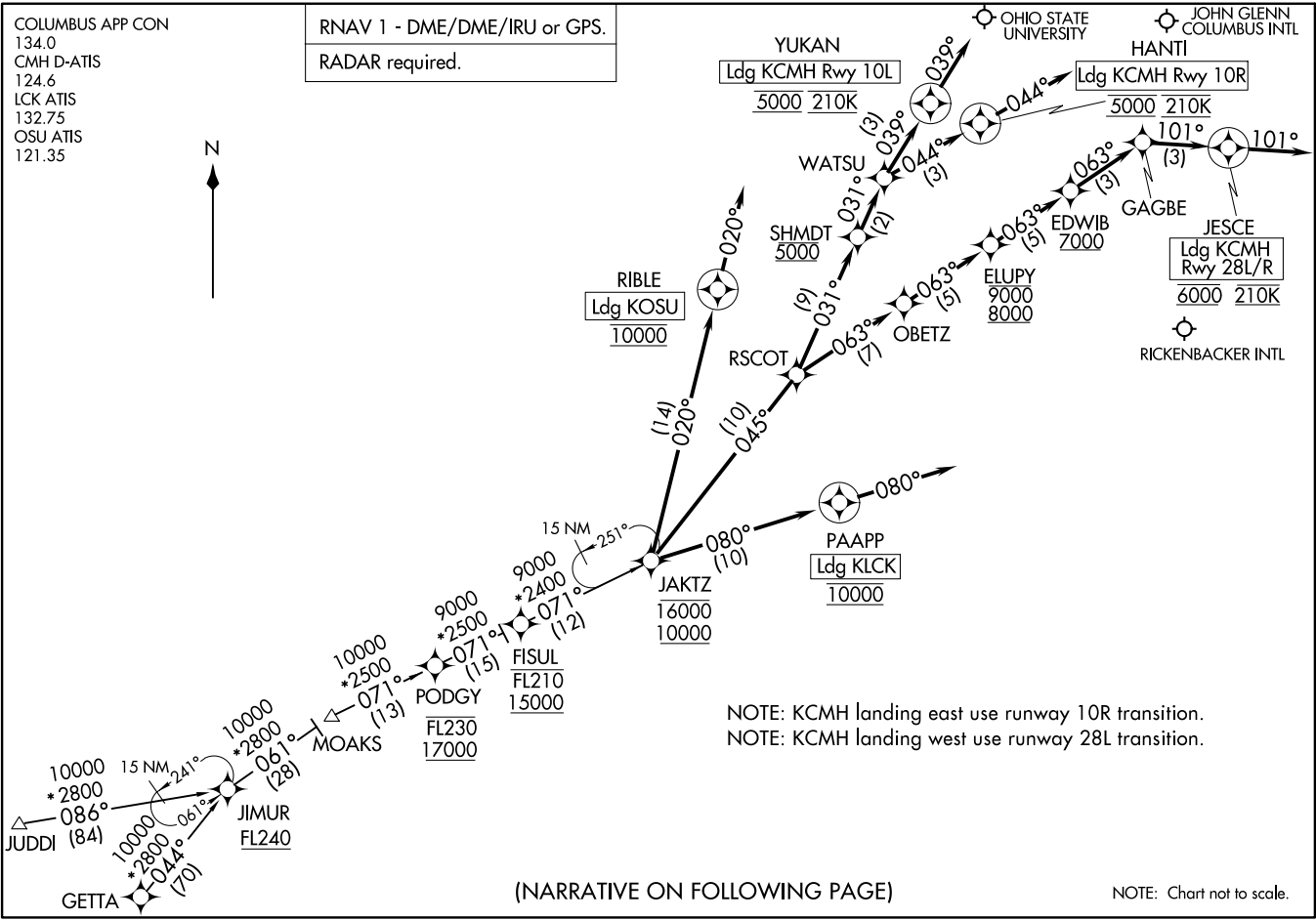
JAKTZ TWO ARRIVAL
(JAKTZ.JAKTZ2) 23FEB23

JAKTZ TWO ARRIVAL (RNAV)
(JAKTZ.JAKTZ2) 23054

AL-94 (FAA)

COLUMBUS APP CON
134.0
CMH D-ATIS
124.6
LCK ATIS
132.75
OSU ATIS
121.35

RNAV 1 - DME/DME/IRU or GPS.
RADAR required.



COLUMBUS, OHIO

COLUMBUS, OHIO

ARRIVAL ROUTE DESCRIPTION

GETTA TRANSITION (GETTA.JAKTZ2)

JUDDI TRANSITION (JUDDI.JAKTZ2)

KCMH: From JAKTZ on track 045° to RSCOT.

LANDING KCMH RUNWAY 10L: From RSCOT on track 031° to cross SHMDT at 5000, then on track 031° to WATSU, then on track 039° to cross YUKAN at 5000 and at 210K, then on track 039°. Expect RNAV (RNP) Z Rwy 10L or RADAR vectors to ILS or LOC RWY 10L approach.

LANDING KCMH RUNWAY 10R: From RSCOT on track 031° to cross SHMDT at 5000, then on track 031° to WATSU, then on track 044° to cross HANTI at 5000 and at 210K, then on track 044°. Expect RNAV (RNP) Z Rwy 10R or RADAR vectors to ILS or LOC Rwy 10R approach.

LANDING KCMH RUNWAY 28L/R: From RSCOT on track 063° to OBETZ, then on track 063° to cross ELUPY between 8000 and 9000, then on track 063° to cross EDWIB at or above 7000, then on track 063° to GAGBE, then on track 101° to cross JESCE at 6000 and at 210K, then on track 101°. Expect RADAR vectors to final approach course.

LANDING KLCK: From JAKTZ on track 080° to cross PAAPP at 10000, then on track 080°. Expect RADAR vectors to final approach course.

LANDING KOSU: From JAKTZ on track 020° to cross RIBLE at 10000, then on track 020°. Expect RADAR vectors to final approach course.

EC-2, 22 FEB 2024 to 21 MAR 2024

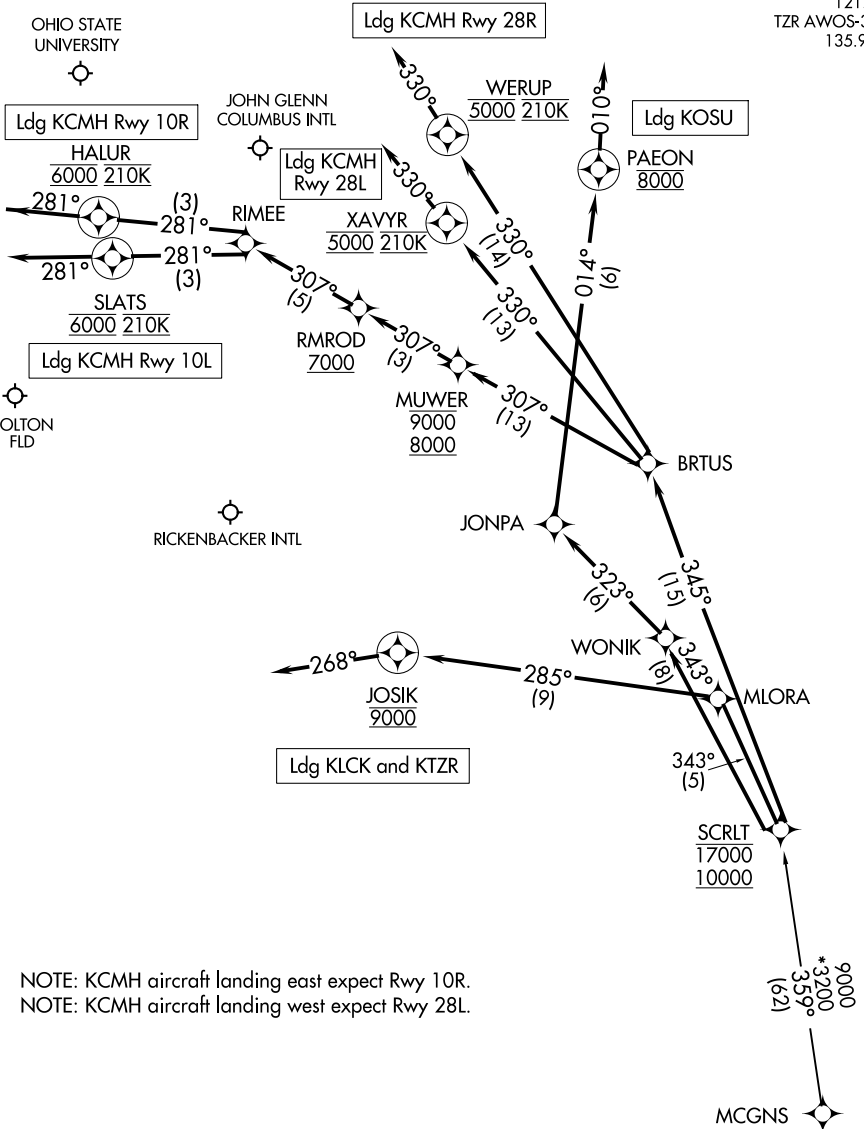
EC-2, 22 FEB 2024 to 21 MAR 2024

SCRLT ONE ARRIVAL (RNAV)

COLUMBUS, OHIO

RNAV 1 - DME/DME/IRU or GPS.
RADAR required.

COLUMBUS APP CON 134.0
 CMH D-ATIS 124.6
 LCK ATIS 132.75
 OSU ATIS 121.35
 TZR AWOS-3PT 135.925



EC-2, 22 FEB 2024 to 21 MAR 2024

EC-2, 22 FEB 2024 to 21 MAR 2024

(NARRATIVE ON FOLLOWING PAGE)

NOTE: Chart not to scale.

SCRLT ONE ARRIVAL (RNAV)

COLUMBUS, OHIO

SCRLT ONE ARRIVAL (RNAV)

COLUMBUS, OHIO

ARRIVAL ROUTE DESCRIPTION

MCGNS TRANSITION (MCGNS.SCRLT1)

KCMH: from SCRLT on track 345° to BRTUS.

LANDING KCMH RUNWAY 10L: From BRTUS on track 307° to cross MUWER between 8000 and 9000, then on track 307° to cross RMROD at or above 7000, then on track 307° to RIMEE, then on track 281° to cross SLATS at 6000 and at 210K, then on track 281°. Expect RADAR vectors to final approach course.

LANDING KCMH RUNWAY 10R: From BRTUS on track 307° to cross MUWER between 8000 and 9000, then on track 307° to cross RMROD at or above 7000, then on track 307° to RIMEE, then on track 281° to cross HALUR at 6000 and at 210K, then on track 281°. Expect RADAR vectors to final approach course.

LANDING KCMH RUNWAY 28L: From BRTUS on track 330° to cross XAVYR at 5000 and at 210K, then on track 330°. Expect RADAR vectors to ILS or LOC Rwy 28L approach.

LANDING KCMH RUNWAY 28R: From BRTUS on track 330° to cross WERUP at 5000 and at 210K, then on track 330°. Expect RADAR vectors to ILS or LOC Rwy 28R approach.

LANDING KTZR/KLCK: From SCRLT on track 343° to MLORA, then on track 285° to cross JOSIK at 9000, then on track 268°. Expect RADAR vectors to final approach course.

LANDING KOSU: From SCRLT on track 343° to WONIK, then on track 323° to JONPA, then on track 014° cross PAEON at 8000, then on track 010°. Expect RADAR vectors to final approach course.

EC-2, 22 FEB 2024 to 21 MAR 2024

EC-2, 22 FEB 2024 to 21 MAR 2024