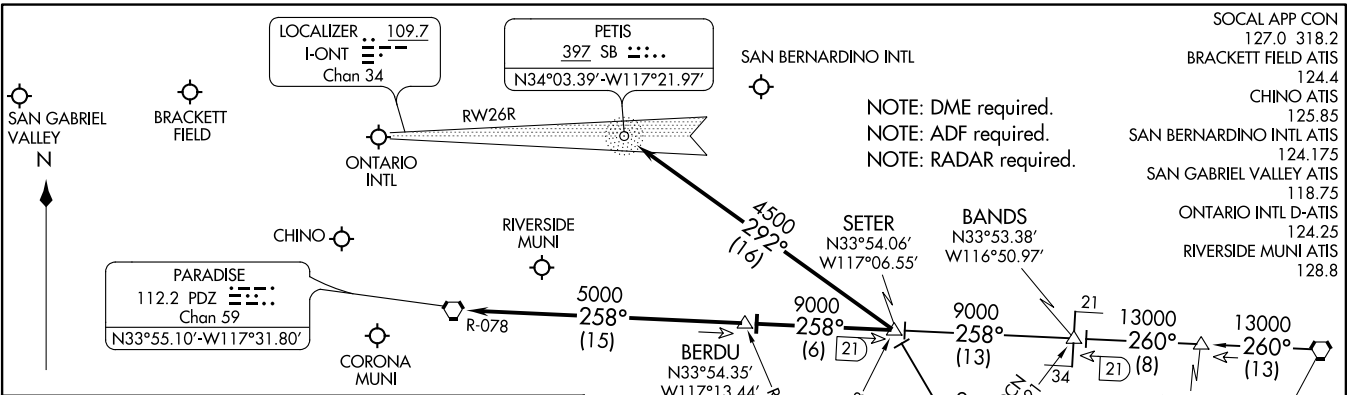


SETER FIVE ARRIVAL  
(SETER,SETER5) 17AUG17

SETER FIVE ARRIVAL  
(SETER,SETER5) 19227



NOTE: DME required.  
 NOTE: ADF required.  
 NOTE: RADAR required.

SOCAL APP CON	127.0	318.2
BRACKETT FIELD ATIS	124.4	
CHINO ATIS	125.85	
SAN BERNARDINO INTL ATIS	124.175	
SAN GABRIEL VALLEY ATIS	118.75	
ONTARIO INTL D-ATIS	124.25	
RIVERSIDE MUNI ATIS	128.8	

### ARRIVAL ROUTE DESCRIPTION

**JULIAN TRANSITION (JLI.SETER5):** From over JLI VORTAC on JLI R-315 to SETER. Thence. . . .

**PALM SPRINGS TRANSITION (PSP.SETER5):** From over PSP VORTAC on PSP R-260 to BANDS, then on PDZ R-078 to SETER. Thence. . . .

**LANDING ONTARIO INTL**  
**RUNWAYS 26L/R:** From over SETER on SB NDB 292° course to SB NDB; expect ILS approach.  
**RUNWAYS 8L/R:** From over SETER on PDZ R-078 to BERDU, then on PDZ R-078 to PDZ VORTAC; expect vectors to final approach course.

**ALL OTHER AIRPORTS**  
 From over SETER via PDZ R-078 to BERDU, then on PDZ R-078 to PDZ VORTAC; expect vectors to final approach course.

**ROTHY**  
 N33°35.59'-W116°53.76'  
**VERTICAL NAVIGATION PLANNING INFORMATION**  
 Expect 12000

**JULIAN**  
 114.0 JLI :---:  
 Chan 87  
 N33°08.43'-W116°35.16'  
 L-4, H-4  
**VERTICAL NAVIGATION PLANNING INFORMATION**  
 Expect FL240

**PALM SPRINGS**  
 115.5 PSP :---:  
 Chan 102  
 N33°52.20'-W116°25.79'  
 L-4, H-4  
**VERTICAL NAVIGATION PLANNING INFORMATION**  
 Expect 16000

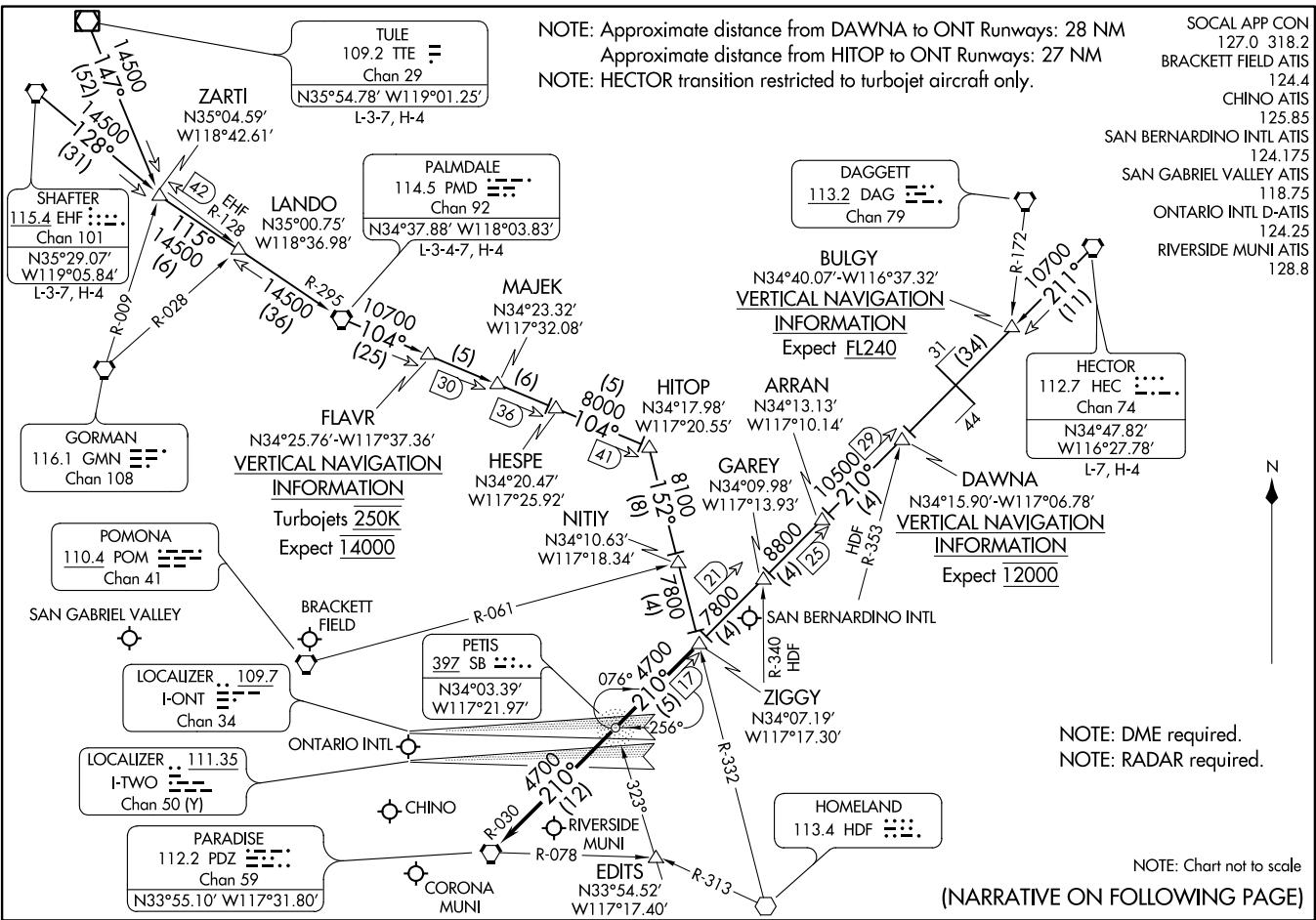
NOTE: Chart not to scale.

ONTARIO, CALIFORNIA

ONTARIO, CALIFORNIA

ZIGGY SEVEN ARRIVAL  
ZIGGY, ZIGGY7] 01FEB18

ONTARIO, CALIFORNIA



NOTE: Approximate distance from DAWNA to ONT Runways: 28 NM  
 Approximate distance from HITOP to ONT Runways: 27 NM  
 NOTE: HECTOR transition restricted to turbojet aircraft only.

- SOCAL APP CON 127.0 318.2
- BRACKETT FIELD ATIS 124.4
- CHINO ATIS 125.85
- SAN BERNARDINO INTL ATIS 124.175
- SAN GABRIEL VALLEY ATIS 118.75
- ONTARIO INTL D-ATIS 124.25
- RIVERSIDE MUNI ATIS 128.8

ZIGGY SEVEN ARRIVAL  
ZIGGY, ZIGGY7] 20030

AL-965 (FAA)

ONTARIO, CALIFORNIA



NOTE: DME required.  
 NOTE: RADAR required.

NOTE: Chart not to scale  
 (NARRATIVE ON FOLLOWING PAGE)

ARRIVAL ROUTE DESCRIPTION

HECTOR TRANSITION (HEC.ZIGGY7): From over HEC VORTAC on HEC R-211 and PDZ R-030 to ZIGGY. Thence . . . .

PALMDALE TRANSITION (PMD.ZIGGY7): From over PMD VORTAC on PMD R-104 to HITOP, then on HDF R-332 to ZIGGY. Thence . . . .

SHAFTER TRANSITION (EHF.ZIGGY7): From over EHF VORTAC on EHF R-128 and PMD R-295 to PMD VORTAC, then on PMD R-104 to HITOP, then on HDF R-332 to ZIGGY. Thence . . . .

TULE TRANSITION (TTE.ZIGGY7): From over TTE VOR/DME on TTE R-147 and PMD R-295 to PMD VORTAC, then on PMD R-104 to HITOP, then on HDF R-332 to ZIGGY. Thence . . . .

LANDING ONTARIO INTL

RUNWAYS 8L/R: From over ZIGGY on PDZ R-030 to PDZ VORTAC; expect RADAR vectors to final approach course.

RUNWAYS 26 L/R: From over ZIGGY direct PETIS NDB or on PDZ R-030 to PETIS; expect RADAR vectors for ILS approach.

ALL OTHER AIRPORTS

From over ZIGGY on PDZ R-030 to PDZ VORTAC; expect RADAR vectors to final approach course.

SW-3, 27 FEB 2020 to 26 MAR 2020

SW-3, 27 FEB 2020 to 26 MAR 2020