


LOC/DME I-EYK <b>111.7</b> Chan <b>54</b>	APP CRS <b>048°</b>	Rwy Idg <b>5500</b> TDZE <b>18</b> Apt Elev <b>19</b>
---	------------------------	---

# ILS or LOC RWY 5

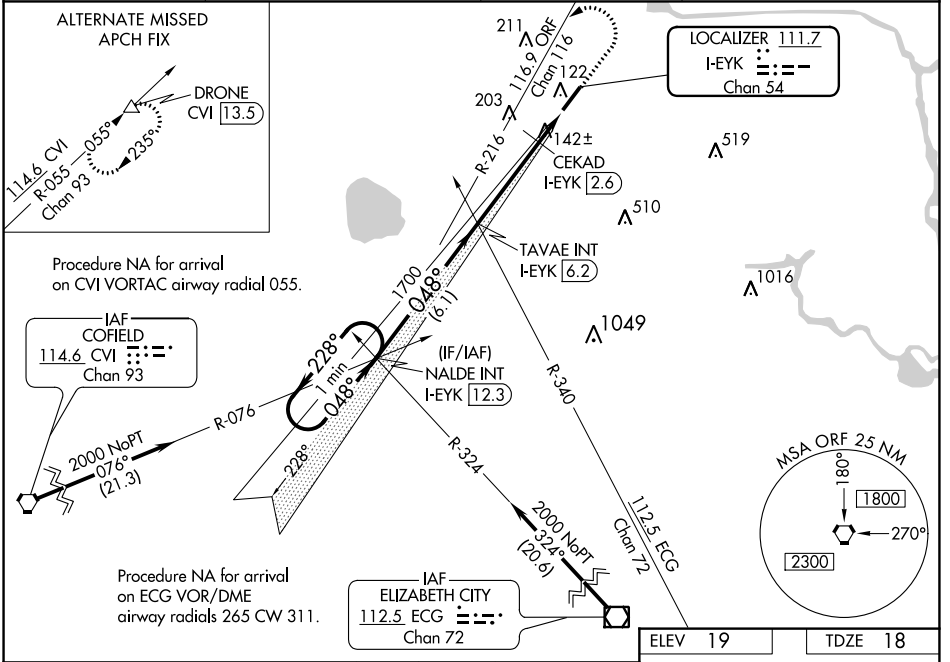
CHESAPEAKE RGNL (CPK)

**⚠** When local altimeter setting not received, use Norfolk Intl altimeter setting and increase all DA 36 feet and all MDA 40 feet; increase CEKAD Fix Minimums S-LOC 5 Cats C and D visibility 1/8 mile. For inoperative MALSR, increase S-LOC 5 Cats C and D visibility to 1 1/8 mile.

**MALSR** 

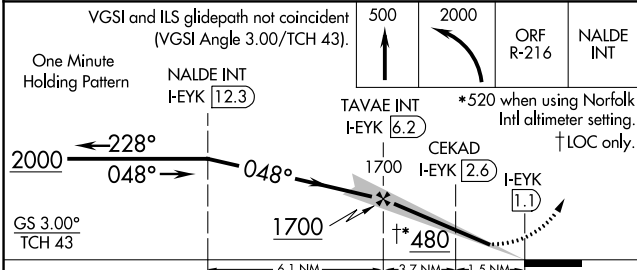
**MISSED APPROACH:** Climb to 500 then climbing left turn to 2000 on ORF VORTAC R-216 to NALDE INT/I-EYK 12.3 DME and hold.

AWOS-3 <b>123.675</b>	NORFOLK APP CON <b>118.9 353.7</b>	GCO <b>135.075</b>	UNICOM <b>123.075 (CTAF) 0</b>
--------------------------	---------------------------------------	-----------------------	-----------------------------------

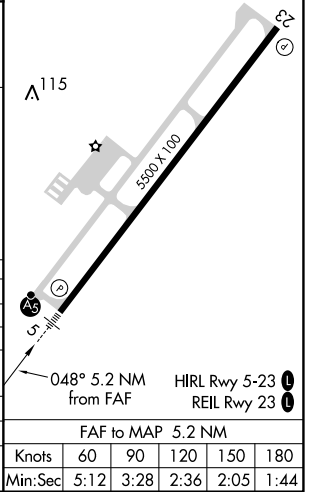


NE-3, 13 AUG 2020 to 10 SEP 2020

NE-3, 13 AUG 2020 to 10 SEP 2020



CATEGORY	A	B	C	D
S-ILS 5	218-1/2 200 (200-1/2)			
S-LOC 5	480-1/2	462 (500-1/2)	480-1	462 (500-1)
CIRCLING	480-1	461 (500-1)	480-1 1/2 461 (500-1 1/2)	580-2 561 (600-2)
<b>CEKAD FIX MINIMUMS</b>				
S-LOC 5	400-1/2	382 (400-1/2)	400-5/8	382 (400-5/8)
CIRCLING	460-1 441 (500-1)	480-1 461 (500-1)	480-1 1/2 461 (500-1 1/2)	580-2 561 (600-2)



FAF to MAP 5.2 NM					
Knots	60	90	120	150	180
Min:Sec	5:12	3:28	2:36	2:05	1:44

WAAS CH <b>65922</b> <b>W23A</b>	APP CRS <b>228°</b>	Rwly Idg TDZE Apt Elev	<b>5500</b> <b>19</b> <b>19</b>
--	------------------------	------------------------------	---------------------------------------

# RNAV (GPS) RWY 23

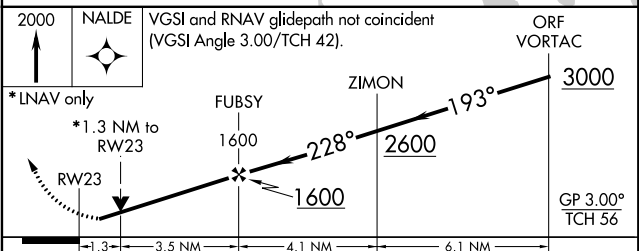
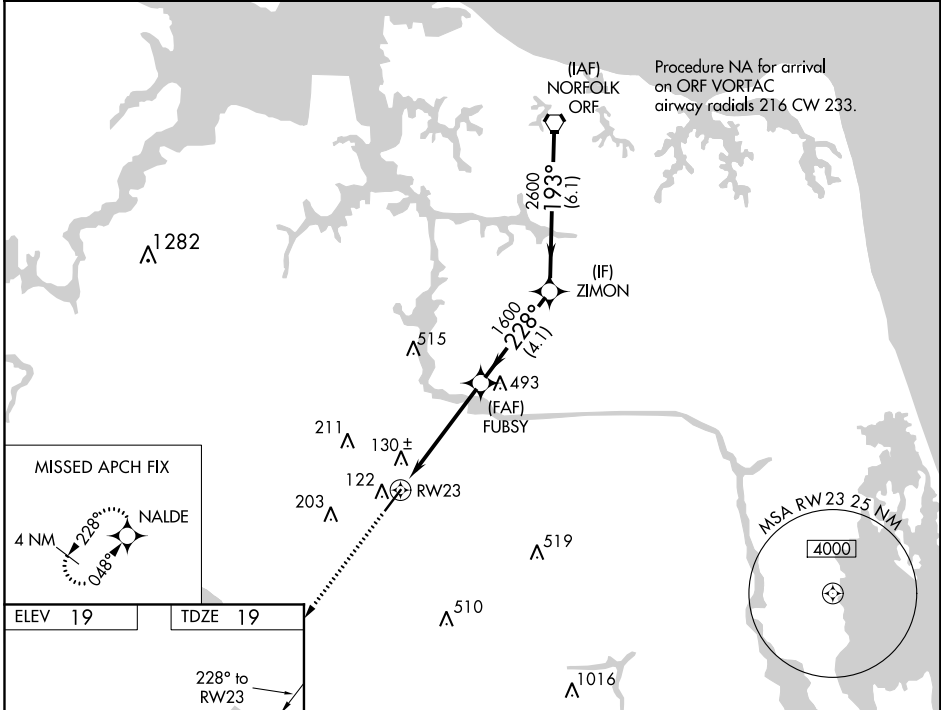
CHESAPEAKE RGNL (CPK)

RNP APCH.

**⚠** Rwy 23 helicopter visibility reduction below 1 SM NA. When local altimeter setting not received, use Norfolk Intl altimeter setting and increase all DA 36 feet and all MDA 40 feet. Baro-VNAV and VDP NA with Norfolk Intl altimeter setting. For uncompensated Baro-VNAV systems, LNAV/VNAV NA below 1.5°C or above 43°C.

MISSED APPROACH: Climb to 2000 direct NALDE and hold.

AWOS-3 <b>123.675</b>	NORFOLK APP CON <b>118.9 353.7</b>	GCO <b>135.075</b>	UNICOM <b>123.075 (CTAF) 0</b>
--------------------------	---------------------------------------	-----------------------	-----------------------------------



CATEGORY	A	B	C	D
LPV DA		311-1	292 (300-1)	
LNAV/VNAV DA		312-1	293 (300-1)	
LNAV MDA	480-1	461 (500-1)	480-1 $\frac{3}{8}$	461 (500-1 $\frac{3}{8}$ )

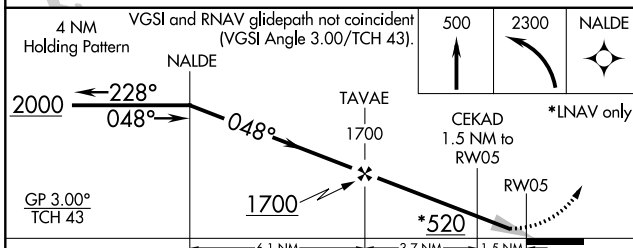
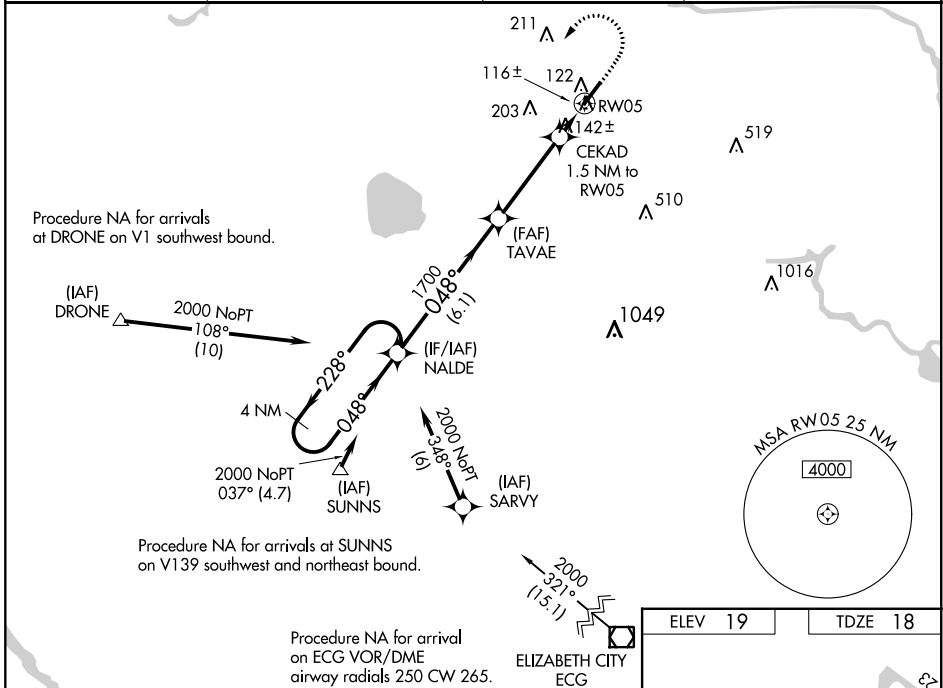
WAAS CH <b>78222</b> <b>W05A</b>	APP CRS <b>048°</b>	Rwy Idg TDZE Apt Elev	<b>5500</b> <b>18</b> <b>19</b>
--	------------------------	-----------------------------	---------------------------------------

# RNAV (GPS) RWY 5

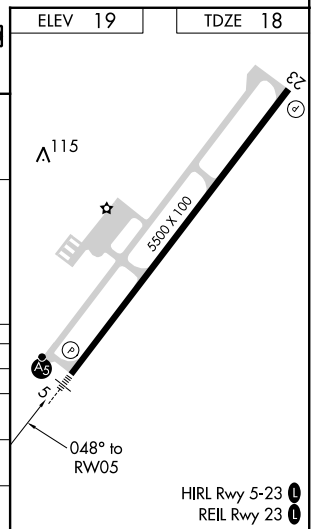
CHESAPEAKE RGNL (CPK)

RNP APCH.	MALSRL	MISSED APPROACH: Climb to 500 then climbing left turn to 2300 direct NALDE and hold.
<p>▼ When local altimeter setting not received, use Norfolk Intl altimeter setting and increase all DA 36 feet and all MDA 40 feet; increase LNAV Cats C and D visibility 1/8 mile. Baro-VNAV NA when using Norfolk Intl altimeter setting. For uncompensated Baro-VNAV systems, LNAV/VNAV NA below -15°C (5°F) or above 43°C (109°F). For inoperative MALSRL, increase LNAV/VNAV all Cats visibility to 1/8 mile.</p>		

AWOS-3 <b>123.675</b>	NORFOLK APP CON <b>118.9 353.7</b>	GCO <b>135.075</b>	UNICOM <b>123.075 (CTAF) 0</b>
--------------------------	---------------------------------------	-----------------------	-----------------------------------



CATEGORY	A	B	C	D
LPV DA		218-1/2	200 (200-1/2)	
LNAV/VNAV DA		278-1/2	260 (300-1/2)	
LNAV MDA	400-1/2	382 (400-1/2)	400-5/8	382 (400-5/8)
CIRCLING	460-1 441 (500-1)	480-1 461 (500-1)	480-1 1/2 461 (500-1 1/2)	580-2 561 (600-2)



NE-3, 13 AUG 2020 to 10 SEP 2020

NE-3, 13 AUG 2020 to 10 SEP 2020