


(ALCOS6.ALCOS) 18032
ALCOS SIX DEPARTURE

CASPER/NATRONA COUNTY INTL (CPR)
 CASPER, WYOMING

SL-72 (FAA)

ATIS
 126.15
 CLNC DEL
 121.9 257.8
 GND CON
 121.9
 CASPER TOWER ★
 118.3 (CTAF) 257.8
 CASPER DEP CON ★
 120.65 354.1
 DENVER CENTER
 135.6 363.025

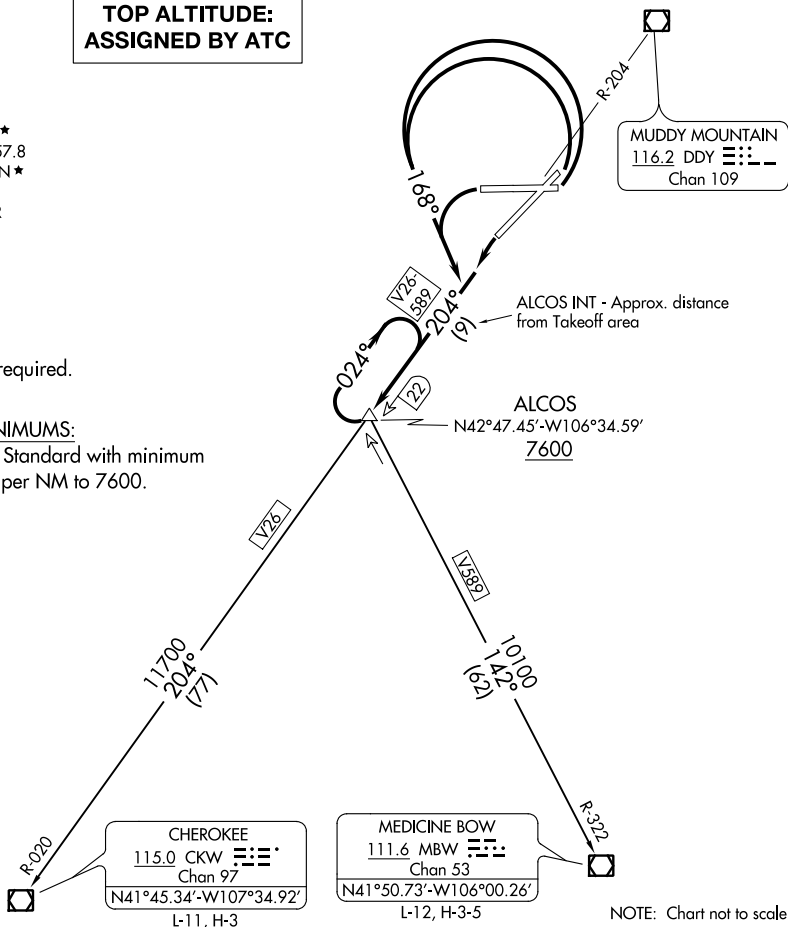
**TOP ALTITUDE:
 ASSIGNED BY ATC**

MUDDY MOUNTAIN
 116.2 DDY 
 Chan 109

NOTE: DME required.

TAKEOFF MINIMUMS:

All Runways: Standard with minimum
 climb of 300' per NM to 7600.



NOTE: Chart not to scale.

DEPARTURE ROUTE DESCRIPTION

TAKEOFF RUNWAYS 3, 8, 26: Turn left heading 168°, thence. . .

TAKEOFF RUNWAY 21: Turn left, thence. . .

. . . climb on DDY VOR/DME R-204 to cross ALCOS INT 22 DME at or above 7600,
 climb-in-hold to MEA for direction of flight, then via (transition) or (assigned route).

CHEROKEE TRANSITION (ALCOS6.CKW): From over ALCOS on DDY R-204 and
 CKW R-020 to CKW VOR/DME.

MEDICINE BOW TRANSITION (ALCOS6.MBW): From over ALCOS on MBW R-322 to
 MBW VOR/DME.

ALCOS SIX DEPARTURE
 (ALCOS6.ALCOS) 21 JUL 16

CASPER, WYOMING
 CASPER/NATRONA COUNTY INTL (CPR)

NW-1, 15 AUG 2019 to 12 SEP 2019

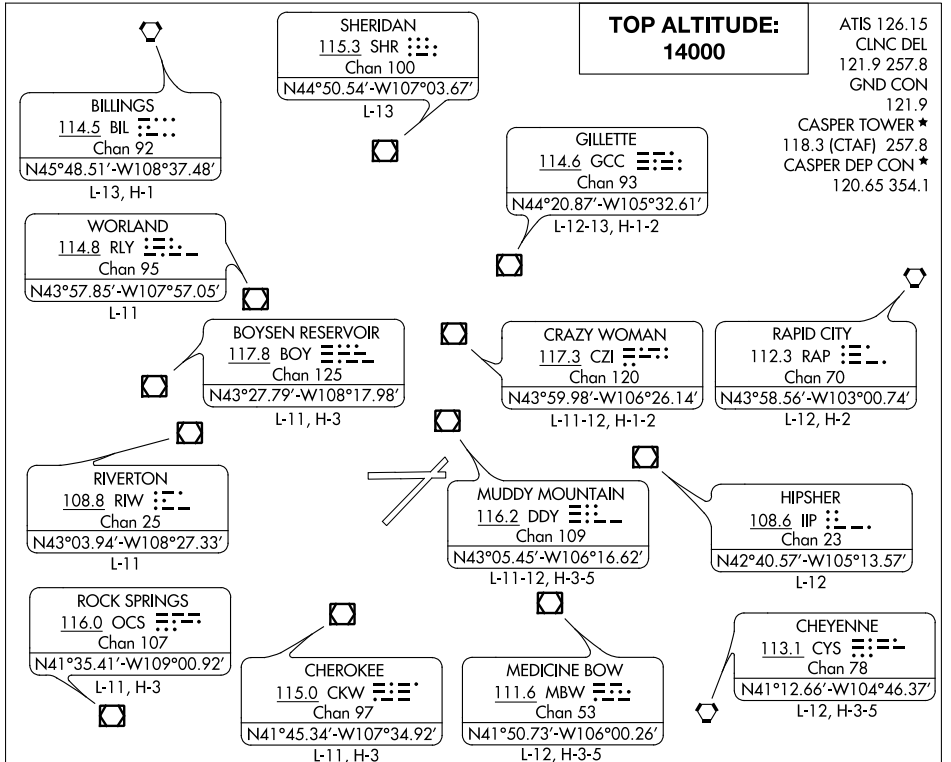
NW-1, 15 AUG 2019 to 12 SEP 2019

CASPER THREE DEPARTURE

SL-72 (FAA)

CASPER/NATRONA COUNTY INTL (CPR)

CASPER, WYOMING



NW-1, 15 AUG 2019 to 12 SEP 2019

NW-1, 15 AUG 2019 to 12 SEP 2019

TAKE-OFF MINIMUMS

Rwy 12, 17, 30, 35, NA- Environmental.

Rwy 3, 8, 26, Standard.

Rwy 21, Standard with a minimum climb of 235 feet per NM to 6700.

NOTE: RADAR required.

NOTE: Chart not to scale.

DEPARTURE ROUTE DESCRIPTION

TAKE-OFF RUNWAY 3: Climb on a heading between 212° CW 094° from DER as assigned by ATC thence . . .

TAKE-OFF RUNWAY 8: Climb on a heading between 257° CW 094° from DER as assigned by ATC thence . . .

TAKE-OFF RUNWAY 21: Climb on a heading between 195° CW 032° from DER as assigned by ATC thence . . .

TAKE-OFF RUNWAY 26: Climb on a heading between 190° CW 077° from DER as assigned by ATC thence . . .

. . . Maintain 14000' or assigned lower altitude. Expect RADAR vectors to filed/assigned fix/route. Expect further clearance to filed altitude ten minutes after departure.

LOST COMMUNICATIONS

If no transmissions are received for one minute after departure, maintain assigned heading until 7,000 feet, then climb to filed altitude via direct DDD VOR/DME, then via assigned route. Runways 3 and 8 turn left to DDD VOR/DME, runways 21 and 26 turn right to DDD VOR/DME.

CASPER THREE DEPARTURE