

LOC I-CTJ 111.7	APP CRS 348°	Rwy ldg 5503
		TDZE 1140
		Apt Elev 1165

ILS or LOC RWY 35

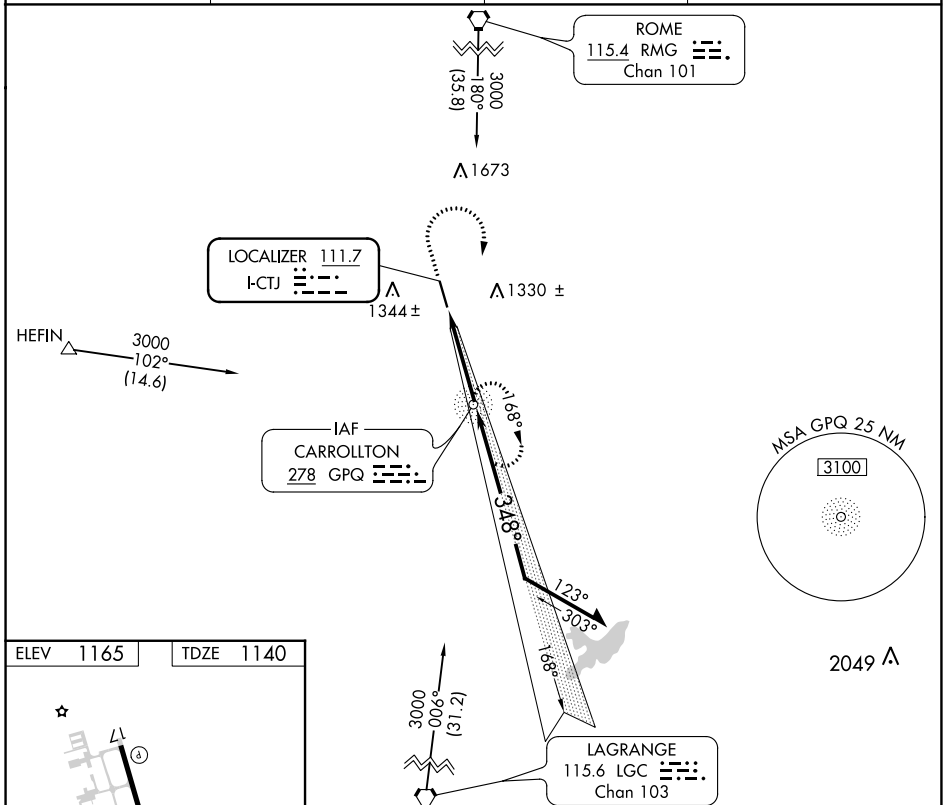
WEST GEORGIA RGNL-O V GRAY FLD (CTJ)

ADF required.

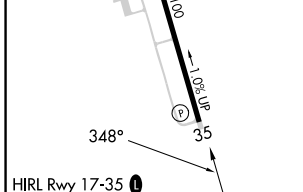
▼ When local altimeter setting not received, use Newnan Coweta County altimeter setting and increase DA to 1430 feet and all visibilities $\frac{1}{4}$ SM; increase all MDAs 100 feet and visibility Cat C and D visibility $\frac{1}{2}$ SM.

MISSED APPROACH: Climb to 1800 then climbing right turn to 3000 direct GPQ NDB and hold.

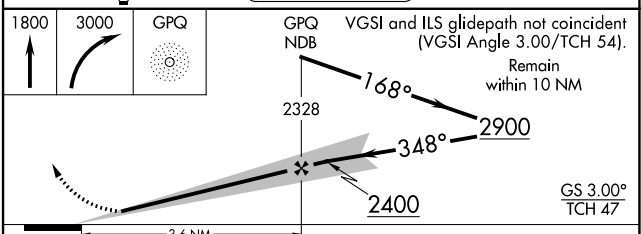
AWOS-3 118.175	ATLANTA APP CON 121.0 268.7	CLNC DEL 121.6	UNICOM 122.975 (CTAF) 0
--------------------------	---------------------------------------	--------------------------	-----------------------------------



ELEV 1165	TDZE 1140
-----------	-----------



FAF to MAP 3.6 NM					
Knots	60	90	120	150	180
Min:Sec	3:36	2:24	1:48	1:26	1:12



CATEGORY	A	B	C	D
S-ILS 35		1340- $\frac{3}{4}$	200 (200- $\frac{3}{4}$)	
S-LOC 35		1480-1	340 (400-1)	
CIRCLING	1660-1 495 (500-1)	1700-1 535 (600-1)	1880-2 715 (800-2)	2000-2 $\frac{3}{4}$ 835 (900-2 $\frac{3}{4}$)

SE-4, 22 FEB 2024 to 21 MAR 2024

SE-4, 22 FEB 2024 to 21 MAR 2024

APP CRS	Rwy Idg	5503
168°	TDZE	1164
	Apt Elev	1165

RNAV (GPS) RWY 17

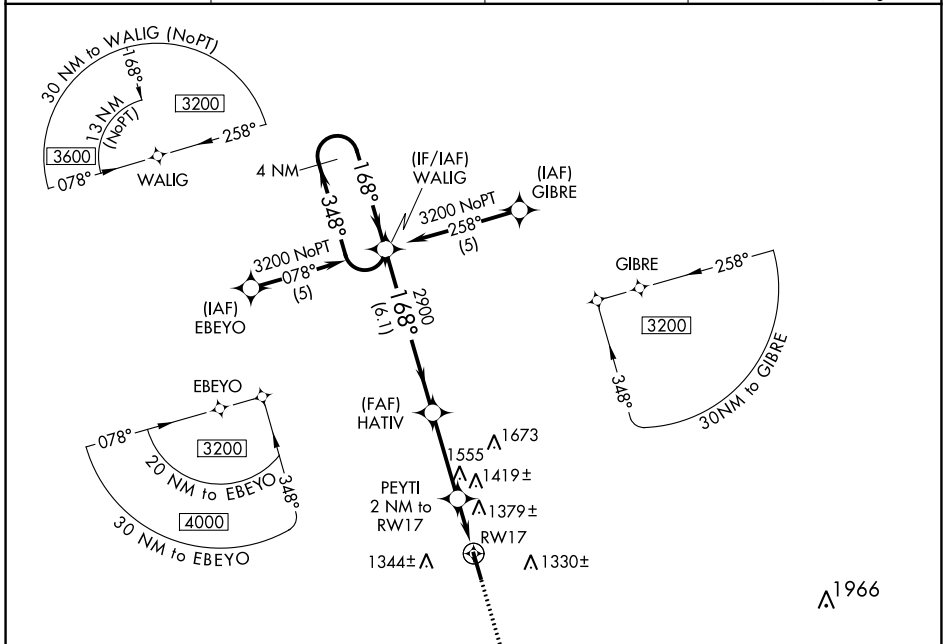
WEST GEORGIA RGNL-O V GRAY FLD (CTJ)

RNP APCH-GPS

▼ When local altimeter setting not received, use Newnan Coweta County altimeter setting and increase all MDAs 100 feet and visibility Cat C ½ SM and Cat D ¼ SM. Helicopter visibility reduction below ¼ SM NA.

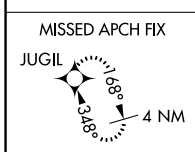
MISSED APPROACH: Climb to 3200 direct JUGIL and hold.

AWOS-3 118.175	ATLANTA APP CON 121.0 268.7	CLNC DEL 121.6	UNICOM 122.975 (CTAF) 0
--------------------------	---------------------------------------	--------------------------	-----------------------------------

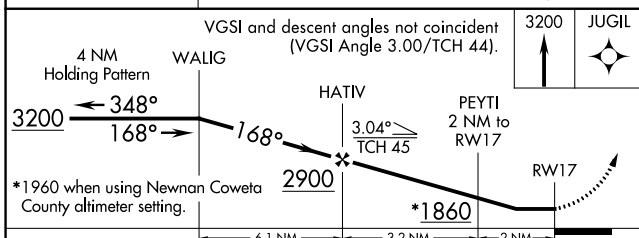
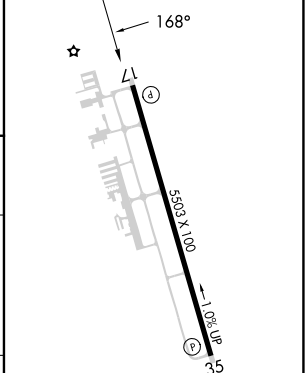


SE-4, 22 FEB 2024 to 21 MAR 2024

SE-4, 22 FEB 2024 to 21 MAR 2024



ELEV 1165	TDZE 1164
-----------	-----------



CATEGORY	A	B	C	D
RNAV MDA	1640-1	476 (500-1)	1640-1¼ 476 (500-1¼)	1640-1½ 476 (500-1½)
CIRCLING	1660-1 495 (500-1)	1700-1 535 (600-1)	1880-2 715 (800-2)	2000-2¾ 835 (900-2¾)

HIRL Rwy 17-35 0

WAAS CH 60907 W35A	APP CRS 348°	Rwy Idg 5503 TDZE 1140 Apt Elev 1165
--	------------------------	---

RNAV (GPS) RWY 35

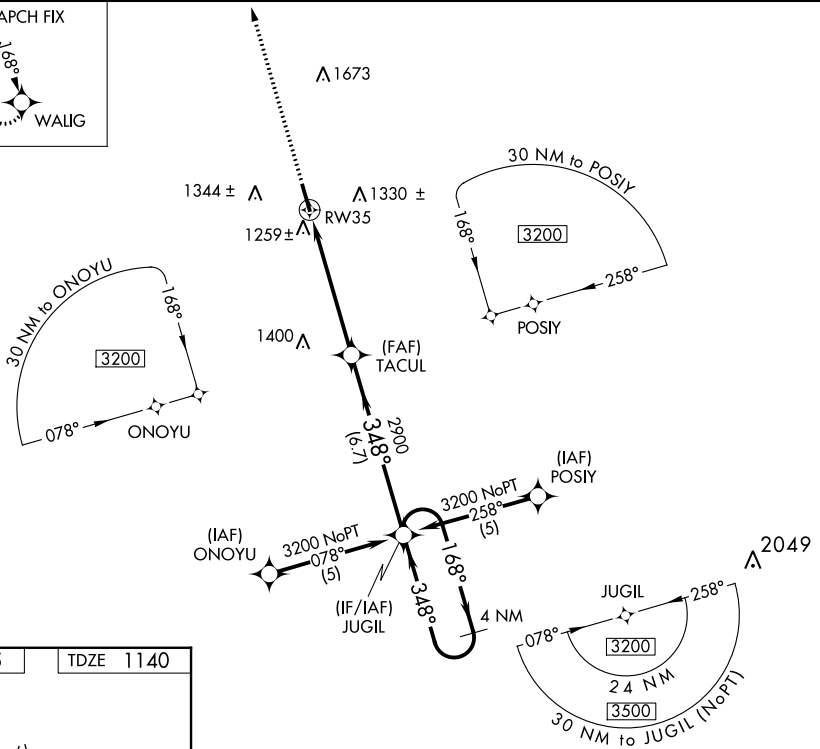
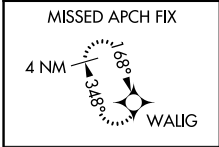
WEST GEORGIA RGNL-O V GRAY FLD (CTJ)

RNP APCH-GPS.

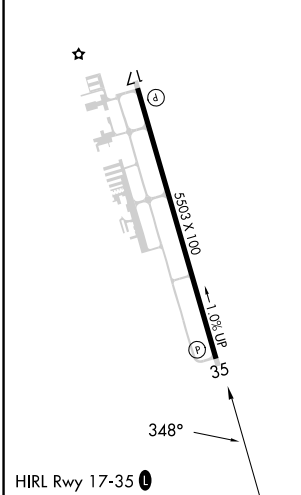
▽ When local altimeter setting not received, use Newnan Coweta County altimeter setting and increase DA to 1480 feet and all visibilities ¼ SM; increase all MDAs 100 feet and visibility Cat C ½ SM and Cat D ¼ SM. VDP NA when using Newnan Coweta County altimeter setting.

MISSED APPROACH:
Climb to 3200 direct
WALIG and hold.

AWOS-3 118.175	ATLANTA APP CON 121.0 268.7	CLNC DEL 121.6	UNICOM 122.975 (CTAF) 0
--------------------------	---------------------------------------	--------------------------	-----------------------------------



ELEV 1165	TDZE 1140
-----------	-----------



3200	WALIG	VGSI and RNAV glidepath not coincident (VGSI Angle 3.00/TCH 54).		4 NM Holding Pattern
*LNAV only.	TACUL	JUGIL	3200	GP 3.00° TCH 47
RW35		1.4 NM to RW35		
1.4	4 NM	6.7 NM		
CATEGORY	A	B	C	D
LPV DA	1390-1 250 (300-1)			
LNAV/VNAV DA	NA			
LNAV MDA	1580-1	440 (500-1)	1580-1¼ 440 (500-1¼)	1580-1½ 440 (500-1½)
CIRCLING	1660-1 495 (500-1)	1700-1 535 (600-1)	1880-2 715 (800-2)	2000-2¾ 835 (900-2¾)