

APP CRS	Rwy Idg	5004
216°	TDZE	717
	Apt Elev	717

RNAV (GPS) RWY 22

SHARP COUNTY RGNL (CVK)

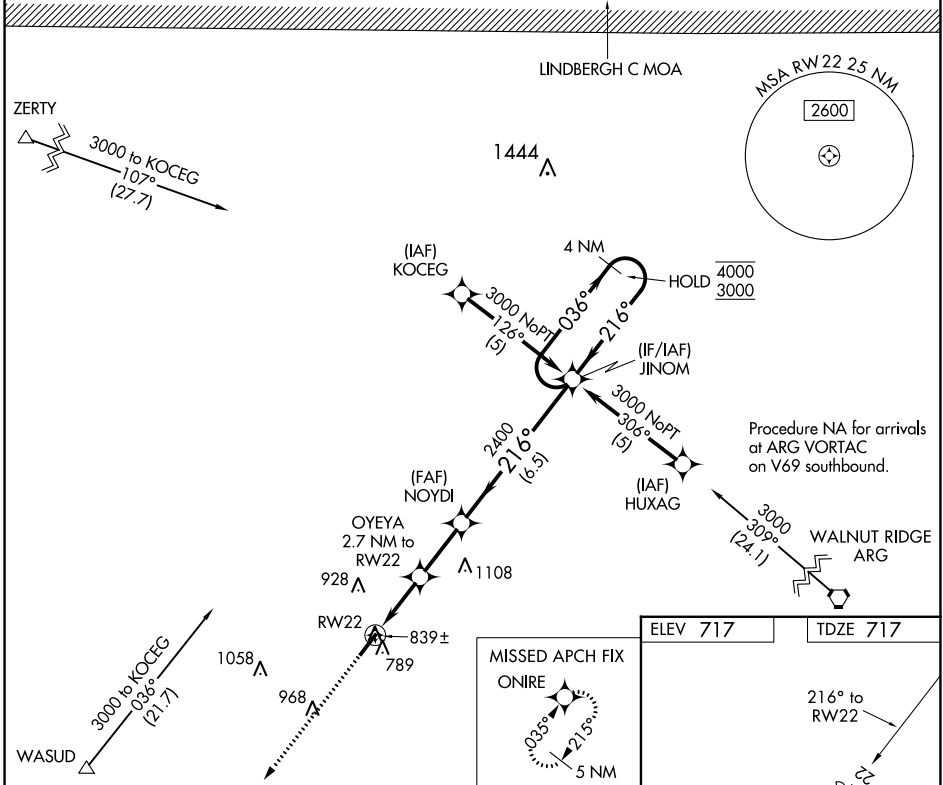
RNP APCH.

▽ Rwy 22 helicopter visibility reduction below 3/4 SM NA. Circling Rwy 4 NA at night. Use Walnut Ridge Rgnl altimeter setting; when not received, use Jonesboro Municipal altimeter setting and increase all MDAs 60 feet, increase LNAV Cat C visibility 1/8 SM and Circling Cat C visibility 1/4 SM.

▲ NA

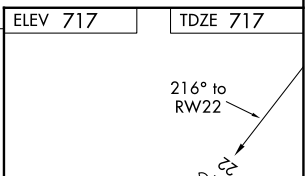
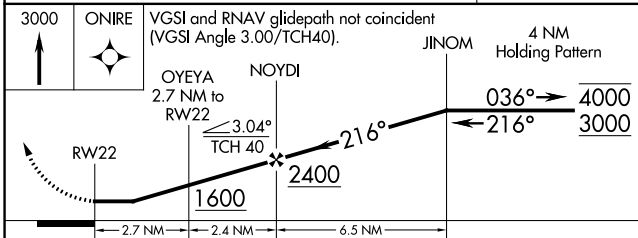
MISSED APPROACH: Climb to 3000 direct ONIRE and hold.

ARG AWOS-3PT 126.525	MEMPHIS CENTER 120.075 289.4	UNICOM 122.7 (CTAF) 0
--------------------------------	--	---------------------------------



SC-1, 22 FEB 2024 to 21 MAR 2024

SC-1, 22 FEB 2024 to 21 MAR 2024



CATEGORY	A	B	C	D
LNAV MDA	1360-1	643 (700-1)	1360-1 7/8 643 (700-1 7/8)	NA
CIRCLING	1400-1	683 (700-1)	1420-2 703 (800-2)	NA

MIRL Rwy 4-22 0

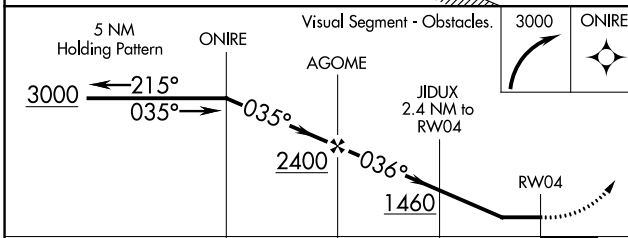
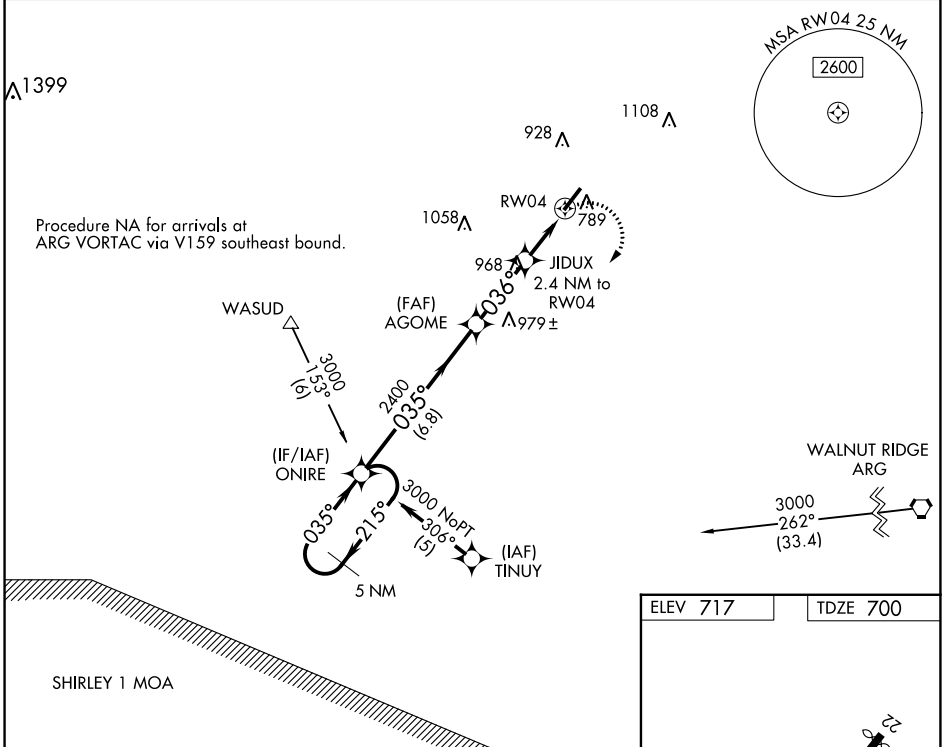
APP CRS	Rwy Idg	5158
036°	TDZE	700
	Apt Elev	717

RNAV (GPS) RWY 4

SHARP COUNTY RGNL (CVK)

RNP APCH.	<p>Use Walnut Ridge altimeter setting; when not received, use Jonesboro Municipal altimeter setting and increase all MDAs 60 feet and Circling Cat C visibility ¼ SM. Rwy 4 helicopter visibility reduction below 1 SM NA. Straight-in Rwy 4 NA at night, Circling Rwy 4 NA at night.</p>	<p>MISSED APPROACH: Climbing right turn to 3000 direct ONIRE and hold.</p>
<p>▼ Use Walnut Ridge altimeter setting; when not received, use Jonesboro Municipal altimeter setting and increase all MDAs 60 feet and Circling Cat C visibility ¼ SM. Rwy 4 helicopter visibility reduction below 1 SM NA. Straight-in Rwy 4 NA at night, Circling Rwy 4 NA at night.</p>		

ARG AWOS-3PT 126.525	MEMPHIS CENTER 120.075 289.4	UNICOM 122.7 (CTAF)
--------------------------------	--	-------------------------------



ELEV 717	TDZE 700
----------	----------

MIRL Rwy 4-22

SC-1, 22 FEB 2024 to 21 MAR 2024

SC-1, 22 FEB 2024 to 21 MAR 2024