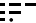



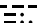
# LAMMA SEVEN DEPARTURE

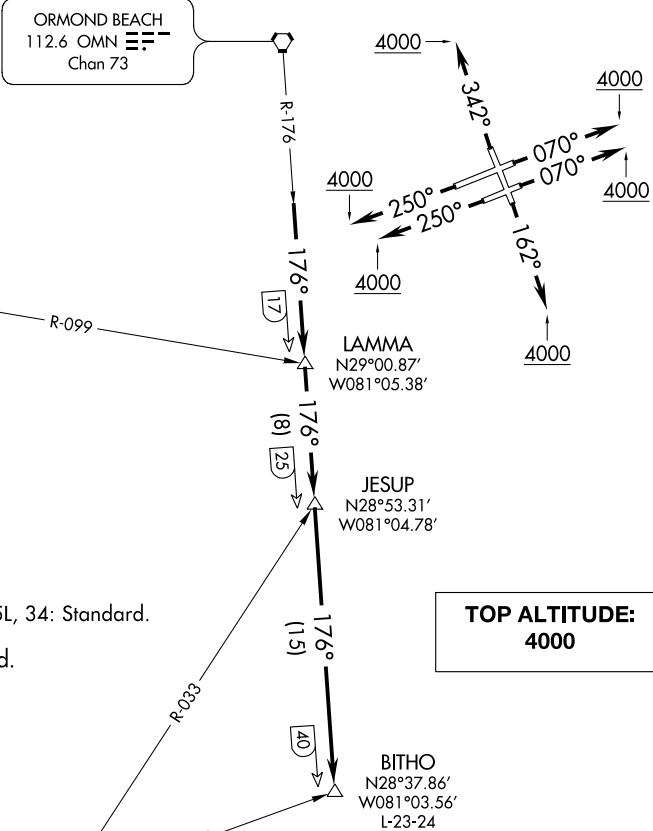
ATIS  
132.875  
CLNC DEL  
119.3  
GND CON  
121.9 348.6  
DAYTONA TOWER  
120.7 257.8  
DAYTONA DEP CON  
127.075 351.95

ORMOND BEACH  
112.6 OMN   
Chan 73

OCALA  
113.7 OCF   
Chan 84

**TAKEOFF MINIMUMS**  
Rwys 7L, 7R, 16, 25R, 25L, 34: Standard.  
**NOTE: RADAR required.**

ORLANDO  
112.2 ORL   
Chan 59



SE-3, 28 JAN 2021 to 25 FEB 2021

SE-3, 28 JAN 2021 to 25 FEB 2021

## DEPARTURE ROUTE DESCRIPTION

- TAKEOFF RUNWAY 7L:** Climb heading 070° to 4000 or as assigned by ATC, thence . . .
- TAKEOFF RUNWAY 7R:** Climb heading 070° to 4000 or as assigned by ATC, thence . . .
- TAKEOFF RUNWAY 16:** Climb heading 162° to 4000 or as assigned by ATC, thence . . .
- TAKEOFF RUNWAY 25R:** Climb heading 250° to 4000 or as assigned by ATC, thence . . .
- TAKEOFF RUNWAY 25L:** Climb heading 250° to 4000 or as assigned by ATC, thence . . .
- TAKEOFF RUNWAY 34:** Climb heading 342° to 4000 or as assigned by ATC, thence . . .

. . . Expect vectors to intercept OMN R-176 to BITHO INT/OMN 40 DME, then via assigned route. Expect clearance to filed altitude. Flight level ten (10) minutes after departure.

# LAMMA SEVEN DEPARTURE

(ROYES7.ROYES) 20086

# ROYES SEVEN DEPARTURE

AL-110

DAYTONA BEACH INTL (DAB)  
DAYTONA BEACH, FLORIDA

ATIS  
132.875  
CLNC DEL  
119.3  
GND CON  
121.9 348.6  
DAYTONA TOWER  
120.7 257.8  
DAYTONA DEP CON  
127.075 351.95

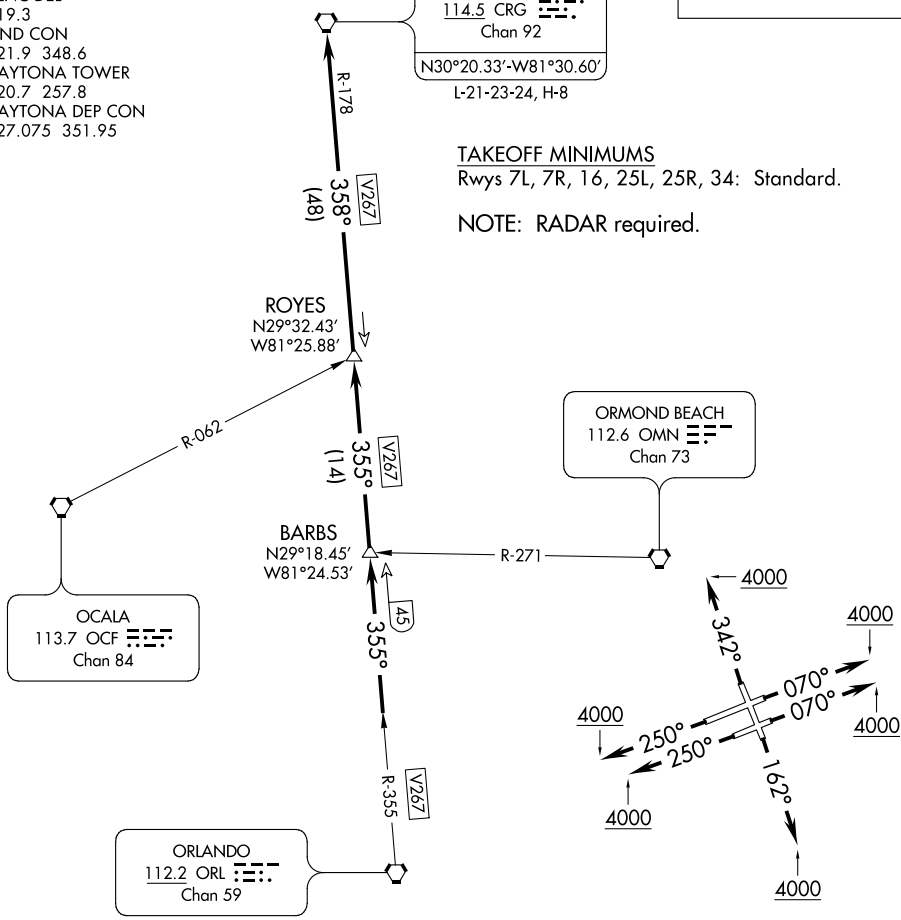
**TOP ALTITUDE:  
4000**

CRAIG  
114.5 CRG  
Chan 92  
N30°20.33'-W81°30.60'  
L-21-23-24, H-8

### TAKEOFF MINIMUMS

Rwys 7L, 7R, 16, 25L, 25R, 34: Standard.

NOTE: RADAR required.



NOTE: Chart not to scale.

### DEPARTURE ROUTE DESCRIPTION

- TAKEOFF RUNWAY 7L: Climb heading 070° to 4000 or as assigned by ATC, thence . . .
- TAKEOFF RUNWAY 7R: Climb heading 070° to 4000 or as assigned by ATC, thence . . .
- TAKEOFF RUNWAY 16: Climb heading 162° to 4000 or as assigned by ATC, thence . . .
- TAKEOFF RUNWAY 25L: Climb heading 250° to 4000 or as assigned by ATC, thence . . .
- TAKEOFF RUNWAY 25R: Climb heading 250° to 4000 or as assigned by ATC, thence . . .
- TAKEOFF RUNWAY 34: Climb heading 342° to 4000 or as assigned by ATC, thence . . .

. . . Expect vectors to intercept CRG R-178 to CRG VORTAC, then via assigned route.  
Expect clearance to filed altitude/flight level ten (10) minutes after departure.

# ROYES SEVEN DEPARTURE

(ROYES7.ROYES) 25JUN15

DAYTONA BEACH, FLORIDA  
DAYTONA BEACH INTL (DAB)

SE-3, 28 JAN 2021 to 25 FEB 2021

SE-3, 28 JAN 2021 to 25 FEB 2021