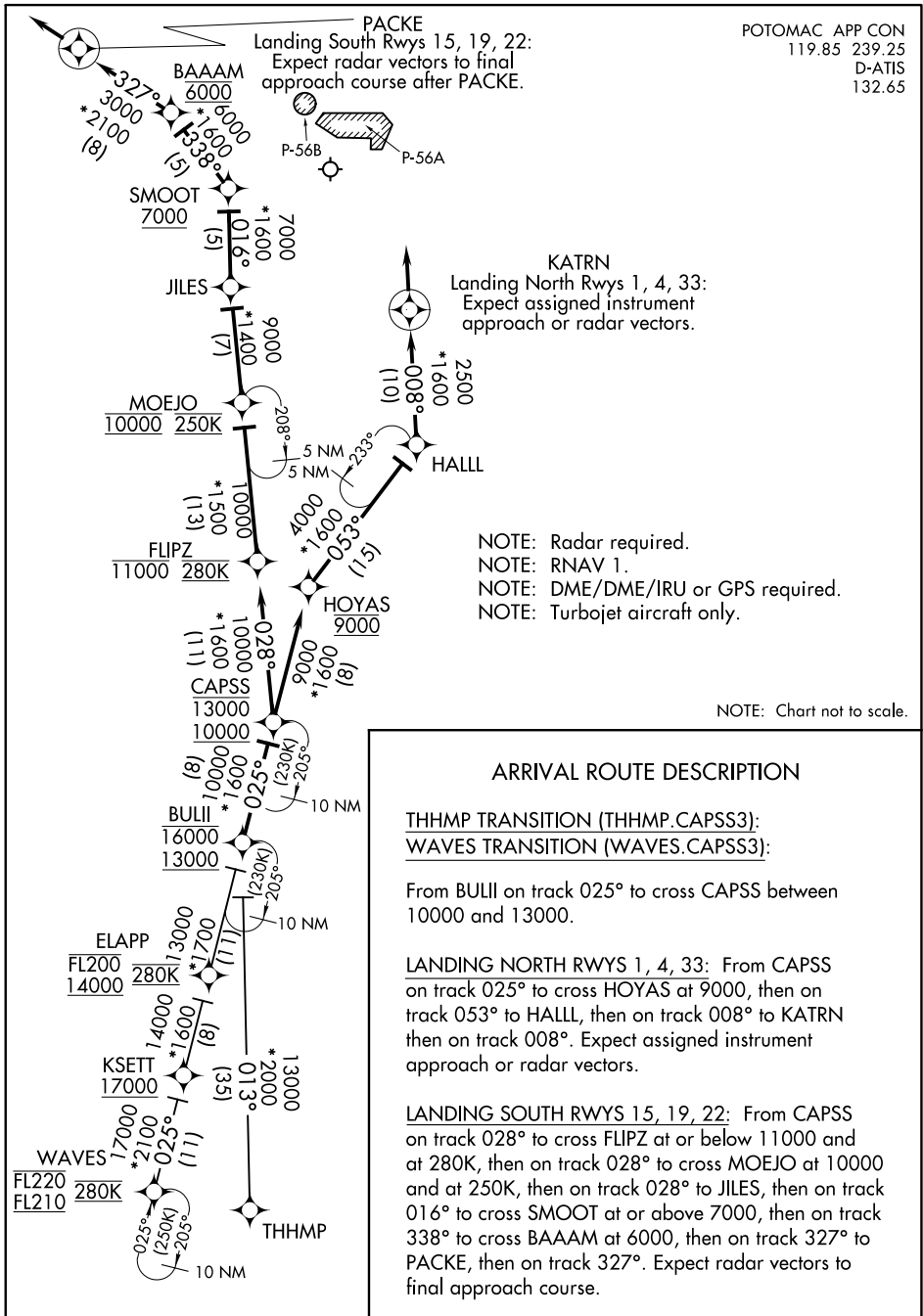


POTOMAC APP CON
119.85 239.25
D-ATIS
132.65



NE-3, 22 FEB 2024 to 21 MAR 2024

NE-3, 22 FEB 2024 to 21 MAR 2024

(CLIPR.CLIPR3) 23222

CLIPR THREE ARRIVAL (RNAV)

RONALD REAGAN WASHINGTON NTL (DCA)
WASHINGTON, DC

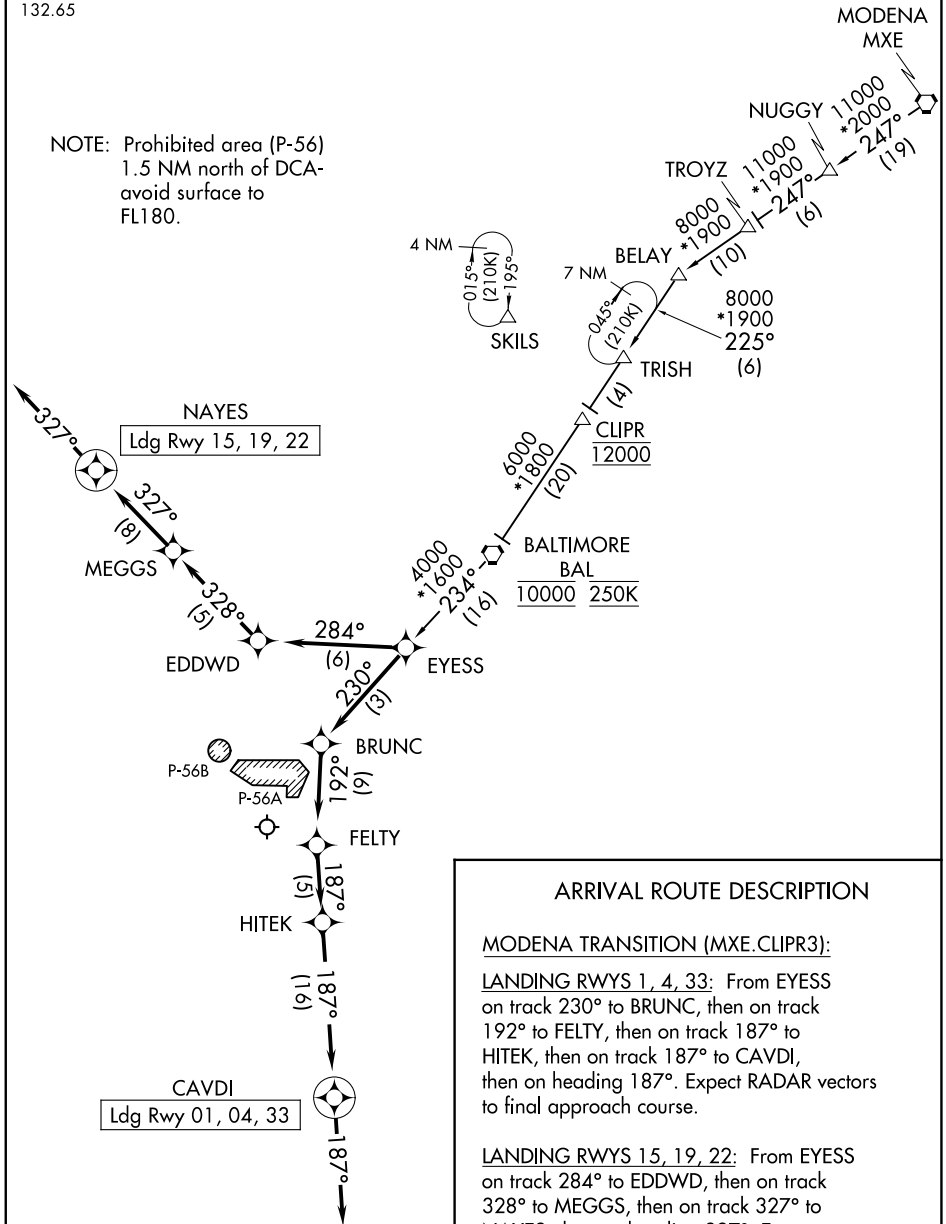
AL-443 (FAA)

POTOMAC APP CON
128.7 307.9
D-ATIS
132.65

RNAV 1 - DME/DME/IRU or GPS.

RADAR required.

NOTE: Prohibited area (P-56)
1.5 NM north of DCA-
avoid surface to
FL180.



NE-3, 22 FEB 2024 to 21 MAR 2024

NE-3, 22 FEB 2024 to 21 MAR 2024

ARRIVAL ROUTE DESCRIPTION

MODENA TRANSITION (MXE.CLIPR3):
LANDING RWYS 1, 4, 33: From EYESS on track 230° to BRUNC, then on track 192° to FELTY, then on track 187° to HITEK, then on heading 187°. Expect RADAR vectors to final approach course.

LANDING RWYS 15, 19, 22: From EYESS on track 284° to EDDWD, then on track 328° to MEGGS, then on track 327° to NAYES, then on heading 327°. Expect RADAR vectors to final approach course.

NOTE: Chart not to scale.

CLIPR THREE ARRIVAL (RNAV)
(CLIPR.CLIPR3) 10AUG23

WASHINGTON, DC
RONALD REAGAN WASHINGTON NTL (DCA)

DEALE THREE ARRIVAL (RNAV)
(BUILT.DEALE3) 29MAR18

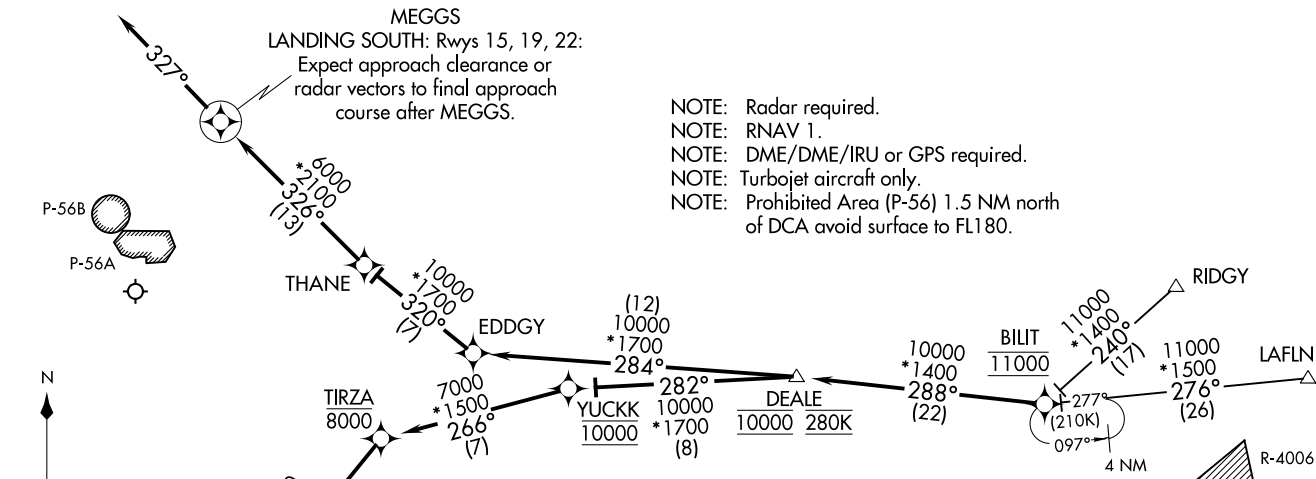
(BUILT.DEALE3) 23222
DEALE THREE ARRIVAL (RNAV)

POTOMAC APP CON
124.55 317.425
D-ATIS
132.65

AC-413 (FAA)

RONALD REAGAN WASHINGTON NTL (DCA)
WASHINGTON, DC

RONALD REAGAN WASHINGTON NTL (DCA)
WASHINGTON, DC



ARRIVAL ROUTE DESCRIPTION

LAFLN TRANSITION (LAFLN.DEALE3):
RIDGY TRANSITION (RIDGY.DEALE3):

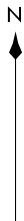
From BILIT on track 288° to cross DEALE at 10000 and at 280K.

LANDING NORTH RWYS 1, 4, 33: From DEALE on track 282° to cross YUCKK at 10000, then on track 266° to cross TIRZA at or below 8000, then on track 230° to cross HITEK at 7000, then on track 187° to MITEY, then on heading 187°. Expect radar vectors to final approach course.

LANDING SOUTH RWYS 15, 19, 22: From DEALE on track 284° to EDDGY, then on track 320° to THANE, then on track 326° to MEGGS, then on heading 327°. Expect radar vectors to final approach course.

BUCKO TRANSITION (BUCKO.FRDMM5):

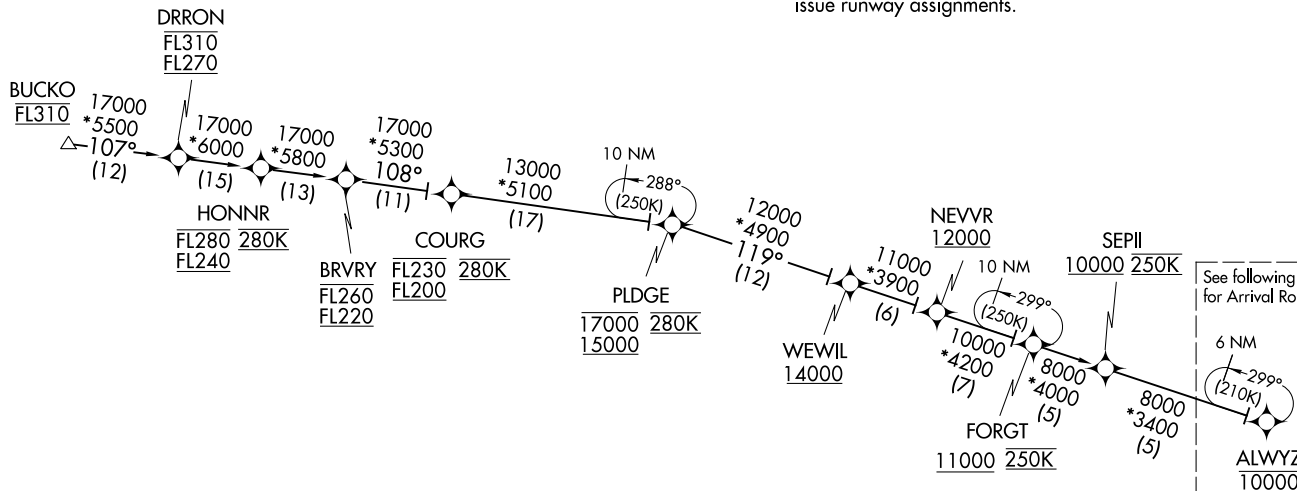
- NOTE: RADAR required.
- NOTE: RNAV 1.
- NOTE: DME/DME/IRU or GPS required.
- NOTE: Turbojets only, turboprops as assigned by ATC only.
- NOTE: PROHIBITED AREA (P56) 1.5 NM north of DCA
AVOID - surface to FL180.
- NOTE: Maintain last assigned altitude until cleared to "descend via" the FRDMM5. ARTCC will issue landing direction assignment (north or south) and Potomac TRACON will issue runway assignments.



POTOMAC APP CON
118.675 323.175
DCA D-ATIS
132.65
KADW D-ATIS
133.675 251.05
*KDAA ATIS
128.175



MORGANTOWN
MGW



See following page
for Arrival Routes.

NOTE: Chart not to scale.

ALWYZ.FRDMM5) 20JUN19

FRDMM FIVE ARRIVAL (RNAV) Transition Route

WASHINGTON, DC

ALWYZ.FRDMM5) 21168

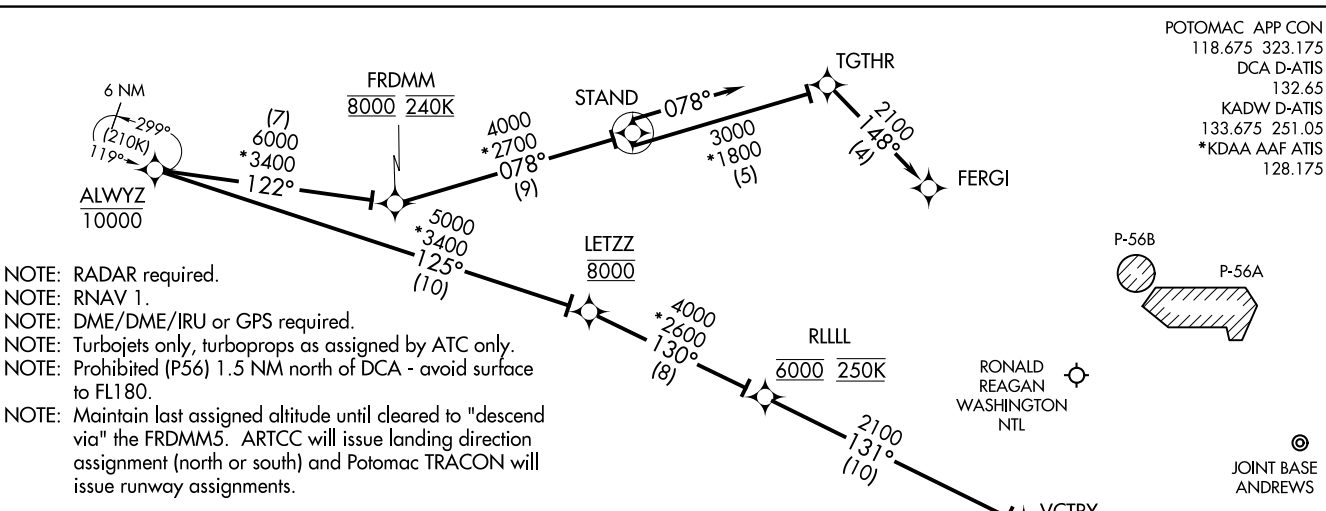
AL-443 (FAA)

WASHINGTON, DC

(CONTINUED ON FOLLOWING PAGE)

FRDMM FIVE ARRIVAL (RNAV) Arrival Routes
 (ALWYZ,FRDMM5) 20JUN19

WASHINGTON, DC



POTOMAC APP CON
 118.675 323.175
 DCA D-ATIS
 132.65
 KADW D-ATIS
 133.675 251.05
 *KDA AAF ATIS
 128.175

ARRIVAL ROUTE DESCRIPTION

LANDING DCA RWYS 1, 4, 33, and ADW RWYS 1L/R and LANDING DAA: From ALWYZ on track 125° to cross LETZZ at 8000, then on track 130° to cross RLLLL at 6000 and at 250K, then on track 131° to VCTRY, then on track 189° to HEROO, then on track 189°. Expect radar vectors to final approach course.

LANDING DCA RWYS 15, 19, 22: From ALWYZ on track 122° to cross FRDMM at 8000 and 240K, then on track 078° to STAND, then on track 078° to TGTHR, then on track 148° to FERGI, expect LDA/DME RWY 19, RNAV (RNP) RWY 19, RIVER VISUAL RWY 19 or radar vectors to final approach course.

LANDING ADW RWYS 19L/R: From ALWYZ on track 122° to cross FRDMM at 8000 and at 240K, then on track 078° to STAND, then on track 078°. Expect radar vectors to final approach course.



NOTE: Chart not to scale.

(ALWYZ,FRDMM5) 21168
 FRDMM FIVE ARRIVAL (RNAV) Arrival Routes
 AL-443 (FAA)

WASHINGTON, DC

(IRONS.IRONS7) 23334

AL-443 (FAA)

RONALD REAGAN WASHINGTON NTL (DCA)
WASHINGTON, DC

IRONS SEVEN ARRIVAL

POTOMAC APP CON
119.85 239.25
D-ATIS
132.65

CASANOVA
116.3 CSN
Chan 110

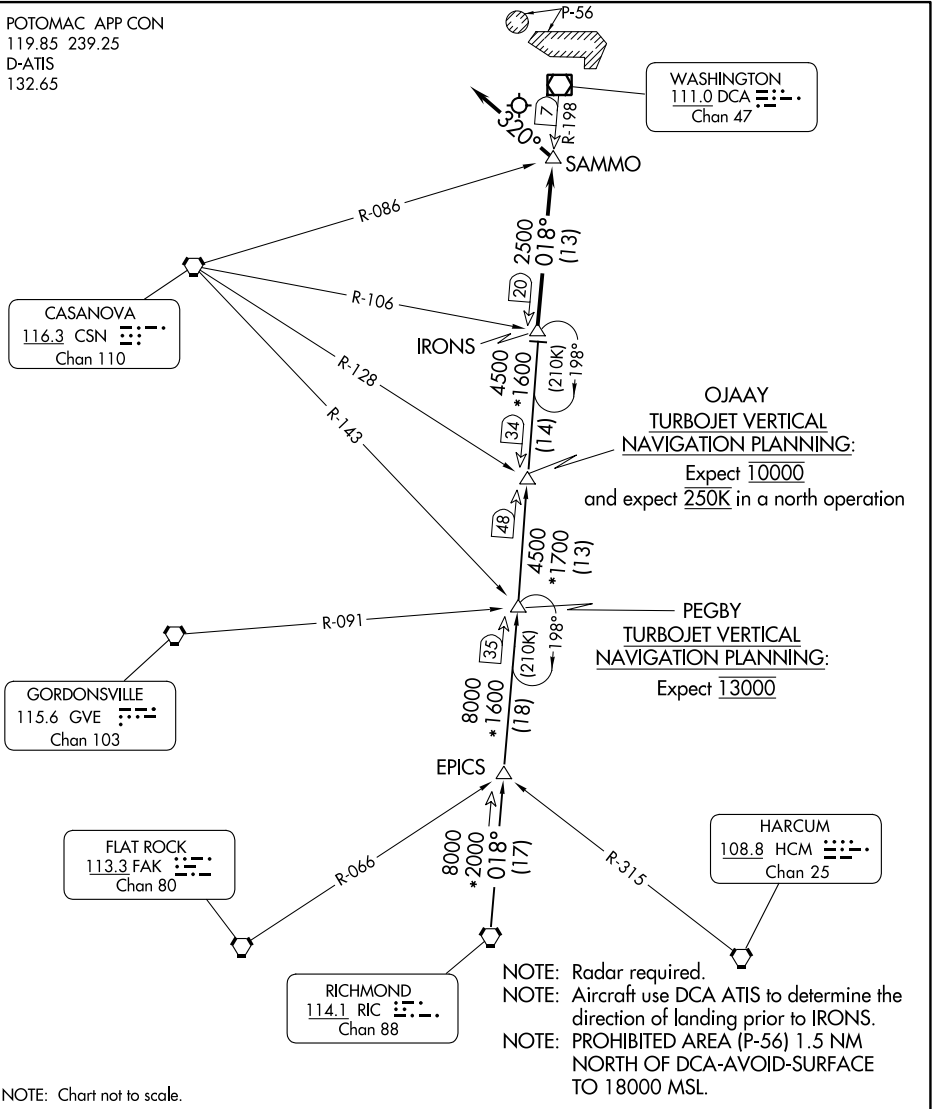
GORDONSVILLE
115.6 GVE
Chan 103

FLAT ROCK
113.3 FAK
Chan 80

RICHMOND
114.1 RIC
Chan 88

WASHINGTON
111.0 DCA
Chan 47

HARCUM
108.8 HCM
Chan 25



NE-3, 22 FEB 2024 to 21 MAR 2024

NE-3, 22 FEB 2024 to 21 MAR 2024

NOTE: Chart not to scale.

ARRIVAL ROUTE DESCRIPTION

RICHMOND TRANSITION (RIC.IRONS7): From over RIC VORTAC via RIC R-018 and DCA R-198 to IRONS. Thence....

....from IRONS:

- LANDING SOUTH: Then on DCA R-198 to SAMMO, then on 320° heading or assigned by ATC, expect radar vectors to final approach course.
- LANDING NORTH: Expect radar vectors to final approach course.

IRONS SEVEN ARRIVAL
(IRONS.IRONS7) 15SEP16

WASHINGTON, DC
RONALD REAGAN WASHINGTON NTL (DCA)

ARRIVAL ROUTE DESCRIPTION

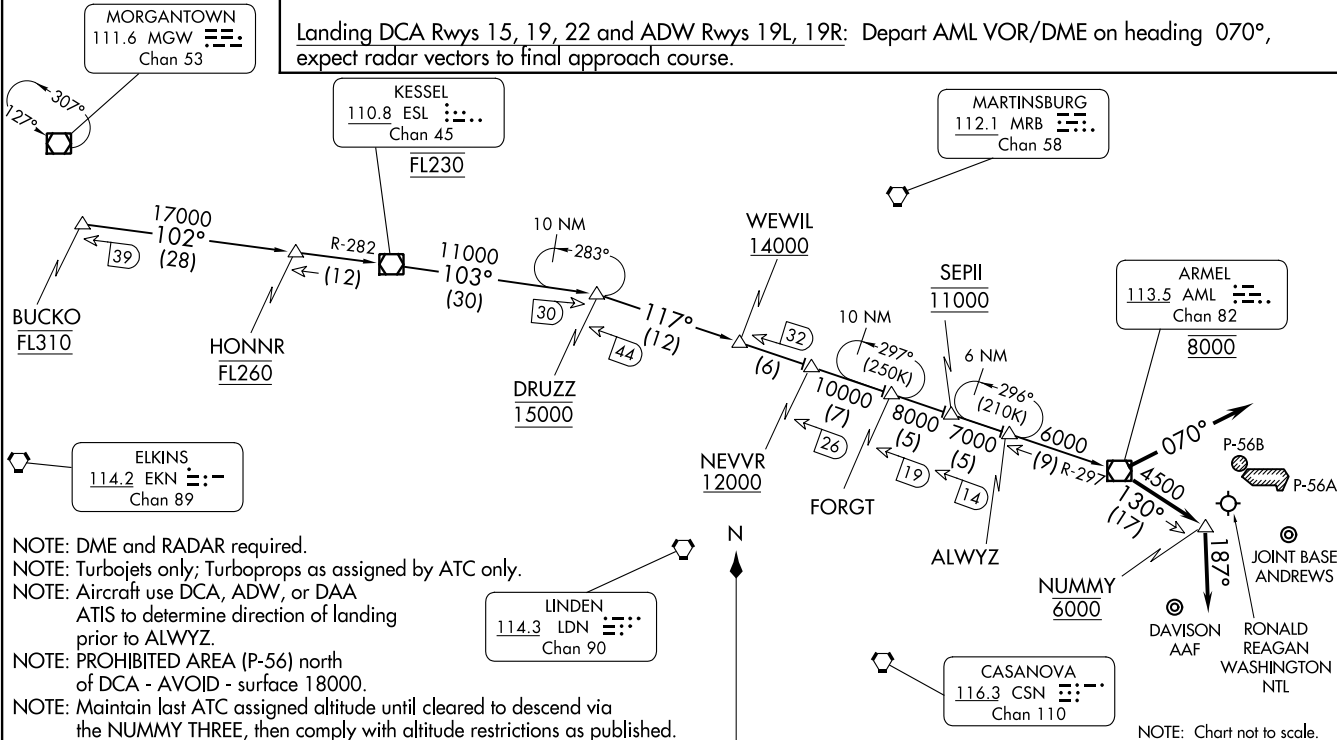
BUCKO TRANSITION (BUCKO.NUMMY3): From over BUCKO on ESL R-282 to ESL VOR/DME, then on ESL R-103 to DRUZZ, then on AML R-297 to AML VOR/DME.

Landing DCA Rwy 1, 4, 33, ADW Rwy 1L, 1R, and DAA: From over AML VOR/DME on AML VOR/DME R-130 to cross NUMMY at 6000, then on heading 187°, expect radar vectors to final approach course.

Landing DCA Rwy 15, 19, 22 and ADW Rwy 19L, 19R: Depart AML VOR/DME on heading 070°, expect radar vectors to final approach course.

NUMMY THREE ARRIVAL
 (AML.NUMMY3) 20JUN19

NUMMY THREE ARRIVAL
 23334



- NOTE: DME and RADAR required.
- NOTE: Turbojets only; Turboprops as assigned by ATC only.
- NOTE: Aircraft use DCA, ADW, or DAA ATIS to determine direction of landing prior to ALWYZ.
- NOTE: PROHIBITED AREA (P-56) north of DCA - AVOID - surface 18000.
- NOTE: Maintain last ATC assigned altitude until cleared to descend via the NUMMY THREE, then comply with altitude restrictions as published.

AL-443 (FAA)

WASHINGTON, DC

WASHINGTON, DC

(SHILO.SKILLS5) 23222

SKILLS FIVE ARRIVAL (RNAV)

RONALD REAGAN WASHINGTON NTL (DCA)
AL-443 (FAA) WASHINGTON, DC

POTOMAC APP CON
128.7 307.9
D-ATIS
132.65

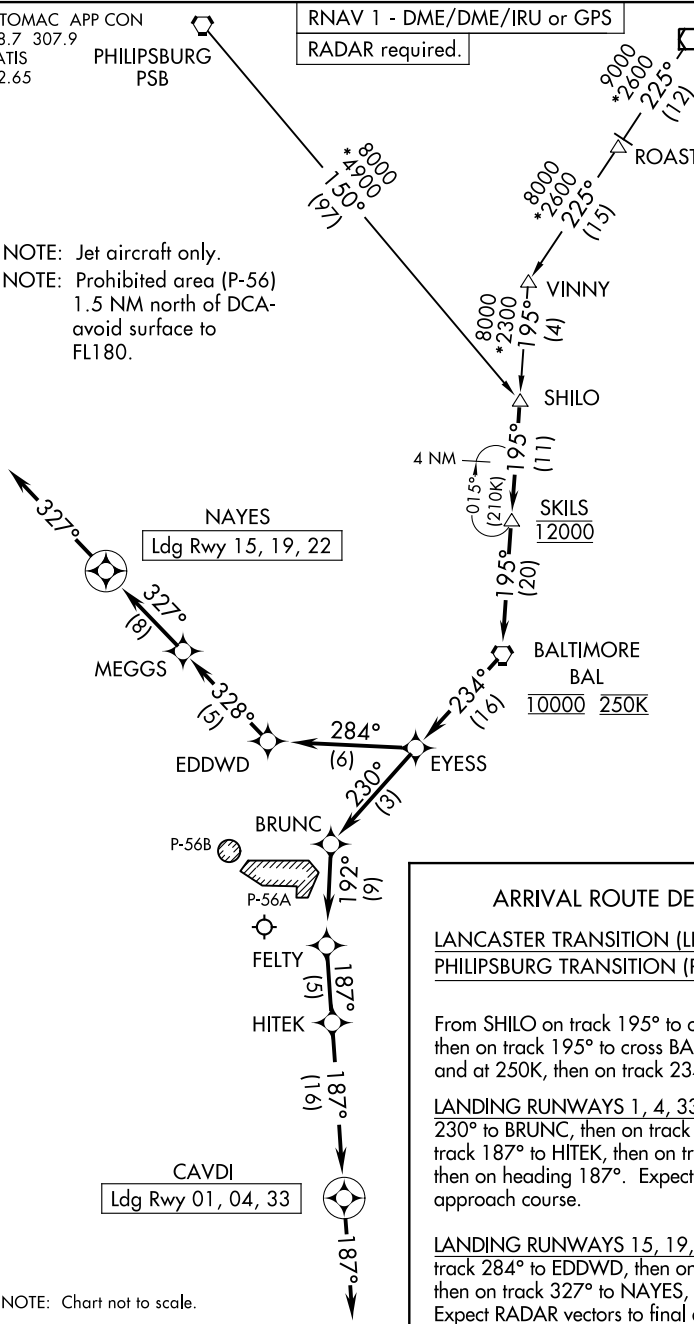
PHILIPSBURG
PSB

RNAV 1 - DME/DME/IRU or GPS

RADAR required.

LANCASTER
LRP

NOTE: Jet aircraft only.
NOTE: Prohibited area (P-56)
1.5 NM north of DCA-
avoid surface to
FL180.



ARRIVAL ROUTE DESCRIPTION

LANCASTER TRANSITION (LRP.SKILLS5):
PHILIPSBURG TRANSITION (PSB.SKILLS5):

From SHILO on track 195° to cross SKILLS, at 12000, then on track 195° to cross BAL VORTAC, at 10000 and at 250K, then on track 234° to EYESS.

LANDING RUNWAYS 1, 4, 33: From EYESS on track 230° to BRUNC, then on track 192° to FELTY, then on track 187° to HITEK, then on track 187° to CAVDI, then on heading 187°. Expect RADAR vectors to final approach course.

LANDING RUNWAYS 15, 19, 22: From EYESS on track 284° to EDDWD, then on track 328° to MEGGS, then on track 327° to NAYES, then on heading 327°. Expect RADAR vectors to final approach course.

NOTE: Chart not to scale.

NE-3, 22 FEB 2024 to 21 MAR 2024

NE-3, 22 FEB 2024 to 21 MAR 2024

SKILLS FIVE ARRIVAL (RNAV)
(SHILO.SKILLS5) 10AUG23

WASHINGTON, DC
RONALD REAGAN WASHINGTON NTL (DCA)

TIKEE FOUR ARRIVAL (RNAV)
(TIKEE.TIKEE4) 20APR23

POTOMAC APP CON
120.45 306.925
DCA D-ATIS
132.65
ADW D-ATIS
133.675 251.05
*DAA ATIS
128.175

RNAV 1 - DME/DME/IRU or GPS.
RADAR required.

ARRIVAL ROUTE DESCRIPTION

BBONE TRANSITION (BBONE.TIKEE4):
KESSEL TRANSITION (ESL.TIKEE4):
SEALZ TRANSITION (SEALZ.TIKEE4):

All aircraft types landing HEF/NYG/RMN/HWY/CJR/EZF:
From TIKEE on track 090° to JETIS, then on heading 090° or as assigned by ATC. Expect RADAR vectors to final approach course.

Props and Turboprop aircraft landing DAA/W00/VKX/ADW/
2W5/DCA: From TIKEE on track 122° to GILFF, then on heading 090° or as assigned by ATC. Expect RADAR vectors to final approach course.

NOTE: Procedure available to all type aircraft landing the following airports: CJR, HWY, HEF, RMN, EZF, NYG.

NOTE: Props or Turboprop aircraft only landing the following airports: DAA, 2W5, VKX, W00, DCA, ADW.

KESSEL
ESL
FL190



7000
*6300
178°
(37)

BBONE

7000
*6300
107°
(12)

LURAY 7000
*6300
(7)

6300
087°
(9)

(3)
5200
090°

JETIS

090°

7000
*6300
086°
(42)

SEALZ

LLBEE
9000

5200
122°
(41)

GILFF

090°
(3)

HIGPO

MANASSAS RGNL/
HARRY P DAVIS FLD

WARRENTON/
FAUQUIER

CULPEPER
RGNL

STAFFORD
RGNL

3000
*1500

GILFF

(3)

HIGPO

SHANNON

RONALD REAGAN
WASHINGTON
NTL

FREEWAY

JOINT BASE
ANDREWS

POTOMAC
AIRFIELD

MARYLAND

QUANTICO MCAF
(TURNER FLD)

N



NOTE: Chart not to scale

WASHINGTON, DC

WASHINGTON, DC

TIKEE FOUR ARRIVAL (RNAV)
(TIKEE.TIKEE4) 23110

AL-443 (FAA)

TRUPS FOUR ARRIVAL (TRUPS, TRUPS4) 29MAR18

TRUPS FOUR ARRIVAL (RNAV) Transition Routes

WASHINGTON, DC

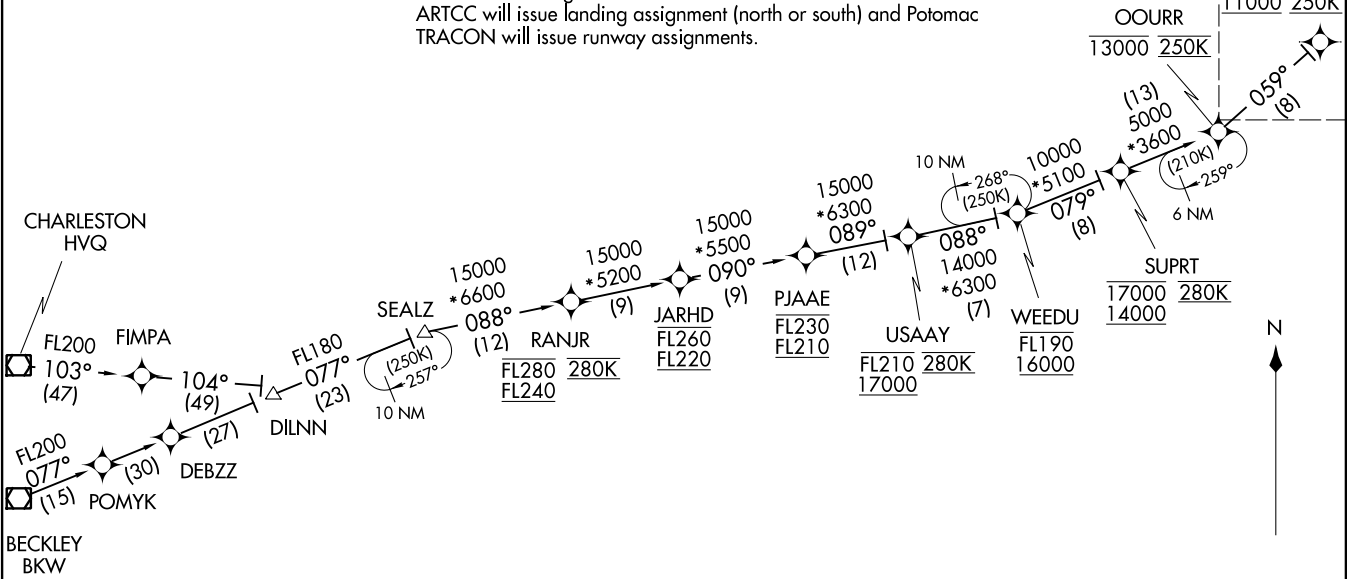
POTOMAC APP CON
118.675 323.175
DCA D-ATIS
132.65
KADW D-ATIS
133.675 251.05
*KDAW ATIS
128.175

- NOTE: RADAR required.
 - NOTE: RNAV 1.
 - NOTE: DME/DME/IRU or GPS required.
 - NOTE: Turbojets only; turboprops as assigned by ATC only.
 - NOTE: Prohibited area (P-56) north of DCA-avoid-surface to FL180.
 - NOTE: Maintain last assigned altitude until cleared to "descend via" the TRUPS4.
- ARTCC will issue landing assignment (north or south) and Potomac TRACON will issue runway assignments.

See following page for arrival routes.

TRUPS

11000 250K



BECKLEY TRANSITION (BKW.TRUPS4):
CHARLESTON TRANSITION (HVQ.TRUPS4):

(CONTINUED ON FOLLOWING PAGE)

NOTE: Chart not to scale.

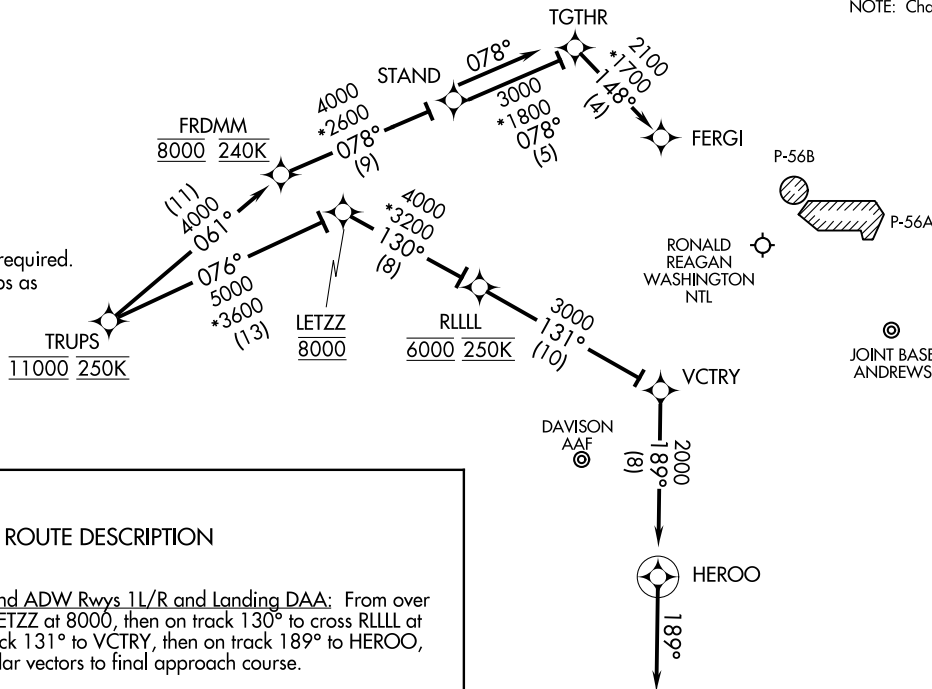
TRUPS, TRUPS4) 21168

TRUPS FOUR ARRIVAL (RNAV) Transition Routes

WASHINGTON, DC

AL-443 (FAA)

NOTE: Chart not to scale.



ARRIVAL ROUTE DESCRIPTION

Landing DCA Rwys 1, 4, 33, and ADW Rwys 11/R and Landing DAA: From over TRUPS on track 076° to cross LETZZ at 8000, then on track 130° to cross RLLLL at 6000 and at 250K, then on track 131° to VCTRY, then on track 189° to HEROO, then on track 189°. Expect radar vectors to final approach course.

Landing DCA Rwys 15, 19, 22: From over TRUPS on track 061° to cross FRDMM at 8000 and 240K, then on track 078° to STAND, then on track 078° to TGTHR, then on track 148° to FERG1. Expect LDA/DME Rwy 19, RNAV/RNP Rwy 19, RIVER VISUAL Rwy 19 or radar vectors to final approach course.

Landing ADW Rwys 19L/R: From over TRUPS on track 061° to cross FRDMM at 8000 and at 240K, then on track 078° to STAND, then on track 078°.

Expect radar vectors to final approach course.

- NOTE: Prohibited area (P-56) north of DCA-avoid surface to FL180.
- NOTE: Maintain last assigned altitude until cleared to "descend via" the TRUPS4. ARTCC will issue landing assignment (north or south) and Potomac TRACON will issue runway assignments.



TRUPS FOUR ARRIVAL (RNAV) Arrival Routes (TRUPS, TRUPS4) 29MARI8

WASHINGTON, DC

TRUPS FOUR ARRIVAL (RNAV) Arrival Routes (TRUPS, TRUPS4) 21224

WASHINGTON, DC

AL-443 (FAA)